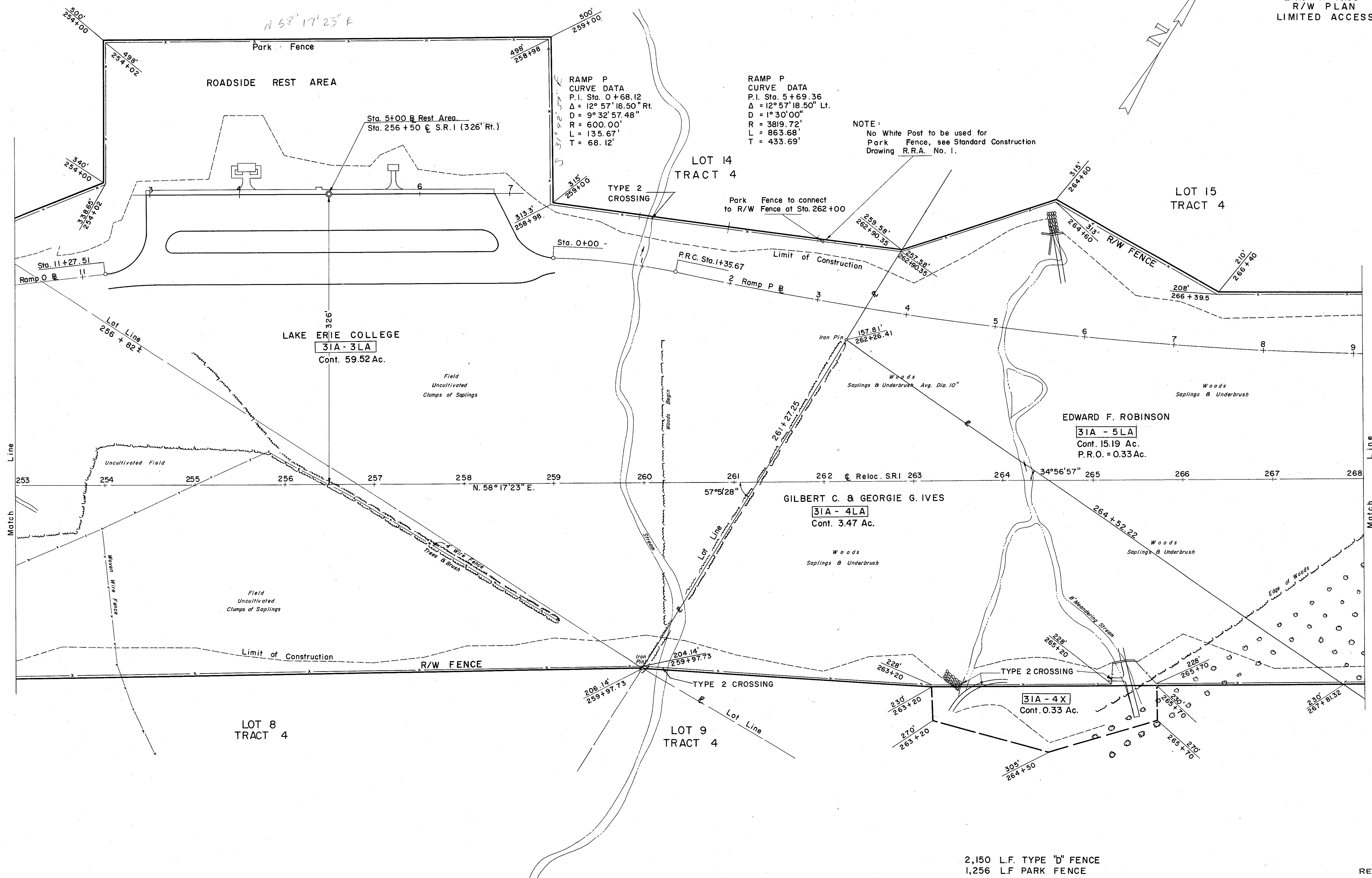


FED. RD. DIVISION	STATE	PROJECT
2	OHIO	LAK-1-1038

302
306

LAK-1-1038
R/W PLAN
LIMITED ACCESS

7
11



RAMP P
CURVE DATA
P.I. Sta. 0+68.12
 $\Delta = 12^\circ 57' 18.50''$ Rt.
 $D = 9^\circ 32' 57.48''$
 $R = 600.00'$
 $L = 135.67'$
 $T = 68.12'$

RAMP P
CURVE DATA
P.I. Sta. 5+69.36
 $\Delta = 12^\circ 57' 18.50''$ Lt.
 $D = 1^\circ 30' 00''$
 $R = 3819.72'$
 $L = 863.68'$
 $T = 433.69'$

NOTE:
No White Post to be used for
Park Fence, see Standard Construction
Drawing R.R.A. No. 1.

2,150 L.F. TYPE "b" FENCE
1,256 L.F. PARK FENCE