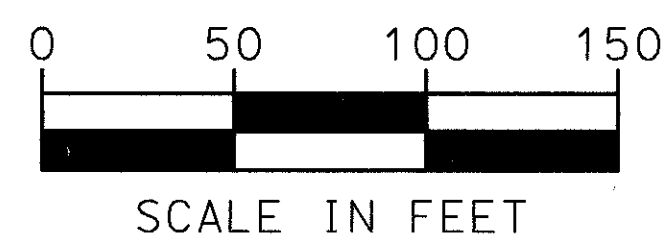


TRAFFIC MAINTENANCE



TEMPORARY PAVEMENT MARKINGS LEGEND

- (A) - TEMPORARY EDGE LINE, CLASS I, 740.05, TYPE B (WHITE) *
- (B) - TEMPORARY EDGE LINE, CLASS I, 740.05, TYPE B (YELLOW) *
- (C) - TEMPORARY CHANNELIZING LINE, CLASS I, 740.05, TYPE B *
- (E) - TEMPORARY EDGE LINE, CLASS I (WHITE)
- (F) - TEMPORARY EDGE LINE, CLASS I (YELLOW)
- (G) - TEMPORARY LANE LINE, CLASS I, 642 (WHITE)
- (J) - TEMPORARY LANE LINE, CLASS I, 740.05, TYPE B (WHITE)
- (K) - PORTABLE CONCRETE BARRIER
- (L) - PORTABLE CONCRETE BARRIER, BRIDGE MOUNTED
- (M) - PORTABLE CONCRETE BARRIER, TYPE BRD

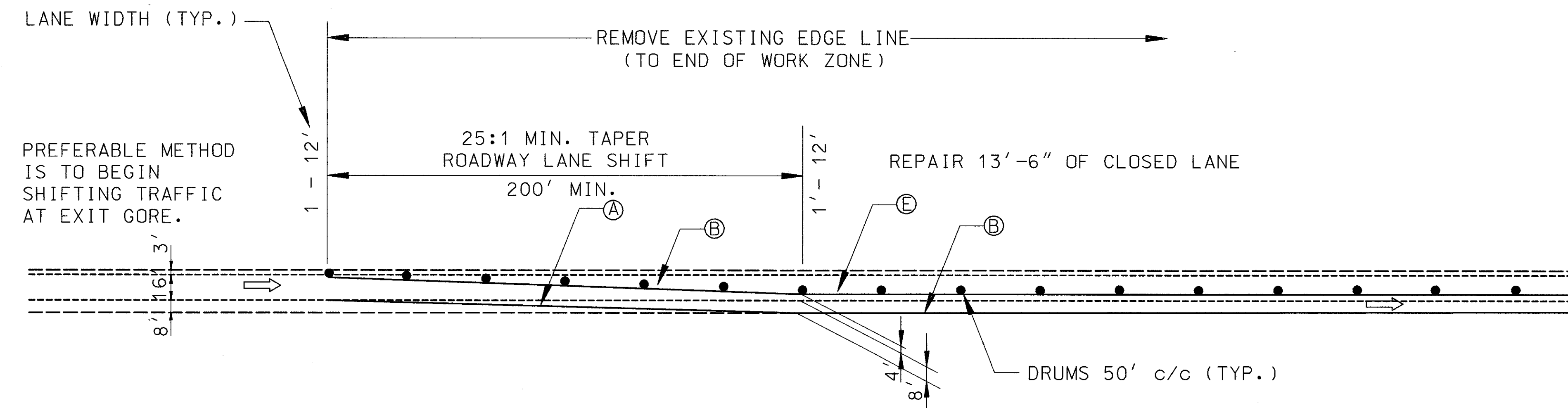
* - ALL TEMPORARY PAVEMENT MARKINGS WHICH ARE TO BE INSTALLED BEYOND THE PROPOSED RESURFACING LIMITS SHALL BE 740.05, TYPE C.

NOTE:

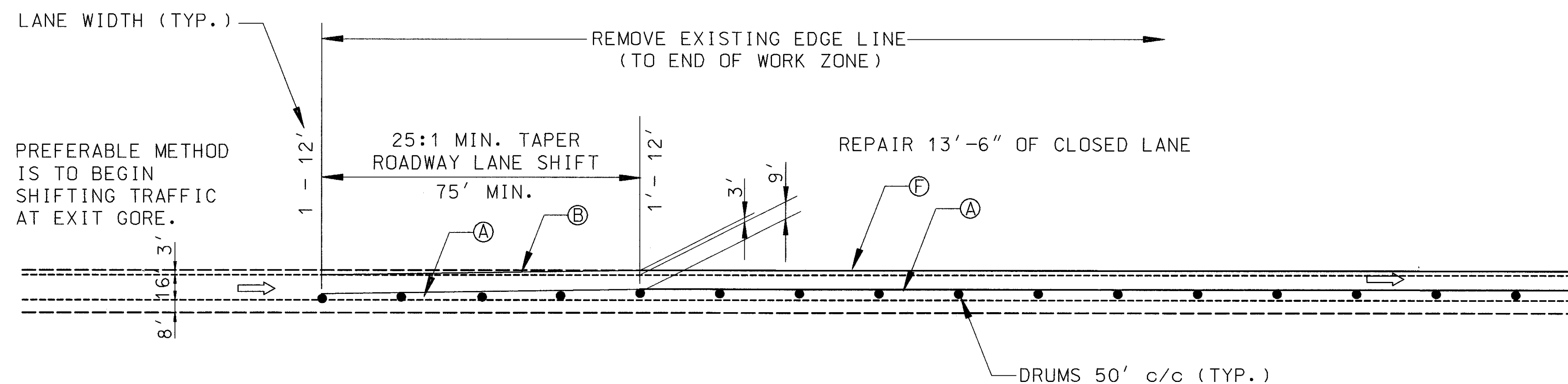
ALL PROPOSED REPAIRS TO RAMPS L, M, N, AND P ARE TO BE DONE WITH FLEXIBLE REPAIRS USING TEMPORARY DAYTIME LANE CLOSURES. WHEN TEMPORARY LANE CLOSURES ARE USED, NO TEMPORARY PAVEMENT MARKINGS OR REMOVALS SHALL BE REQUIRED AND ONLY DRUMS SPACED AS SHOWN SHALL BE REQUIRED.

IF THE ENGINEER DETERMINES THAT RIGID CONCRETE REPLACEMENT IS NECESSARY, THESE DETAILED TRAFFIC MAINTENANCE SCHEMES, INCLUDING TEMPORARY PAVEMENT MARKINGS, SHALL BE IMPLEMENTED.

FOR RAMP ENTRANCE AND EXIT DETAILED TRAFFIC MAINTENANCE SCHEMES REFER TO STD. DWG'S MT-98.13, MT-98.14, MT-98.15.



1 LANE RAMP, LANE SHIFT RIGHT
(REVERSE AT END OF CLOSURE)



1 LANE RAMP, LANE SHIFT LEFT
(REVERSE AT END OF CLOSURE)

REFERENCES:

ITEM	SHT. NO
TRAFFIC MAINTENANCE NOTES	155-156
TRAFFIC MAINTENANCE QUANTITIES	157
TEMPORARY PAVEMENT MARKINGS	159