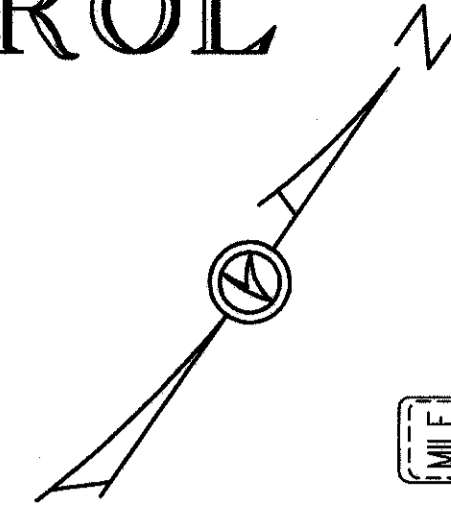


TRAFFIC CONTROL

LAKE COUNTY
LAK-90-6.71

OHIO
FHWA
REGION 5

135
182



BEGIN PROJECT
STA. 308+41.00
S.L.M. = 6.71
IM-90-1(178)
NH-90-1(178)

17' x 9.5'
EXPRESS 2 3/4
LOCAL 4
Cleveland 21
NO WORK

STA. 308+86

MILE 1 9 3
N-41-12
STA. 316+82

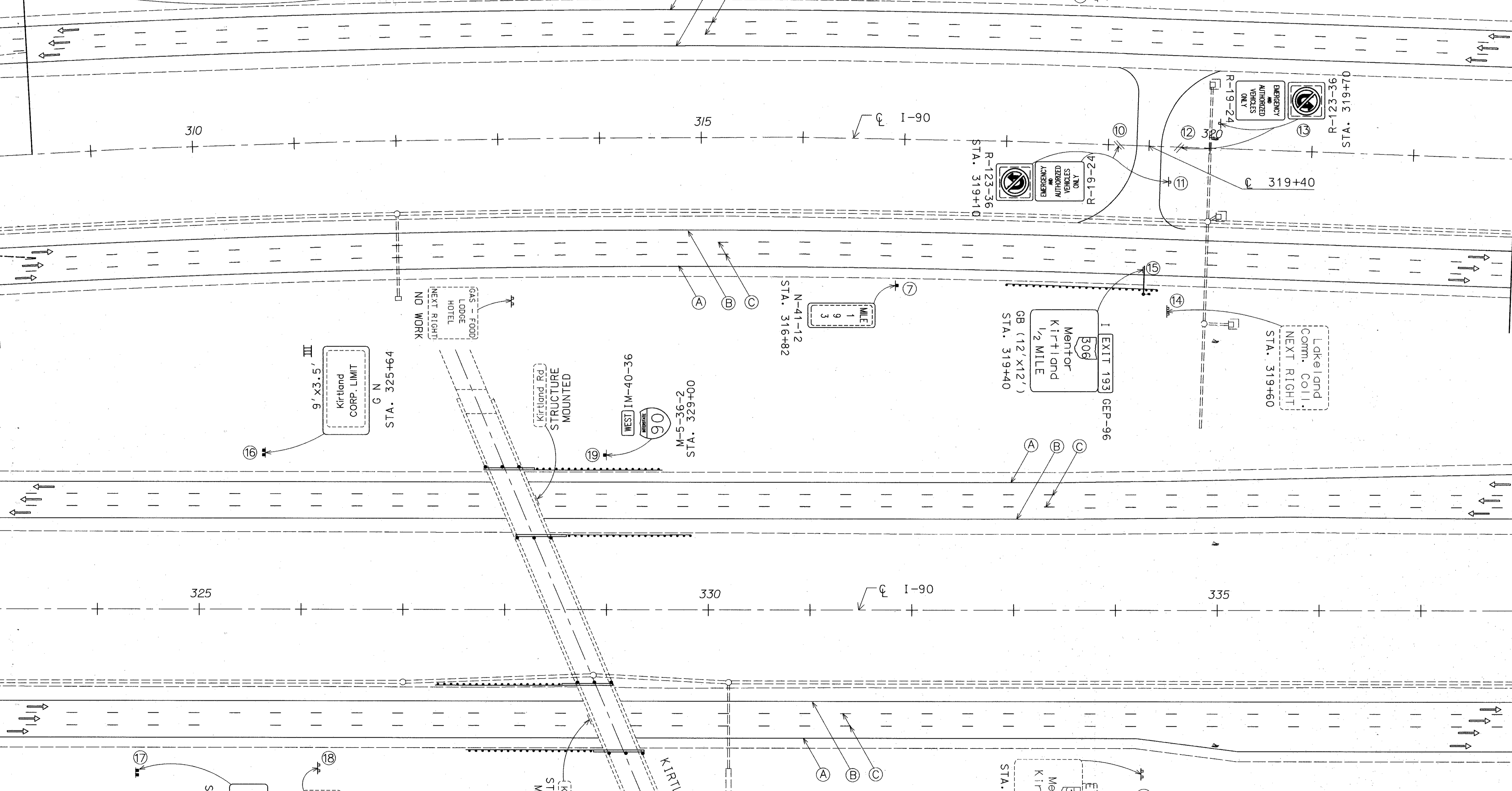
SPEED LIMIT 55
R-10-48
STA. 318+86

MATCH LINE STA. 308+00

MATCH LINE STA. 323+00

MATCH LINE STA. 323+00

MATCH LINE STA. 338+00



30

315

I-90

319+40

GAS - FOOD
LODGE
HOTEL
NEXT RIGHT
NO WORK

9' x 3.5'
Kirtland
CORP. LIMIT
G N
STA. 325+64

Kirtland Rd.
STRUCTURE
MOUNTED

WEST I M-40-36
M-5-36-2
STA. 329+00

MILE 1 9 3
N-41-12
STA. 316+82

EXIT 193
306
Mentor
Kirtland
1/2 MILE
GB (12' x 12')
STA. 319+40

Lakeland
Comm. Coll.
NEXT RIGHT
STA. 319+60

325

330

I-90

335

Kirtland Rd.
STRUCTURE
MOUNTED

KIRTLAND RD.

10' x 3.5'
Willoughby
CORP. LIMIT
G N
STA. 324+37

Willoughby
CORP. LIMIT
III

EXIT 193
306
Mentor
Kirtland
STA. 334+25

FOR LEGEND SEE
SHEET NO. 134

REFERENCES:

ITEM	SHT. NO
PLAN SHEET	21
CROSS SECTIONS	34-38
SIGN DETAILS	151

D:\DGN\LAK-90\TRAFFCON\5774.PB.DGN