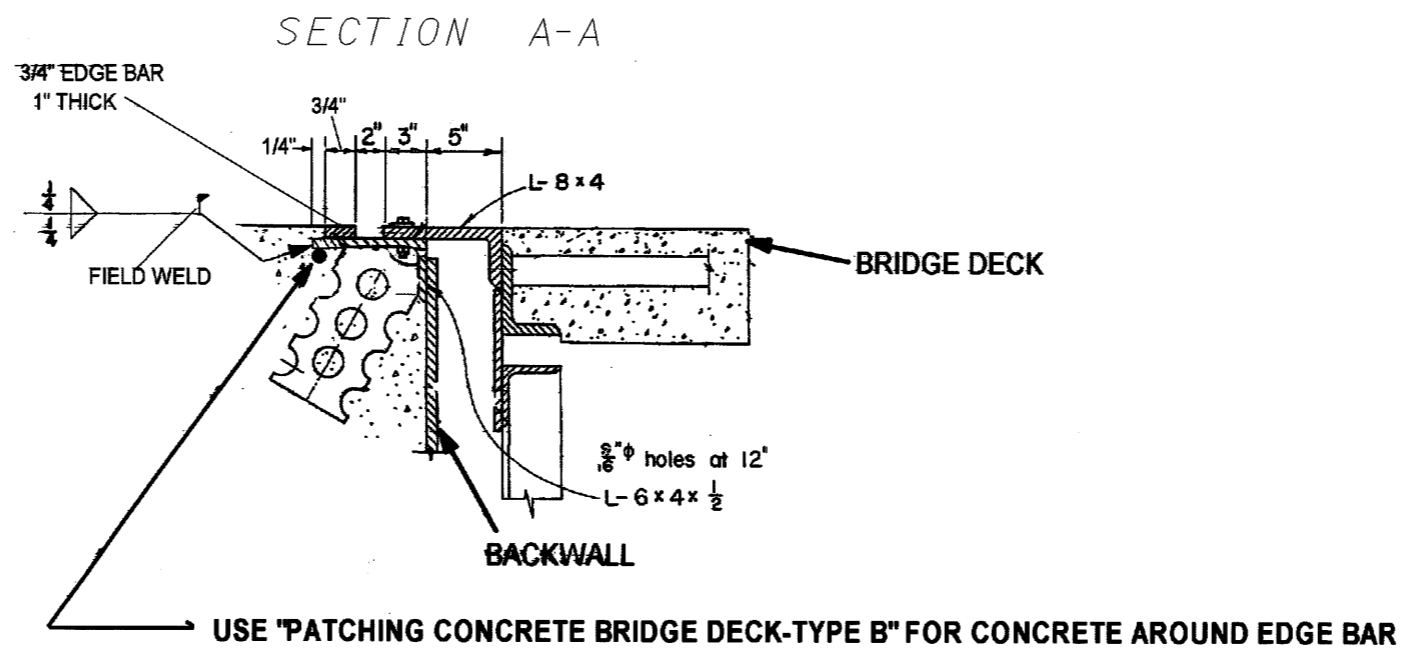


I:\PROJECTS\PI\22743\22743SE3.dgn 02-JAN-2002 4:35PM jthreat



NOTES:

- 1) SEE EDGE BAR LOCATION PAGE 12.
- 2) SEE PAGE 12 FOR LOCATION OF SECTION A-A.
- 3) EDGE BAR THICKNESS IS 1".

CALCULATED  
CHECKED

EDGE BAR DETAILS

LAK-90-05.99 / VAR

13  
15