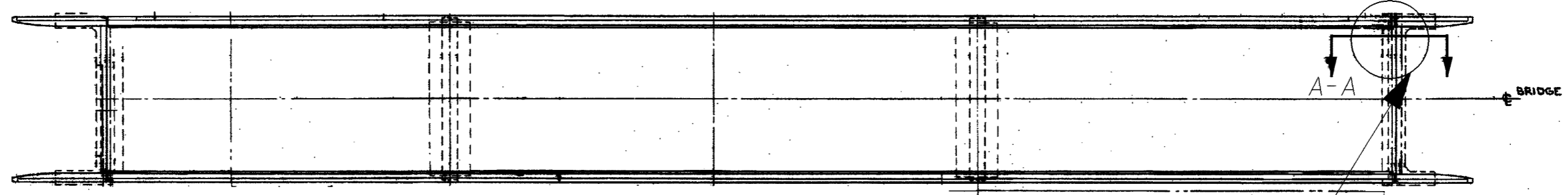


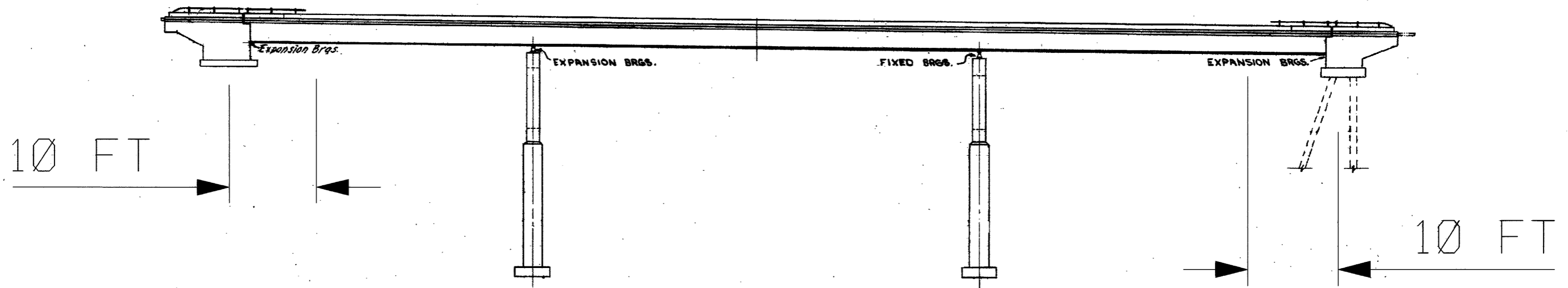
BRIDGE NO. LAK-90-1641 L&R



SEE PAGE 13 FOR EDGE BAR DETAIL

FEATURES	LAK-90-1641L	LAK-90-1641R
OVERALL LENGTH (FT)	345	345
NUMBER OF SPANS	3	3
LONGEST SPAN	140	140
NUMBER OF EXP JTS	2	2
ROADWAY WIDTH	42	42
NUMBER OF LANES UNDER BRIDGE	N/A	N/A
MINIMUM VERTICAL CLEARANCE	N/A	N/A
NUMBER OF GIRDERS	6	6
GIRDER SIZE	68" x 3/8"	68" x 3/8"
UTILITIES	NONE	NONE

BRIDGE NO. LAK-90-1641 L&R



NOTES:

- 1) EDGE BAR IS LOCATED ON APPROACH SLAB. SEE DETAIL PAGE 13 .
- 2) SEE PAGE 13 FOR DETAILED VIEW OF SECTION A-A..
- 3) PAINT STRUCTURES AS SHOWN. THAT IS, PAINT FROM ABUTMENT TO 5 FT INWARD.
- 4) PAINT 4 LOCATIONS.
- 5) SEE GENERAL NOTES PAGE 4. FOR WORK DETAIL.

BRIDGE DATA

LAK-90-05.99 / VAR