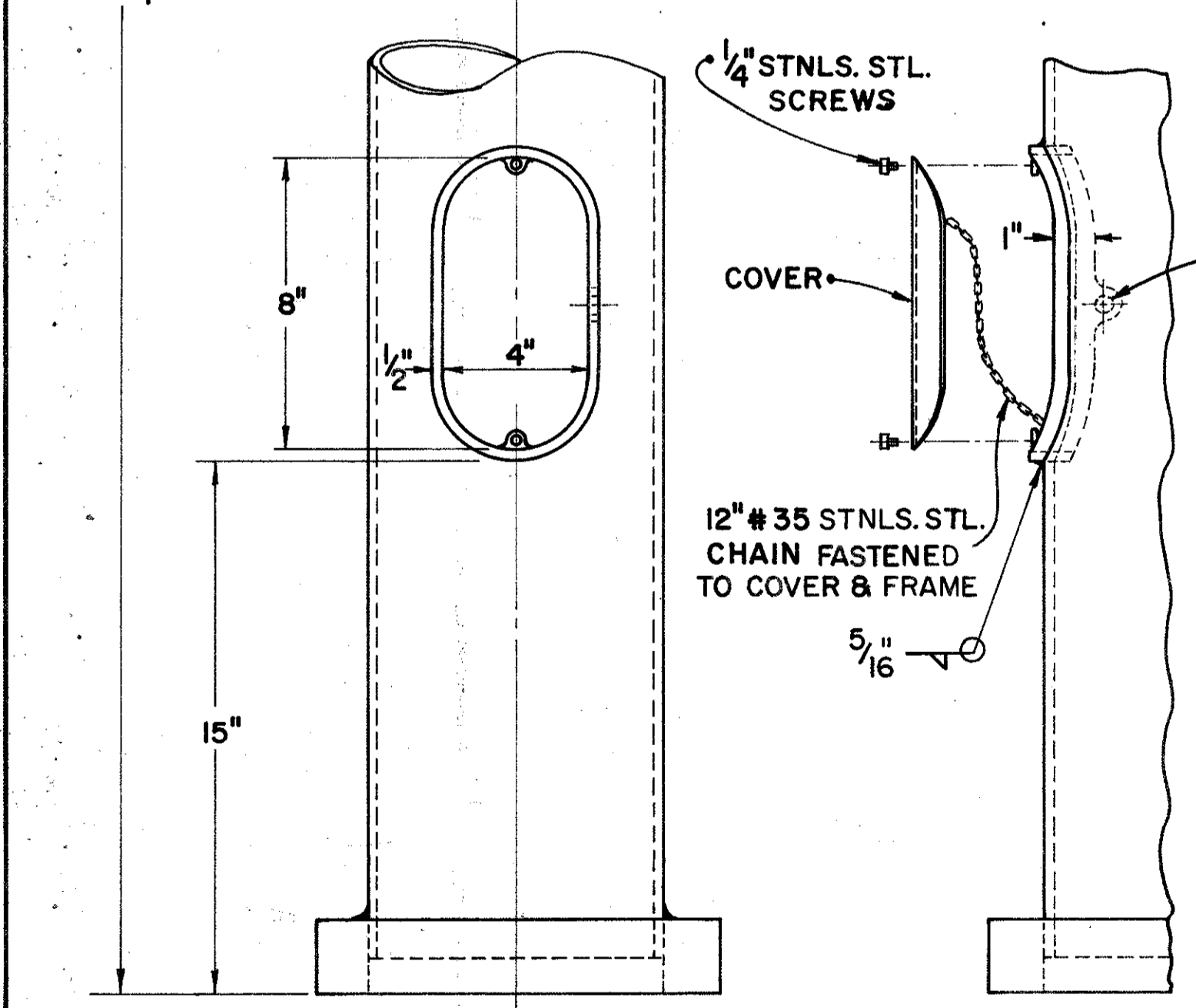
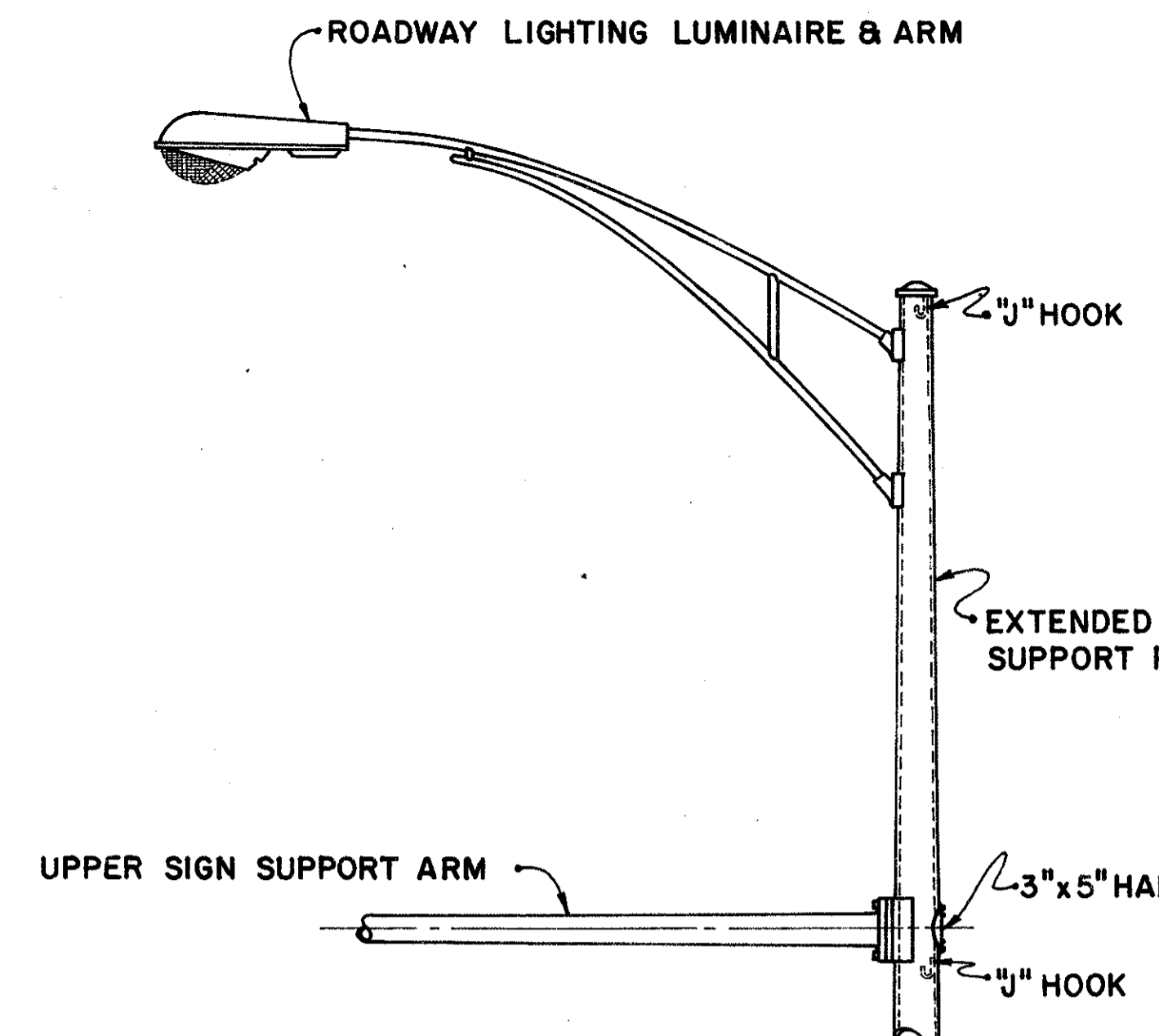


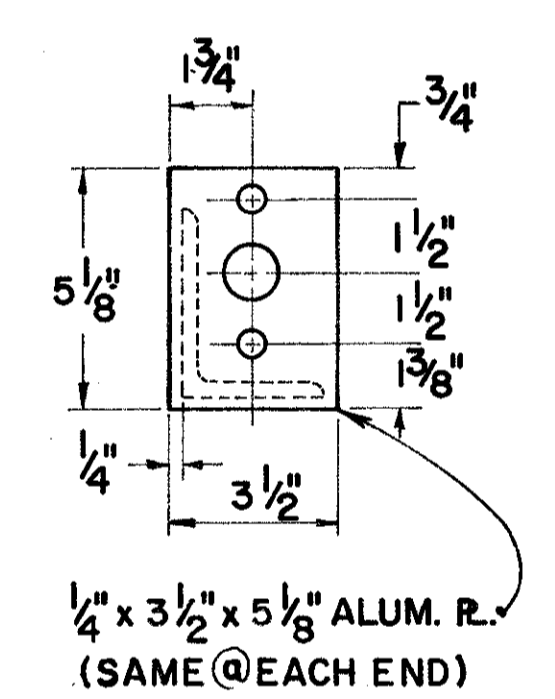
SWITCH ENCLOSURE BRACKET



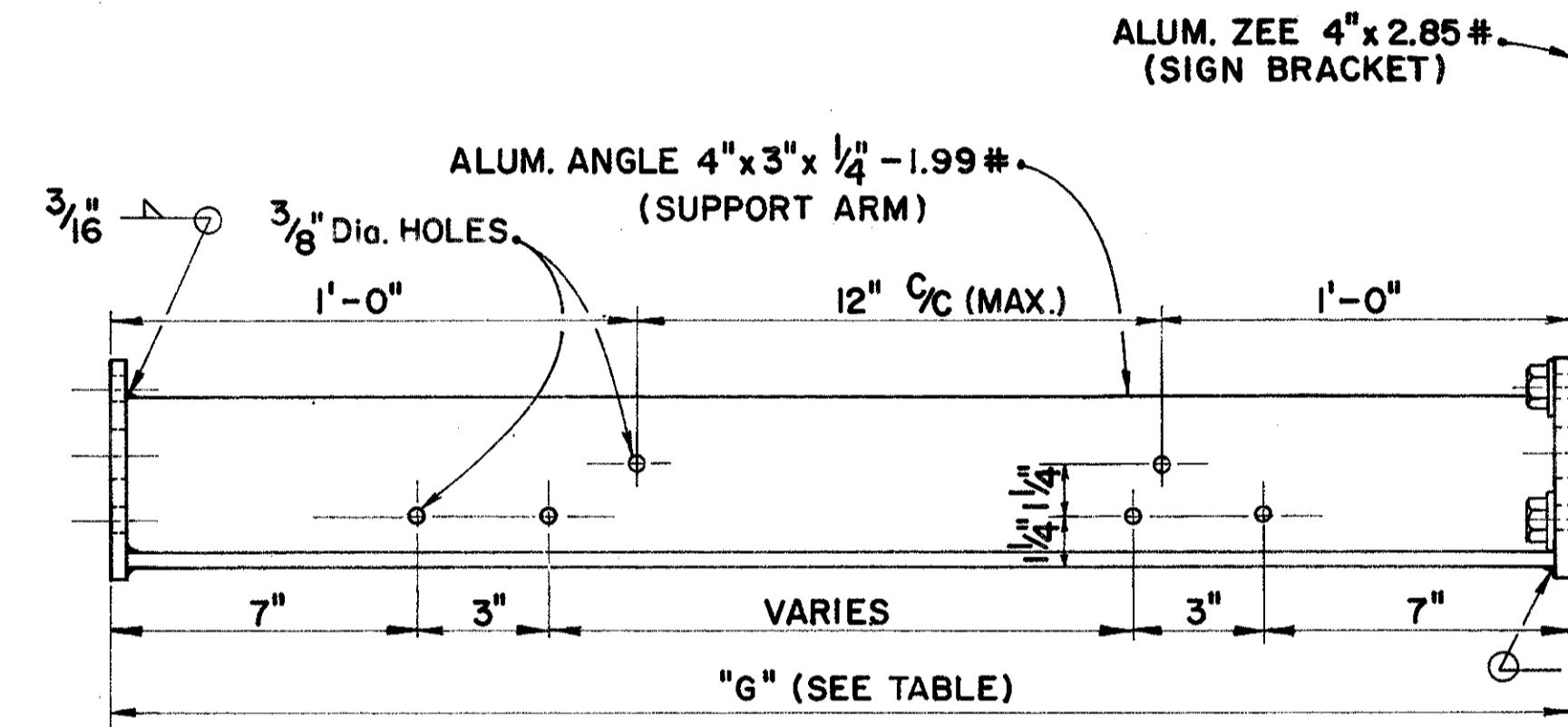
4" x 8" CURVED HANDHOLE



POLE EXTENSION FOR LIGHTING LUMINAIRE



SIGN ATTACHMENT FOR BOX TRUSS



SUPPORT ARM & SIGN BRACKET
(MAKE AS LEFTS & RIGHTS FOR EACH SIGN)

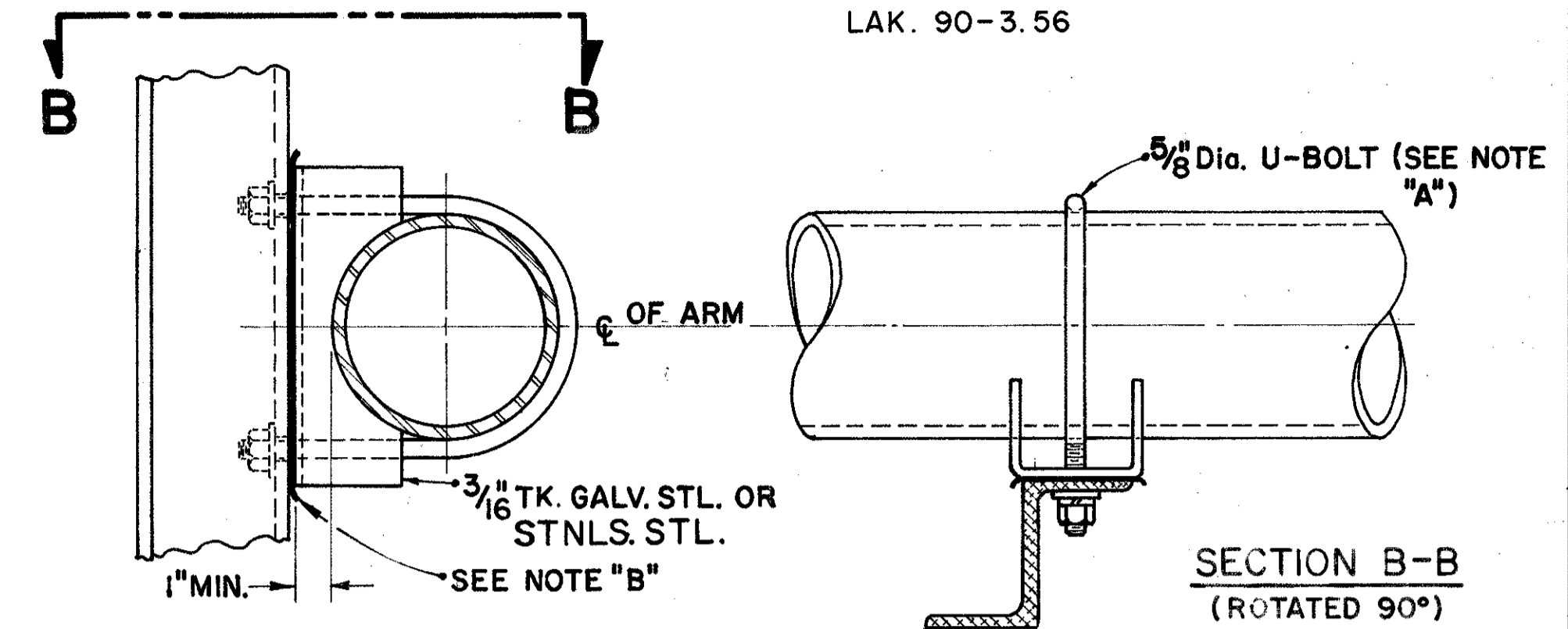
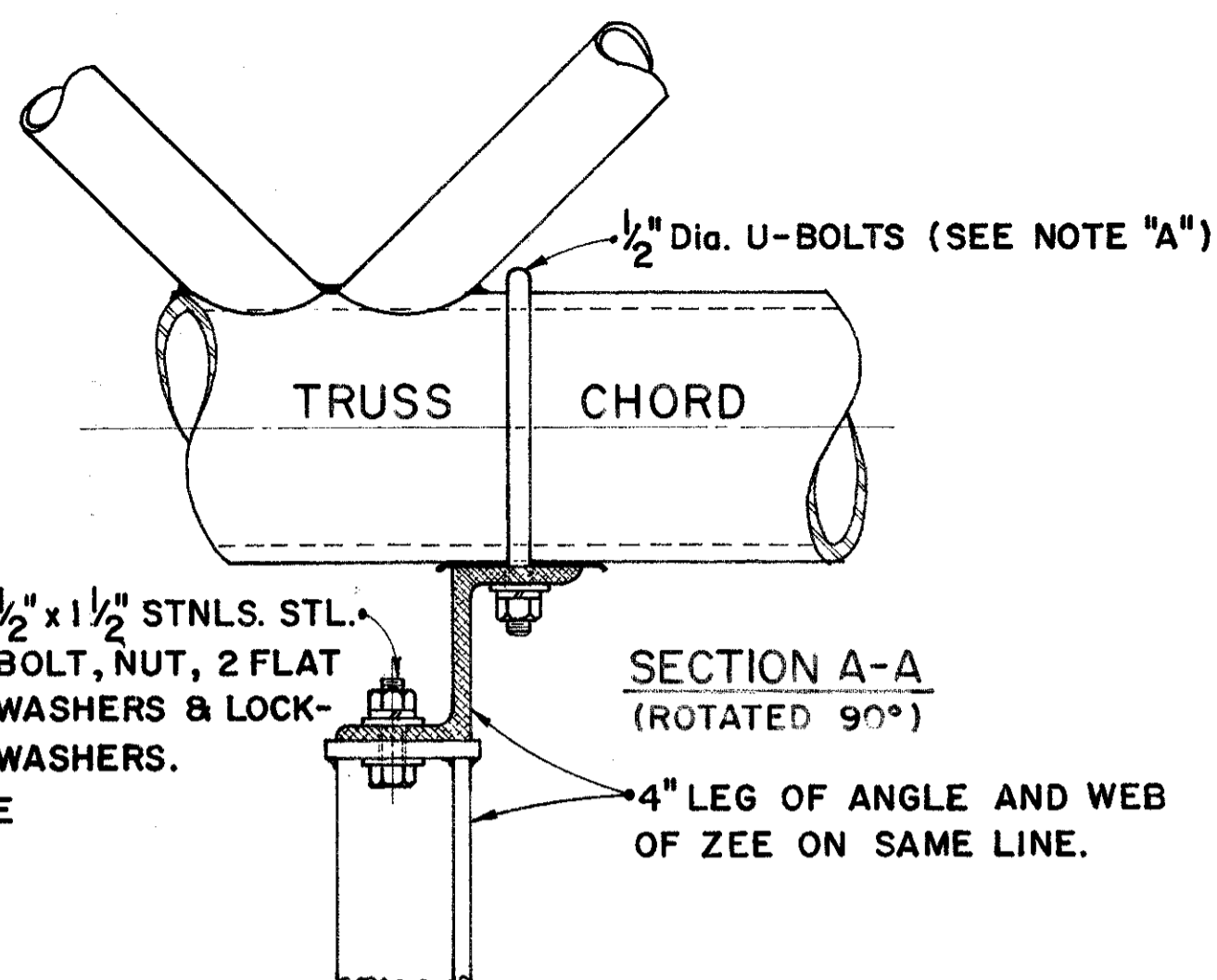
SIGN HEIGHT	SUPPORT ARM LENGTH "6"	BRACING ROD REQUIRED
4'-0" to 6'-0"	2'-9"	NO
6'-6" to 7'-6"	3'-3"	NO
8'-0" to 11'-0"	4'-3"	YES
11'-6" to 14'-0"	5'-9"	YES

NOTE:
FOR LENGTH AND QUANTITY OF SIGN BRACKETS SEE PROJECT PLAN.
UNLESS OTHERWISE NOTED, MIDPOINT OF SIGN BRACKETS AND TRUSS CENTERLINE SHALL BE AT THE SAME ELEVATION.

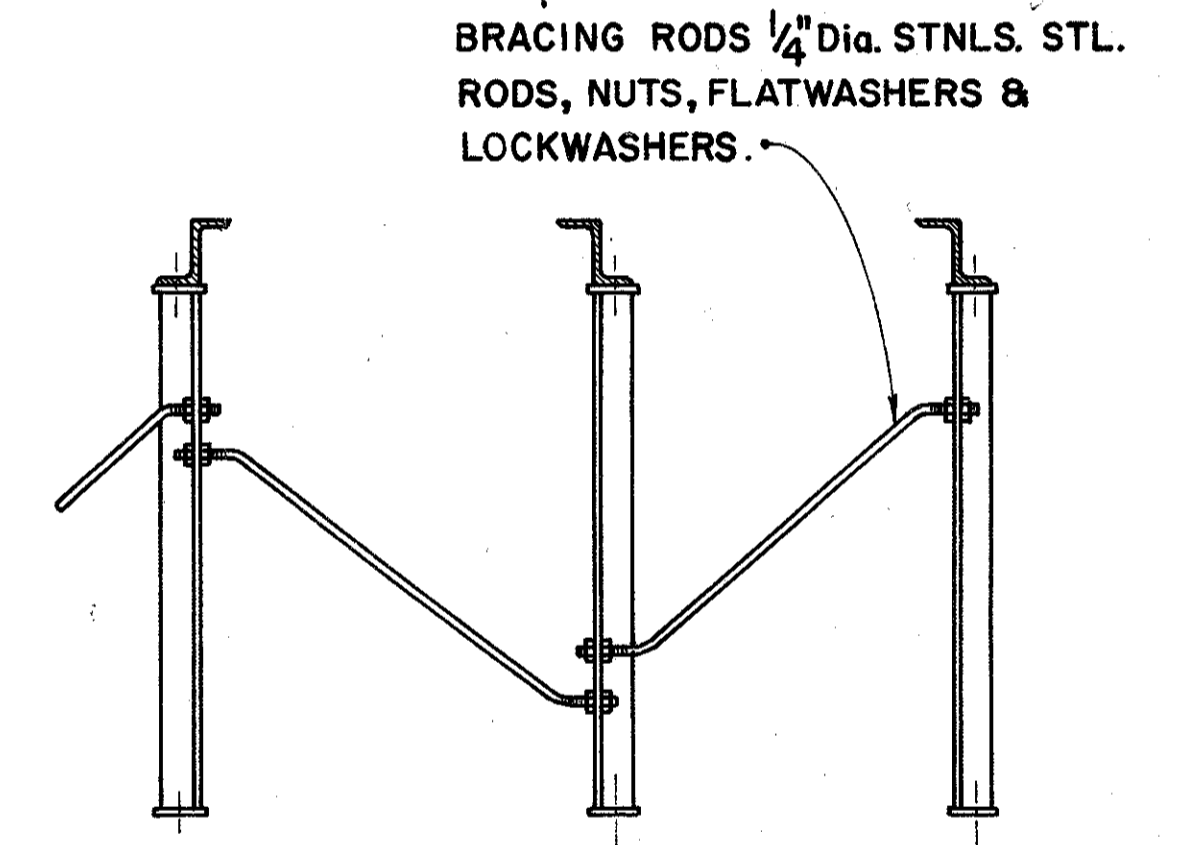
NOTE "A"
U-BOLTS, NUTS & WASHERS SHALL BE STAINLESS STEEL FOR USE WITH ALUMINUM TRUSS CHORDS. WHEN USED WITH GALVANIZED CHORDS, THE U-BOLT ONLY MAY BE GALVANIZED STEEL.

NOTE "B"
CONTACT BETWEEN ALUMINUM AND GALVANIZED PARTS MUST BE PREVENTED WITH A MIN. $\frac{1}{16}$ " THICK NEOPRENE GASKET OR APPROVED SUBSTITUTE. NO GASKET IS REQUIRED BETWEEN STAINLESS STEEL AND ALUMINUM.

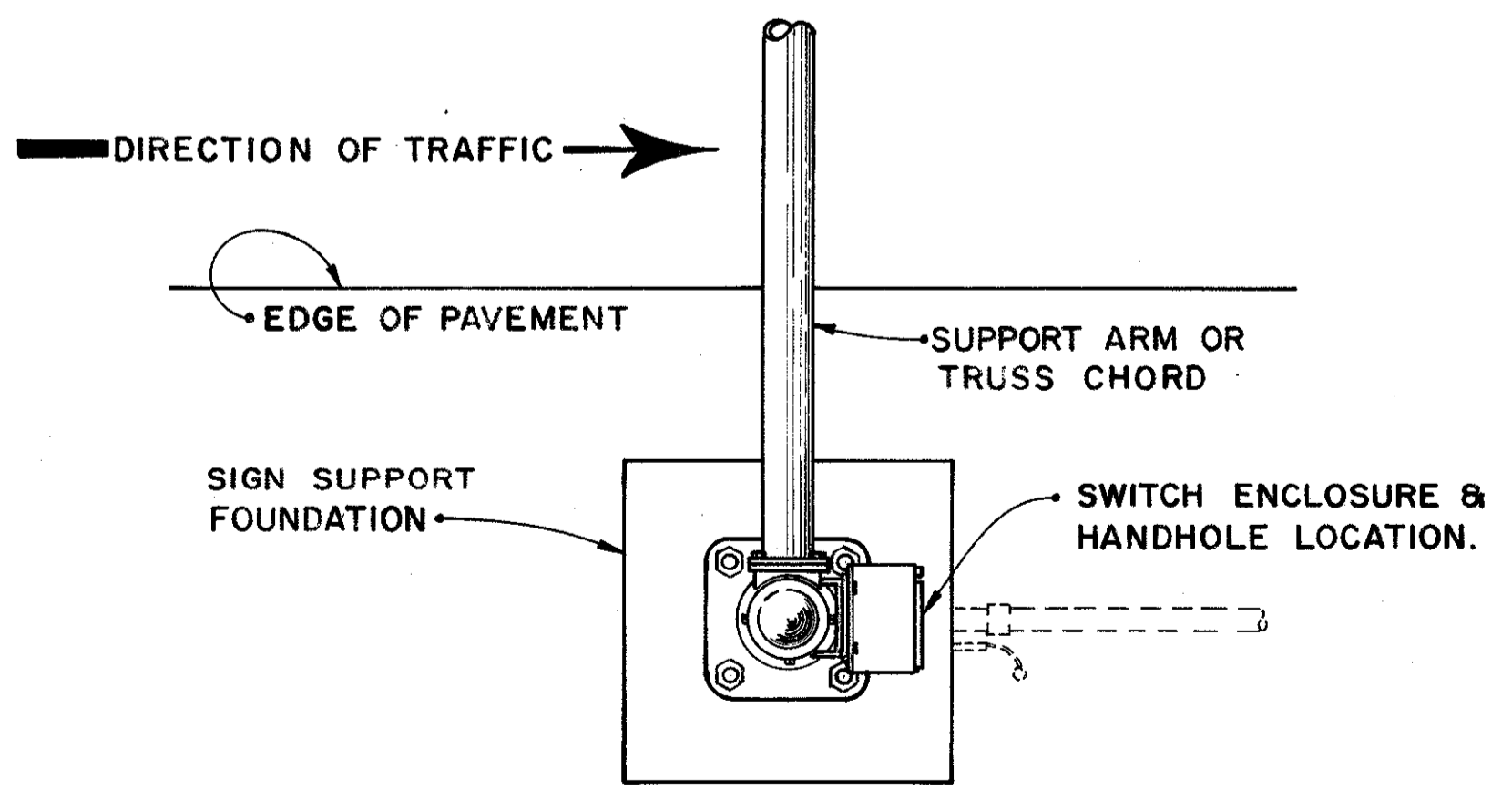
NOTE:
ALL STL. PARTS (EXCEPT STNLS.) SHALL BE GALVANIZED AFTER FABRICATION PER ASTM A-123.



SIGN ATTACHMENT FOR SINGLE CHORDS



BRACING ROD ARRANGEMENT



SWITCH ENCLOSURE & HANDHOLE ORIENTATION

BUREAU OF DESIGN SERVICES
OHIO DEPARTMENT OF HIGHWAYS

MISCELLANEOUS OVERHEAD SIGN SUPPORT DETAILS

DATE 3-23-72

STANDARD CONSTRUCTION 816-20.002
DRAWING

APPROVED *M. J. Cunningham*
ENGINEER OF DESIGN SERVICES