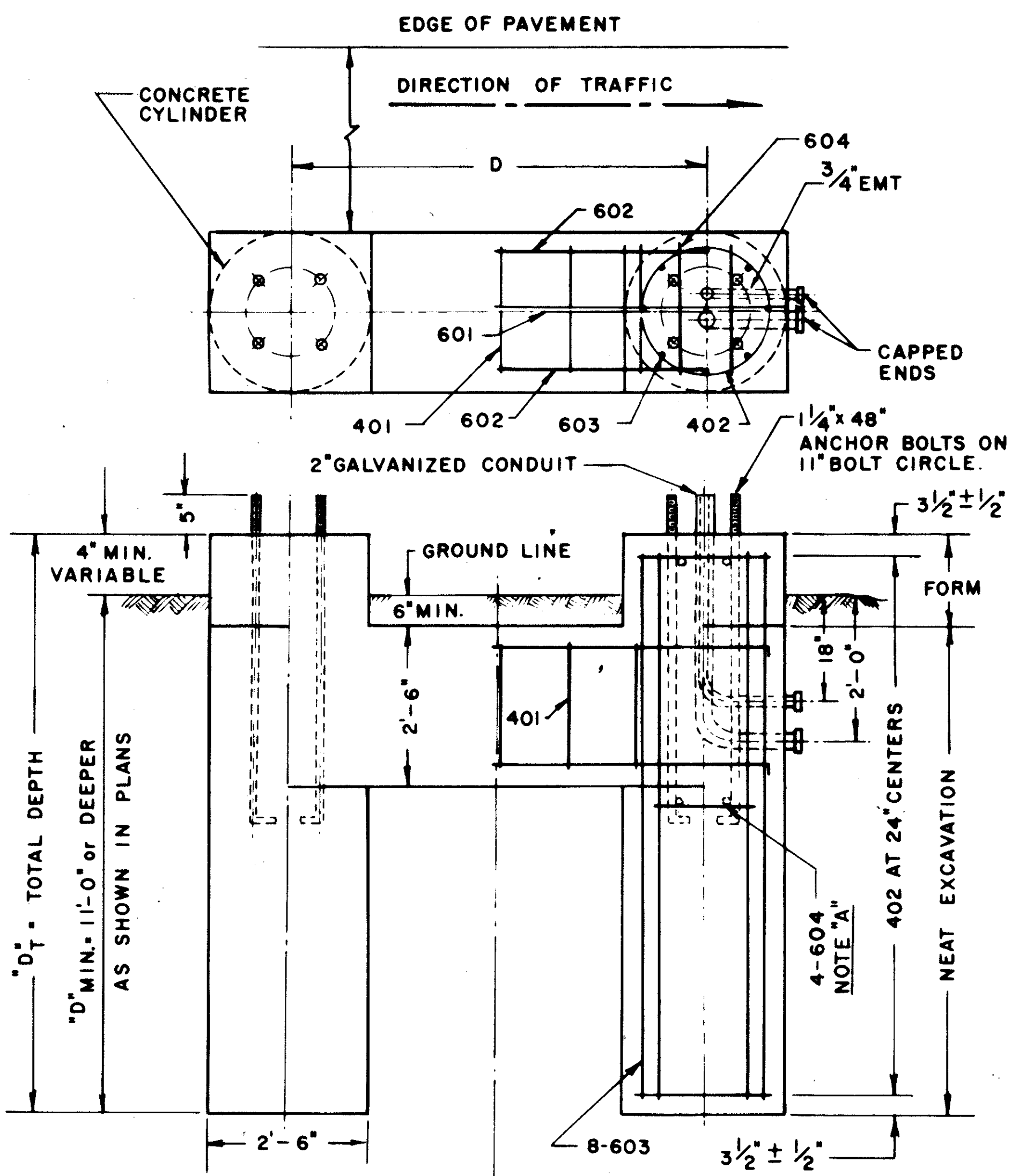


**816-12.30 FOUNDATIONS**

DESIGN NUMBERS	ANCHOR BOLTS (in.)	BOLT CIRCLE (in.)	"P" (in.)	"D" (ft.)
1 & 2	3/4 x 84	15	7 3/4	9
3 & 4	2 x 90	18	8 1/2	11
5 & 6	2 x 90	22	8 1/2	11
7, 8 & 9	2 1/2 x 114	23 1/2	9 3/4	15
10	2 1/2 x 114	25 1/2	9 3/4	17

MARK	NO.	LENGTH	TYPE
401	24 5/8	8'-6"	401
601	8	D_T 6"	STR.
602	4	2'-5"	STR.

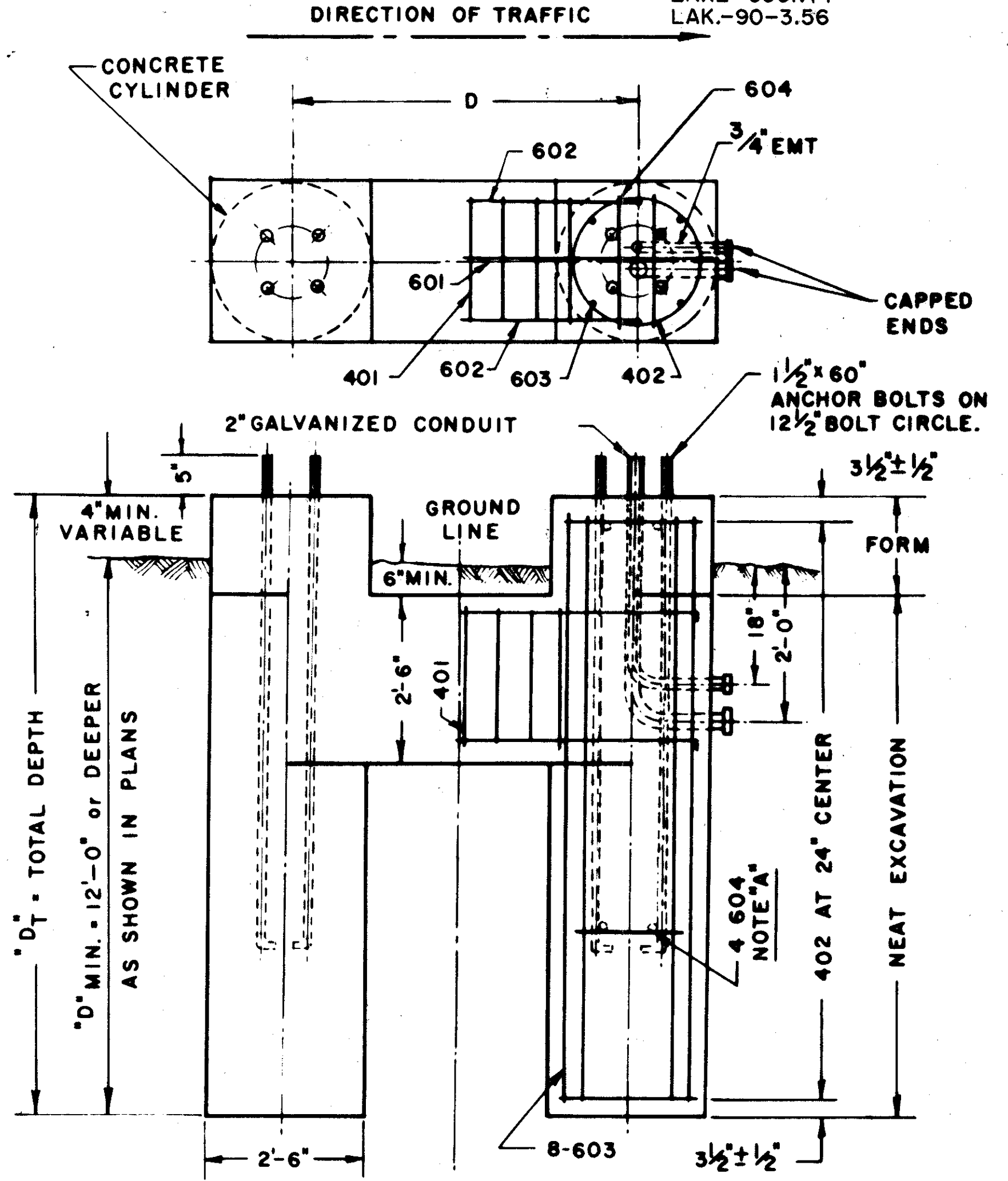


**816-7. x x FOUNDATIONS**  
(RIGHT HAND SHOWN - LEFT HAND OPPOSITE)

NOTE "A" TIE ANCHOR BOLTS TO REBAR CAGE NEAR TOP & BOTTOM OF ANCHOR BOLTS.

ALUMINUM TRUSS BOX SIZE	"D"
3'-0"	4'-5"
4'-0"	5'-7"
5'-0"	6'-7"

MARK	NO.	LENGTH	TYPE
401	12 5/8	8'-6"	401
402	24 5/8	7'-6"	402
601	4	D = 4'-0"	601
602	8	D = 2'-0"	602
603	32	D = 0'-6"	STR.
604	16	2'-0"	STR.



**816-15. x x FOUNDATIONS**  
(RIGHT HAND SHOWN - LEFT HAND OPPOSITE)

STEEL TRUSS BOX SIZE	"D"
3'-4" ±	5'-3"
5'-0"	6'-7"

MARK	NO.	LENGTH	TYPE
401	12 5/8	8'-6"	401
402	24 5/8	7'-6"	402
601	4	D ± 4'-0"	601
602	8	D ± 2'-0"	602
603	32	D ± 0'-6"	STR.
604	16	2'-0"	STR.

NOTE "A" TIE ANCHOR BOLTS TO REBAR CAGE NEAR TOP & BOTTOM OF ANCHOR BOLTS

BUREAU OF DESIGN SERVICES  
OHIO DEPARTMENT OF HIGHWAYS

**SIGN SUPPORT FOUNDATIONS**

STANDARD CONSTRUCTION **816-20.001**  
DRAWING

APPROVED *M. J. Cunningham*  
ENGINEER OF DESIGN SERVICES

DATE  
3-23-72