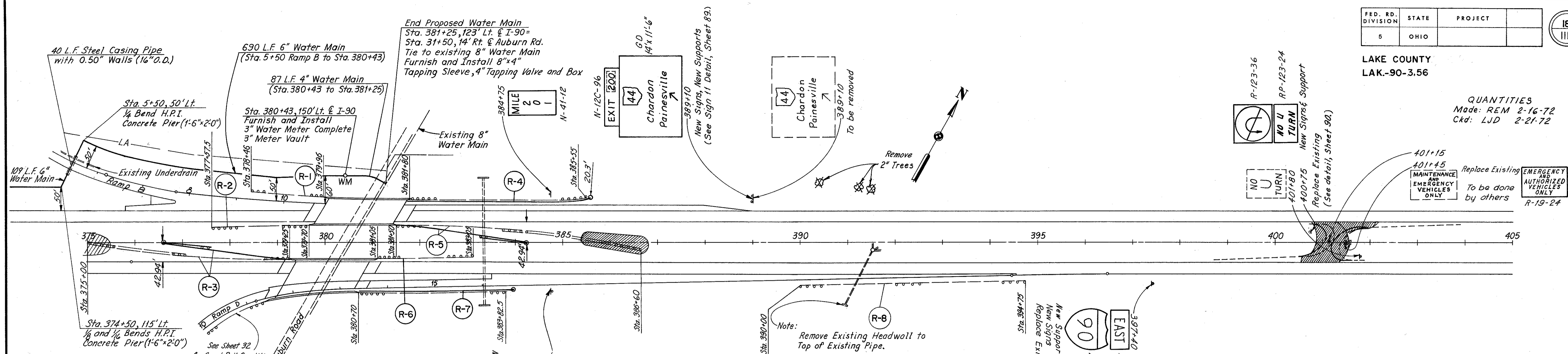


QUANTITIES
Made: REM 2-16-72
Ckd: LJD 2-27-72



Ref. No.	Station	Side	Fence			
			607 Type 47	607 Type CL	601 Rock Channel Protection Type B	
	From	To	Lin. Ft.	Lin. Ft.	Cu. Yds.	
F-1	414+50	WB	Lt.	19	7	
F-2	433+98	WB	Lt.	56		
F-3	433+79	EB	Rt.	41		
F-4	434+75	EB	Rt.	33		
F-5	435+50	WB	Lt.	62		
Totals				19	192	7

ITEM	DESCRIPTION	QUANTITY	UNIT
202	Portion of Structure Removed Sta. 391+00, Rt.	Lump	Lump

Ref. No.	Station	Side	GUARD RAIL								
			202 G.R. Removed for Reuse or Storage Painted	202 B.R. Removed for Reuse Painted	606 G.R. Type 5 as per plan	606 B.R. Type 5 as per plan	606 Anchor Assembly	606 Anchor Assembly, Barrier Design	606 Bridge Terminal Assembly		
	From	To	Lin. Ft.	Lin. Ft.	Lin. Ft.	Lin. Ft.	Each	Each	Type E	Type FM	
R-1	378+46	379+96	Lt.	150							
R-2	377+57.5	379+70	Lt.	212.5							
R-3	376+50	379+25	Rt.	225	202.5	175	75		1	1	
R-4	381+80	385+55	Lt.	375		350		1		1	
R-5	381+50	384+25	Lt.	225	287.5	175	75		1	1	
R-6	381+05	383+05	Rt.	200							
R-7	380+70	383+95	Rt.	312.5		300		1		1	
R-8	390+00	394+75	Rt.	475							
R-9	434+00	435+00	Lt.	62		75		1			
R-10	433+12.5	435+00	Q	137	25	325			1		
R-11	432+95.5	435+00	Rt.	137.5		179.5		1			
Totals				2511.5	515	1579.5	150	4	3	3	1

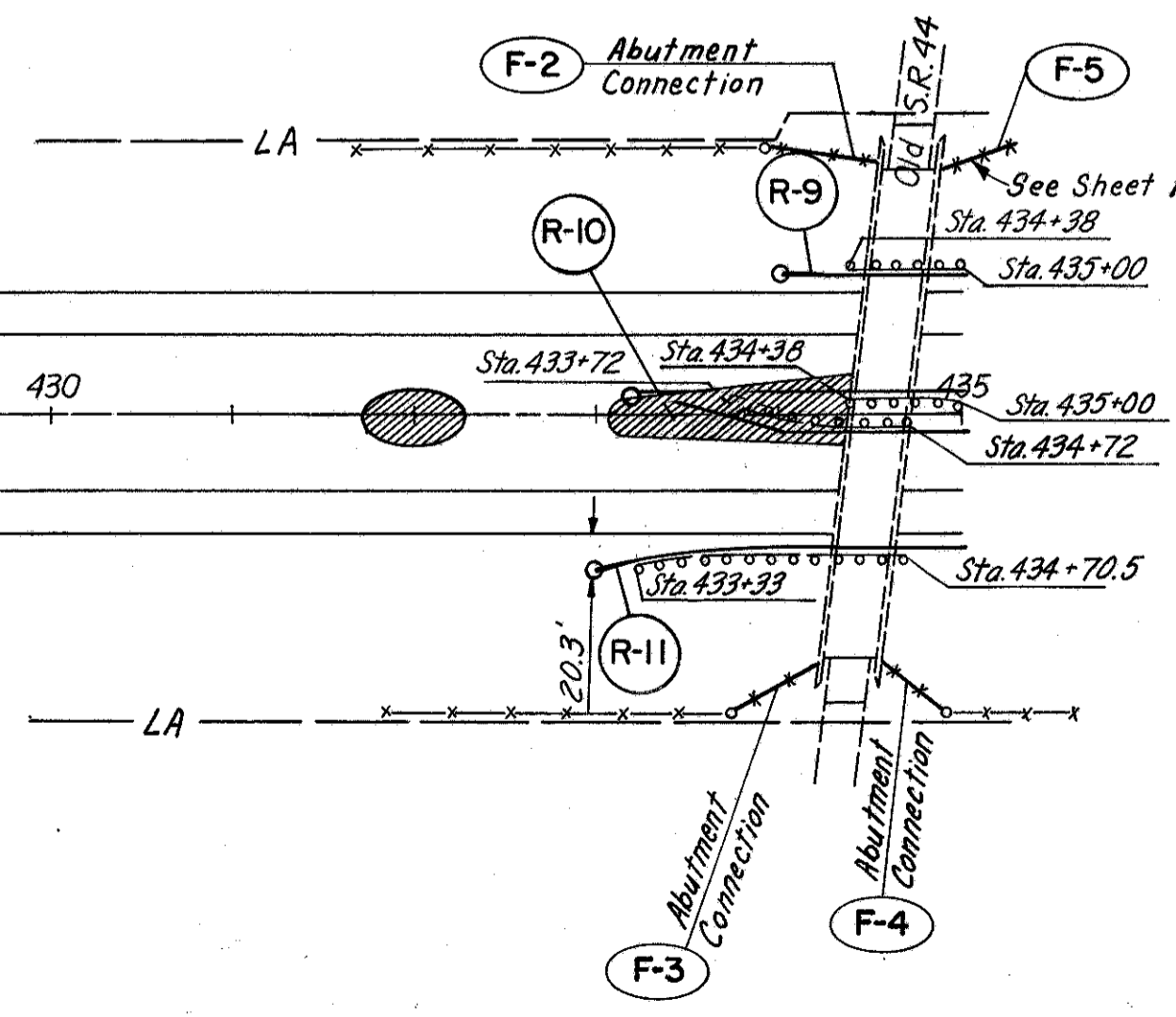
407+60 14' x 8'-6"
FOOD - PHONE
GAS - LODGING
HIGHWAY PATROL
CAMPING
NEXT RIGHT
New Sign
New Supports
(See Sign 12 Detail, Sheet 89.)

Remove 8" tree
407+60
GAS - FOOD
LODGING
NEXT RIGHT
To be removed

F-1 15' x 6' x 1.5' Rock
Channel Protection
Crossing Type B

418+10
HEADLANDS
STATE
PARKS
PUNDERSON
NEXT RIGHT
To be removed

422+100
Vrooman Rd. 3
Erie Pa. 70
New Sign, New Supports
422+100
Ashtrubula 30
Erie Pa. 70
To be removed



Note:
For Guard Rail placement See Sheet 47.
For Signing Quantities See Sheets 38, 43, & 90.
For Water Main Profiles see Sheet 109.

