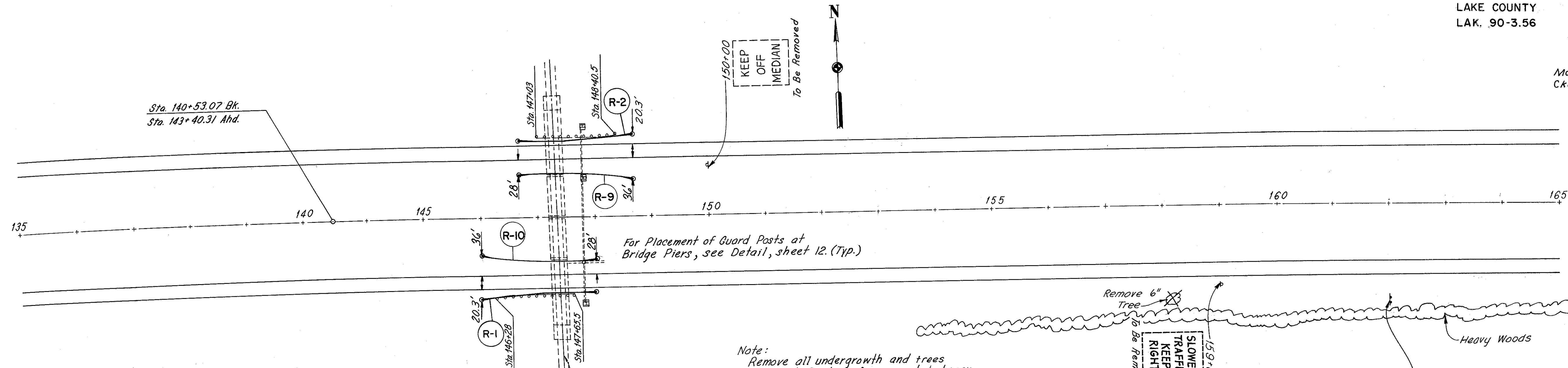


LAKE COUNTY
LAK. 90-3.56

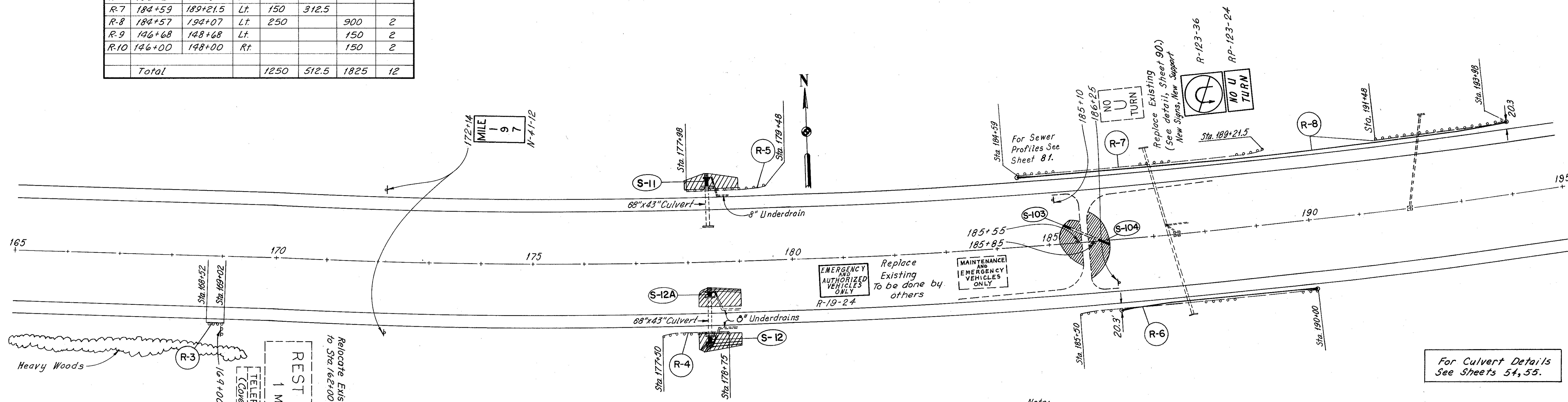
QUANTITIES
Made: LJD 2-21-72
Ckd: REM 2-23-72



GUARD RAIL							
Ref. No.	Station		Side	202	202	606	606
	From	To		GR Removed for Reuse or Storage	GR Removed for Reuse or Storage	GR Type 5 as per plan	Anchor Assembly
				Lin. Ft.	Lin. Ft.	Lin. Ft.	Each
R-1	146+00	148+00	Rt.	137.5		150	2
R-2	146+68	148+68	Lt.	137.5		150	2
R-3	168+52	169+02	Rt.		50		
R-4	177+50	178+75	Rt.	125			
R-5	177+98	179+48	Lt.		150		
R-6	186+25	190+00	Rt.	450		325	2
R-7	184+59	189+21.5	Lt.	150	312.5		
R-8	184+57	194+07	Lt.	250		900	2
R-9	146+68	148+68	Lt.			150	2
R-10	146+00	148+00	Rt.			150	2
	Total			1250	512.5	1825	12

For Placement of Guard Posts at Bridge Piers, see Detail, sheet 12. (Typ.)

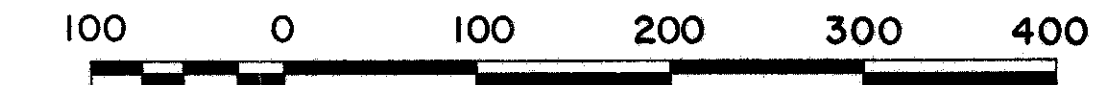
Note: Remove all undergrowth and trees within 40' of edge of pavement between Sta. 148+00 to Sta. 162+00.



Note: For Guard Rail Placement See Sheet 47. For Signing Quantities See Sheets 36 & 90.

For Culvert Details See Sheets 54, 55.

SCALE 1" = 100'
HOWARD, NEEDLES, TAMMEN & BERGENDOFF
MADE LJD DATE 2-21-72 CONSULTING ENGINEERS
TRCD RCK DATE 2-23-72 CLEVELAND NEW YORK
CKD REM DATE 2-23-72 KANSAS CITY CLEVELAND NEW YORK



SCALE IN FEET