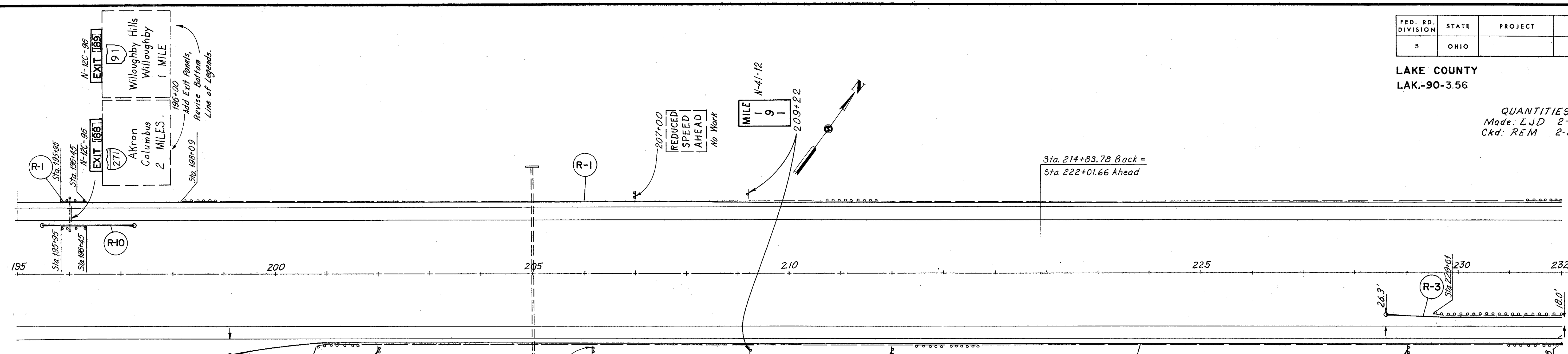


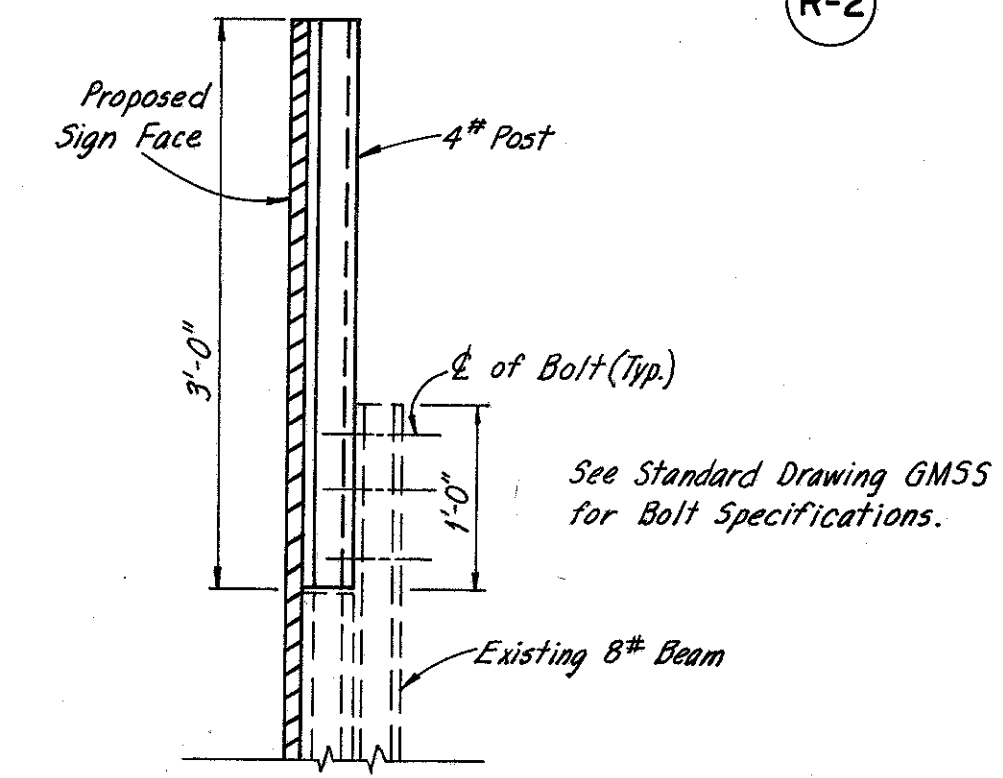
LAKE COUNTY  
LAK.-90-3.56

QUANTITIES  
Made: LJD 2-15-72  
Ckd: REM 2-21-72

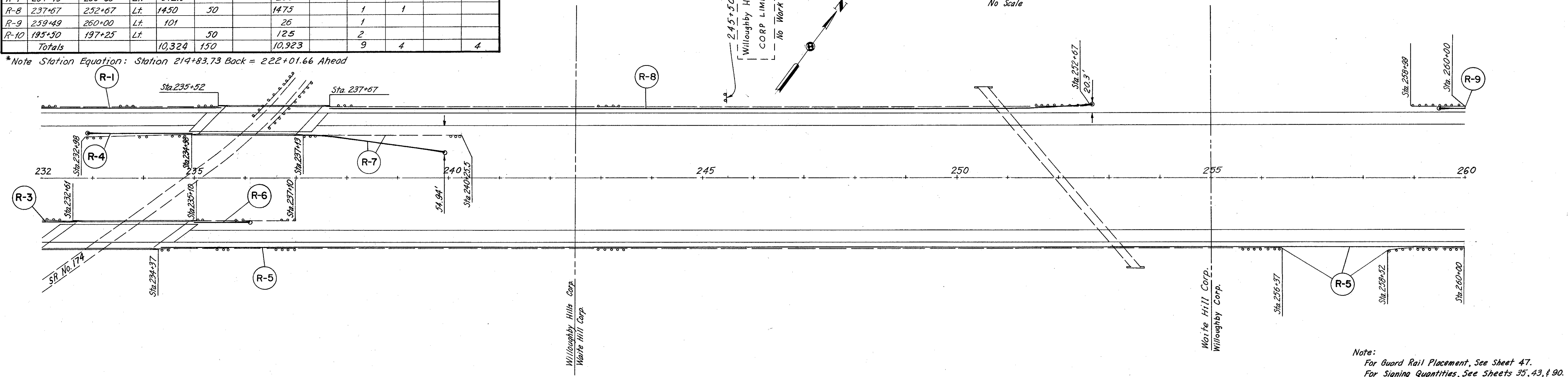


Ref. No.	Station	Side	GUARD RAIL					
			202		606		606	
			G.R. Removed for Reuse or Storage Painted	G.R. Removed for Reuse Galv.	G.R. Type 5 as per plan	Anchor Assembly	Bridge Terminal Assembly	
From	To	Lin. Ft.	Lin. Ft.	Lin. Ft.	Each	Type E	Type FM	
R-1	195+00	235+52	Lt. 3025	50	3334			1
R-2	199+20	231+88	Rt. 2387.5		252.5	1	1	
R-3	228+61	232+61	Rt. 300		375	1	1	
R-4	232+98	234+98	Lt. 200		175	1		1
R-5	234+37	260+00	Rt. 2348		2563			1
R-6	235+10	236+10	Rt. 200		75	1		1
R-7	237+13	239+88	Lt. 312.5		250	1	1	
R-8	237+67	232+67	Lt. 1450	50	1475	1	1	
R-9	239+49	260+00	Lt. 101		26	1		
R-10	195+50	197+25	Lt. 125	50	12.5	2		
Totals			10,324	150	10,923	9	4	4

\*Note Station Equation: Station 214+83.73 Back = 222+01.66 Ahead



SUPPORT EXTENSION DETAIL  
SPEED LIMIT SIGNS  
No Scale



Note:  
For Guard Rail Placement, See Sheet 47.  
For Signing Quantities, See Sheets 35, 43, & 90.

SCALE 1" = 100'  
HOWARD, NEEDLES, TAMMEN & BERGENDOFF  
MADE LJD DATE 2-15-72  
TRCD GT DATE 2-17-72 CONSULTING ENGINEERS  
CKD REM DATE 2-21-72 KANSAS CITY CLEVELAND NEW YORK

