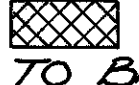
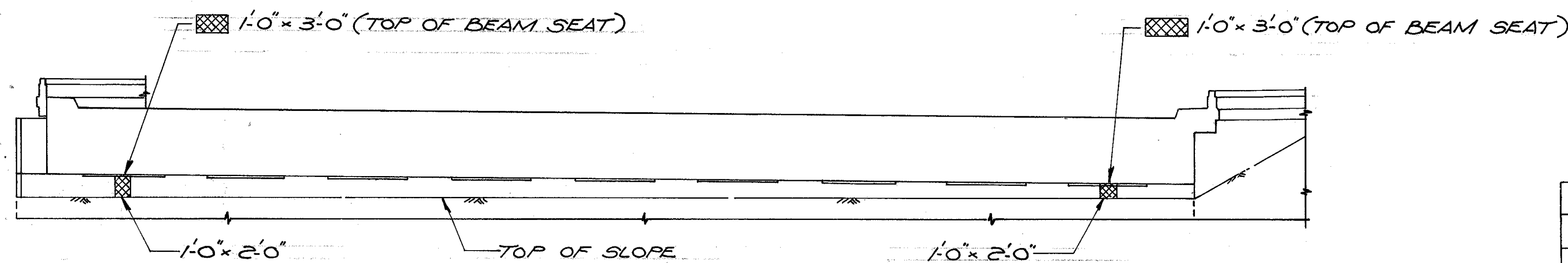


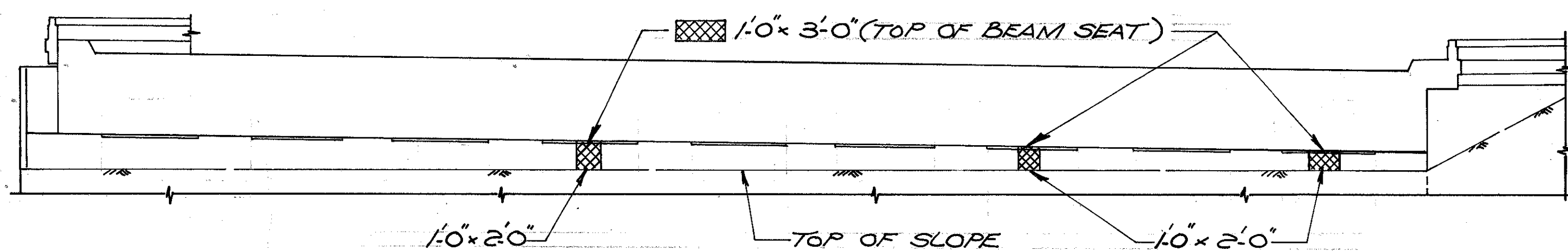
NOTES

- ① PHYSICAL INVENTORY OF MEASURED QUANTITIES OF DETERIORATION WAS PERFORMED IN FEBRUARY 1990
- ②  INDICATES MEASURED AREA TO BE PATCHED. ABUTMENT REPAIRS SHALL BE MADE PER ITEM 519-PATCHING CONCRETE STRUCTURES AS PER PLAN. PIER REPAIRS SHALL BE MADE PER ITEM SPECIAL-PNEUMATICALLY PLACED MORTAR, MISC. COLUMN REPAIRS.

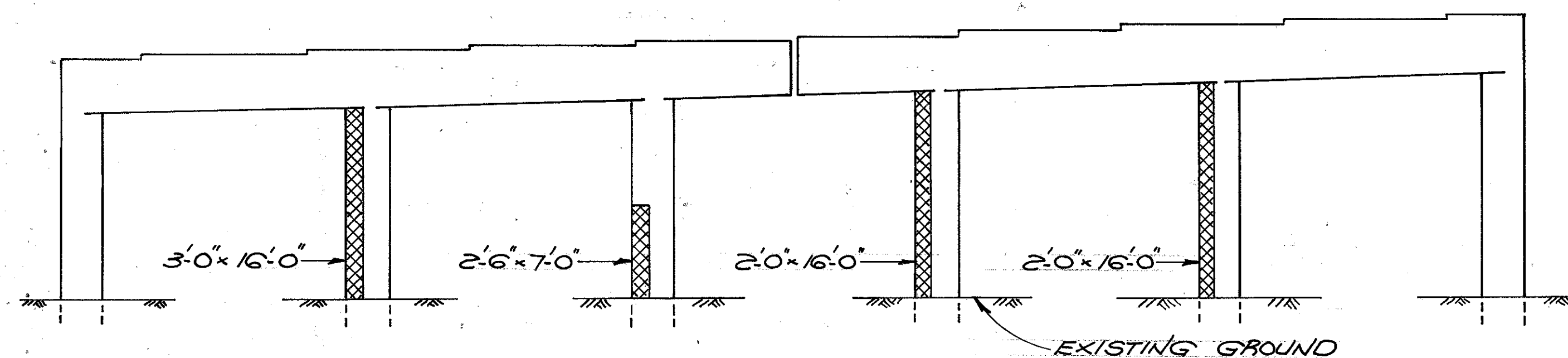
CONCRETE PATCH AREA	
LOCATION	PATCH AREA (SQ. FT.)
ABUT. A-1	12.5
PIER P.1	162.0
PIER P.2	0
PIER P.3	97.5
PIER P.4	5
PIER P.5	39.5
ABUT. A-2	18.5



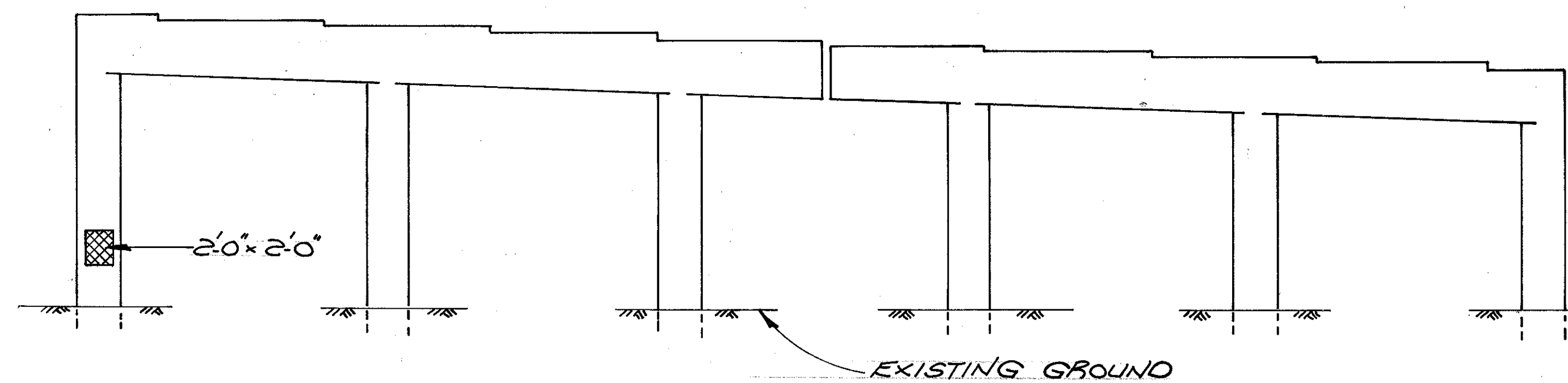
ABUTMENT A-1



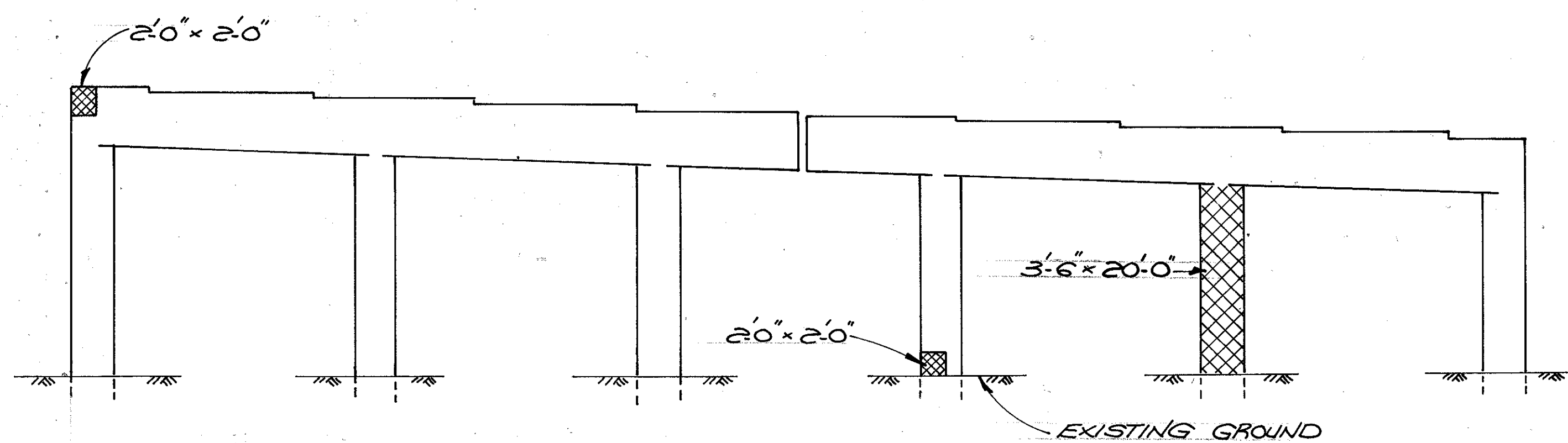
ABUTMENT A-2



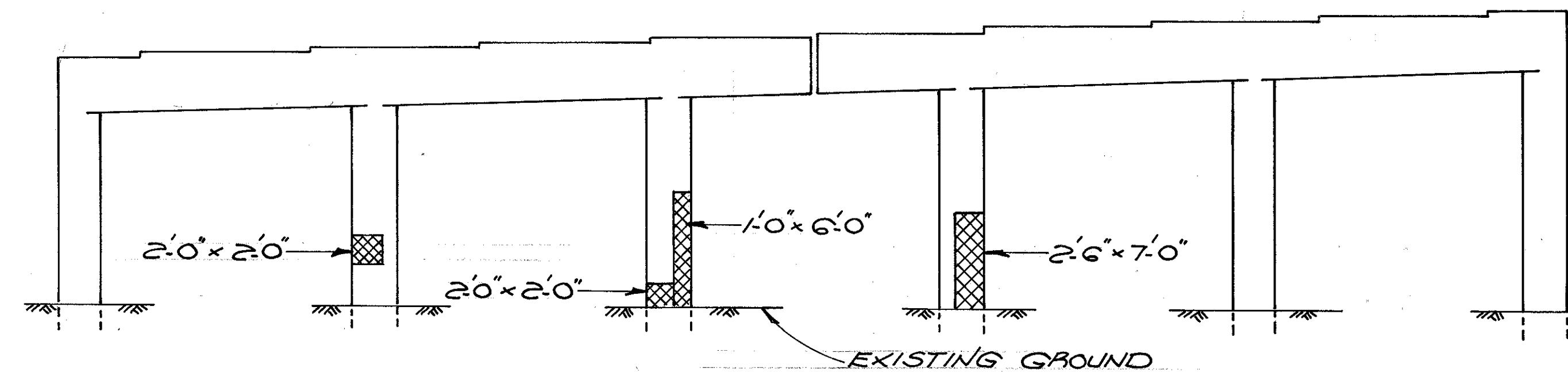
PIER P-1
(SOUTH FACE)



PIER P-4
(NORTH FACE)



PIER P-3
(NORTH FACE)



PIER P-5
(SOUTH FACE)

URS					
ABUTMENT AND PIER PATCHING					9/16
BRIDGE N° LAK-90-0328					
S.R. 91 OVER I-90					
LAKE COUNTY			WILLOUGHBY HILLS		
STA 26+74.51 TO STA 33+04.07					
DESIGNED	DRAWN	TRACED	CHECKED	REVIEWED	DATE
9/2	JWN		9/2	JWN	10-17-90