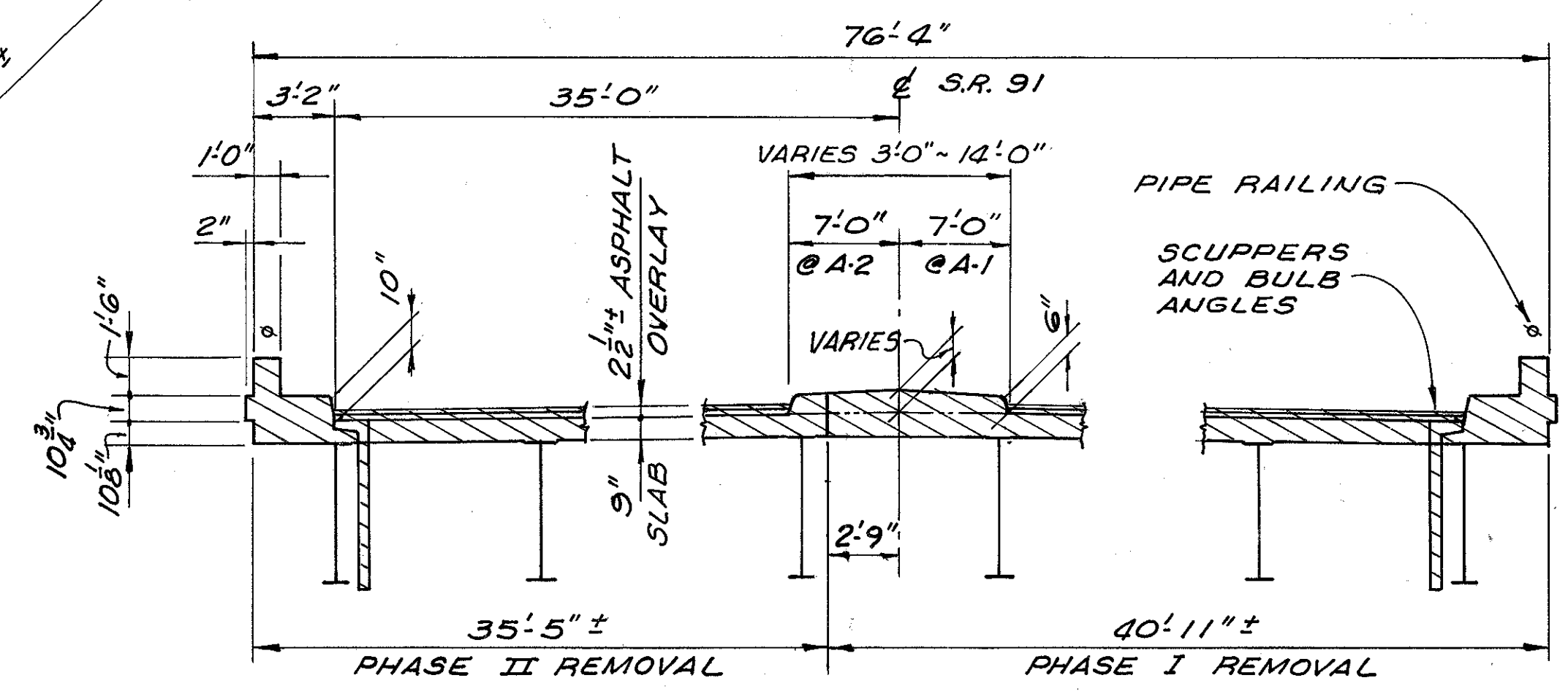


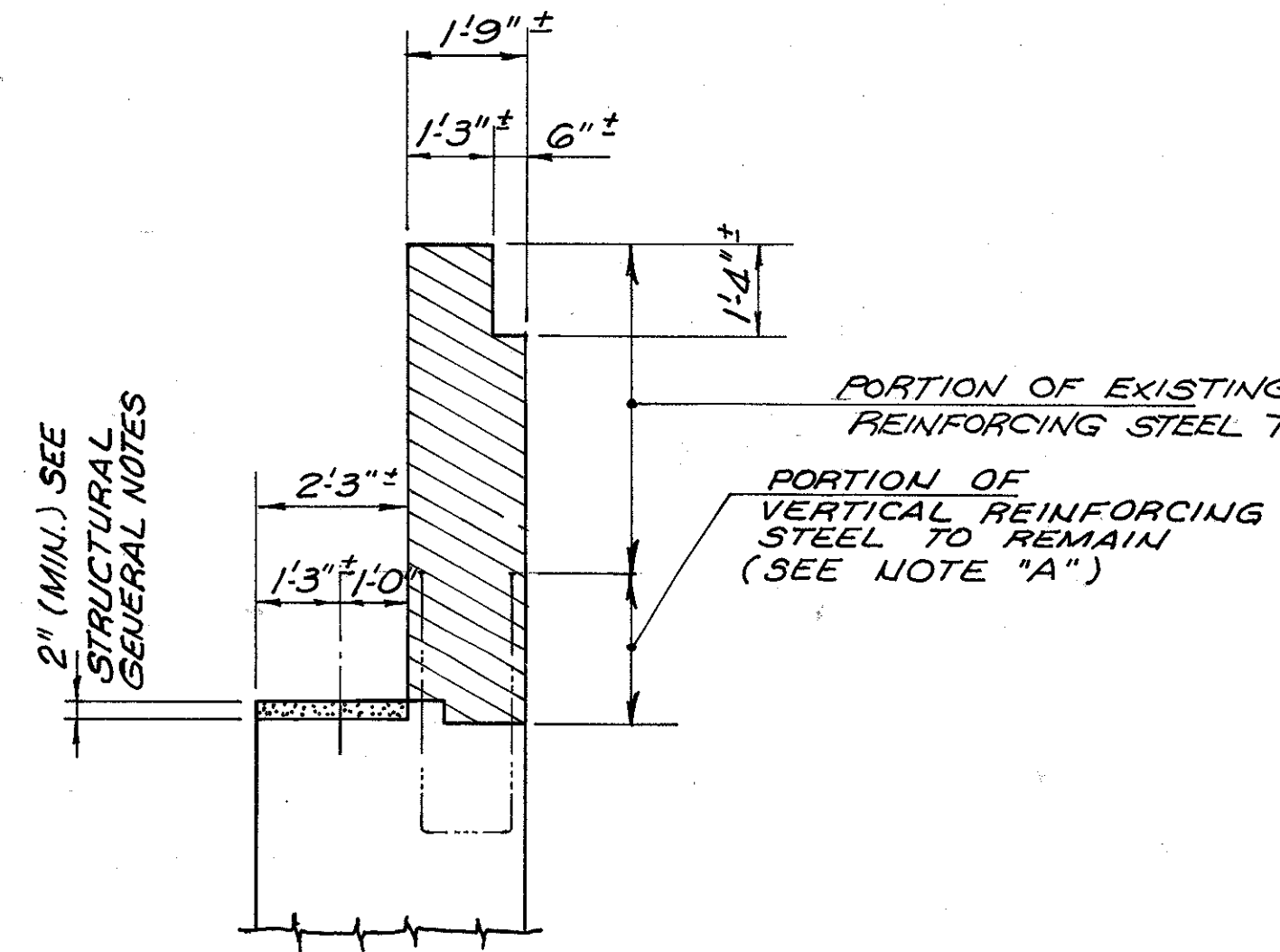
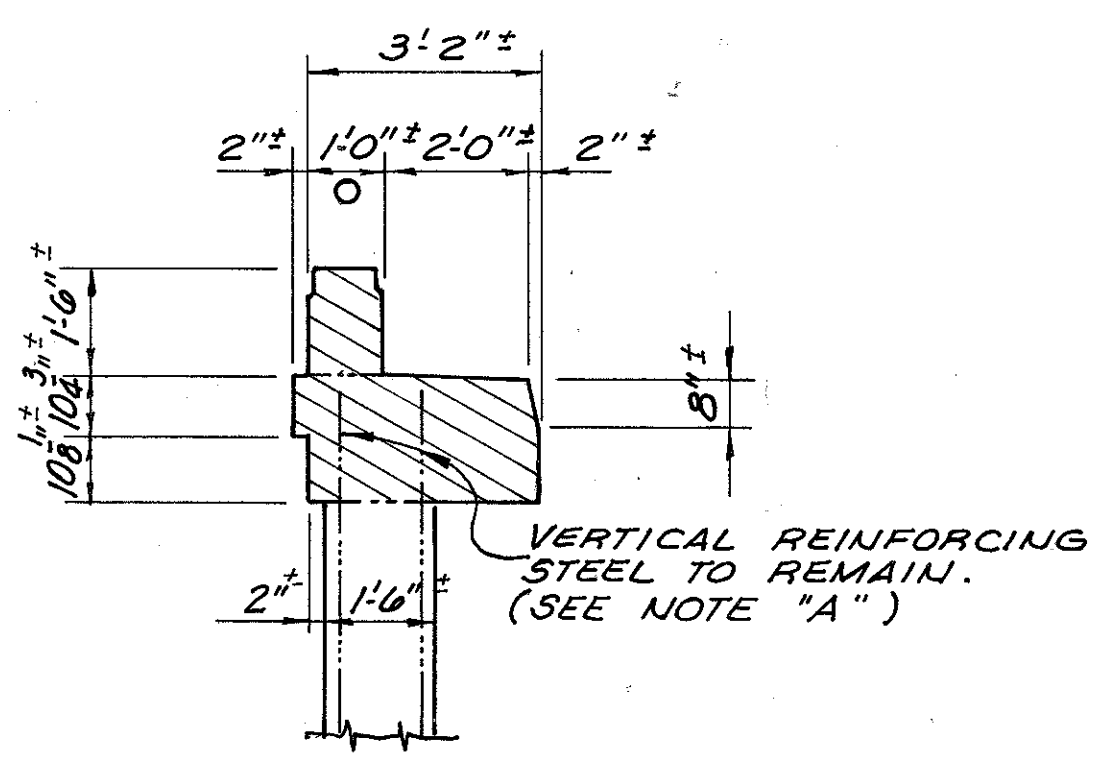
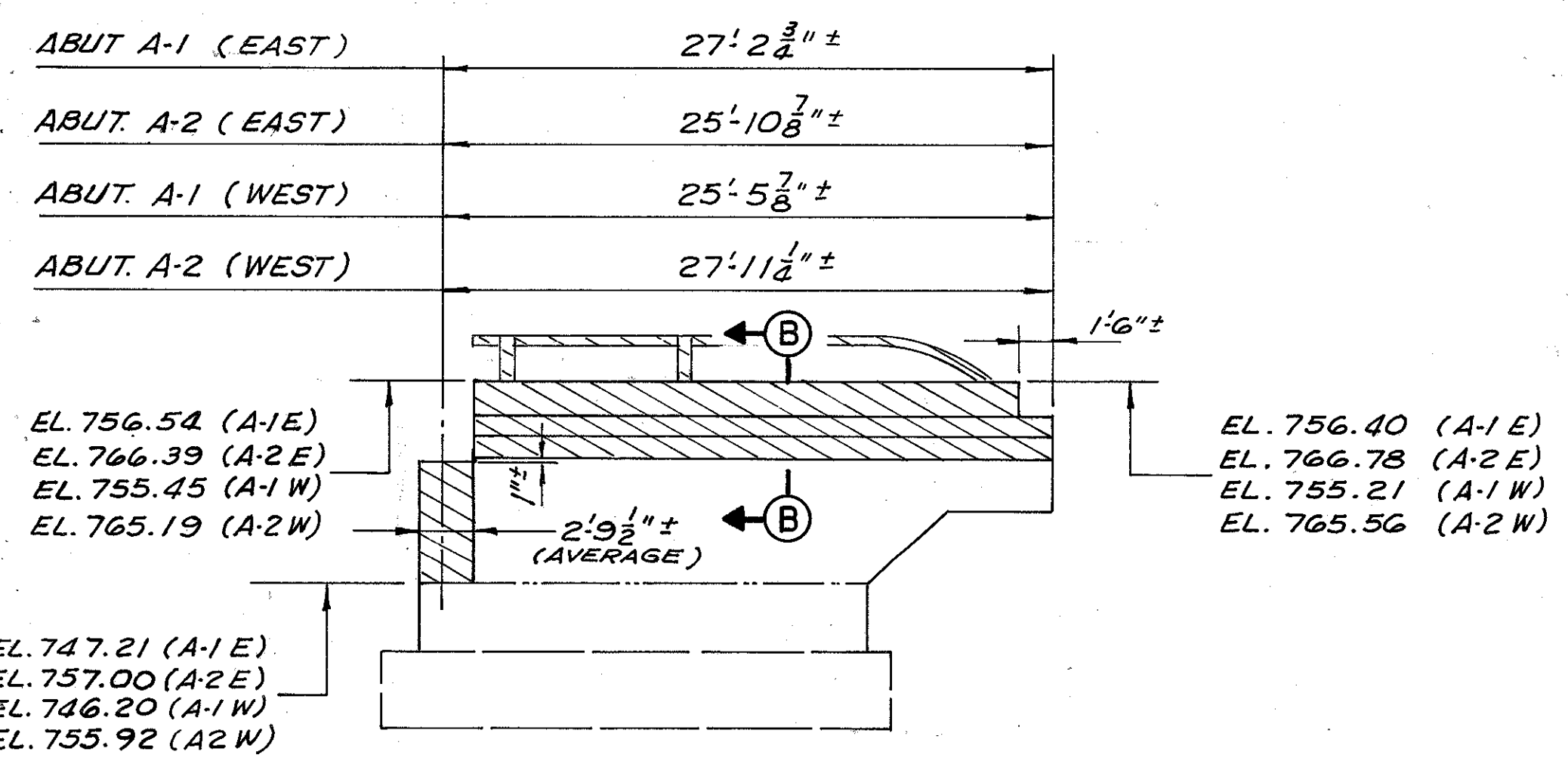
TYPICAL ABUTMENT - PLAN & ELEVATION



THE FOLLOWING ARE APPROXIMATE QUANTITIES FOR SOME OF THE MAJOR ITEMS TO BE REMOVED:

RAILING AND POST.....	1340 LF.
ASPHALT OVERLAY (2 1/2" THICK).....	4350 S.Y.
SUPERSTRUCTURE, W/ PARAPETS.....	1625 C.Y.
ABUTMENTS, W/ WALLS & PARAPETS.....	110 C.Y.
STRUCTURAL STEEL, END CROSSFRAMES.....	20100 LBS.

THE ABOVE REMOVAL QUANTITIES HAVE BEEN ARRIVED AT USING THE EXISTING STRUCTURE PLANS AND HAVE BEEN GIVEN FOR INFORMATION ONLY AND ARE NOT TO BE USED FOR ANY OTHER PURPOSE. IT IS THE CONTRACTORS RESPONSIBILITY TO ARRIVE AT THE ACTUAL REMOVAL QUANTITIES FOR DEVELOPMENT OF HIS/HER BID PRICE FOR ITEM 202, PORTIONS OF STRUCTURE REMOVED.



LEGEND

INDICATES - ITEM 202, PORTIONS OF STRUCTURE REMOVED.

INDICATES - AREAS TO BE REMOVED (ABUTMENT A-1 ONLY) AND SHALL BE INCLUDED WITH ITEM 202, PORTIONS OF STRUCTURE REMOVED, FOR PAYMENT.

NOTE

FOR ADDITIONAL INFORMATION SEE STRUCTURAL GENERAL NOTES, SHEETS 1/16 ~ 2/16.

URS	
5/16	
REMOVAL DETAILS	
BRIDGE N° LAK-90-0328	
S.R. 91 OVER I-90	
LAKE COUNTY WILLoughby HILLS	
STA. 26+74.51 TO STA 33+04.07	
DESIGNED	DATE
DRAWN	DATE
TRACED	DATE
CHECKED	DATE
REVIEWED	DATE
REVISED	DATE