

F.H.W.A. REGION	STATE	PROJECT	
5	OHIO		

26
38

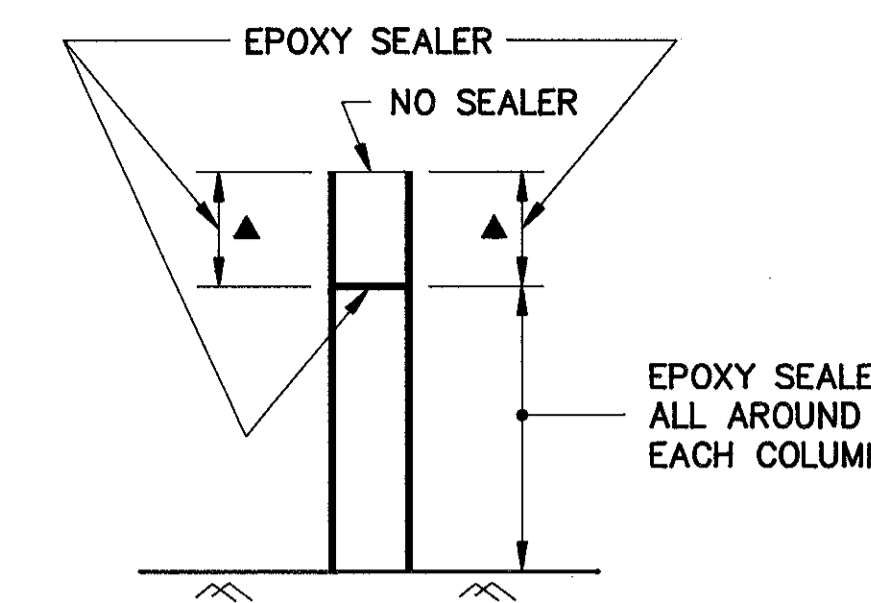
LAK-90-3.28
LAKE COUNTY

NOTES

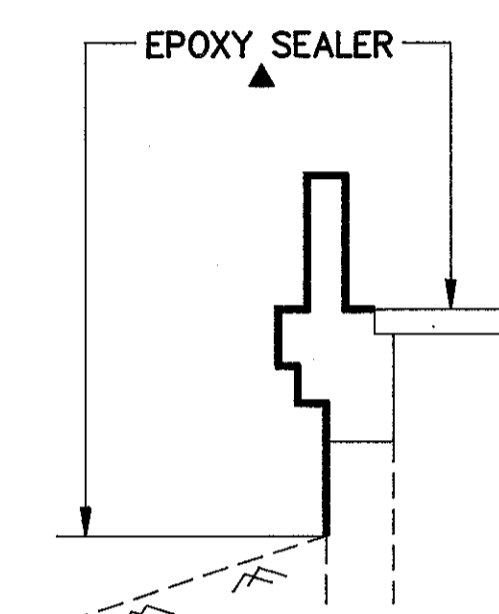
- EXACT DIMENSIONS OF THE REPAIR AREAS SHALL BE DETERMINED BY THE ENGINEER IN THE FIELD FOR FINAL PAY QUANTITY.
- THE ESTIMATED QUANTITY FOR ITEM 510 - DOWEL HOLES INCLUDES AN ALLOWANCE OF 60 L.F. FOR ANTICIPATED REPLACEMENT OF CORRODED ABUTMENT REINFORCING. THE FINAL QUANTITY WILL BE DETERMINED BY THE ENGINEER IN THE FIELD.
- ITEM 513 STRUCTURAL STEEL, AISC CERTIFICATION NOT REQUIRED INCLUDES THE NEW END CROSS FRAME (SEE SEC. AA SHEET 10/16), REPLACEMENT OF ONE INTERMEDIATE CROSS FRAME ANGLE (SEE SHEET 10/16) AND CURB PLATES WITH THEIR SUPPORT ANGLES AND SUPPORT ANCHORS (SEE SHEET 12/16)

ITEM	ITEM EXT.	TOTAL	UNIT	DESCRIPTION	SUPER.	ABUT.	PIER	GEN.
202	11200	LUMP	L.S.	PORTIONS OF STRUCTURES REMOVED				LUMP
503	11100	LUMP	L.S.	COFFERDAMS, CRIBS AND SHEETING				LUMP
509	15800	342352	LB.	EPOXY COATED REINFORCING STEEL, GRADE 60	330982	11370		
510	11100	1082	EA.	DOWEL HOLES	982	100		
511	71100	1710	C.Y.	CONCRETE MISC: SUPERPLASTICIZED CONCRETE SUPERSTRUCTURE *	1710			
511	45700	117	C.Y.	CLASS C CONCRETE, ABUTMENT		117		
SPEC.	51267502	3795	S.Y.	SEALING OF CONCRETE SURFACES (EPOXY) *	2500	390	905	
513	00100	28025	LB.	STRUCTURAL STEEL, AISC CERTIFICATION NOT REQUIRED,	28025			
SPEC.	51316800	25	EACH	STRUCTURAL STEEL, MISC: (CROSS FRAME REPAIR)	25			
SPEC.	51400050	118,960	S.F.	SURFACE PREPARATION OF EXISTING STEEL, SYSTEM OZEU *	118,960			
SPEC.	51400056	118,960	S.F.	FIELD PAINTING OF EXISTING STEEL - PRIME COAT, SYSTEM OZEU *	118,960			
SPEC.	51400060	118,960	S.F.	FIELD PAINTING OF EXISTING STEEL - INTERMEDIATE COAT, SYSTEM OZEU *	118,960			
SPEC.	51400066	118,960	S.F.	FIELD PAINTING OF EXISTING STEEL - FINISH COAT, SYSTEM OZEU *	118,960			
SPEC.	51400500	25000	L.F.	CAULKING *	25000			
SPEC.	51426500	LUMP	L.S.	HAZARDOUS WASTE MANAGEMENT *	LUMP			
SPEC.	51426510	LUMP	L.S.	NON-HAZARDOUS WASTE MANAGEMENT *	LUMP			
SPEC.	51400610	28025	LB.	FIELD PAINTING OF NEW STEEL, SYSTEM IZEU *	28025			
516	11200	218	L.F.	STRUCTURAL EXPANSION JOINTS (INCLUDING STEEL RETAINER AND STRIP SEAL GLAND)	218			
516	46701	30	EA.	RESET BEARING, AS PER PLAN		20	10	
516	47001	LUMP	L.S.	JACKING AND TEMPORARY SUPPORT OF SUPERSTRUCTURE, AS PER PLAN	LUMP			
517	75301	1353	L.F.	RAILING, CONCRETE PARAPET WITH CHAIN LINK FENCE, AS PER PLAN	1252	101		
518	12300	8	EA.	SCUPPER, INCLUDING SUPPORTS (FOR GIRDER BRIDGE)	8			
518	21200	109	C.Y.	POROUS BACKFILL WITH FILTER FABRIC		109		
SPEC	51924000	10	EA.	RECONSTRUCT CONCRETE BEARING SEATS		10		
519	11101	31	S.F.	PATCHING CONCRETE STRUCTURES, AS PER PLAN		31		
SPEC	52011500	304	S.F.	PNEUMATICALLY PLACED MORTAR, MISC. COLUMN REPAIRS *			304	
601	20000	1756	S.Y.	CRUSHED AGGREGATE SLOPE PROTECTION				1756

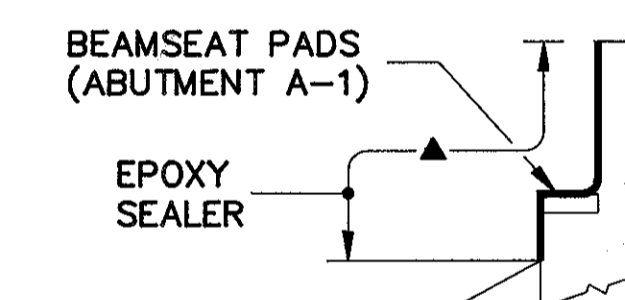
* DENOTES : (SEE PROPOSAL NOTE)



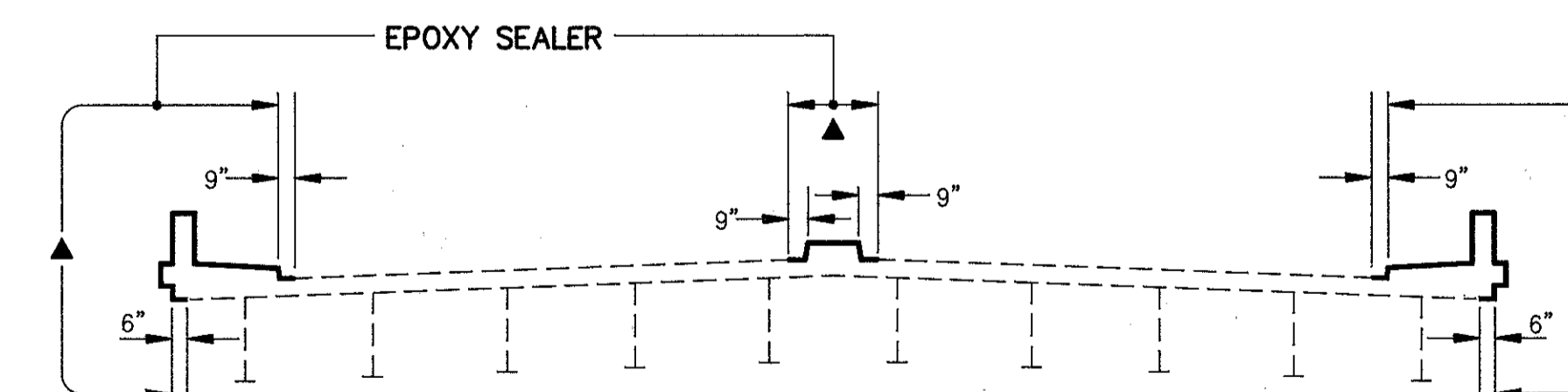
PIER 1,2,3,4 & 5



WING WALLS



ABUTMENTS



SUPERSTRUCTURE

▲ LIMITS FOR THE SEALING OF CONCRETE SURFACES

QUANTITIES	
CALCULATED BY: ALH	DATE: 10/90
CHECKED BY: JTH	DATE: 10/90

URS

4/16

ESTIMATED QUANTITIES

BRIDGE No. LAK-90-0328
S.R. 91 OVER I-90
LAKE COUNTY WILLOUGHBY HILLS
STA. 26+74.51 TO STA. 33+04.07

DESIGNED	DRAWN	TRACED	CHECKED	REVIEWED	DATE	REVISED
ALH	M.E.		JTH		10/90	