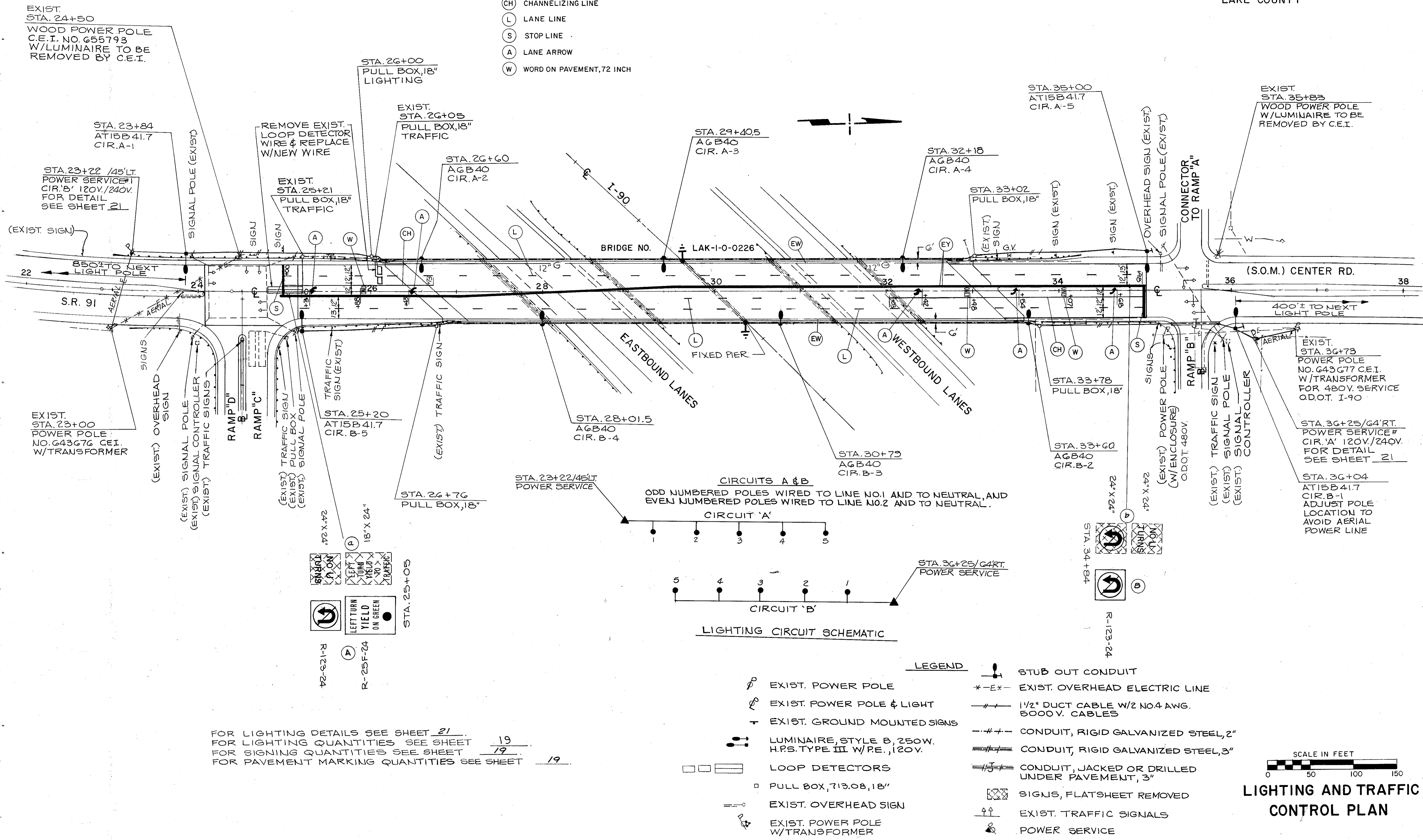


PAVEMENT MARKING LEGEND

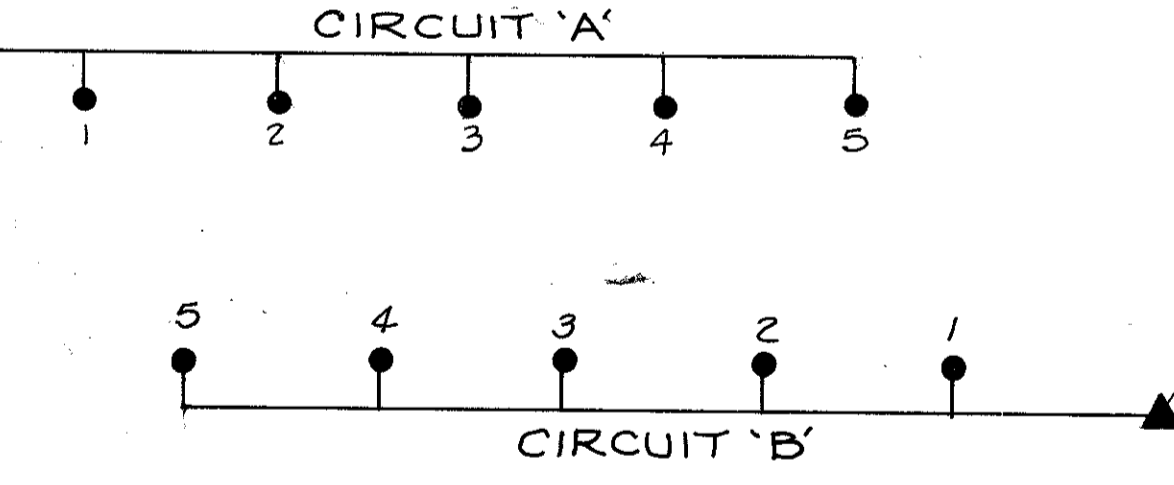
- (EW) EDGE LINE, WHITE
- (EY) EDGE LINE, YELLOW
- (CH) CHANNELIZING LINE
- (L) LANE LINE
- (S) STOP LINE
- (A) LANE ARROW
- (W) WORD ON PAVEMENT, 72 INCH

LAK-90-3.28

LAKE COUNTY



CIRCUITS A & B  
 ODD NUMBERED POLES WIRED TO LINE NO.1 AND TO NEUTRAL, AND  
 EVEN NUMBERED POLES WIRED TO LINE NO.2 AND TO NEUTRAL.



LIGHTING CIRCUIT SCHEMATIC

LEGEND

- (P) EXIST. POWER POLE
- (P) EXIST. POWER POLE & LIGHT
- (+ ) EXIST. GROUND MOUNTED SIGNS
- (L) LUMINAIRE, STYLE B, 250W. H.P.S. TYPE III W/ P.E., 120V.
- (□) LOOP DETECTORS
- (□) PULL BOX, 713.08, 18"
- (---) EXIST. OVERHEAD SIGN
- (---) EXIST. POWER POLE W/ TRANSFORMER
- (|) STUB OUT CONDUIT
- (-EX-) EXIST. OVERHEAD ELECTRIC LINE
- (---) 1/2" DUCT CABLE W/ 2 NO.4 AWG. 5000V. CABLES
- (---) CONDUIT, RIGID GALVANIZED STEEL, 2"
- (---) CONDUIT, RIGID GALVANIZED STEEL, 3"
- (---) CONDUIT, JACKED OR DRILLED UNDER PAVEMENT, 3"
- (X) SIGNS, FLATSHEET REMOVED
- (+ ) EXIST. TRAFFIC SIGNALS
- (P) POWER SERVICE

FOR LIGHTING DETAILS SEE SHEET 21  
 FOR LIGHTING QUANTITIES SEE SHEET 19  
 FOR SIGNING QUANTITIES SEE SHEET 19  
 FOR PAVEMENT MARKING QUANTITIES SEE SHEET 19

