

LOCATION PLAN

LAK - I - 12.89
 CONCORD TOWNSHIP
 LAKE COUNTY



MONUMENTS TO BE SET AFTER CONSTRUCTION			
STATION	☉	STATION	☉
424+00	P.O.T.	472+00	P.O.T.
433+79.37 P.C.		480+00	
440+00	P.O.C.	488+00	
448+00		496+00	
456+58.83 Bk.=	P.T.	504+00	
456+61.36 Ah.		512+00	
465+00	P.O.T.		

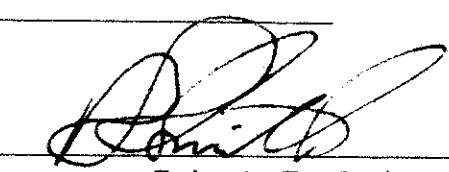
Received _____ Time _____
 Recorded _____
 Plat Book M Page 52 # 52-1
 Signed _____ Recorder, Lake County, Ohio
 Fee _____ Paid _____

471
488

2
19

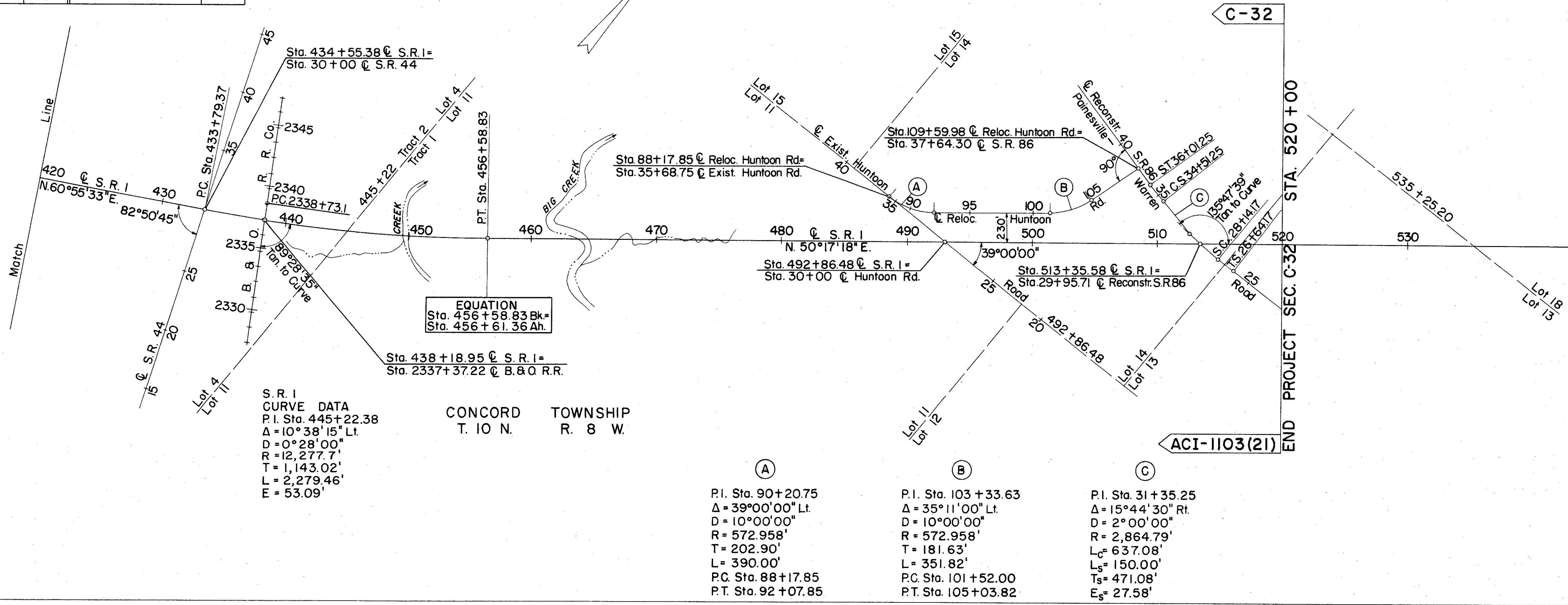
Signed _____ Right of Way Engineer, Interstate Projects

Date _____

Signed 
 Robert E. Smith P.E. No. 18042
 Partner - Capital Engineering Associates

Date July 18, 1958

Location and Limited Access approved and Journalized by the Director of Highways.
 Date September 10, 1957 Volume 402 Page 805
 in the Director of Highways Journal.



S. R. 1
 CURVE DATA
 P.I. Sta. 445+22.38
 $\Delta = 10^\circ 38' 15''$ Lt.
 $D = 0^\circ 28' 00''$
 $R = 12,277.7'$
 $T = 1,143.02'$
 $L = 2,279.46'$
 $E = 53.09'$

CONCORD TOWNSHIP
 T. 10 N. R. 8 W.

(A)
 P.I. Sta. 90+20.75
 $\Delta = 39^\circ 00' 00''$ Lt.
 $D = 10^\circ 00' 00''$
 $R = 572.958'$
 $T = 202.90'$
 $L = 390.00'$
 P.C. Sta. 88+17.85
 P.T. Sta. 92+07.85

(B)
 P.I. Sta. 103+33.63
 $\Delta = 35^\circ 11' 00''$ Lt.
 $D = 10^\circ 00' 00''$
 $R = 572.958'$
 $T = 181.63'$
 $L = 351.82'$
 P.C. Sta. 101+52.00
 P.T. Sta. 105+03.82

(C)
 P.I. Sta. 31+35.25
 $\Delta = 15^\circ 44' 30''$ Rt.
 $D = 2^\circ 00' 00''$
 $R = 2,864.79'$
 $L_c = 637.08'$
 $L_s = 150.00'$
 $T_s = 471.08'$
 $E_s = 27.58'$