

CENTERLINE PLAT

STATE OF OHIO-DEPARTMENT OF HIGHWAYS

LAK-1-4.02

KIRTLAND AND MENTOR TOWNSHIPS

VILLAGE OF WILLOUGHBY HILLS AND WAITE HILL VILLAGE

CITY OF WILLOUGHBY
LAKE COUNTY

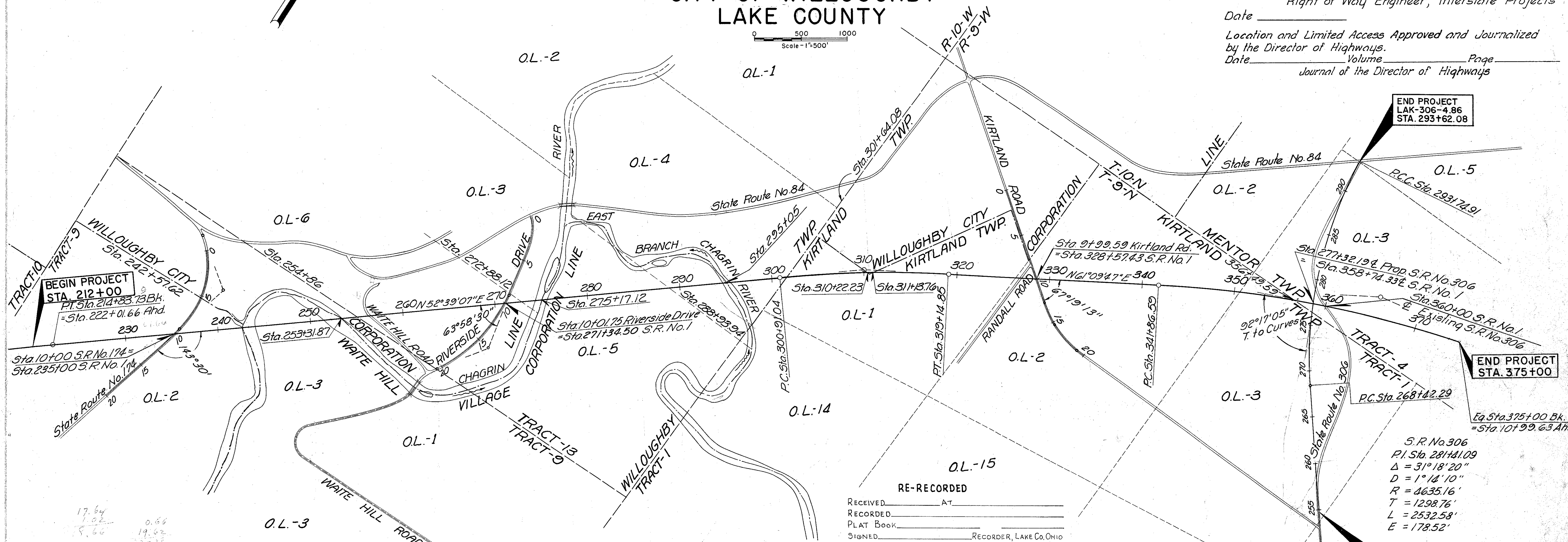
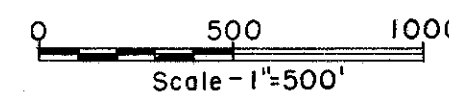
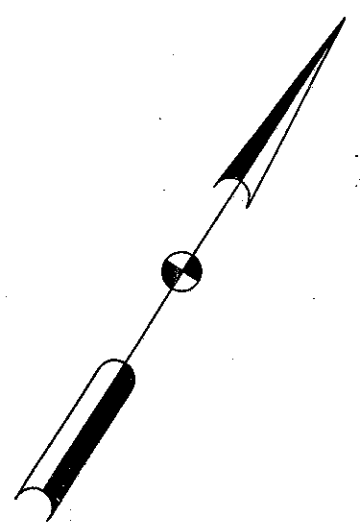
R/W
1 of 22

LAKE COUNTY, OHIO

Received _____ at _____
Recorded _____
Plat Book M Page B2
Signed _____ Recorder Lake County, Ohio
Fee _____

Signed _____
Right of Way Engineer, Interstate Projects

Date _____
Location and Limited Access Approved and Journalized
by the Director of Highways.
Date _____ Volume _____ Page _____
Journal of the Director of Highways



BEGIN PROJECT
STA. 212+00
PT. Sta. 214+83.73 Bk.
= Sta. 222+01.66 Ahd.

END PROJECT
LAK-306-4.86
STA. 293+62.08

END PROJECT
STA. 375+00

BEGIN PROJECT
LAK-306-4.86
STA. 254+75

RE-RECORDED

RECEIVED _____ AT _____
RECORDED _____
PLAT BOOK _____
SIGNED _____ RECORDER, LAKE CO. OHIO
FEE _____
SIGNED _____
DATE _____
RIGHT OF WAY ENGINEER-INTERSTATE PROJECTS

S.R. No. 1
P.I. Sta. 310+04.63
 $\Delta = 8^{\circ}30'40''$ Rt.
 $D = 0^{\circ}28'$
 $R = 12,277.67$
 $T = 913.59$
 $L = 1,823.81$
 $E = 33.94$

S.R. No. 1
P.I. Sta. 365+79.77
 $\Delta = 22^{\circ}03'35''$ Rt.
 $D = 0^{\circ}28'00''$
 $R = 12,277.67$
 $T = 2,393.18$
 $L = 4,727.08$
 $E = 231.06$
P.T. Sta. 25+13.30

STATE HIGHWAY NO. 1 CENTERLINE MONUMENTS

P.O.C. STA.	212+00
P.T. STA.	222+01.66
P.O.T. STA.	228+00
"	237+00
"	245+00
"	253+00
"	261+00
"	269+00
"	277+00
"	285+00
"	293+00
P.C. STA.	300+91.04
P.O.C. STA.	310+00
P.I. STA.	310+04.63
P.T. STA.	319+14.85
P.O.T. STA.	327+00
"	335+00
P.C. STA.	341+86.59
P.O.C. STA.	350+00
"	358+00
P.I. STA.	365+79.77
P.O.C. STA.	366+00
"	375+00

SIDE ROAD CENTERLINE MONUMENTS

KIRTLAND ROAD	P.T. STA.	7+41.92
"	T.S. STA.	12+73.63
"	P.I. STA.	14+40.50
"	S.G. STA.	15+23.63
STATE RTE. 306	P.O.T. STA.	25+47.5
"	"	261+00
"	P.C. STA.	268+42.29
"	P.O.C. STA.	275+00
"	P.I. STA.	281+41.09
"	P.O.C. STA.	284+00
"	P.C.C. STA.	293+74.91

S.R. No. 1
P.I. Sta. 209+80.52
 $\Delta = 1^{\circ}30'35''$ Lt.
 $D = 0^{\circ}09'$
 $R = 38,197.19'$
 $T = 503.27'$
 $L = 1006.48'$
 $E = 3.32'$
P.C. Sta. 204+77.25

DATE: 3-23-59

MICHAEL BAKER, JR., CONSULTING ENGINEERS
ROCHESTER, PENNSYLVANIA

STATE OF OHIO
DEPARTMENT OF HIGHWAYS
RIGHT OF WAY PLANS
STATE HIGHWAY NO. 1
C-44
CENTERLINE PLAT

Designed	Drawn	Traced	Checked	Reviewed	Date	Revised
R.G.	K.A. R.B.P.	K.A.	B.P.			