

5

CENTERLINE PLAT

STATE OF OHIO-DEPARTMENT OF HIGHWAYS

LAK-1-2.16

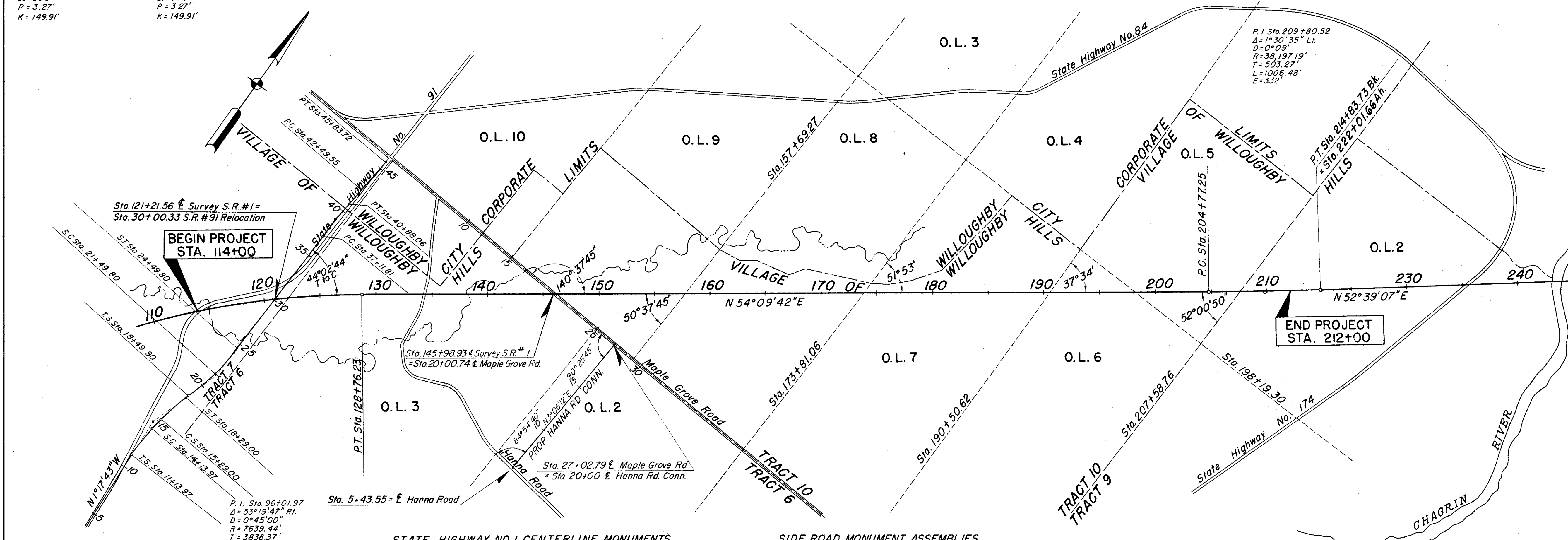
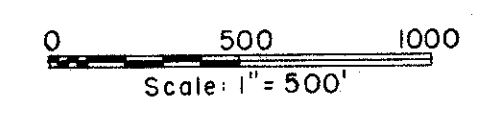
VILLAGE OF WILLOUGHBY HILLS & CITY OF WILLOUGHBY LAKE COUNTY

297
312

RECEIVED _____ AT _____
 RECORDED 5-4-1959
 PLAT BOOK VOL. M PAGE 81
 SIGNED _____ RECORDER-LAKE CO. OHIO
 FEE _____
 SIGNED _____
 RIGHT OF WAY ENGINEER, INTERSTATE PROJECTS
 DATE _____
 LOCATION AND LIMITED ACCESS APPROVED AND JOURNALIZED
 BY THE DIRECTOR OF HIGHWAYS
 DATE _____ VOLUME _____ PAGE _____
 JOURNAL OF THE DIRECTOR OF HIGHWAYS

CURVE DATA S.R. # 91 RELOCATION

P.I. Sta. 14+74.29 Δ = 20°45'05" Rt D = 5°00' Rc = 1145.92' Ts = 360.32' Lc = 115.03' Es = 22.37' Os = 7°30' Ls = 300' P = 3.27' K = 149.91'	P.I. Sta. 21+51.00 Δ = 15°00'00" Lt D = 5°00' Rc = 1145.92' Ts = 301.20' Lc = 0.00' Es = 13.19' Os = 7°30' Ls = 300' P = 3.27' K = 149.91'	P.I. Sta. 39+00.00 Δ = 3°45'45" Rt D = 1°00' Rc = 5729.58' Ts = 188.19' Lc = 376.25' Es = 3.09'	P.I. Sta. 44+16.69 Δ = 3°20'30" Lt D = 1°00' Rc = 5729.58' Ts = 167.13' Lc = 334.17' Es = 2.44'
--	--	---	---



P.I. Sta. 14+74.29
 Δ = 20°45'05" Rt
 D = 5°00'
 Rc = 1145.92'
 Ts = 360.32'
 Lc = 115.03'
 Es = 22.37'
 Os = 7°30'
 Ls = 300'
 P = 3.27'
 K = 149.91'

P.I. Sta. 209+80.52
 Δ = 1°30'35" Lt
 D = 0°09'
 R = 38,197.19'
 T = 503.27'
 L = 1006.48'
 E = 332'

STATE HIGHWAY NO. 91 CENTERLINE MONUMENTS

- P.O.C. STA. 114+00
- P.O.C. STA. 120+75
- P.T. STA. 128+76.23
- P.O.T. STA. 137+00
- P.O.T. STA. 145+00
- P.O.T. STA. 153+00
- P.O.T. STA. 161+00
- P.O.T. STA. 169+00
- P.O.T. STA. 178+00
- P.O.T. STA. 187+00
- P.O.T. STA. 196+00
- P.C. STA. 204+77.25
- P.I. STA. 209+80.52

SIDE ROAD MONUMENT ASSEMBLIES

- | | |
|--------------------|----------------------|
| STATE ROUTE NO. 91 | P.O.T. STA. 7+50 |
| " " " | T.S. STA. 11+13.97 |
| " " " | P.I. STA. 14+74.29 |
| " " " | S.T. STA. 18+29.00 |
| " " " | T.S. STA. 18+49.80 |
| " " " | P.I. STA. 21+51.00 |
| " " " | S.T. STA. 24+49.80 |
| " " " | P.C. STA. 37+11.81 |
| " " " | P.I. STA. 39+00.00 |
| " " " | P.T. STA. 40+88.06 |
| " " " | P.C. STA. 42+49.55 |
| " " " | P.L. STA. 44+16.69 |
| " " " | P.T. STA. 45+83.72 |
| HANNA ROAD CONN. | P.O.T. STA. 5+43.55 |
| MAPLE GROVE ROAD | P.O.T. STA. 9+75 |
| " " " | P.O.T. STA. 27+02.79 |

MICHAEL BAKER JR, CONSULTING ENGINEERS ROCHESTER, PENNSYLVANIA					
DATE: 3-25-59					
STATE OF OHIO DEPARTMENT OF HIGHWAYS RIGHT OF WAY PLANS STATE HIGHWAY NO. 1 C-43 CENTERLINE PLAT					
Designed	Drawn	Traced	Checked	Reviewed Date	Revised
B.P.	A.L.G.	L.E.W.	REF.		