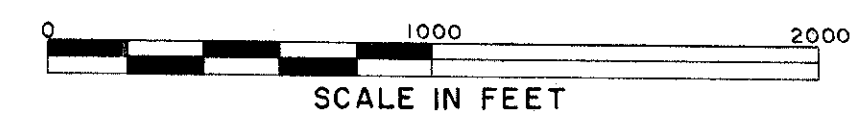
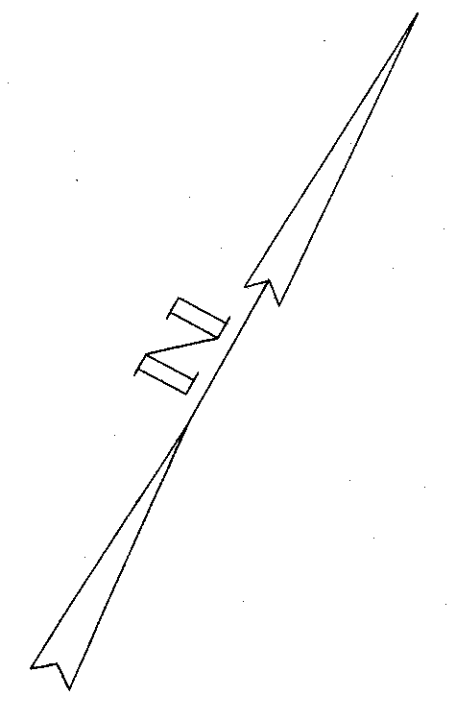


5

LOCATION PLAN

LAK-1-22.60

PERRY & MADISON TOWNSHIPS & VILLAGE OF MADISON LAKE COUNTY



Received _____ Time _____
 Recorded _____
 Plat Book M Pages 47 and 47-1
 Signed _____ Recorder, Lake County, Ohio
 Fee _____ Paid _____

267
280

1
14

Signed _____
 Right-of-Way Engineer, Interstate Projects.

Date _____

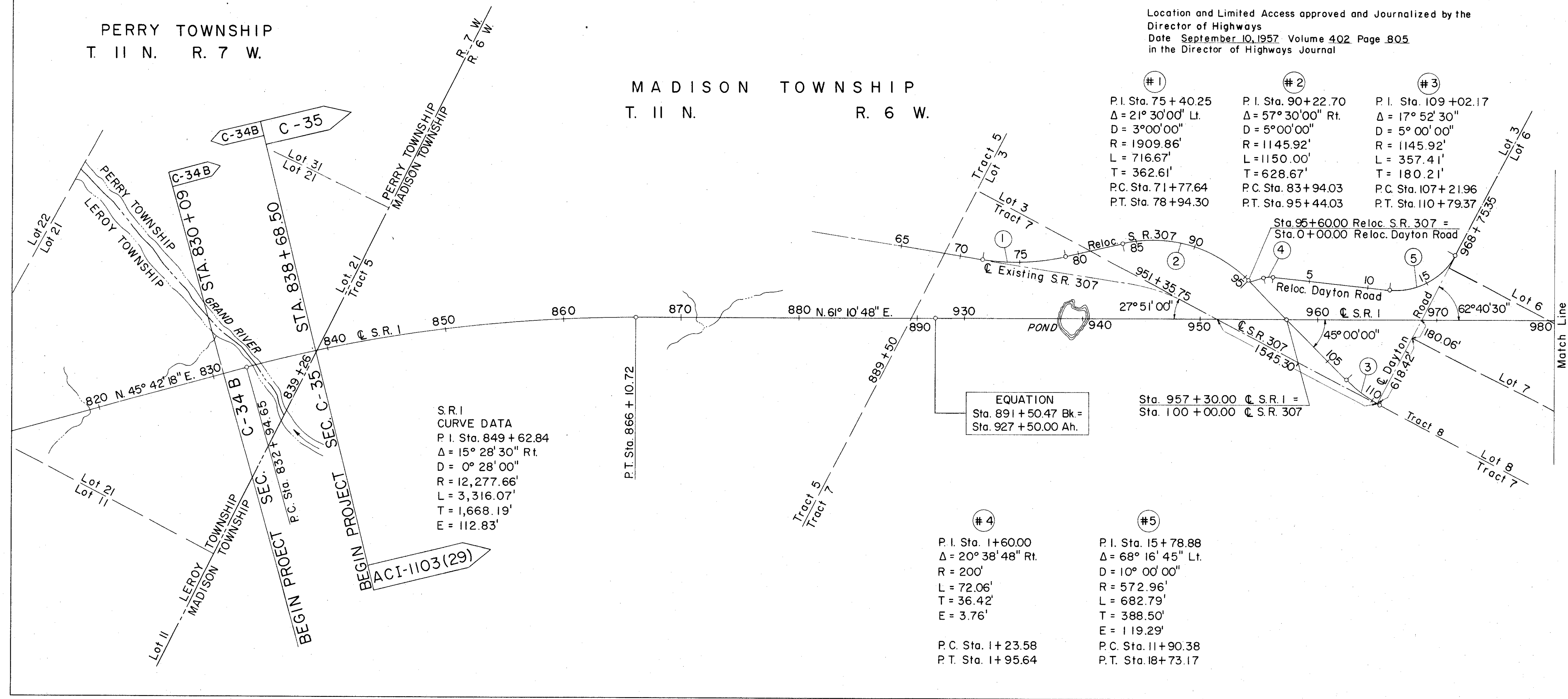
Signed _____
 Robert E. Smith P.E. No. 18042
 Partner - Capitol Engineering Associates

Date _____

Location and Limited Access approved and Journalized by the
 Director of Highways
 Date September 10, 1957 Volume 402 Page 805
 in the Director of Highways Journal

PERRY TOWNSHIP
T. 11 N. R. 7 W.

MADISON TOWNSHIP
T. 11 N. R. 6 W.



S.R. 1
 CURVE DATA
 P.I. Sta. 849+62.84
 $\Delta = 15^\circ 28' 30''$ Rt.
 $D = 0^\circ 28' 00''$
 $R = 12,277.66'$
 $L = 3,316.07'$
 $T = 1,668.19'$
 $E = 112.83'$

EQUATION
 Sta. 891+50.47 Bk =
 Sta. 927+50.00 Ah.

#1	#2	#3
P.I. Sta. 75+40.25	P.I. Sta. 90+22.70	P.I. Sta. 109+02.17
$\Delta = 21^\circ 30' 00''$ Lt.	$\Delta = 57^\circ 30' 00''$ Rt.	$\Delta = 17^\circ 52' 30''$
$D = 3^\circ 00' 00''$	$D = 5^\circ 00' 00''$	$D = 5^\circ 00' 00''$
$R = 1909.86'$	$R = 1145.92'$	$R = 1145.92'$
$L = 716.67'$	$L = 1150.00'$	$L = 357.41'$
$T = 362.61'$	$T = 628.67'$	$T = 180.21'$
P.C. Sta. 71+77.64	P.C. Sta. 83+94.03	P.C. Sta. 107+21.96
P.T. Sta. 78+94.30	P.T. Sta. 95+44.03	P.T. Sta. 110+79.37

#4
 P.I. Sta. 1+60.00
 $\Delta = 20^\circ 38' 48''$ Rt.
 $R = 200'$
 $L = 72.06'$
 $T = 36.42'$
 $E = 3.76'$
 P.C. Sta. 1+23.58
 P.T. Sta. 1+95.64

#5
 P.I. Sta. 15+78.88
 $\Delta = 68^\circ 16' 45''$ Lt.
 $D = 10^\circ 00' 00''$
 $R = 572.96'$
 $L = 682.79'$
 $T = 388.50'$
 $E = 119.29'$
 P.C. Sta. 11+90.38
 P.T. Sta. 18+73.17