

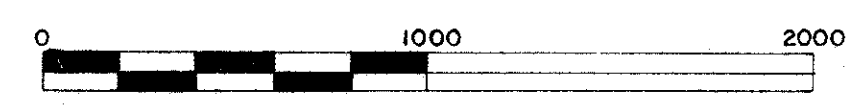
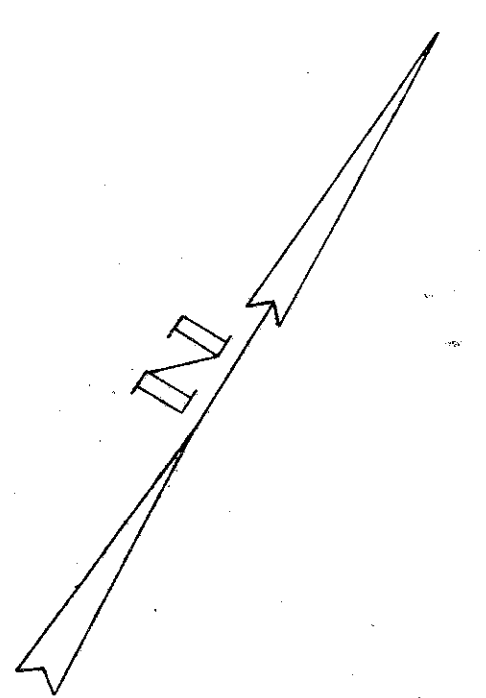
LOCATION PLAN

LAK-1-10.38

KIRTLAND HILLS VILLAGE

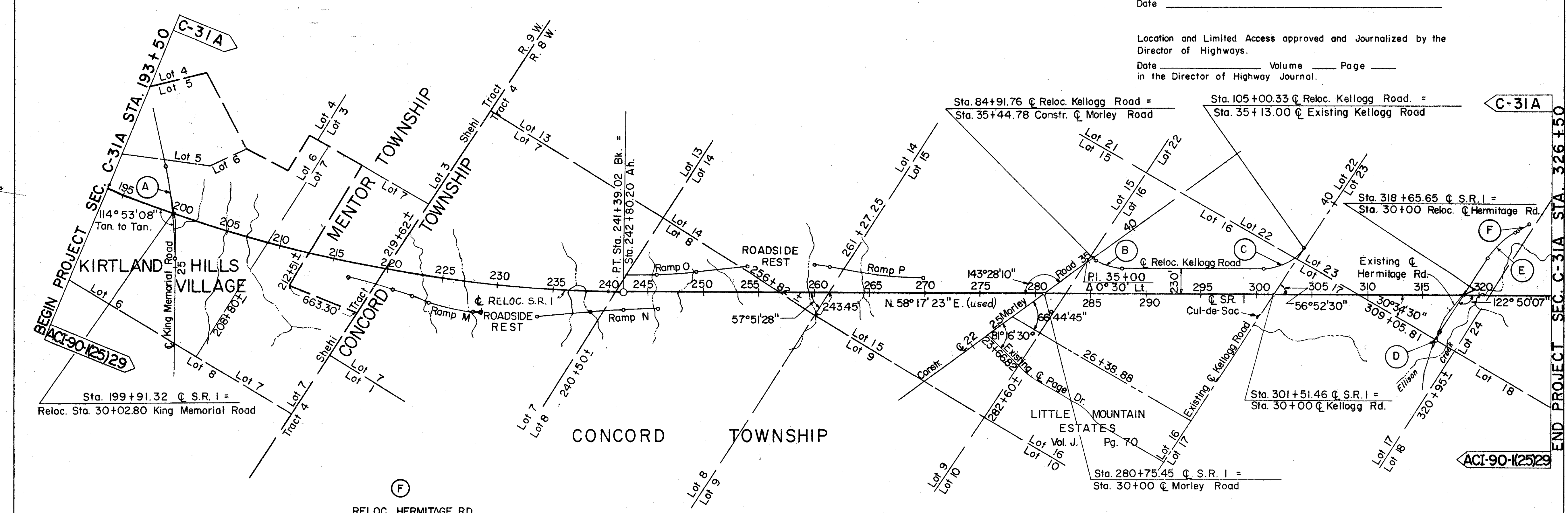
MENTOR TOWNSHIP—CONCORD TOWNSHIP

LAKE COUNTY



Received _____ Time _____
 Recorded _____
 Plat Book N Page 17
 Signed _____ Recorded Lake County, Ohio
 Fee _____ Paid _____
 Signed _____ Division Engineer, _____
 Date _____
 Signed _____ Robert E. Smith P.E. No. 18042
 Partner Capitol Engineering Associates
 Date _____

Location and Limited Access approved and Journalized by the Director of Highways.
 Date _____ Volume _____ Page _____
 in the Director of Highway Journal.



STATION	Q	STATION	Q
193+50	P.O.C.	271+00	P.O.T.
202+00		281+00	
212+00		291+00	
222+00		301+00	
232+00		311+00	
241+39.02 Bk. = 242+80.20 A.H.	P.T.	321+00	
251+00			
261+00			

RELOC. HERMITAGE RD.
 CURVE DATA
 P.I. Sta. 38+49.33
 $\Delta = 10^{\circ}00'00''$ Lt.
 $D = 8^{\circ}00'00''$
 $R = 716.20'$
 $T = 62.66'$
 $L = 125.00'$
 P.C. Sta. 37+86.67
 P.T. Sta. 39+11.67
 CHD. = 124.84'

S.R. 1
 CURVE DATA
 P.I. Sta. 206+88.93
 $\Delta = 33^{\circ}09'30''$ Lt.
 $D = 0^{\circ}28'00''$
 $R = 12,277.66'$
 $T = 3655.27'$
 $L = 7105.36'$
 $E = 532.51'$
 CHD. = 7006.62' N 74°53'08"E

STA.	P.T.
87+87.67	P.T.
100+62.83	P.C.

RELOC. KING MEMORIAL RD.
 CURVE DATA
 P.I. Sta. 30+19.43
 $\Delta = 12^{\circ}52'30''$ Lt.
 $D = 1^{\circ}30'00''$
 $R = 3819.72'$
 $T = 430.98'$
 $L = 858.33'$
 $E = 24.23'$
 P.C. Sta. 25+88.45
 P.T. Sta. 34+46.78
 CHD. = 856.53'

RELOC. KELLOGG RD.
 CURVE DATA
 P.I. Sta. 86+62.73
 $\Delta = 33^{\circ}28'10''$ Lt.
 $D = 13^{\circ}00'00''$
 $R = 440.74'$
 $T = 132.52'$
 $L = 257.46'$
 P.C. Sta. 85+30.21
 P.T. Sta. 87+87.67
 CHD. = 253.81'

RELOC. KELLOGG RD.
 CURVE DATA
 P.I. Sta. 103+01.51
 $\Delta = 56^{\circ}52'30''$ Lt.
 $D = 13^{\circ}00'00''$
 $R = 440.74'$
 $T = 238.68'$
 $L = 437.50'$
 P.C. Sta. 100+62.83
 P.T. Sta. 105+00.33
 CHD. = 419.76'

RELOC. HERMITAGE RD.
 CURVE DATA
 P.I. Sta. 25+60.05
 $\Delta = 10^{\circ}44'26''$
 $D = 12^{\circ}00'00''$
 $R = 477.47'$
 $T = 44.88'$
 $L = 89.51'$
 P.C. Sta. 25+15.17
 P.T. Sta. 26+04.68
 CHD. = 89.38'

RELOC. HERMITAGE RD.
 CURVE DATA
 P.I. Sta. 35+95
 $\Delta = 28^{\circ}40'00''$
 $D = 8^{\circ}00'00''$
 $R = 716.20'$
 $T = 183.00'$
 $L = 358.33'$
 P.C. Sta. 34+12.00
 P.T. Sta. 37+70.73
 CHD. = 354.61'