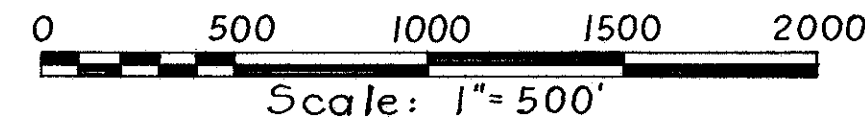


LOCATION PLAN

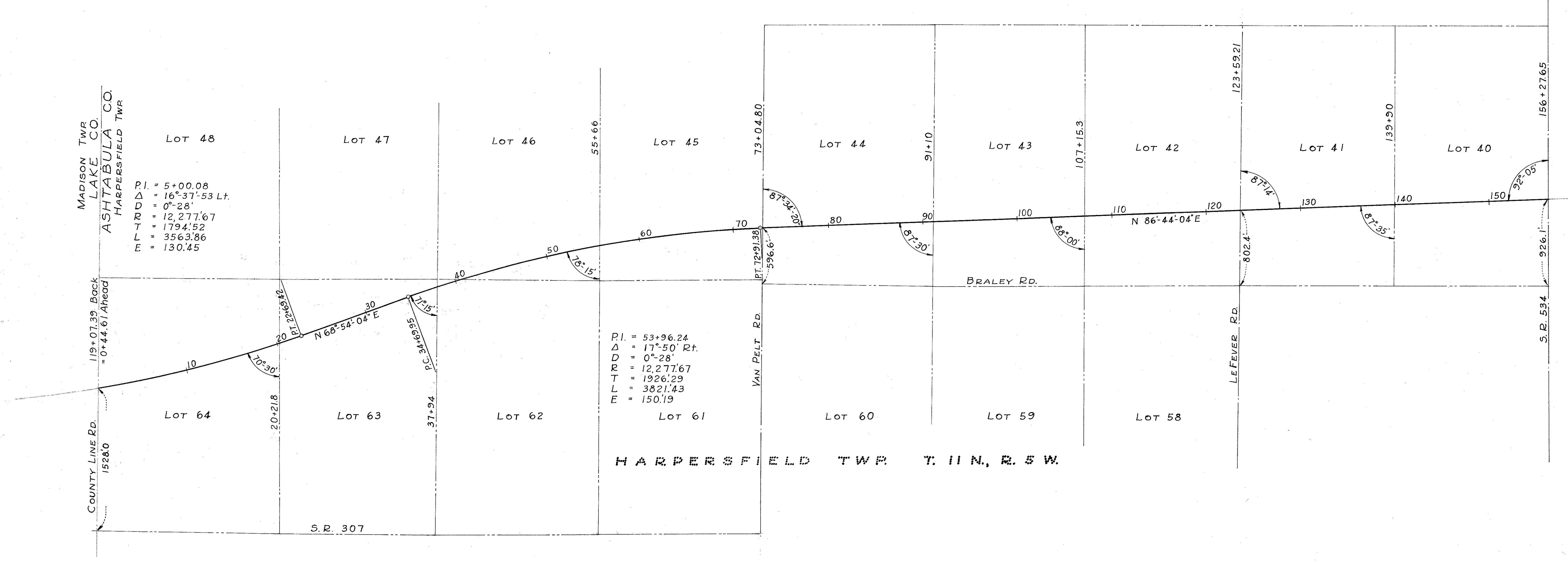
S. R. 1 LAK 1 -26.51
S. R. 1 ATB 1 -0.00
ASHTABULA COUNTY



LIMITED ACCESS

Received _____ at _____
 Recorded _____
 Plat Book _____ Page _____
 Signed _____ Recorder, Ashtabula County, Ohio
 Fee _____

Signed John Bussen
 Right of Way Engineer - Interstate Projects.
 Date 9/18/57 Registered Surveyor No. 104
 Signed Valden J. Farbaun
 Charles L. Barber & Assoc. Engrs. & Architects
 Date 9-10-57 Registered Surveyor No. 4262



HARPERSFIELD TWP T. 11 N., R. 5 W.

Centerline reference monuments are to be set at the locations shown after completion of construction.

CENTERLINE REFERENCE MONUMENTS

STA. 105+00	STA. 115+00	STA. 125+00	STA. 135+00													
STA. 5+00	STA. 15+00	P.T. STA. 22+69.42	STA. 28+00	P.C. STA. 34+69.95	STA. 44+00	STA. 54+00	STA. 60+00	STA. 65+00	P.T. STA. 72+91.38	STA. 80+00	STA. 90+00	STA. 99+00				