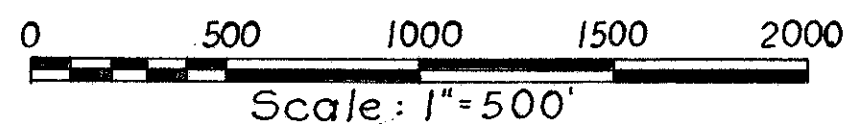


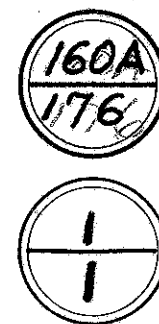
# LOCATION PLAN

S.R. 1                      LAK 1 -26.51  
S.R. 1                      ATB 1 -0.00  
LAKE COUNTY

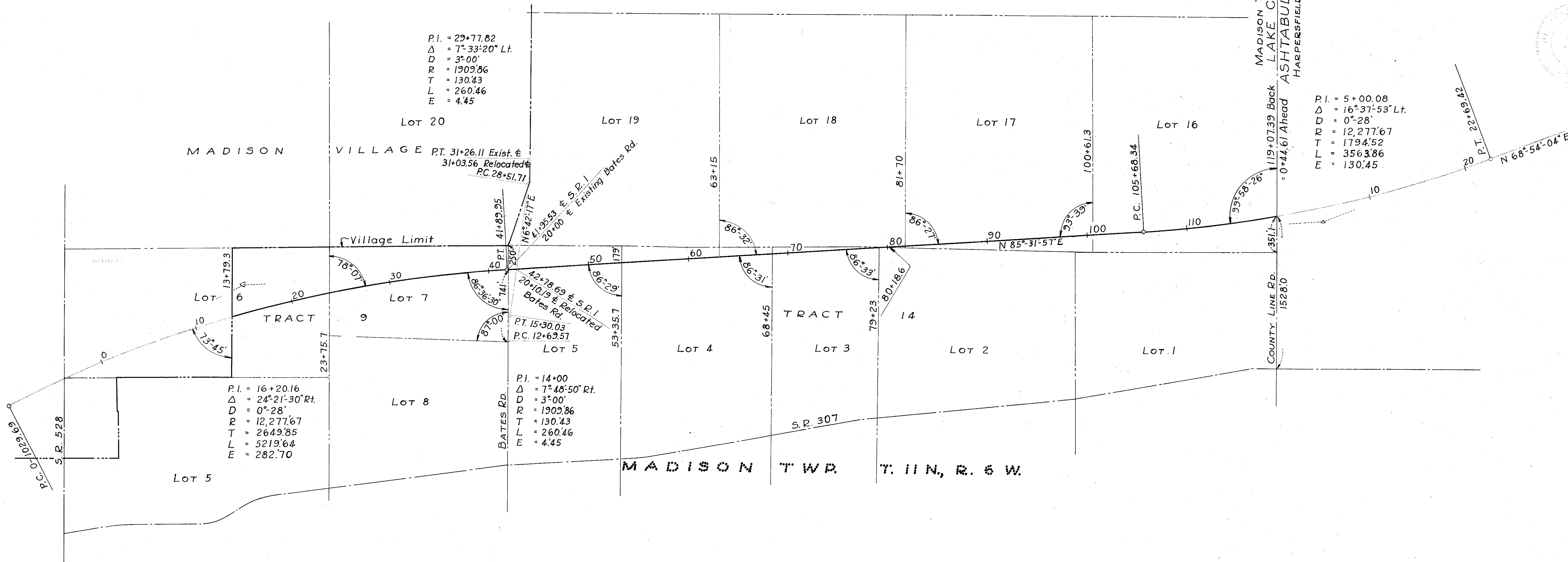


## LIMITED ACCESS

Received \_\_\_\_\_ at \_\_\_\_\_  
 Recorded \_\_\_\_\_  
 Plat Book \_\_\_\_\_ Page \_\_\_\_\_  
 Signed \_\_\_\_\_ Recorder, Lake County, Ohio  
 Fee \_\_\_\_\_



Signed John Buswell  
*Right of Way Engineer - Interstate Projects*  
 Date 9/13/57 Registered Surveyor No. 104  
 Signed Valdem J. Jarman  
*Charles L. Barber & Assoc. Engrs. & Architects*  
 Date 9-10-57 Registered Surveyor No. 4262



Centerline reference monuments are to be set at the locations shown after completion of construction.

### CENTERLINE REFERENCE MONUMENTS

 STA. 115+00		 STA. 14+00	 STA. 20+00	 STA. 26+00	 STA. 34+00	 P.T. STA. 41+89.95	 STA. 50+00	 STA. 60+00	 STA. 70+00	 STA. 80+00	 STA. 90+00	 STA. 100+00	 P.C. STA. 105+68.34
-----------------	--	----------------	----------------	----------------	----------------	------------------------	----------------	----------------	----------------	----------------	----------------	-----------------	-------------------------