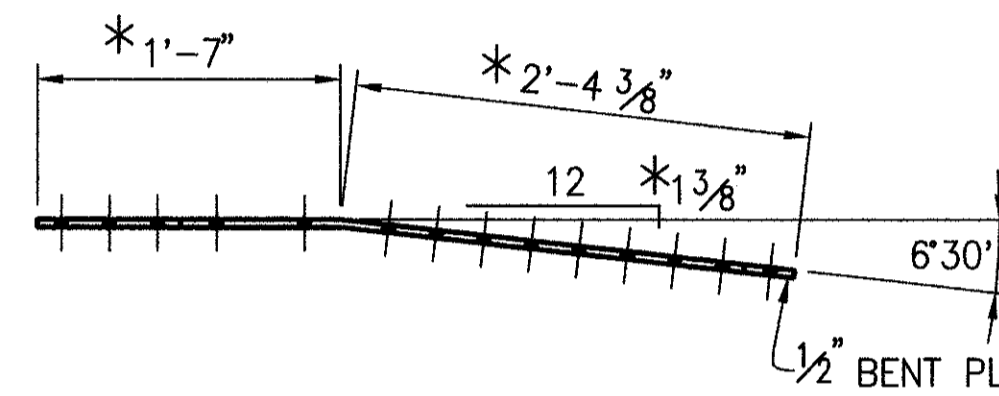
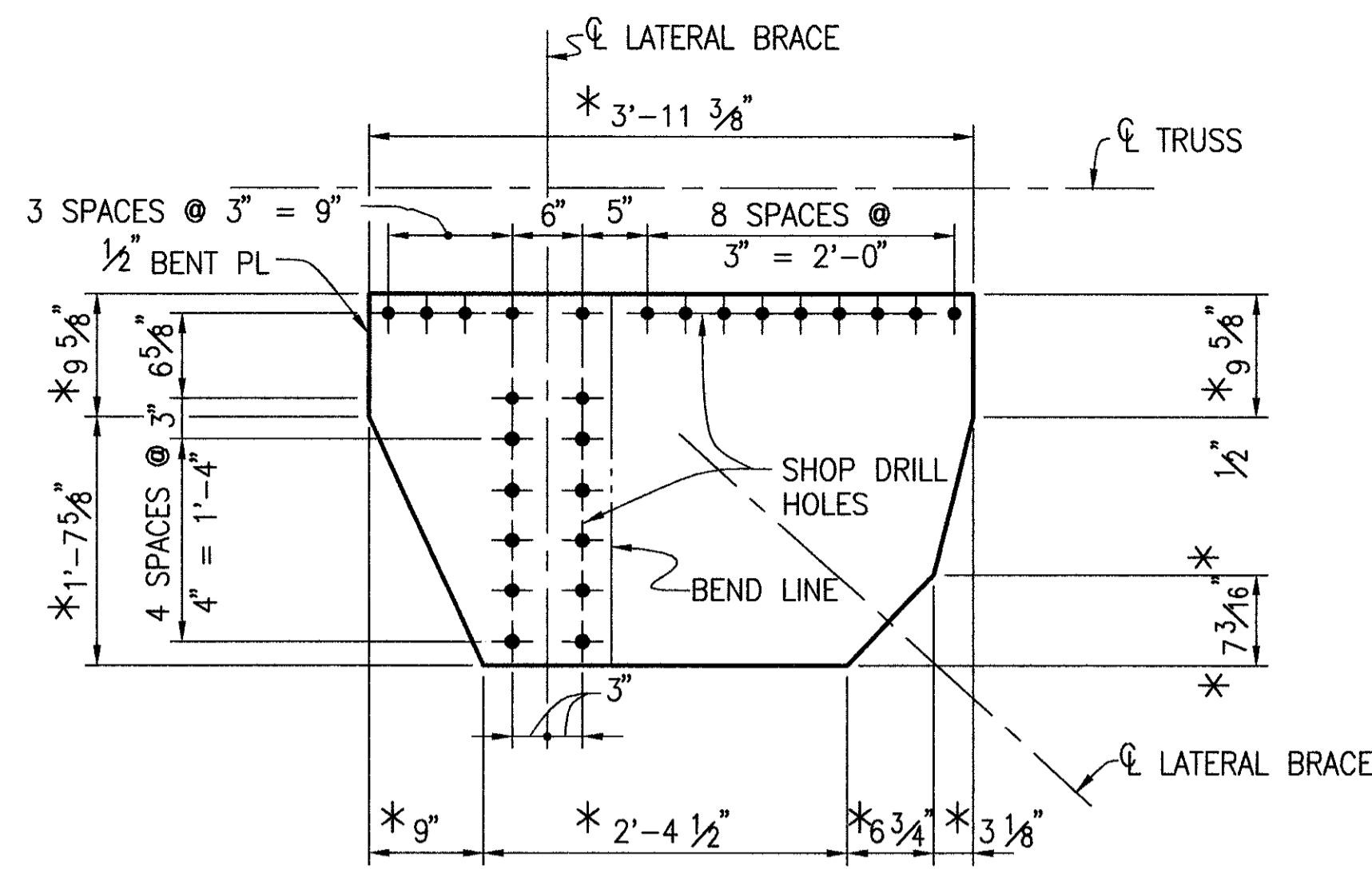
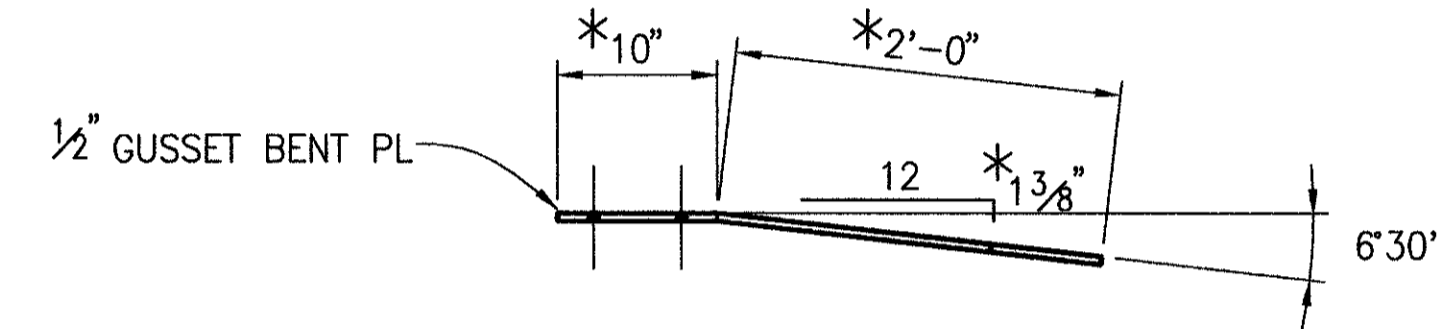
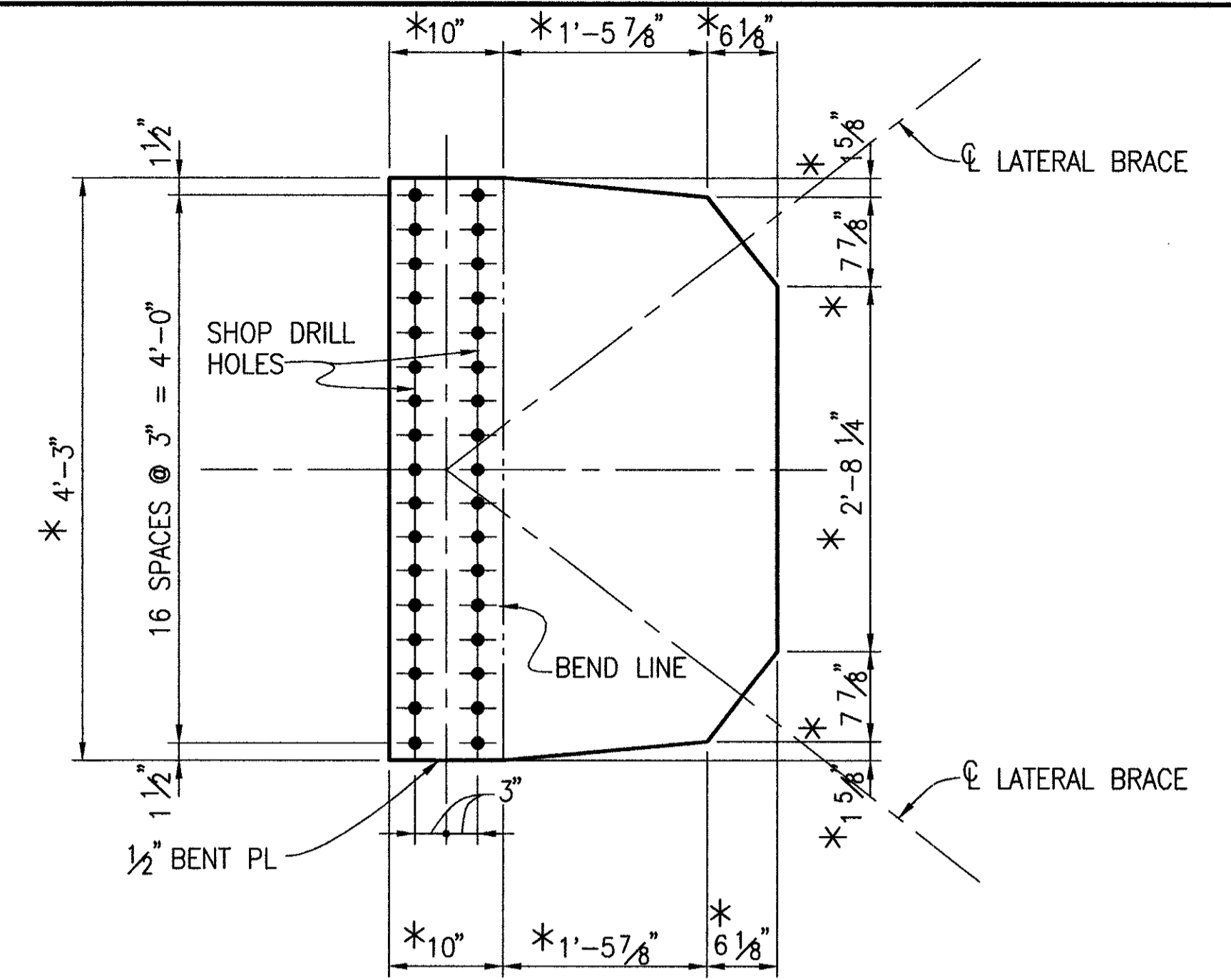


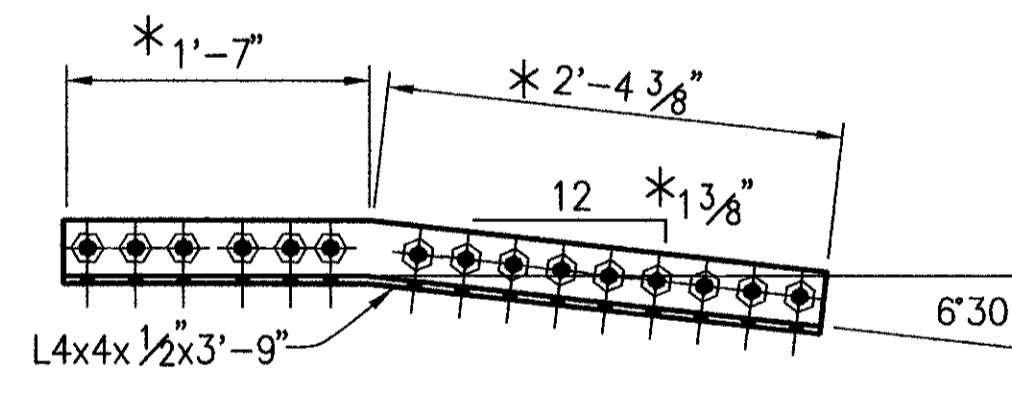
**TOP END GUSSET BENT PLATE**  
(1 REQUIRED AS SHOWN)  
(1 REQUIRED OPPOSITE HAND)



**BOTTOM END GUSSET BENT PLATE**  
(1 REQUIRED AS SHOWN)  
(1 REQUIRED OPPOSITE HAND)

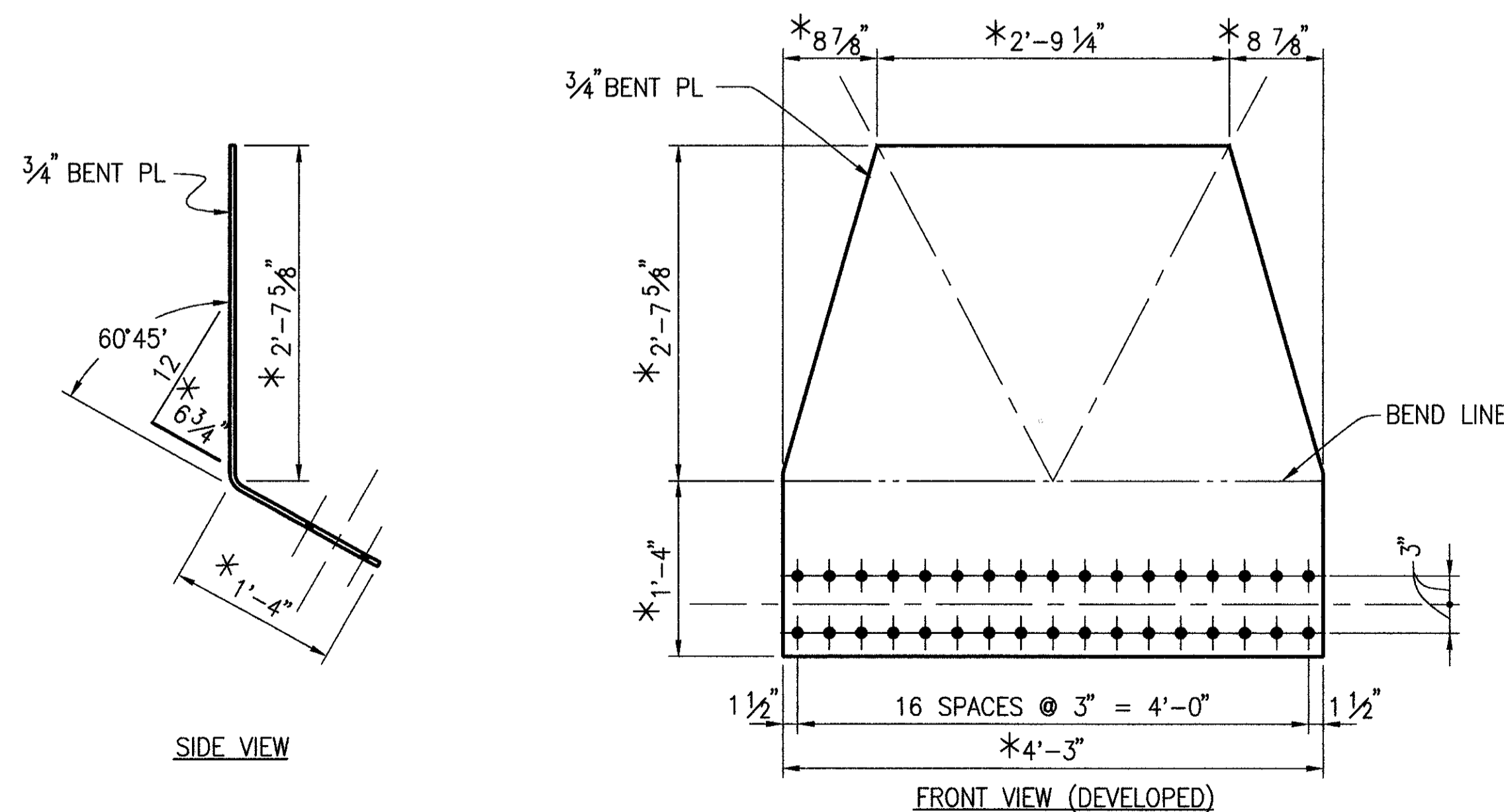


**CENTER GUSSET BENT PLATE**  
(2 REQUIRED)

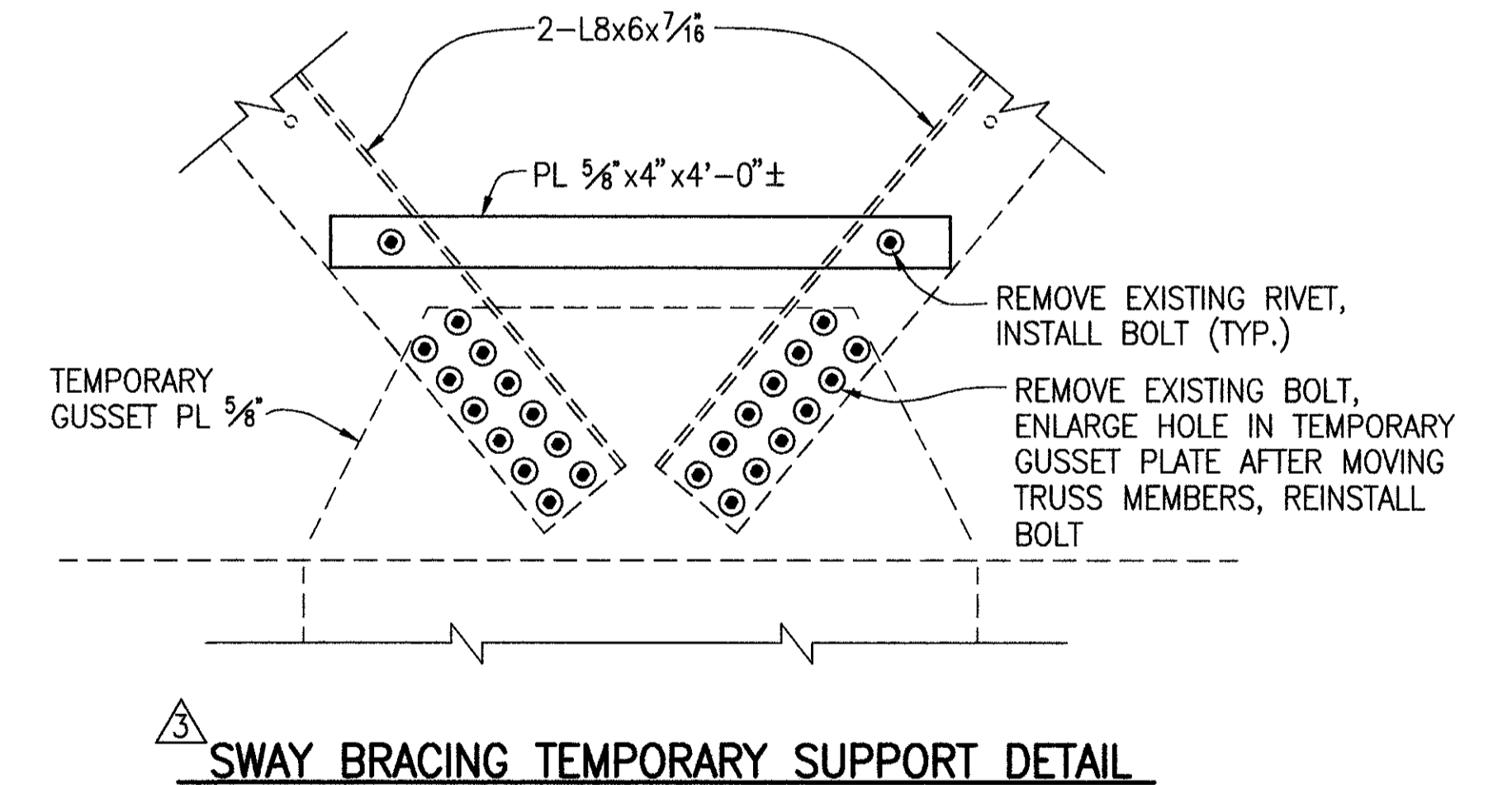


**BENT L4x4x1/2 x 3'-11 3/8**  
(1 REQUIRED AS SHOWN)  
(1 REQUIRED OPPOSITE HAND)

\* - VERIFY DIMENSIONS IN FIELD PRIOR TO CUTTING AND BENDING MATERIAL.



**SWAY BRACING GUSSET BENT PLATE**  
(1 REQUIRED)



**SWAY BRACING TEMPORARY SUPPORT DETAIL**

**NOTES**

- MATERIALS ARE NEW UNLESS OTHERWISE NOTED
- BENDS IN PLATES SHALL BE HOT FORMED OR COLD FORMED.
- ADDITIONAL NOTES SEE SHEET NO. 17