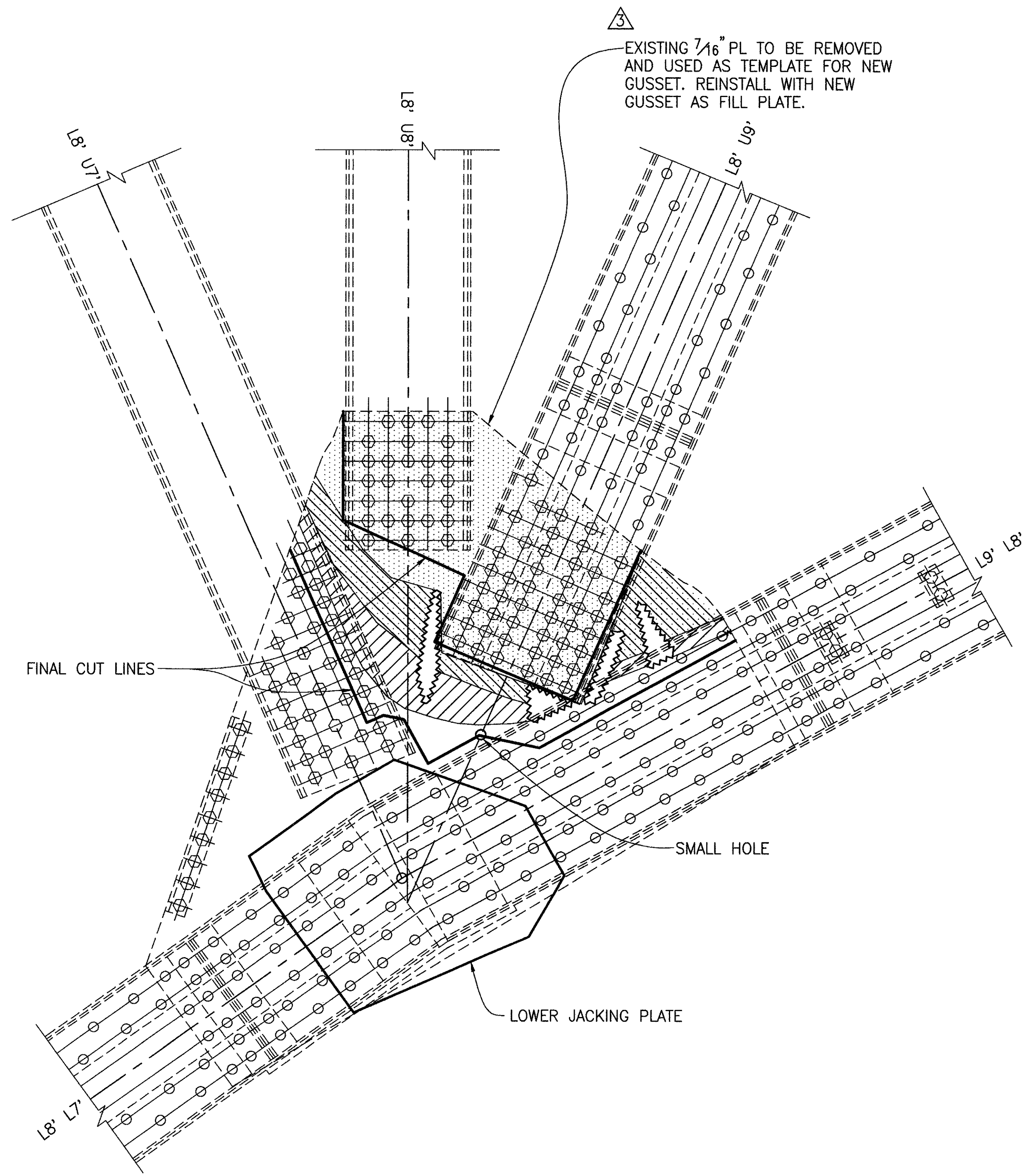


NORTH TRUSS-INTERIOR GUSSET (L8')
(DAMAGED)

LEGEND

- TEARS IN STEEL
- PUSHED OUT
- PUSHED IN
- BUCKLED OUT
- BUCKLED IN



NORTH TRUSS-EXTERIOR GUSSET (L8')
(DAMAGED)

NOTES:

REMOVAL OF DAMAGED GUSSET PLATES: CUT LINES SHOWN ARE FINAL CUTS. INITIAL CUTS TO FREE MEMBERS SHALL BE MADE ANYWHERE BETWEEN THE FINAL CUTS IN THE DAMAGED AREA. CUTS THROUGH MATERIAL WITH NO BACKING MATERIAL SHALL BE MADE BY CUTTING TORCH OR SAWING. CUTS THROUGH MATERIAL AGAINST EXISTING STEEL TO REMAIN IN PLACE SHALL BE MADE BY SAWING OR AIR-ARC CUTTER. ~~WITH A COPPER METAL SHEET BETWEEN MEMBERS.~~

		RICHLAND ENGINEERING LIMITED 29 NORTH PARK STREET MANSFIELD, OHIO 44902	
DESIGNED	ML/DAP	DATE	7/10/96
CHECKED	RWR	REVIEWED	DLR
		STRUCTURE FILE NO.	4-304985
		REVISION	2/20/97
GUSSET REMOVAL DETAILS - 1 BRIDGE NO. LAK-90-2342 R OVER THE GRAND RIVER			
LAK-90-23.42 L&R			
14 19			