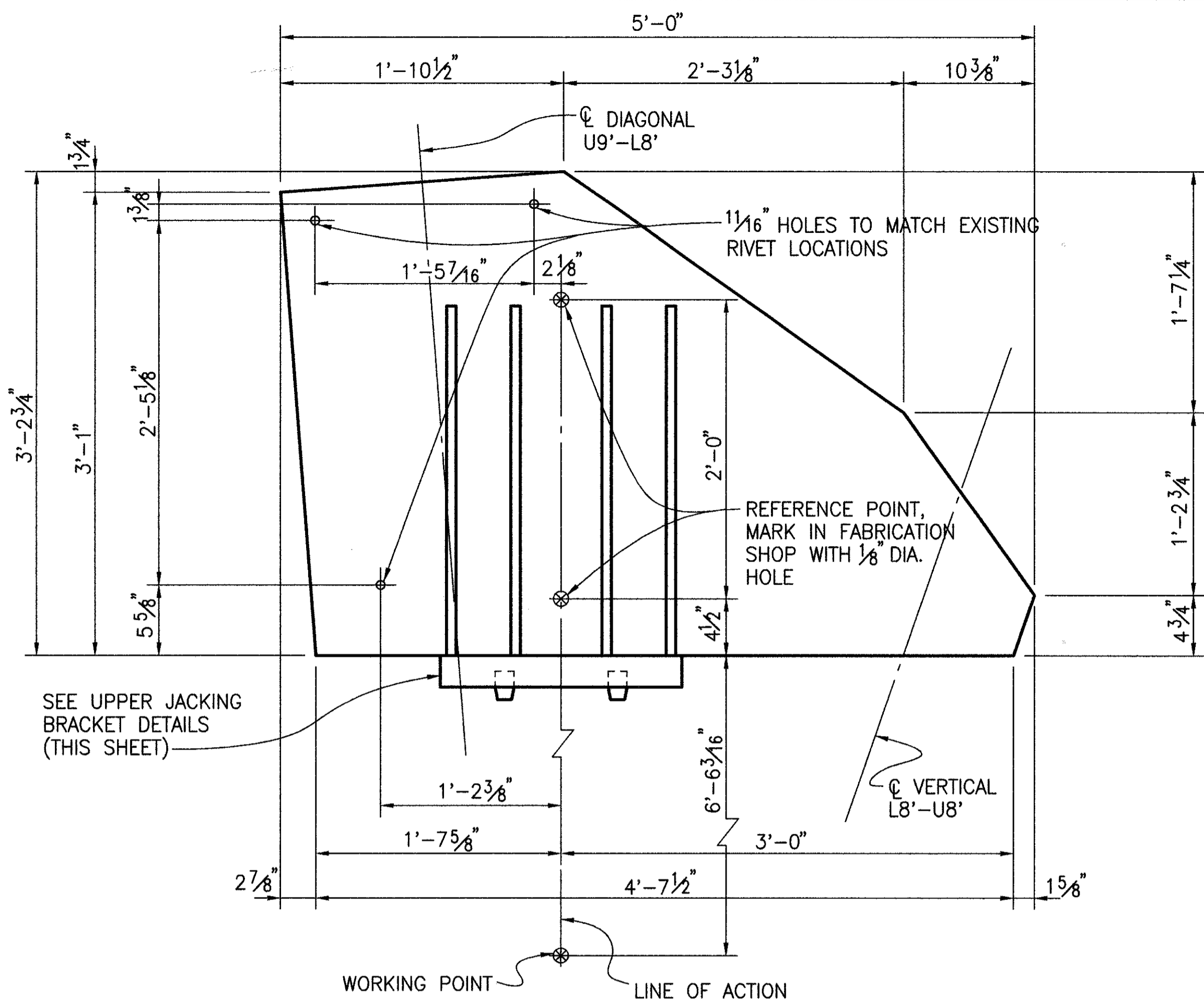
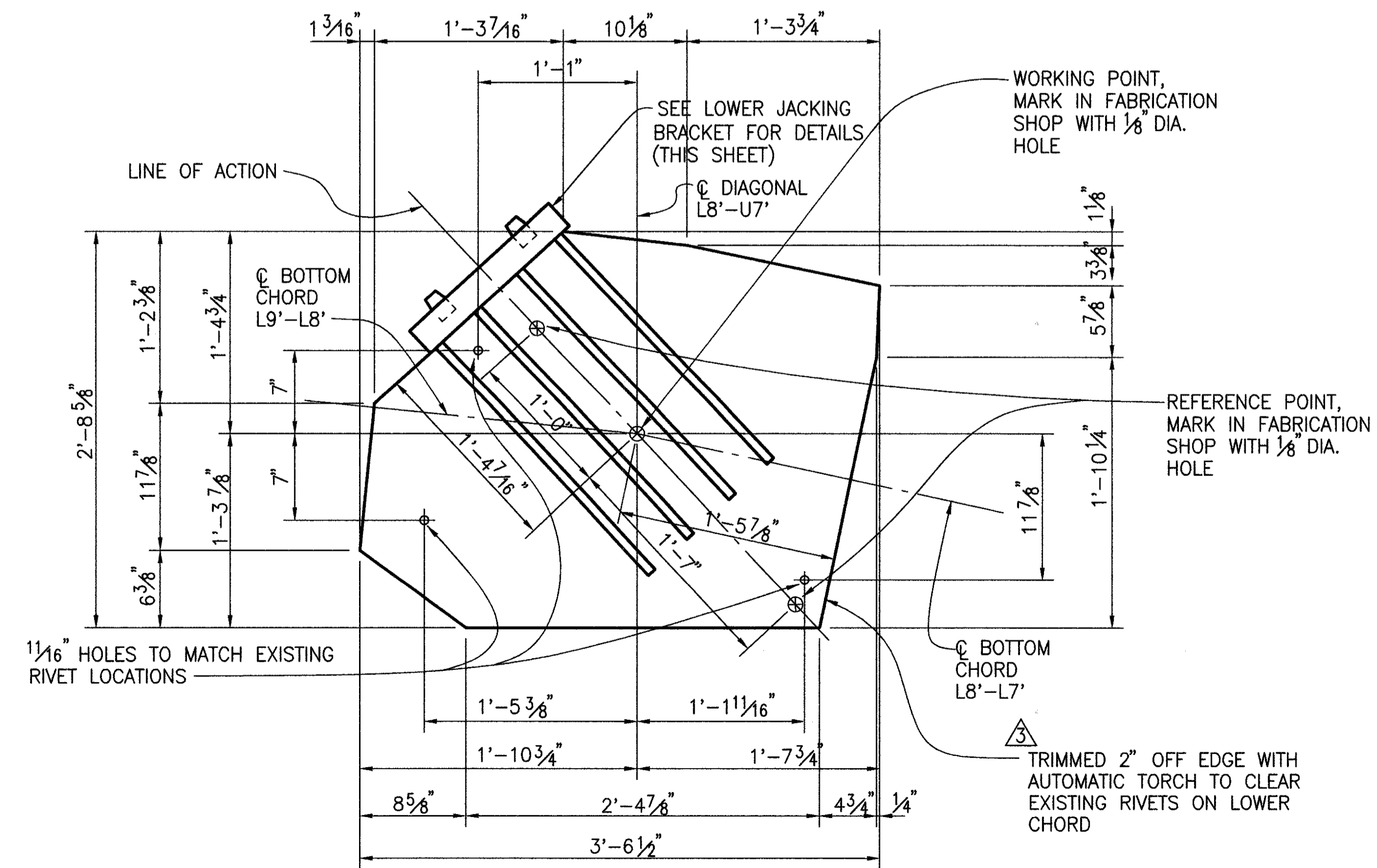


Job No. 9607301 Date 3/12/97 Drawn By RB,LLS,JPS



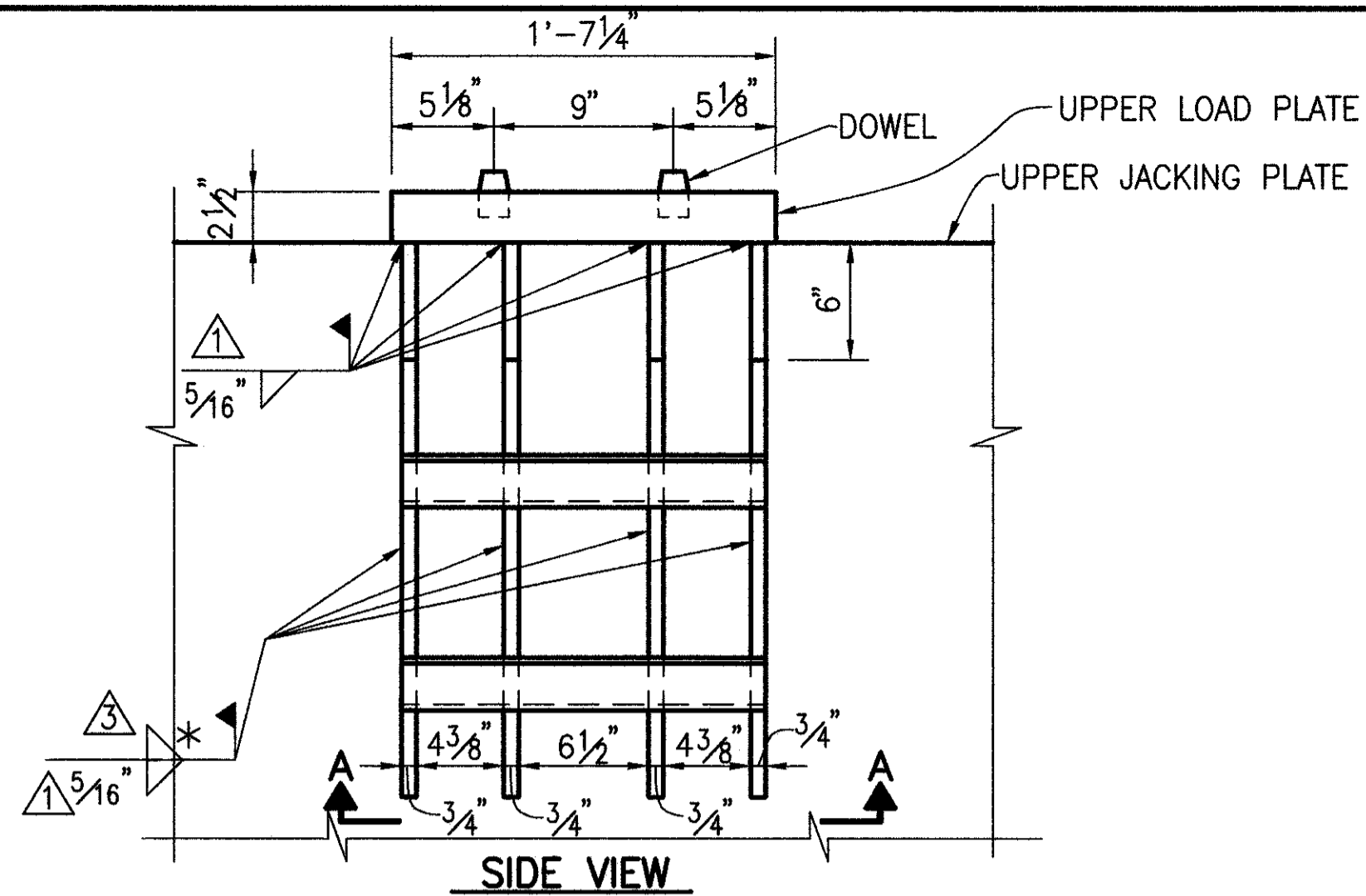
**UPPER JACKING PLATE**

(TWO REQUIRED AS SHOWN, TWO REQUIRED OPPOSITE HAND)

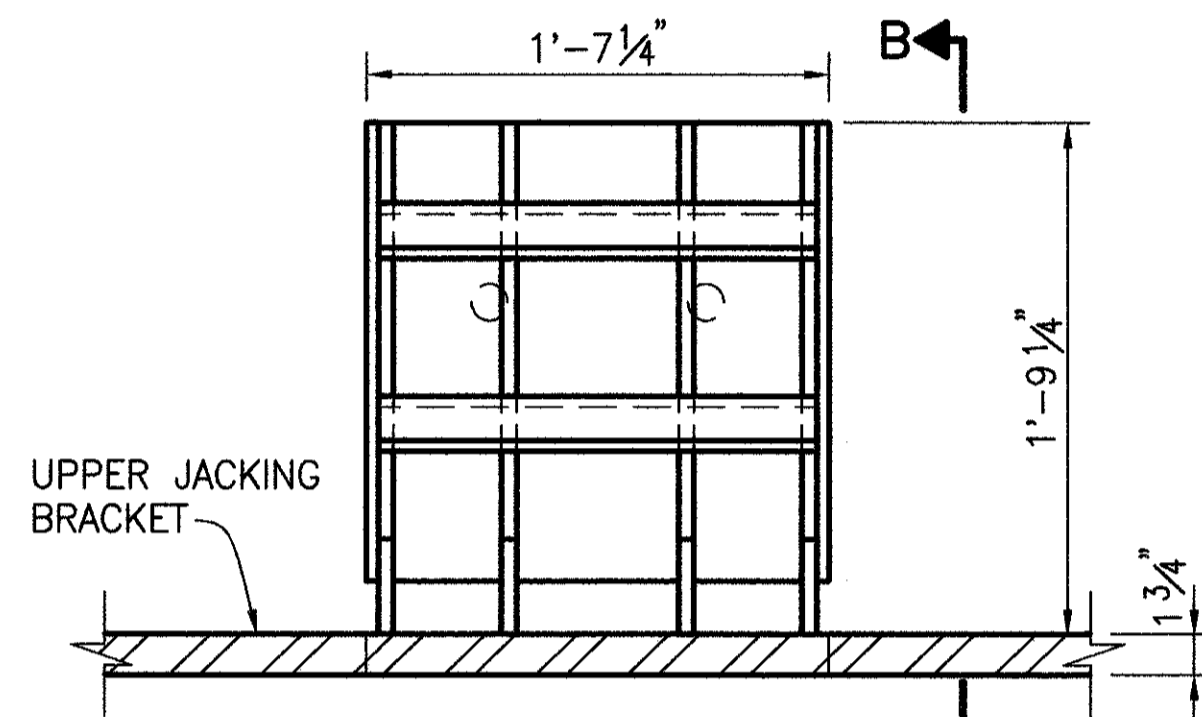


**LOWER JACKING PLATE**

(TWO REQUIRED AS SHOWN, TWO REQUIRED OPPOSITE HAND)

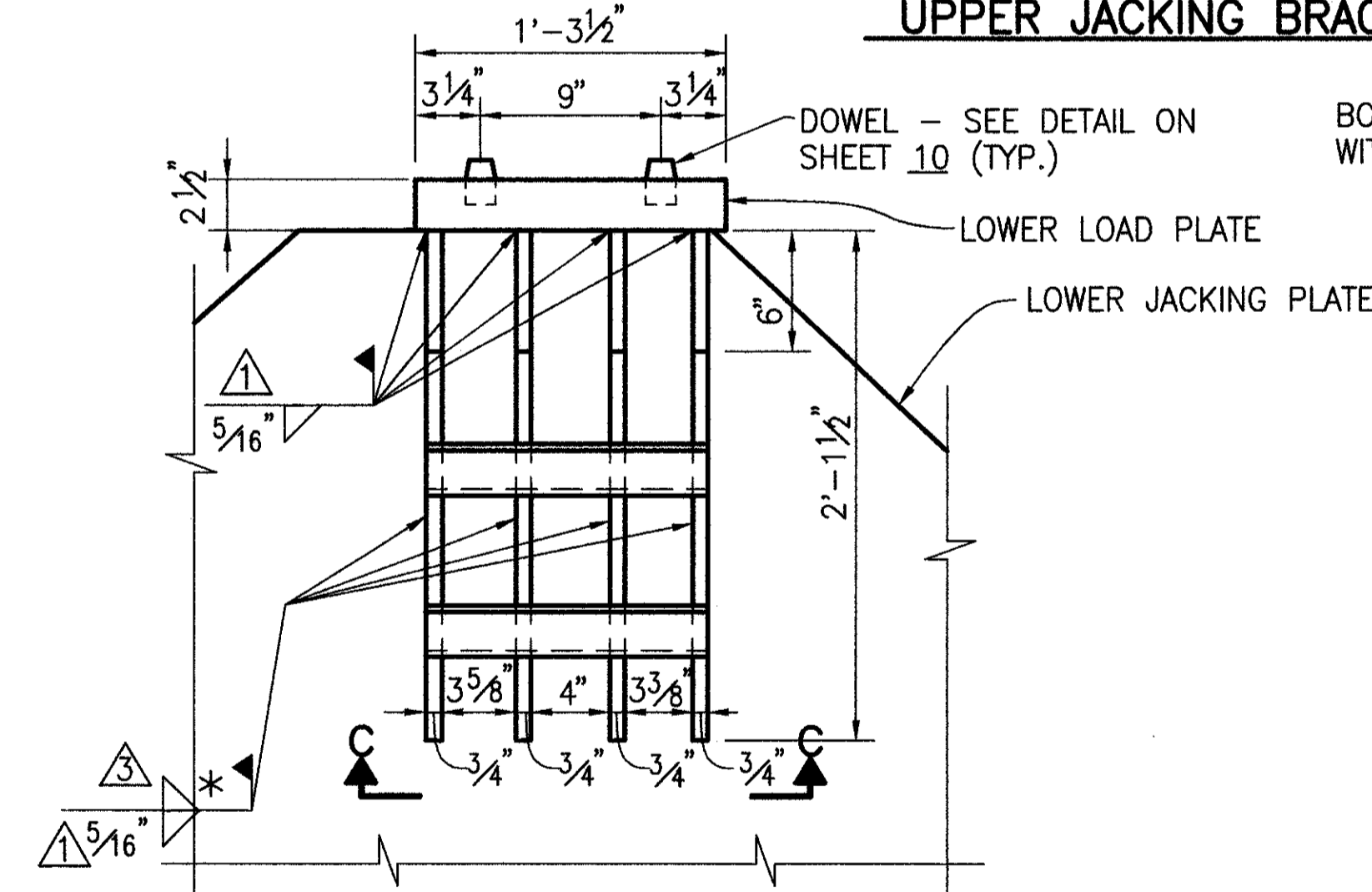


**SIDE VIEW**

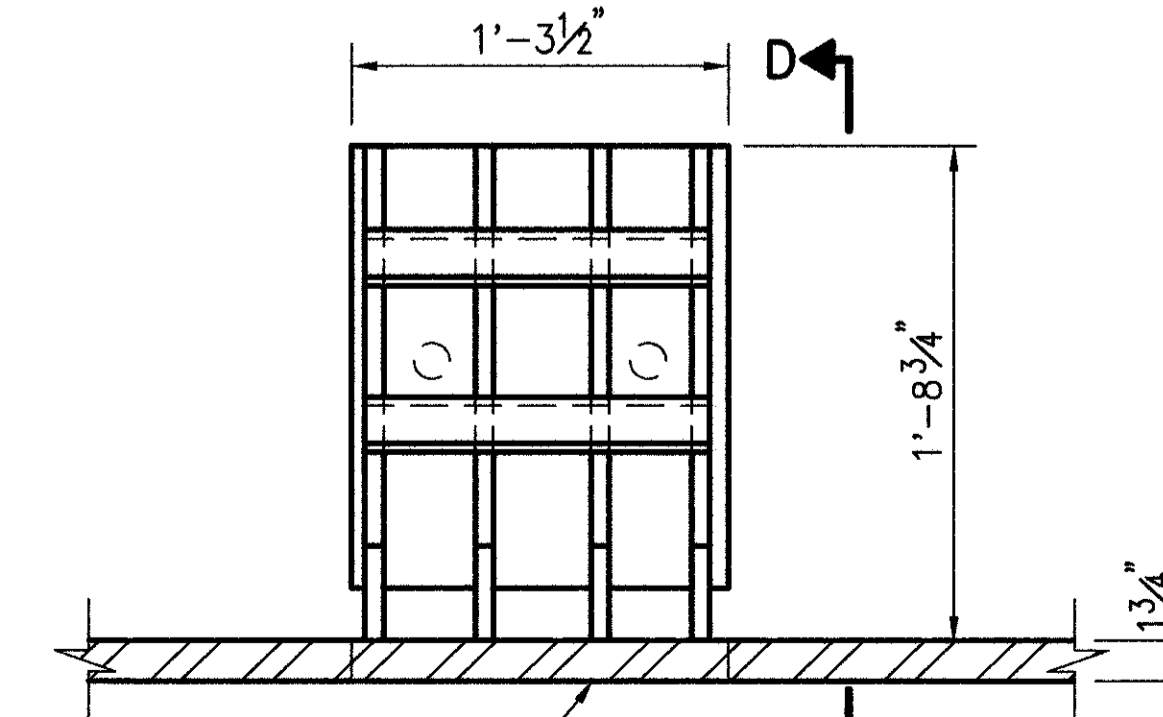


**SECTION A-A**

**UPPER JACKING BRACKET**



**SIDE VIEW**



**SECTION C-C**

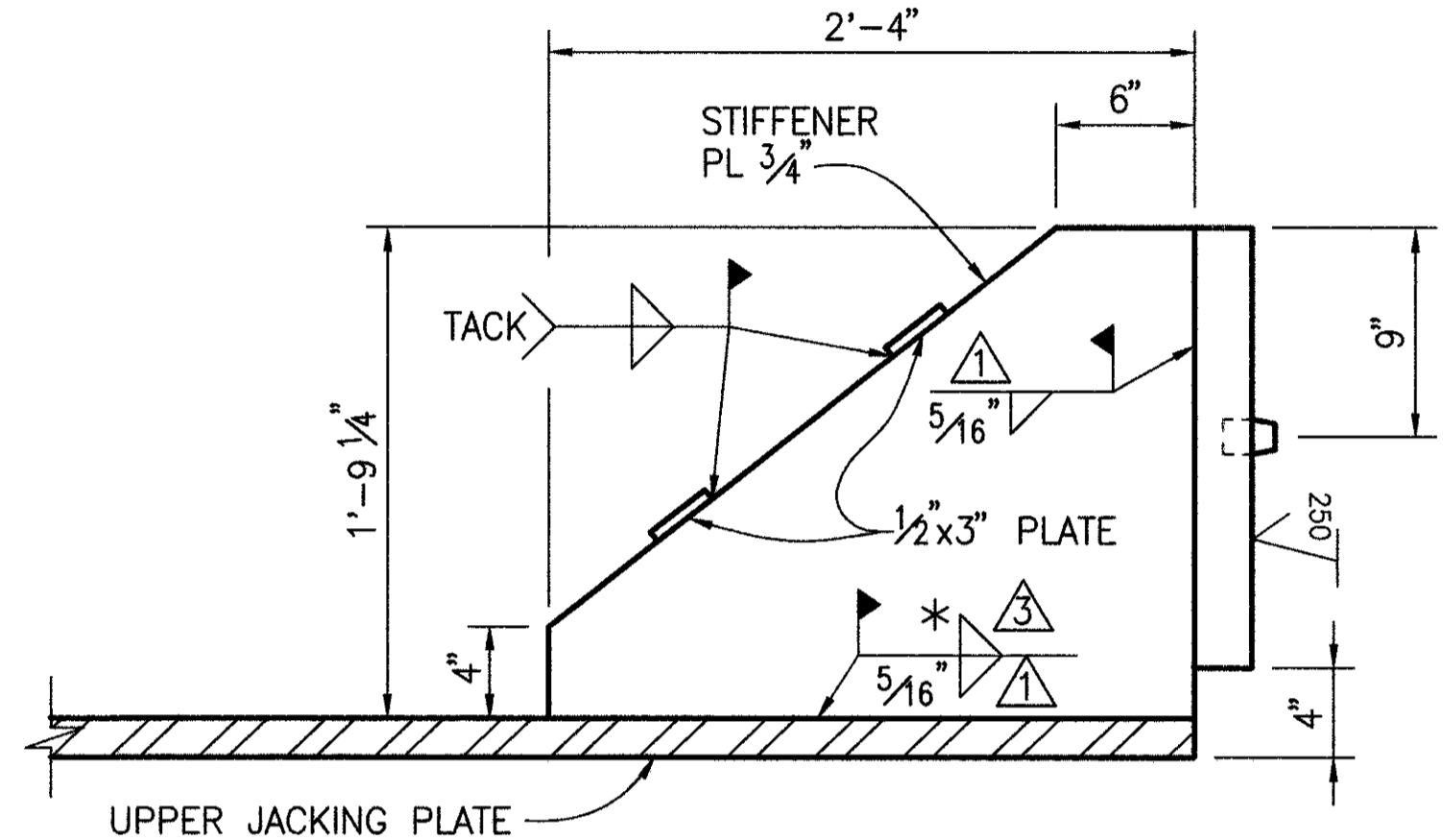
**LOWER JACKING BRACKET**

**NOTES**

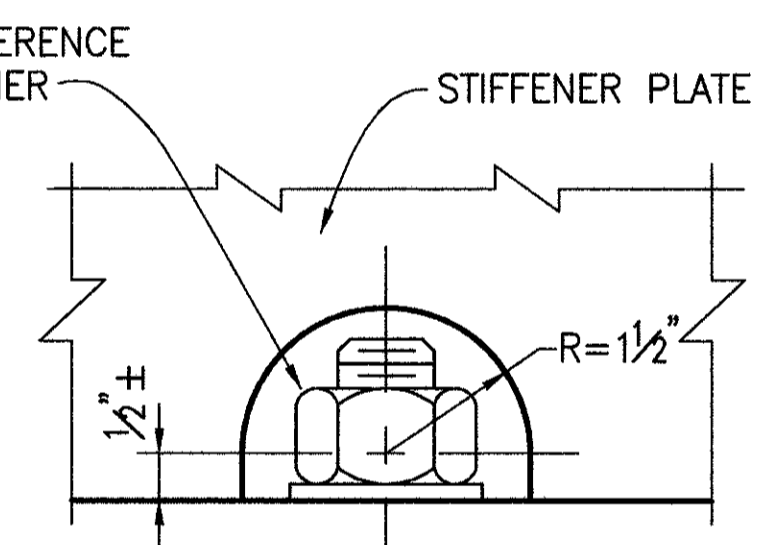
LOCATIONS FOR INSTALLATION: SEE SHEETS 3 & 4.

\* WELD BACK SIDE OF BRACKETS AS MUCH AS POSSIBLE

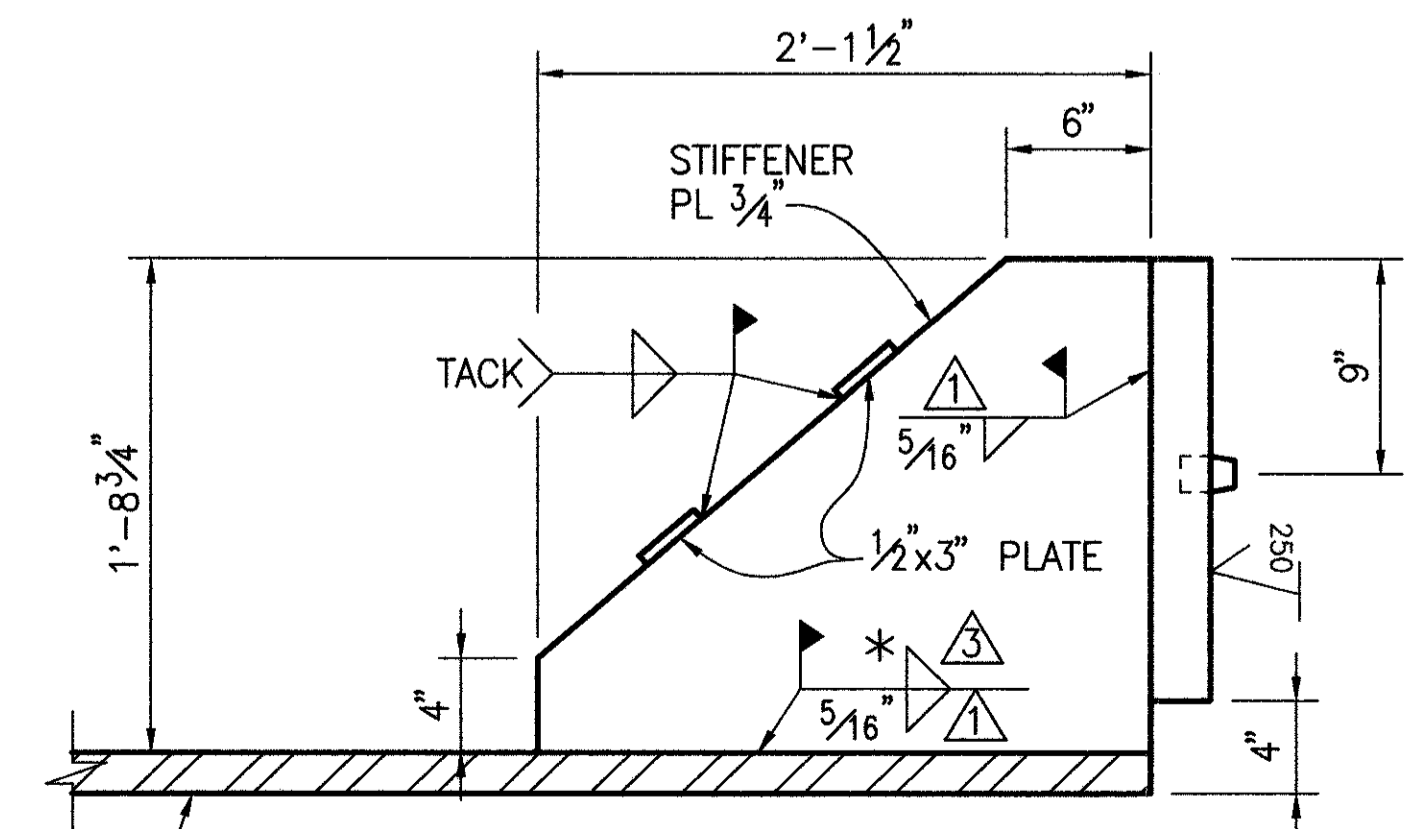
ALL WELDS MAG PARTICLE TESTED O.K.



**SECTION B-B**



**STIFFENER NOTCH DETAIL**



**SECTION D-D**

RELEASED FOR FABRICATION 6/25/96

<p>REVISIONS</p> <p>2/20/97</p>		<p>DATE</p> <p>6/25/96</p>		<p>STRUCTURE FILE NO.</p> <p>4304985</p>	
<p>DESIGNED</p> <p>KAK</p>		<p>REVIEWED</p> <p>DAP</p>		<p>DATE</p> <p>6/25/96</p>	
<p>CHECKED</p> <p>DLR</p>		<p>DRAWN</p> <p>JLS</p>		<p>STRUCTURE FILE NO.</p> <p>4304985</p>	

**JACKING DETAILS - 1**

BRIDGE NO. LAK-90-2342 R  
OVER THE GRAND RIVER

**LAK-90-23.42 L&R**

9  
19