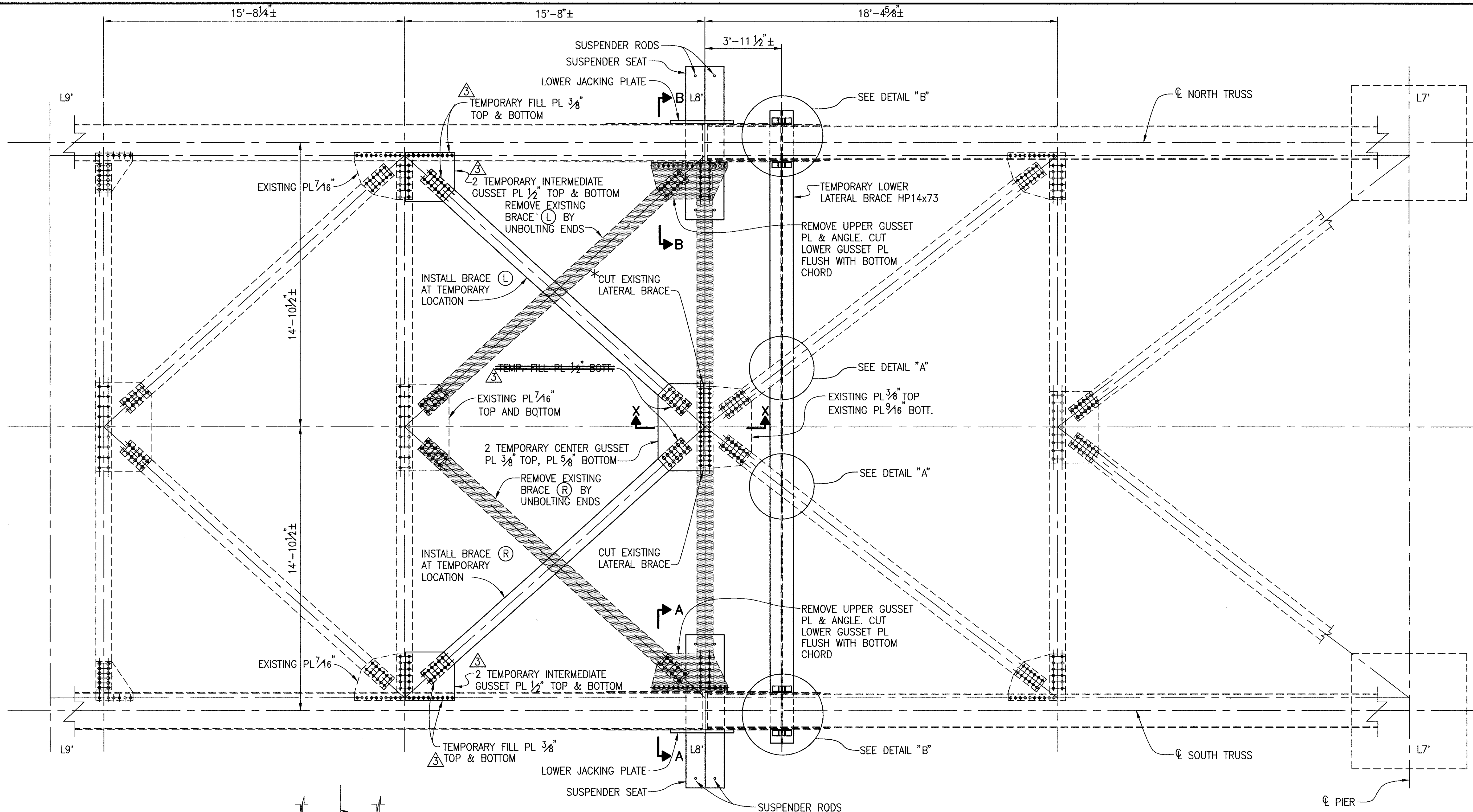
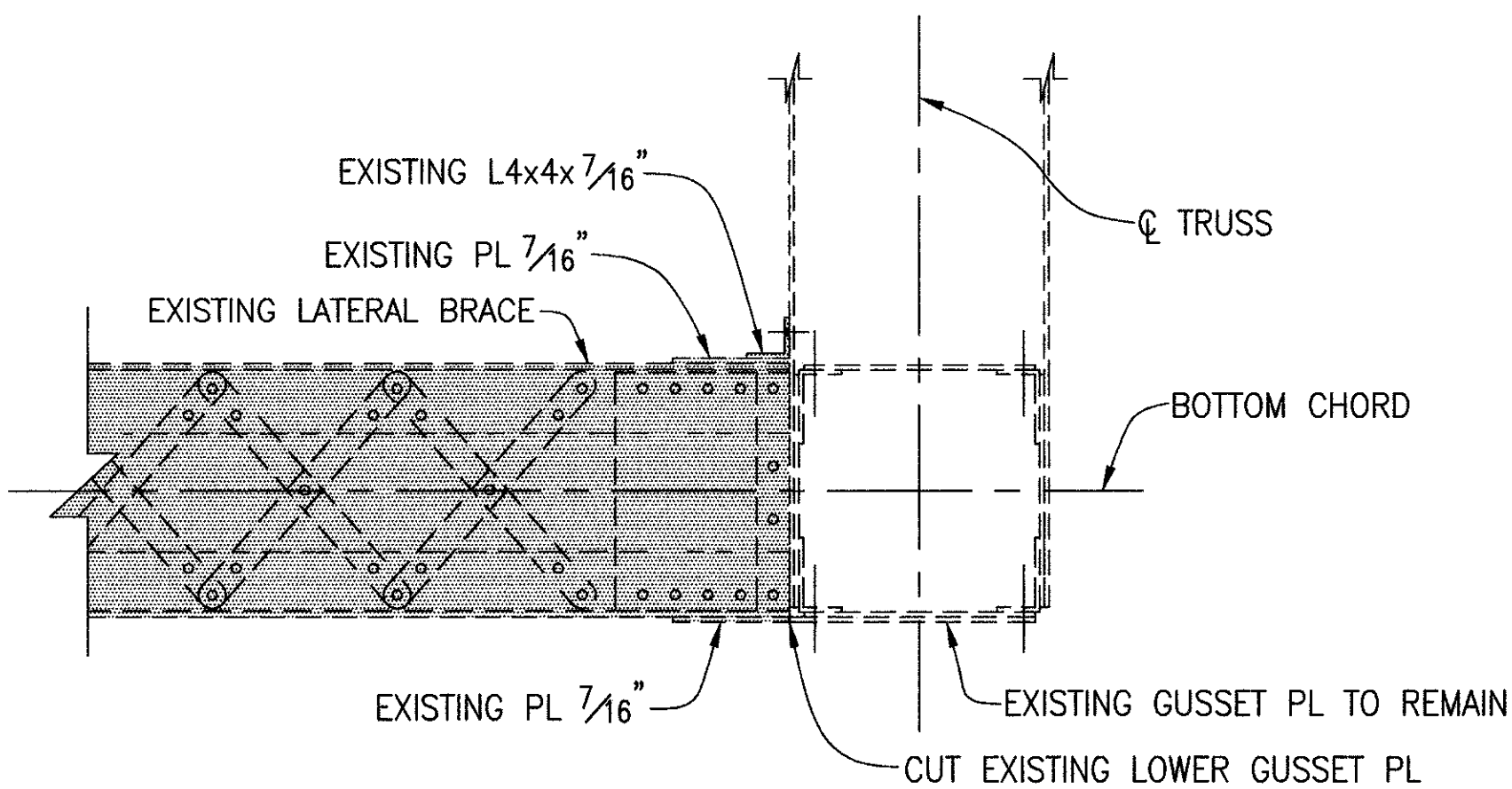


Job No. 96073LB Date: 3/12/97 Drawn By: TWH, RB, JLS, JPS



PLAN



SECTION A-A
SECTION B-B OPPOSITE HAND

△ * WHEN CUTTING FLANGE OF THE SECTION, THE LAST 1" OF MATERIAL (CENTER PORTION AT WEB) RIPPED APART BY EXISTING STRESSES IN BRACE MEMBER. NO OTHER MOVEMENTS WERE OBSERVED DURING REMOVAL PROCESSES.

■ INDICATES MEMBERS TO BE REMOVED

NOTES

DIMENSIONS SHOWN ARE ALONG THE CENTERLINE OF THE LOWER CHORD.

DETAIL "A" AND "B": SEE SHEET NO. 11.

SECTION X-X: SEE SHEET NO. 11.

TEMPORARY GUSSET PLATE DETAILS: SEE SHEET NO. 11.

NEW LATERAL BRACING DETAILS: SEE SHEETS NO. 17 AND 18.

DESIGNED	BLN	CHECKED	DJM
DRAWN	TWH	REVISION	2/20/97
REVIEWED	DAP	STRUCTURE FILE NO.	4304985
DATE	7/10/96		

TEMPORARY LATERAL BRACING PLAN
BRIDGE NO. LAK-90-2342 R
OVER THE GRAND RIVER

LAK-90-23.42 L&R