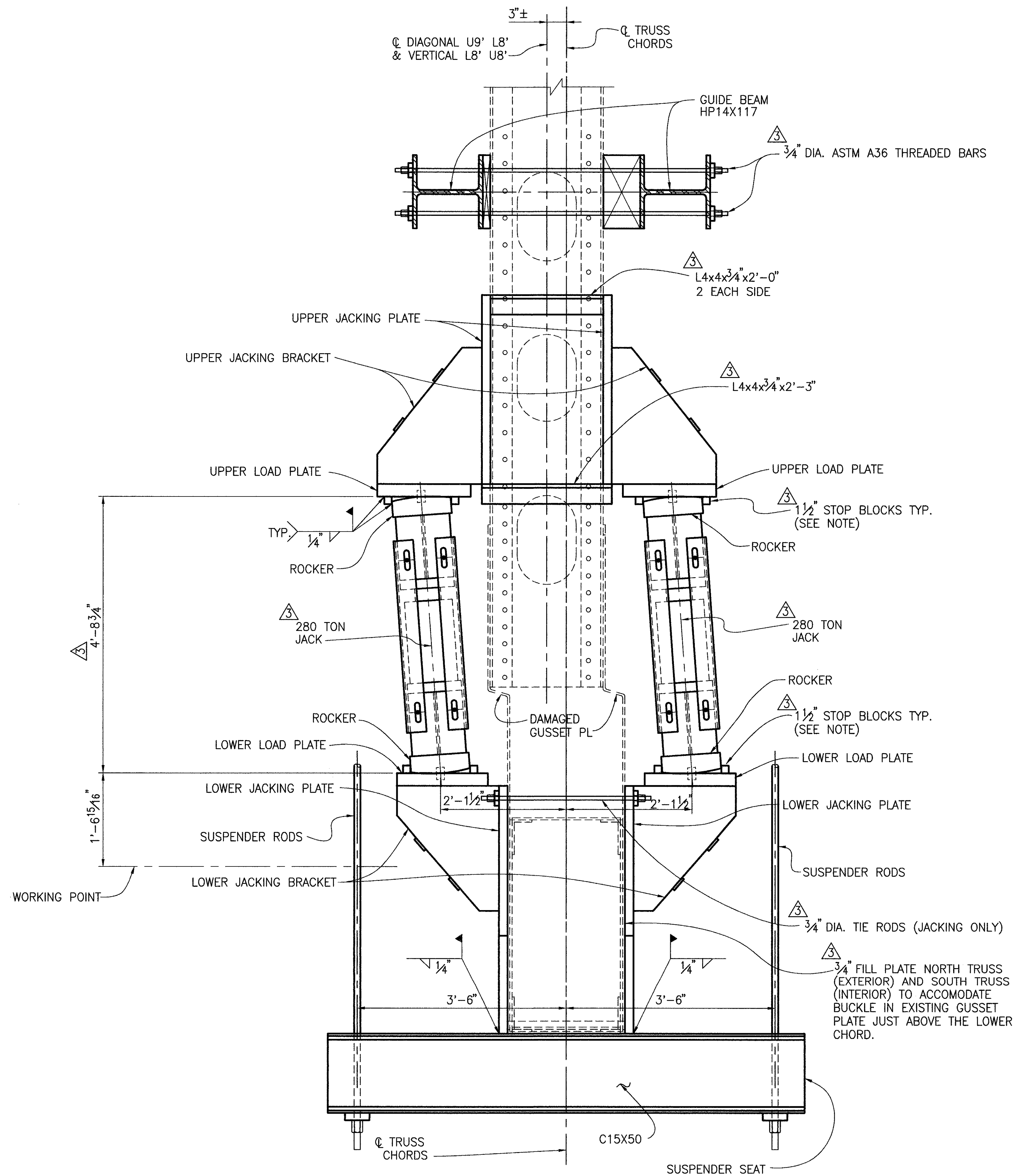


Job No. 96073/R3 Date 3/12/97 Drawn By TMH/LS/JPS

NOTES

1 1/2" STOP BLOCKS WELDED TO LOAD PLATES AND ROCKERS FOLLOWING VERTICAL AND LATERAL JACKING. (BEAM CLAMP MAY BE REMOVED).



SECTION A-A

		RICHLAND ENGINEERING LIMITED 29 NORTH PARK STREET MANSFIELD, OHIO 44902
DATE 7/10/96	REVIEWED DLR	STRUCTURE FILE NO. 4304985
DRAWN KH	CHECKED RWR	REVISION 2/20/97
DAMAGED JOINT L8' REPAIR DETAIL BRIDGE NO. LAK-90-2342 R OVER THE GRAND RIVER		
LAK-90-23.42 L&R		
4 19		