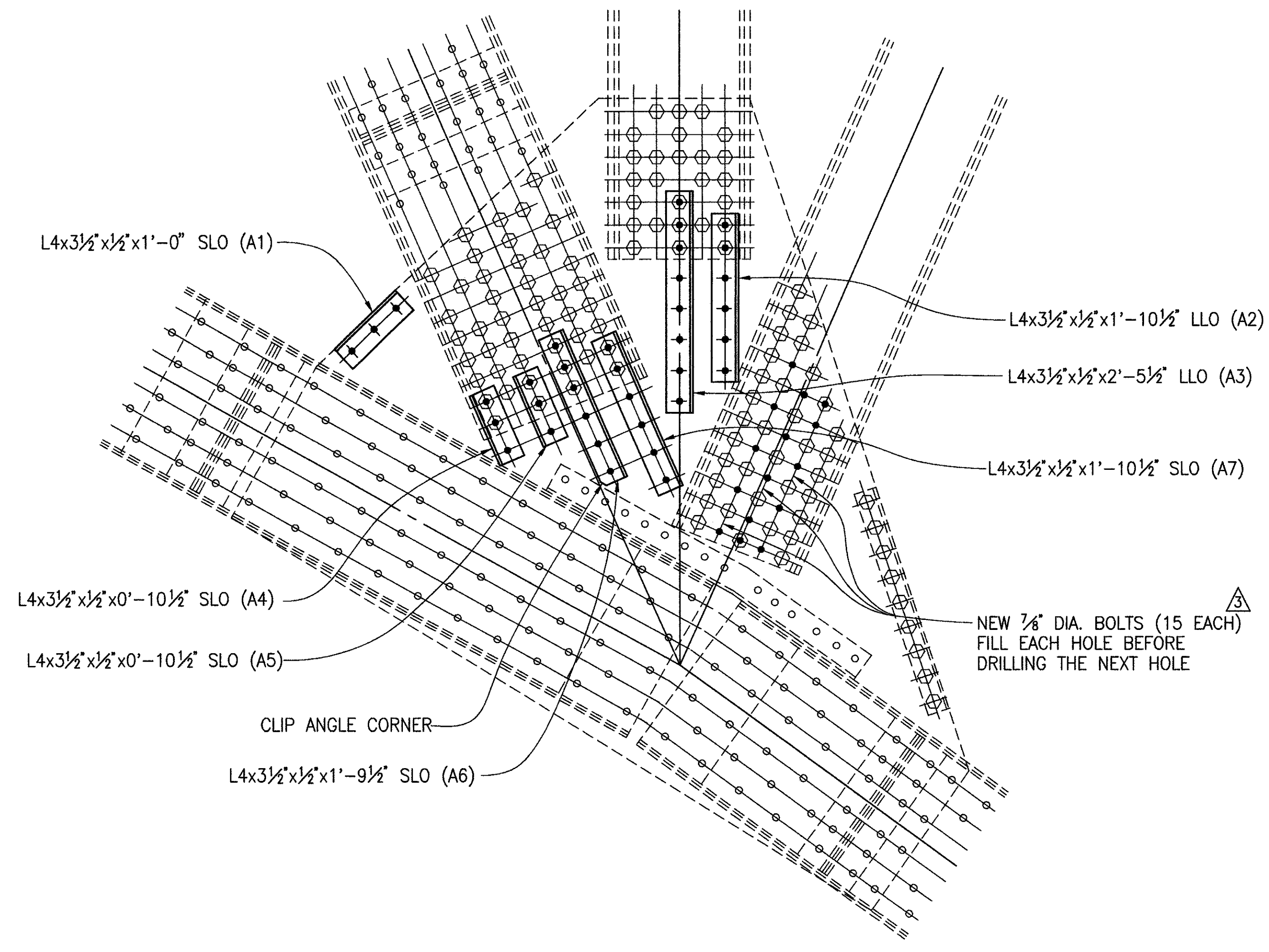


GUSSET PLATE RETROFIT

L8 AND L8' EXTERIOR
 5 LOCATIONS
 (L8' EXTERIOR, WESTBOUND BRIDGE, NORTH TRUSS NOT INCLUDED)
 (L8' EASTBOUND BRIDGE NOT INCLUDED)

NOTATION

- SLO - SHORT LEG OUTSTANDING
- LLO - LONG LEG OUTSTANDING
- + - INDICATES NEW BOLT



GUSSET PLATE RETROFIT

L8 AND L8' INTERIOR
 6 LOCATIONS
 (L8' EASTBOUND BRIDGE NOT INCLUDED)

GENERAL NOTES

MATERIALS: STRUCTURAL STEEL ASTM A36
 CONNECTION BOLTS ASTM A325, 7/8" DIAMETER, GALVANIZED.

HOLE LOCATIONS: MAXIMUM NEW HOLE SPACING SHALL BE 4". MINIMUM EDGE DISTANCE SHALL BE 1 1/4". MINIMUM END DISTANCE ON AN ANGLE SHALL BE 1 1/2".

CONSTRUCTION SEQUENCE AT EACH GUSSET PLATE: STIFFENER ANGLES SHALL BE INSTALLED IN THE ORDER OF SEQUENCE AS THEY ARE NUMBERED (E1, E2, E3, E4, E5, E6, E7 AND A1, A2, A3, A4, A5, A6 AND A7). ONLY ONE GUSSET ON ONE SIDE OF A TRUSS JOINT SHALL BE WORKED ON AT A TIME. EACH ANGLE SHALL BE COMPLETELY INSTALLED WITH ALL BOLTS PROPERLY TIGHTENED BEFORE ADDITIONAL RIVETS OR BOLTS ARE REMOVED, OR ADDITIONAL HOLES ARE DRILLED.

ANGLE SIZE: L4X4X 1/2" MAY BE USED IN PLACE OF L4X3 1/2 X 1/2" WITH SHORT LEG OUTSTANDING (SLO).

SHARP CORNERS: THE CORNERS OF THE OUTSTANDING LEGS OF THE ANGLES SHALL BE ROUNDED BY GRINDING.