

GUSSET PLATE RETROFIT

L4 AND L4' EXTERIOR

8 LOCATIONS - ANGLES A1 & A2

L4 EXTERIOR

△ WESTBOUND BRIDGE NORTH TRUSS ONLY

1 LOCATION - ANGLE A3

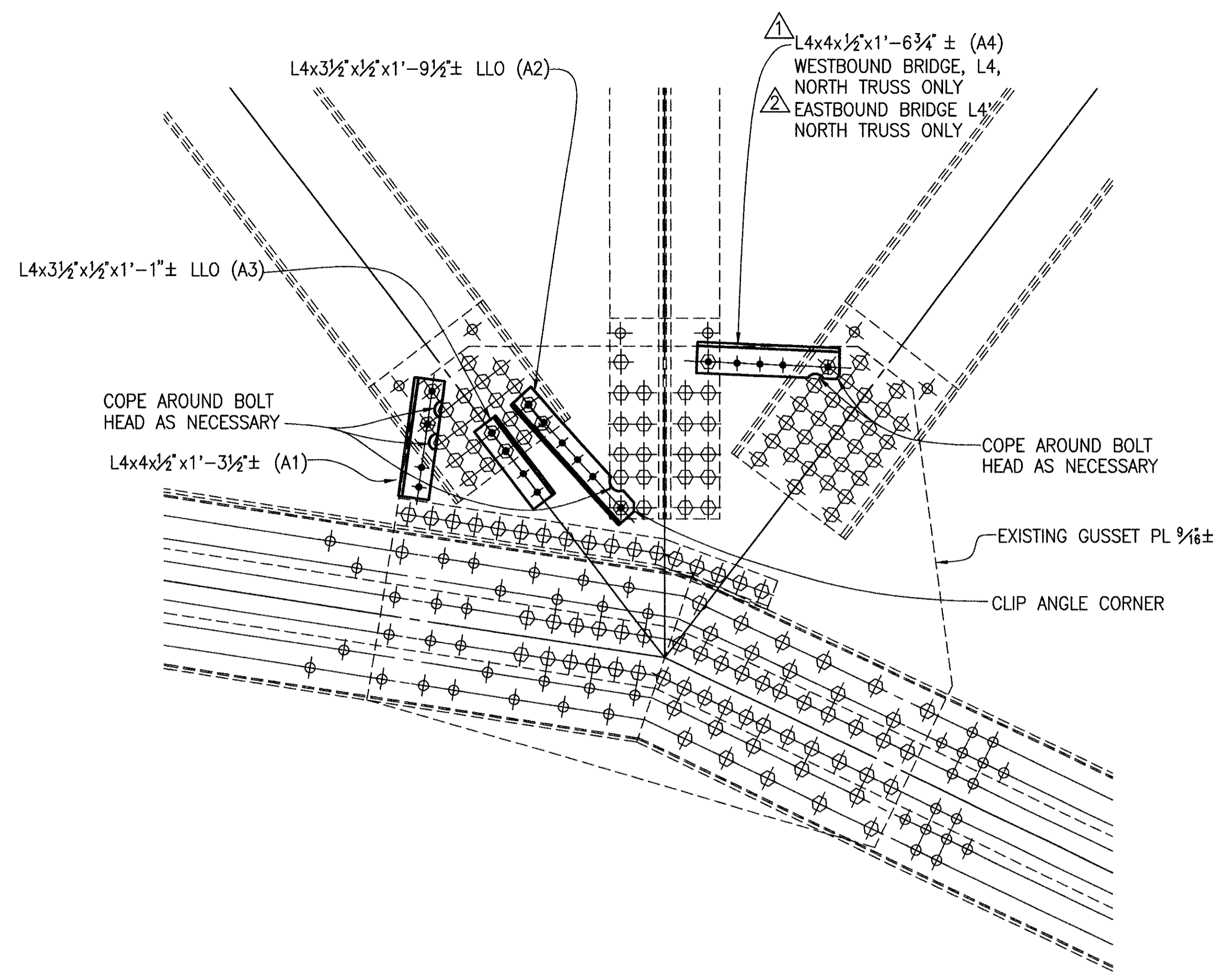
L4' EXTERIOR

△ EASTBOUND BRIDGE NORTH TRUSS ONLY

1 LOCATION - ANGLE A3

NOTATION

- SLO - SHORT LEG OUTSTANDING
- LLO - LONG LEG OUTSTANDING
- + - INDICATES NEW BOLT
- ⊕ - INDICATES EXISTING BOLT
- ⊙ - INDICATES EXISTING RIVET



GUSSET PLATE RETROFIT

L4 AND L4' INTERIOR

8 LOCATIONS - ANGLES A1, A2 & A3

L4 INTERIOR

△ WESTBOUND BRIDGE NORTH TRUSS ONLY

1 LOCATION - ANGLE A4

L4' INTERIOR

△ EASTBOUND BRIDGE NORTH TRUSS ONLY

1 LOCATION - ANGLE A4

GENERAL NOTES

SEE SHEET 2 OF 8

DESIGNED	DAP	CHECKED	MSL
REVIEWED	DHT	REVIEWED	MSL
DATE	10/4/96	DATE	10/9/96
STRUCTURE FILE NO.	4304950 & 4304985	DATE	10/4/96

RICHLAND ENGINEERING LIMITED
 29 NORTH PARK STREET
 MANSFIELD, OHIO 44902

TRUSS GUSSET PLATE L4 & L4' RETROFIT DETAILS

LAK-90-23.42 L&R