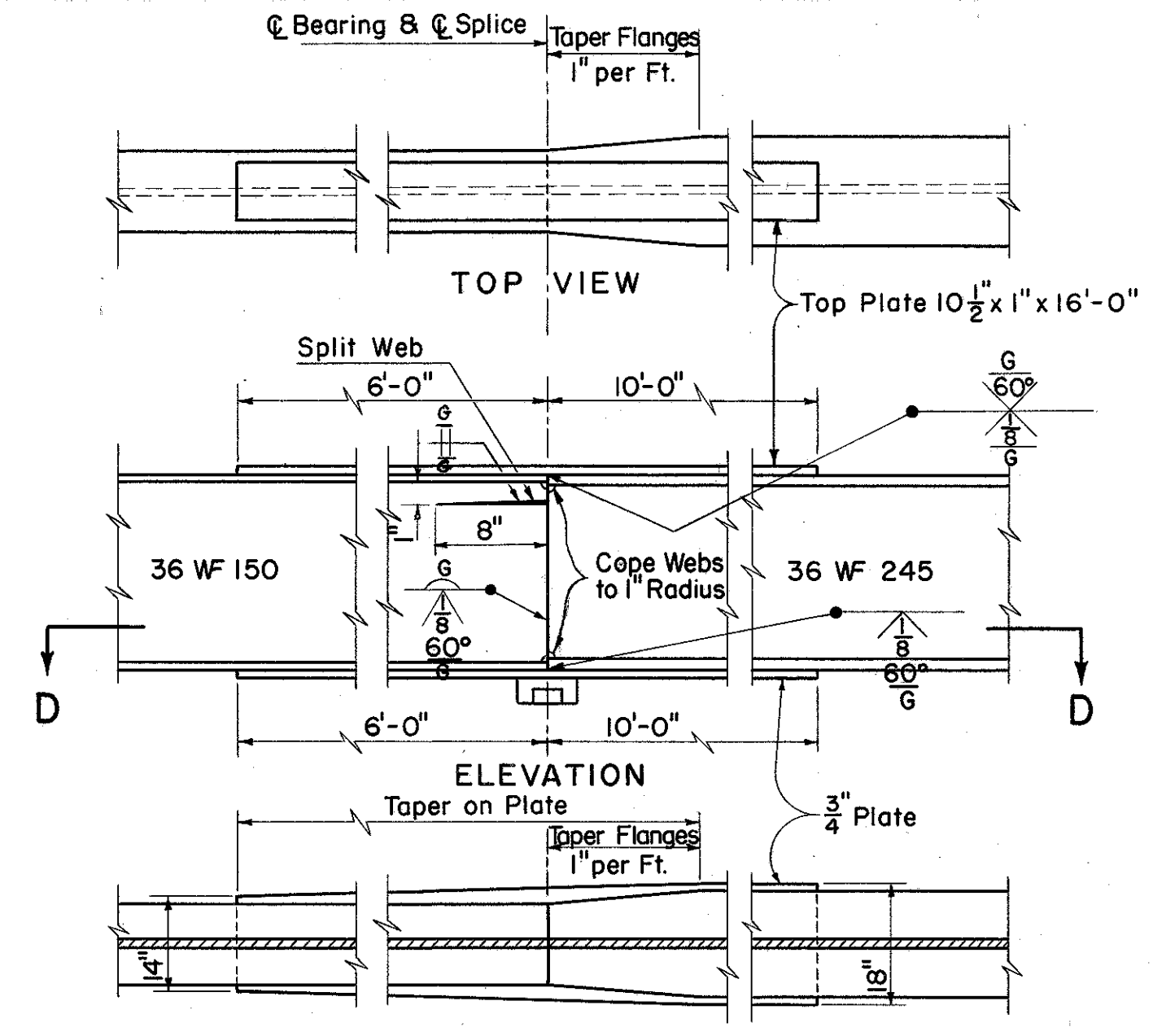
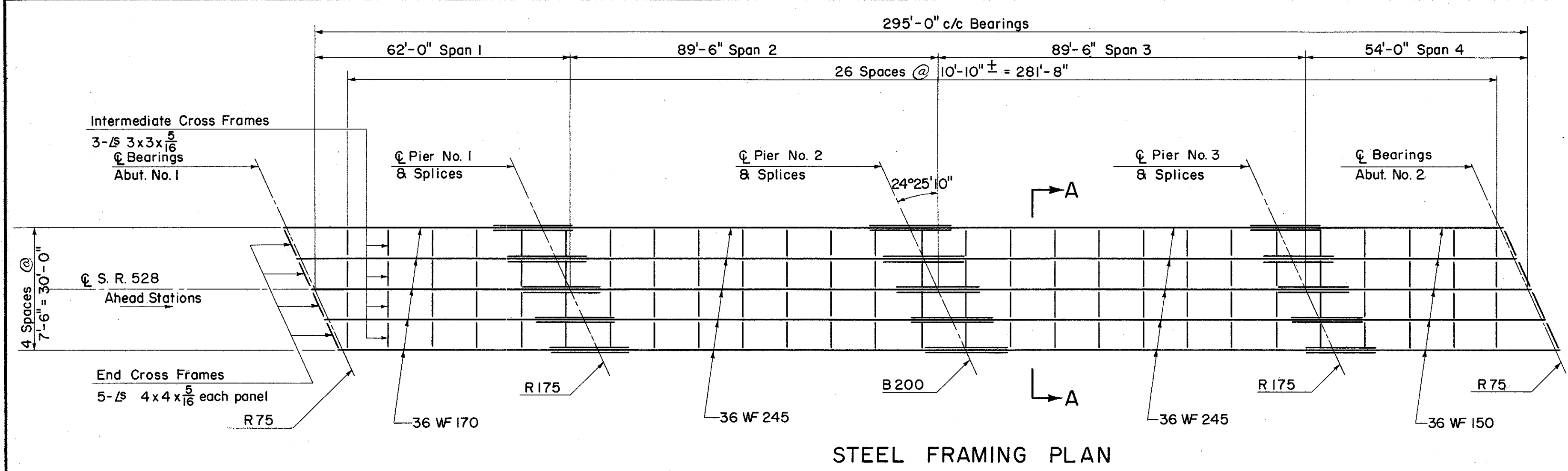
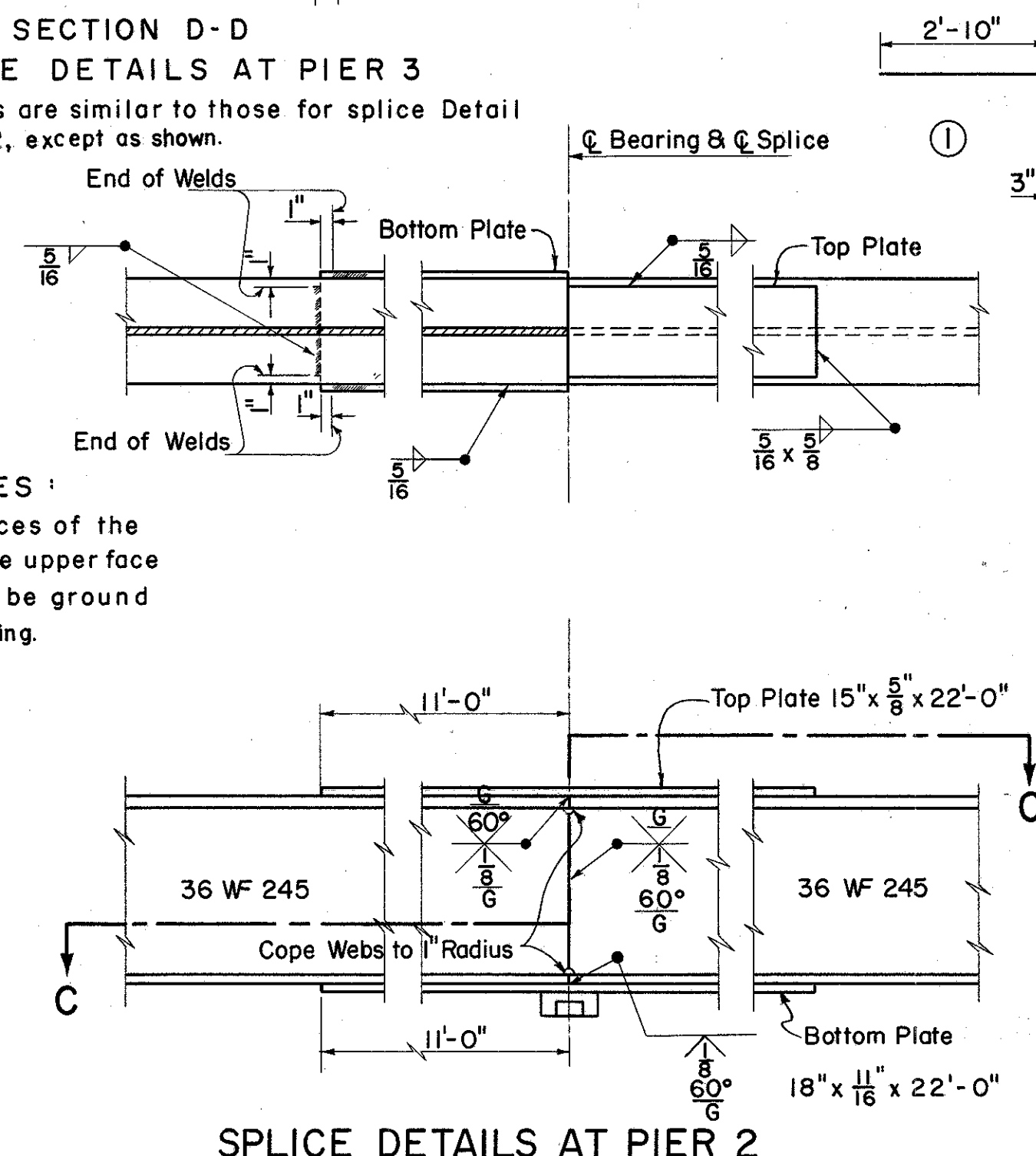
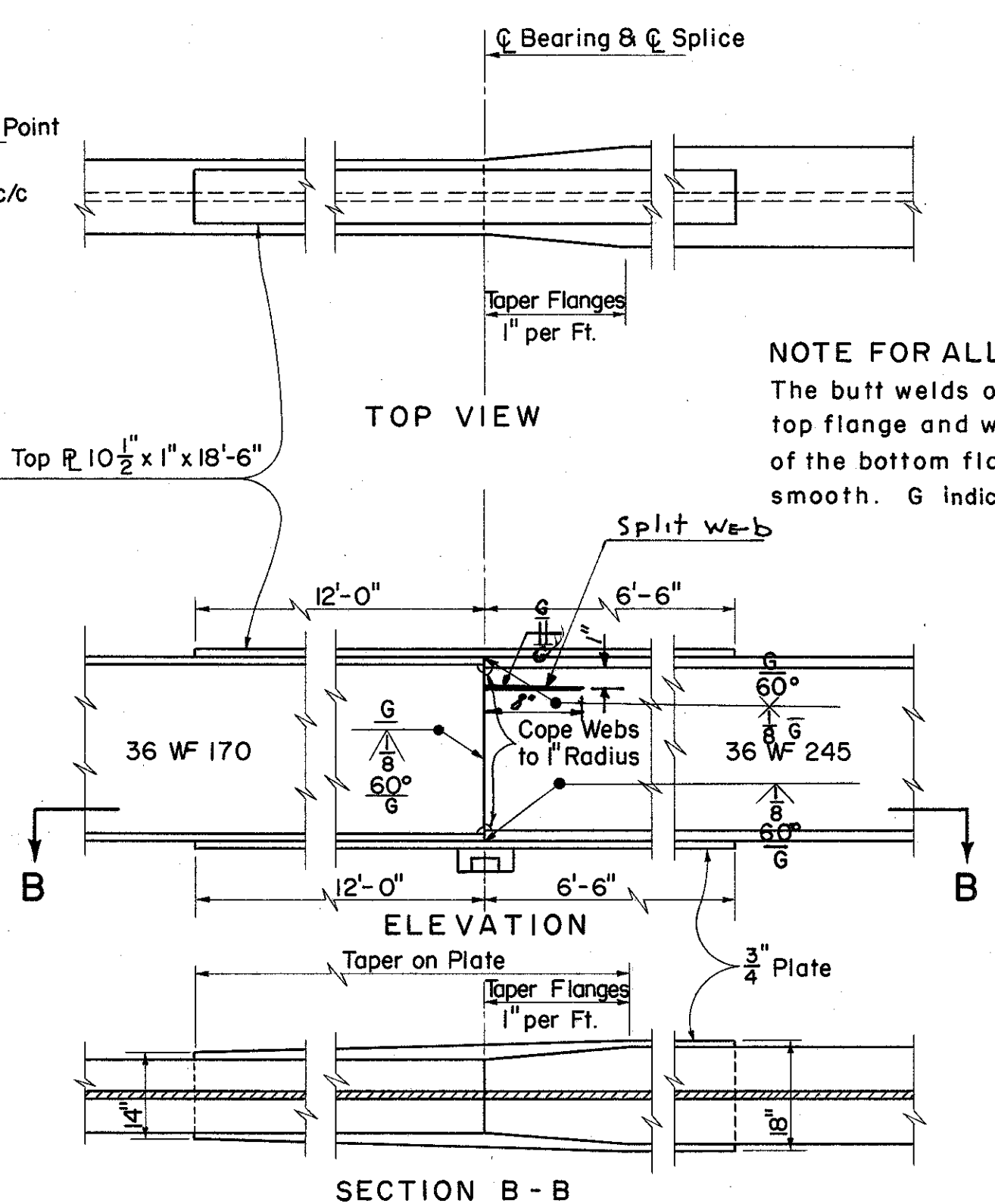
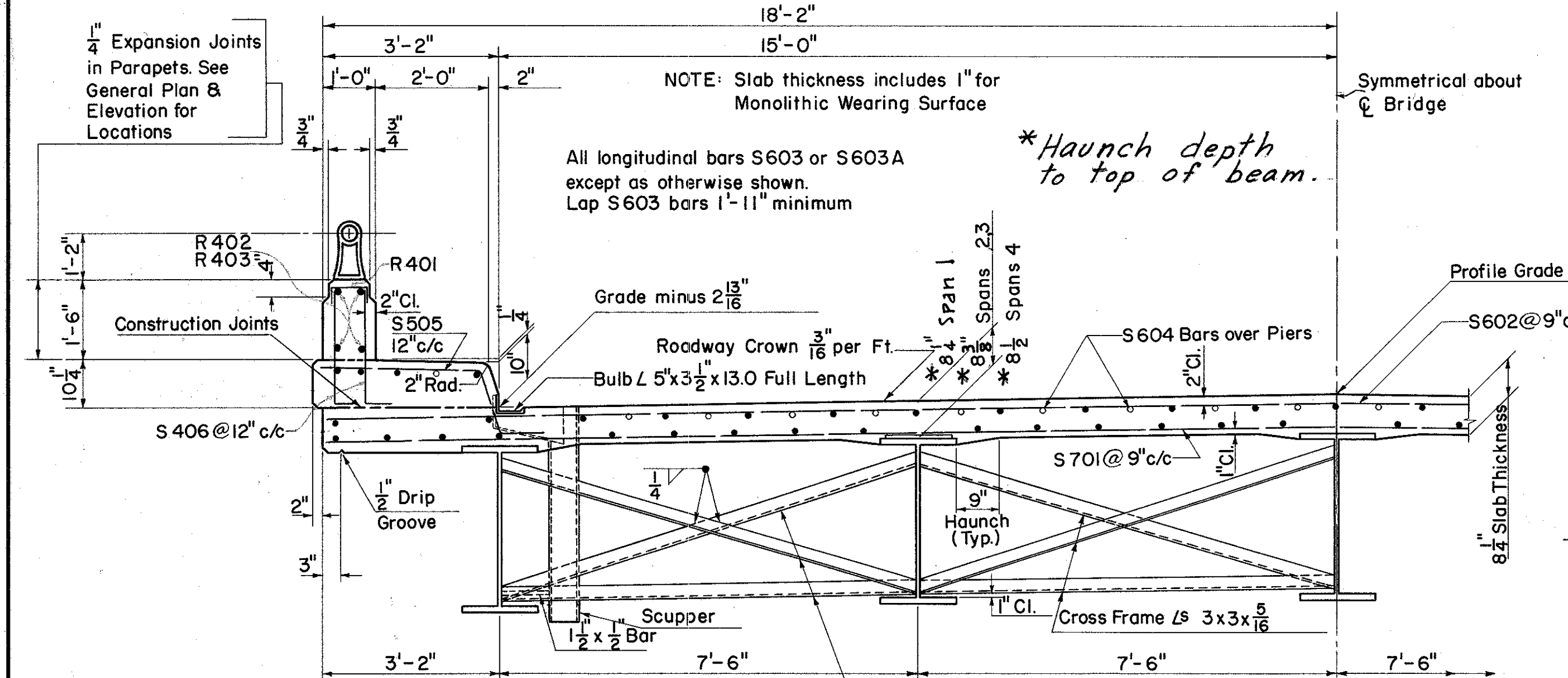


LAKE COUNTY  
LAK-1-22.60



BAR SCHEDULE FOR SUPERSTRUCTURE

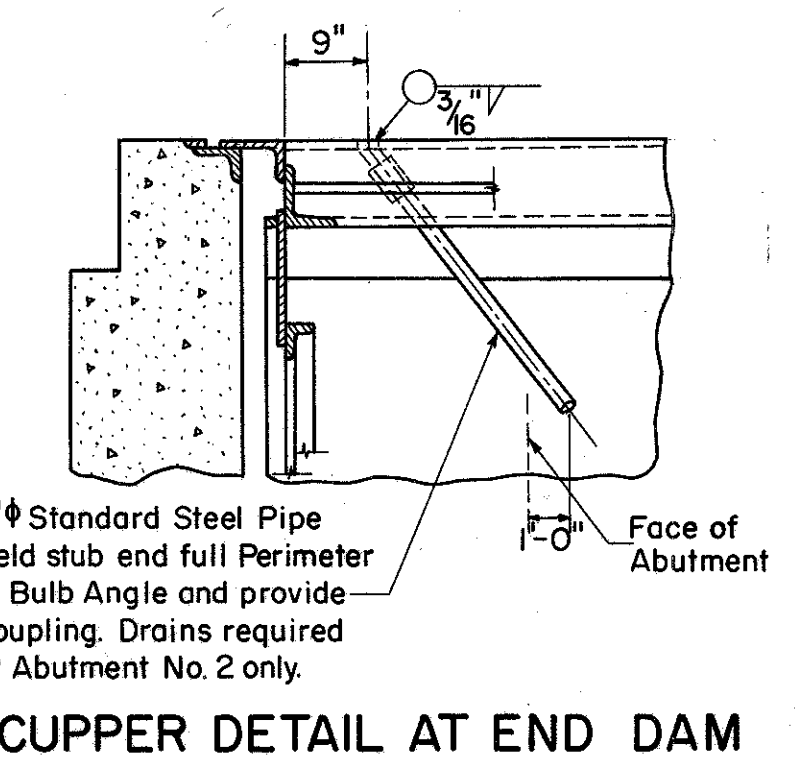
MARK	NUMBERS	SIZE	LENGTH	TYPE	REMARKS	WEIGHT
S701	374	7	36'-0"	Str.		27,520
S602	374	6	36'-0"	Str.		20,223
S701A	40	7	6'-0" to 34'-3"	Str.	2 each vary by 1'-5 $\frac{7}{8}$ "	1647
S602A	40	6	6'-0" to 34'-3"	Str.	2 each vary by 1'-5 $\frac{7}{8}$ "	1211
S603	427	6	40'-0"	Str.		25,654
S603A	61	6	30'-0"	Str.		2749
S604	60	6	35'-0"	Str.		3154
S505	592	5	4'-7"	1		2830
S406	1184	4	2'-5"	2		1911
R401	592	4	1'-4"	4	Include with	
R402	136	4	15'-6"	Str.	Railing	
R403	16	4	12'-9"	Str.	for Payment	
S605	6	6	6'-0"	Str.		54
S702	6	7	6'-0"	Str.		74
TOTAL						87,027



1. Raise end of beam at Pier 2, 2 $\frac{7}{8}$ "
2. Butt Weld Beam Flanges and Webs at Pier 1 using the following procedure: make one pass on each flange, then one on the web, and repeat until welds are completed.
3. Weld top and bottom moment plates at Pier 1.
4. Lower end of beam at Pier 2.
5. Make splices at Piers 2 & 3 in the same manner, raising the ends of the beams 3 $\frac{1}{2}$ " at Pier 3 and 1" at Abutment 2.

DEFLECTION & CAMBER

LOCATION	INSIDE BEAMS			OUTSIDE BEAMS		
	62'SPAN	54'SPAN	MIDDLE SPANS	62'SPAN	54'SPAN	MIDDLE SPANS
DEFLECTION DUE TO WEIGHT OF STEEL	$\frac{1}{16}$ "	$\frac{1}{16}$ "	$\frac{3}{16}$ "	$\frac{1}{16}$ "	$\frac{1}{16}$ "	$\frac{3}{16}$ "
DEFLECTION DUE TO REMAINING DEAD LOAD	$\frac{7}{16}$ "	$\frac{1}{4}$ "	$\frac{9}{16}$ "	$\frac{1}{2}$ "	$\frac{1}{4}$ "	$\frac{5}{8}$ "
CONVEXITY REQUIRED FOR VERTICAL CURVE	0	0	$\frac{1}{16}$ "	0	0	$\frac{1}{16}$ "
SUM OF DEFLECTION AND CONVEXITY	$\frac{1}{2}$ "	$\frac{5}{16}$ "	$\frac{13}{16}$ "	$\frac{9}{16}$ "	$\frac{9}{16}$ "	$\frac{7}{8}$ "
REQUIRED CAMBER	0	0	1"	0	0	1"



SEC. C-35 FED. AID PROJ. AC. I-1103 (29)

PREPARED BY  
CAPITOL ENGINEERING ASSOCIATES, DILLSBURG, PA.  
FOR  
STATE OF OHIO  
DEPARTMENT OF HIGHWAYS

SUPERSTRUCTURE DETAILS  
BRIDGE NO. LAK-1-2588  
S.R.I UNDER S.R. 528  
LAKE COUNTY  
STA. 1048+74.65

DESIGNED	DRAWN	TRACED	CHECKED	REVISED	DATE	REVISED
						11-24-58