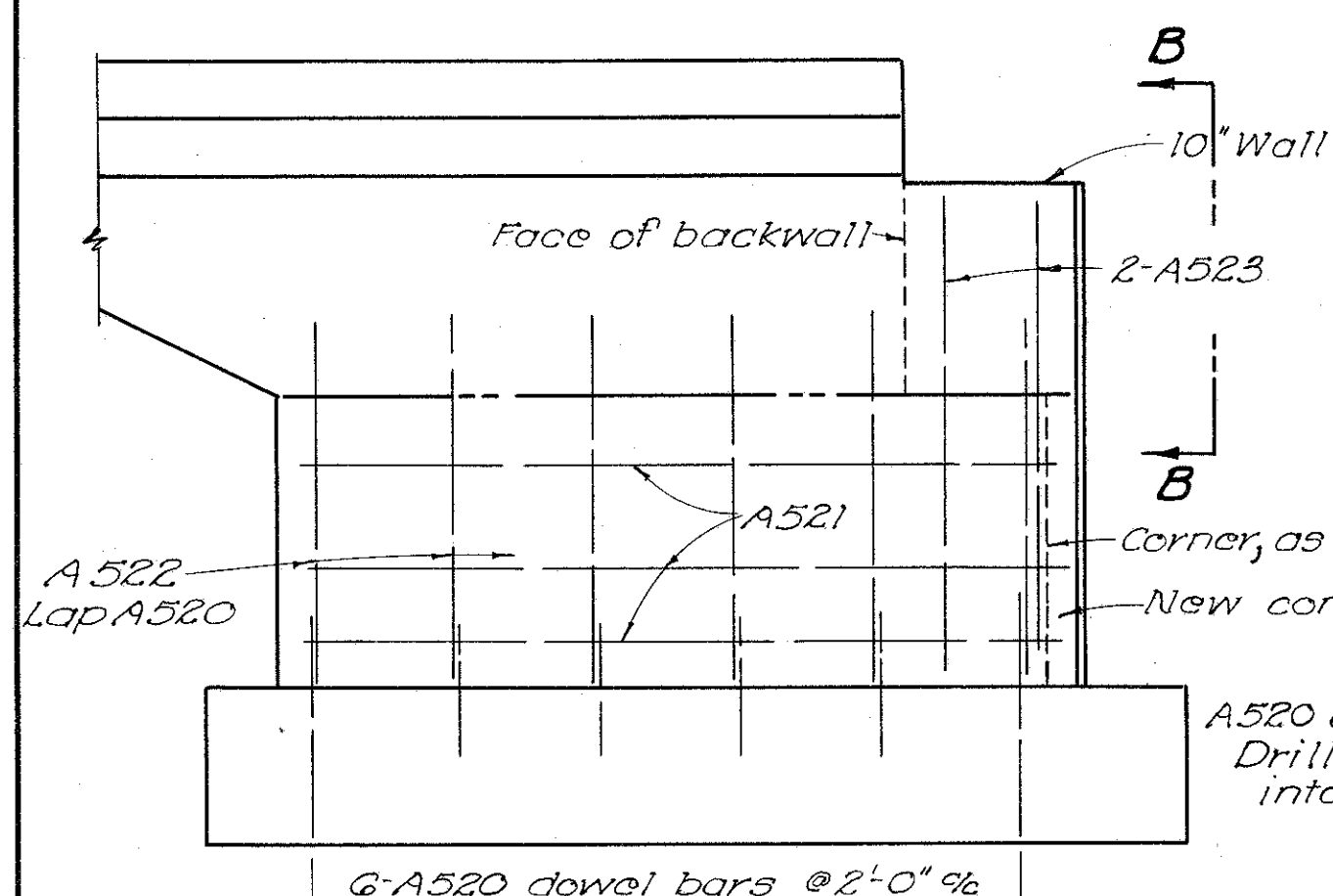


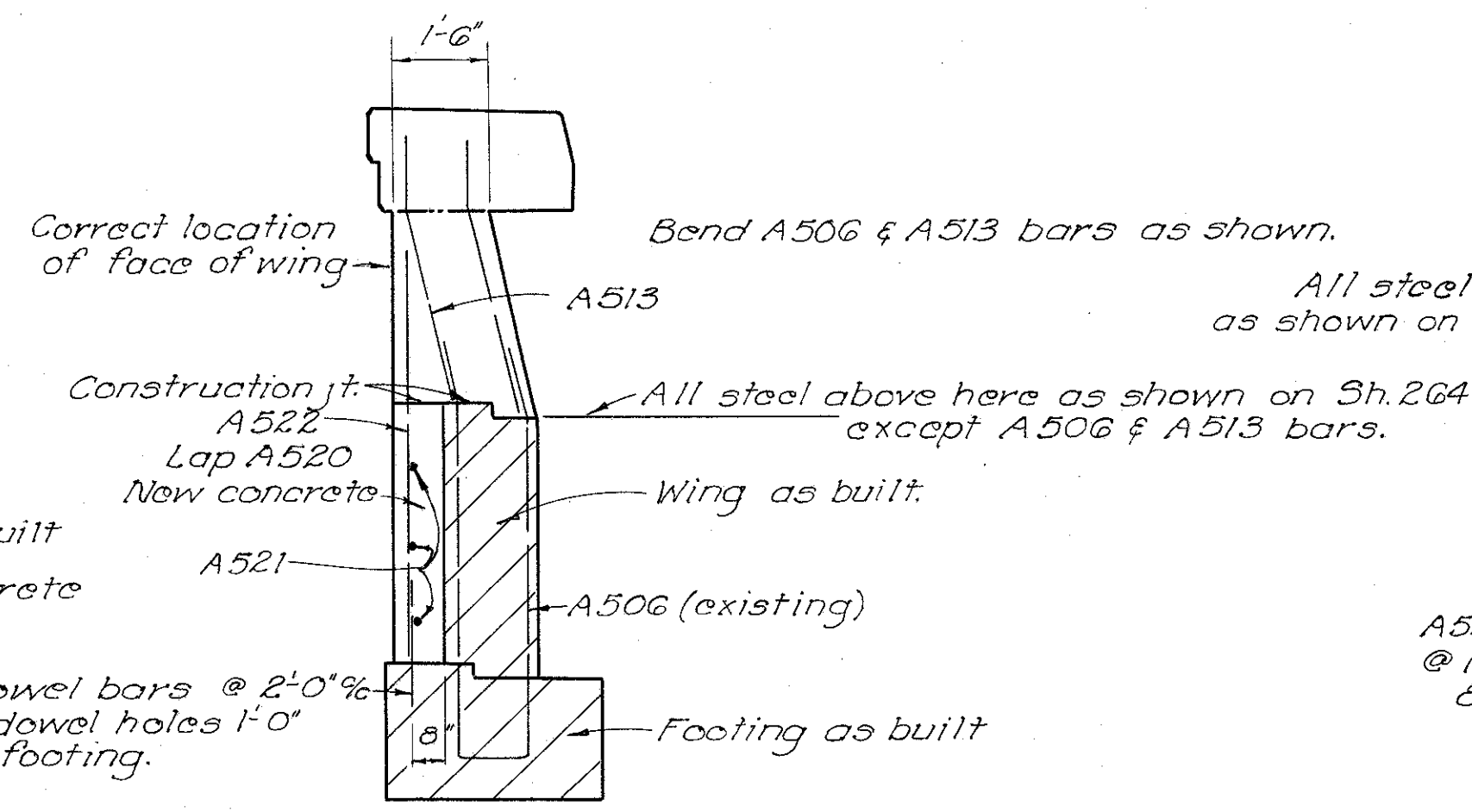
\*Field measurements

This view only { Solid lines show abutment below bridge seat constr. jt. as constructed.  
Dotted lines indicate intended plan location.  
Corrective procedures not indicated in this view.

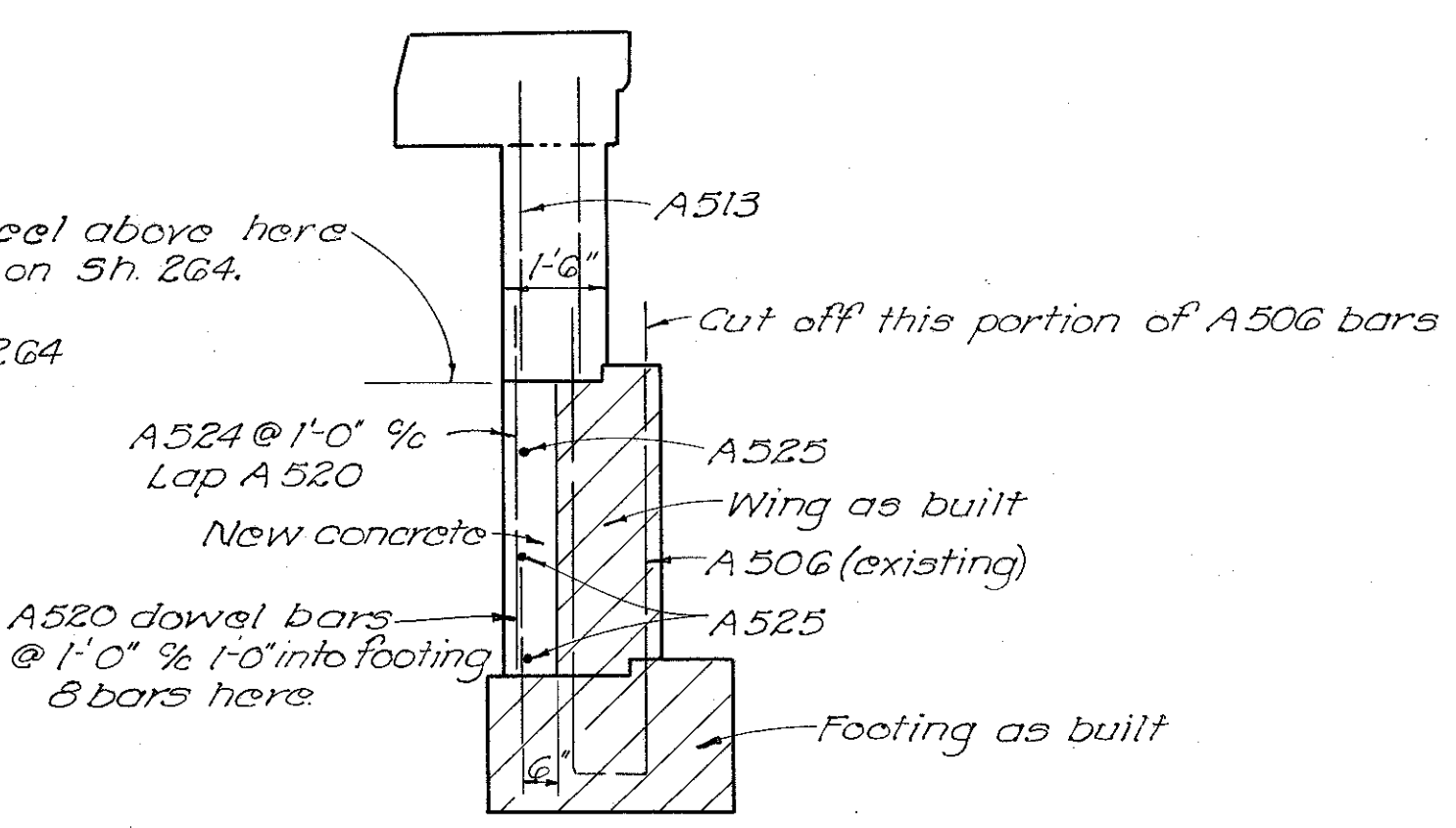
PLAN



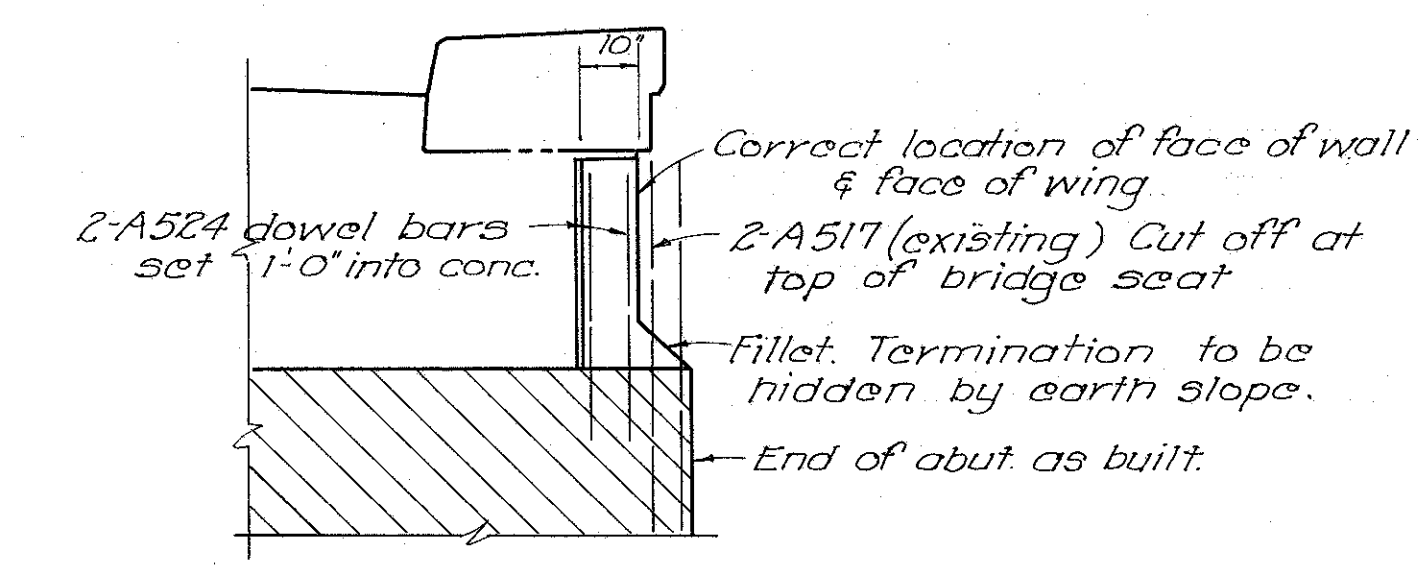
ELEVATION - EAST WING



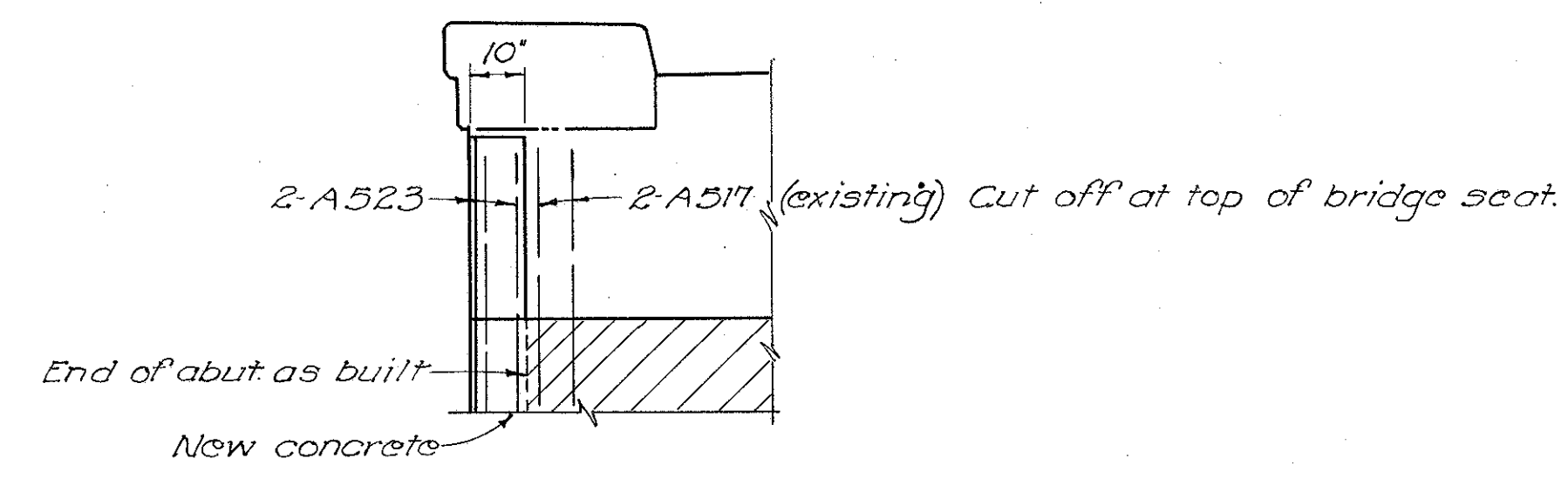
SECTION A-A



SECTION C-C



FRONT VIEW - N.W. CORNER



VIEW B-B

Mark	No.	Length	Weight	Shape
A520	14	2'-7"	38	Straight
A521	3	10'-6"	33	"
A522	6	6'-6"	41	"
A523	4	7'-0"	32	"
A524	4	4'-5"	19	"
A525	3	6'-0"	19	"

Total 202 lbs

Reason for this revision: Portion of abutment below bridge seat construction joint was misplaced approximately 11" off & roadway to west.

This sheet supplements Sheet No. 264.

STATE OF OHIO DEPARTMENT OF HIGHWAYS DIVISION OF DESIGN AND CONSTRUCTION BUREAU OF BRIDGES						
<b>ABUTMENT No. 1 REVISED</b>						
<b>BRIDGE No. LAK-1-2588</b>						
<b>SR. 1 UNDER S.R. 528</b>						
<b>LAKE COUNTY</b>				<b>STA. 1048+74.65</b>		
DESIGNED	DRAWN	TRACED	CHECKED	REVIEWED	DATE	REVISED
	WJJ	RD.		BFG	3-25-59	