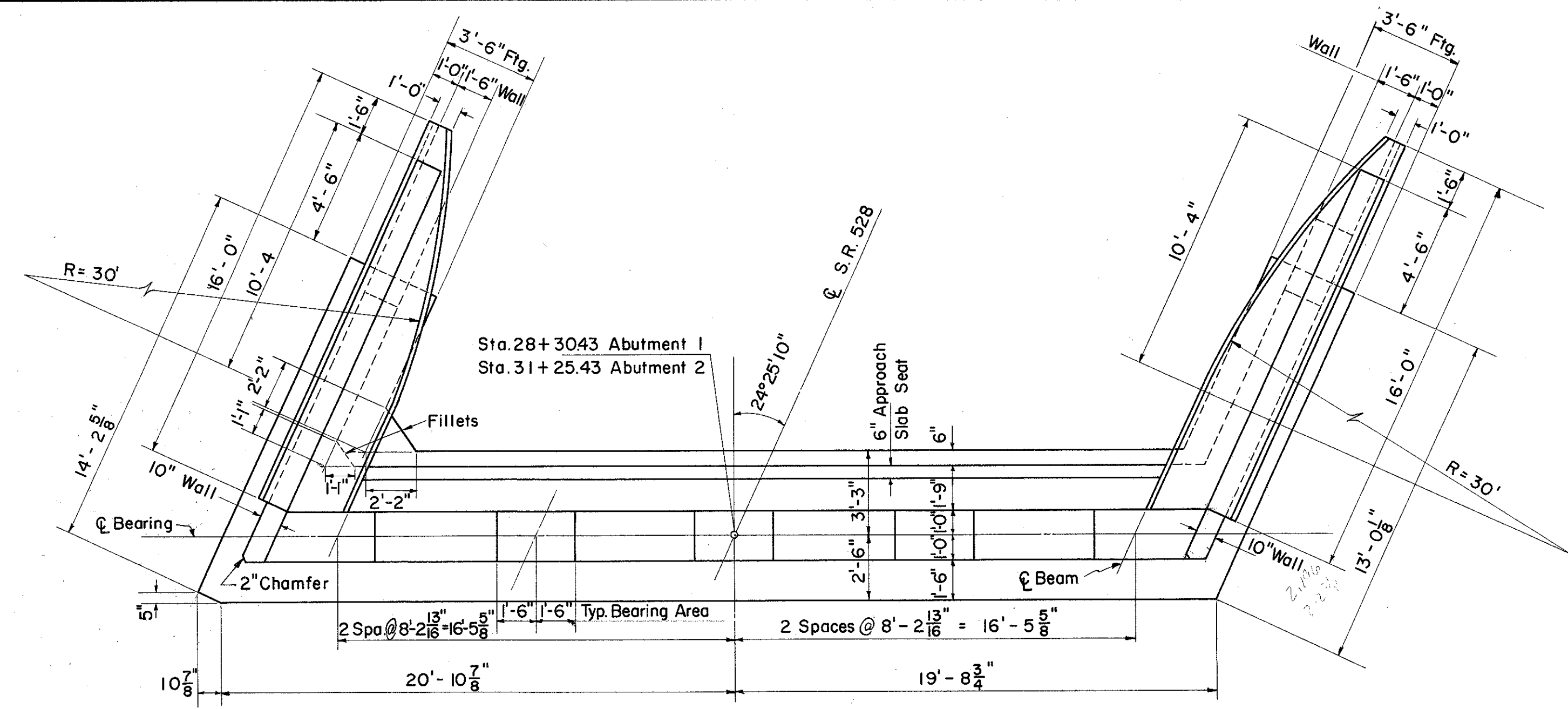
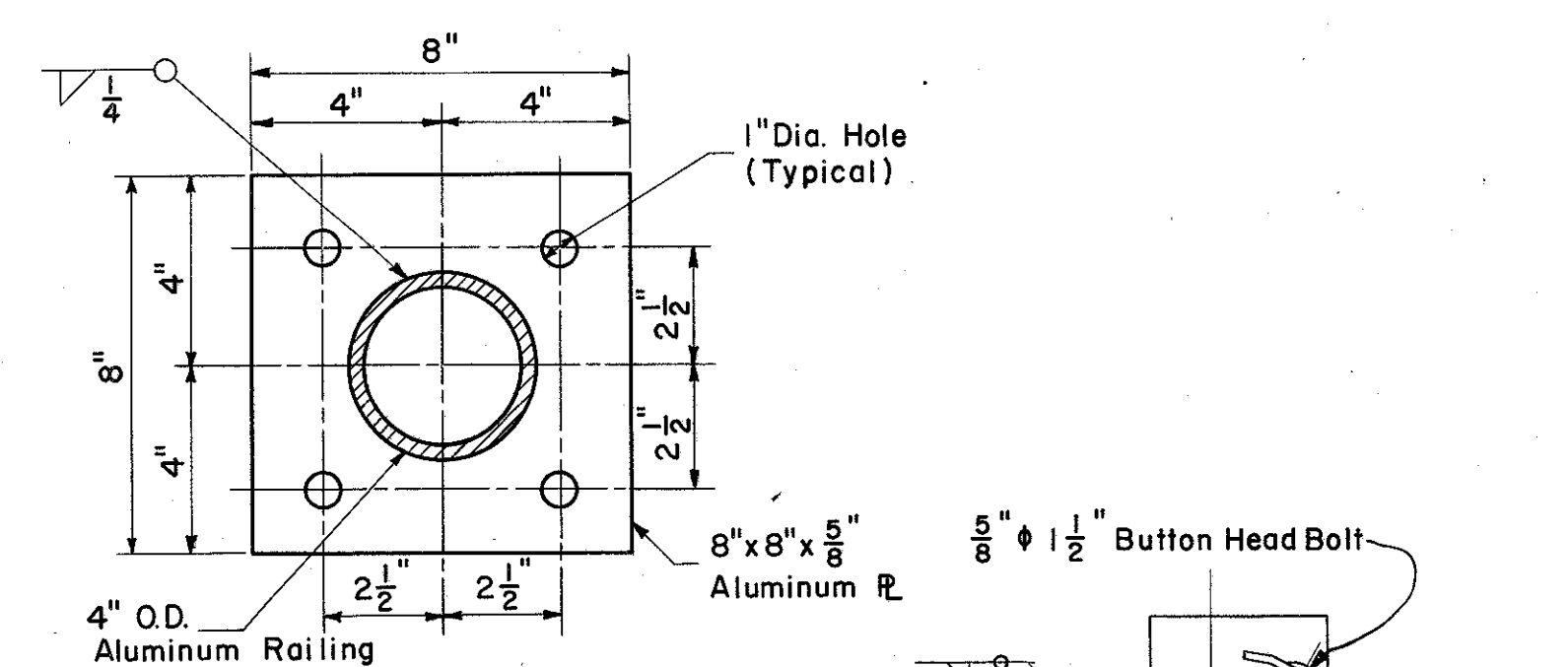


LAKE COUNTY
SEC. LAK-1-22.60
1 1/4" x 20" galvanized machine bolt with square heads and with minimum thread length of 3". Bolts to project 2" from face of concrete.

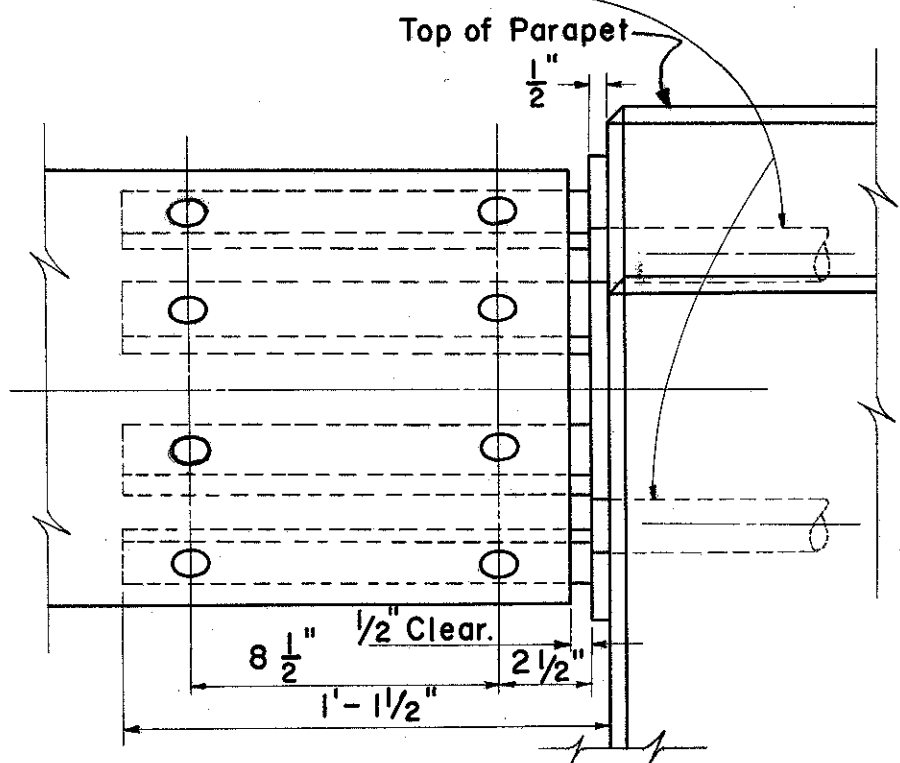


PLAN

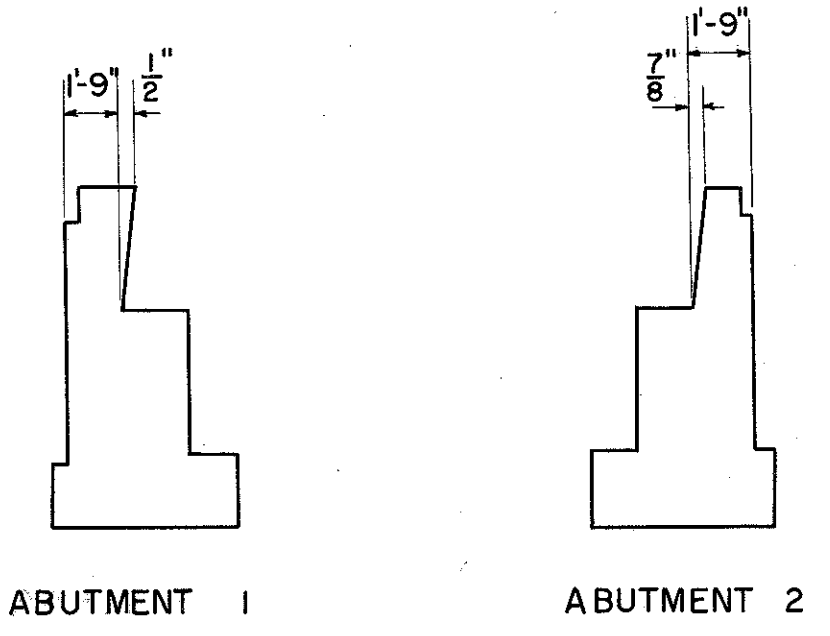


DETAIL RAILING END ANCHOR PLATE

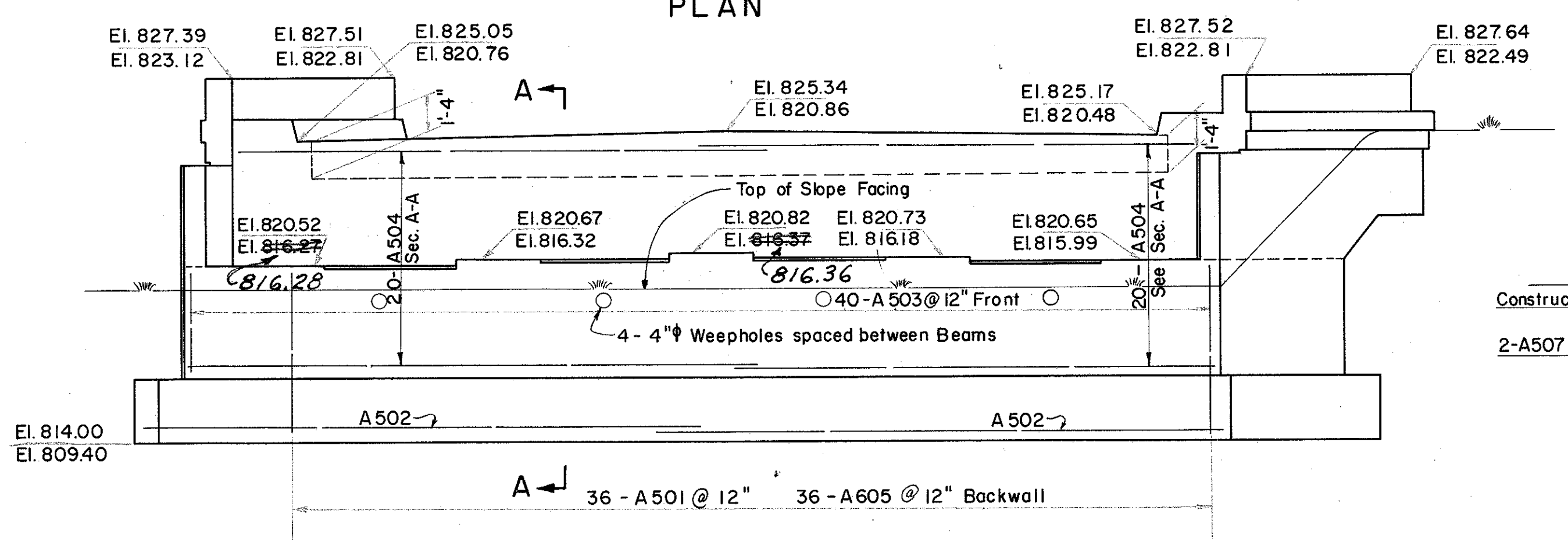
4 Required. Include with Item S-14 for Payment.



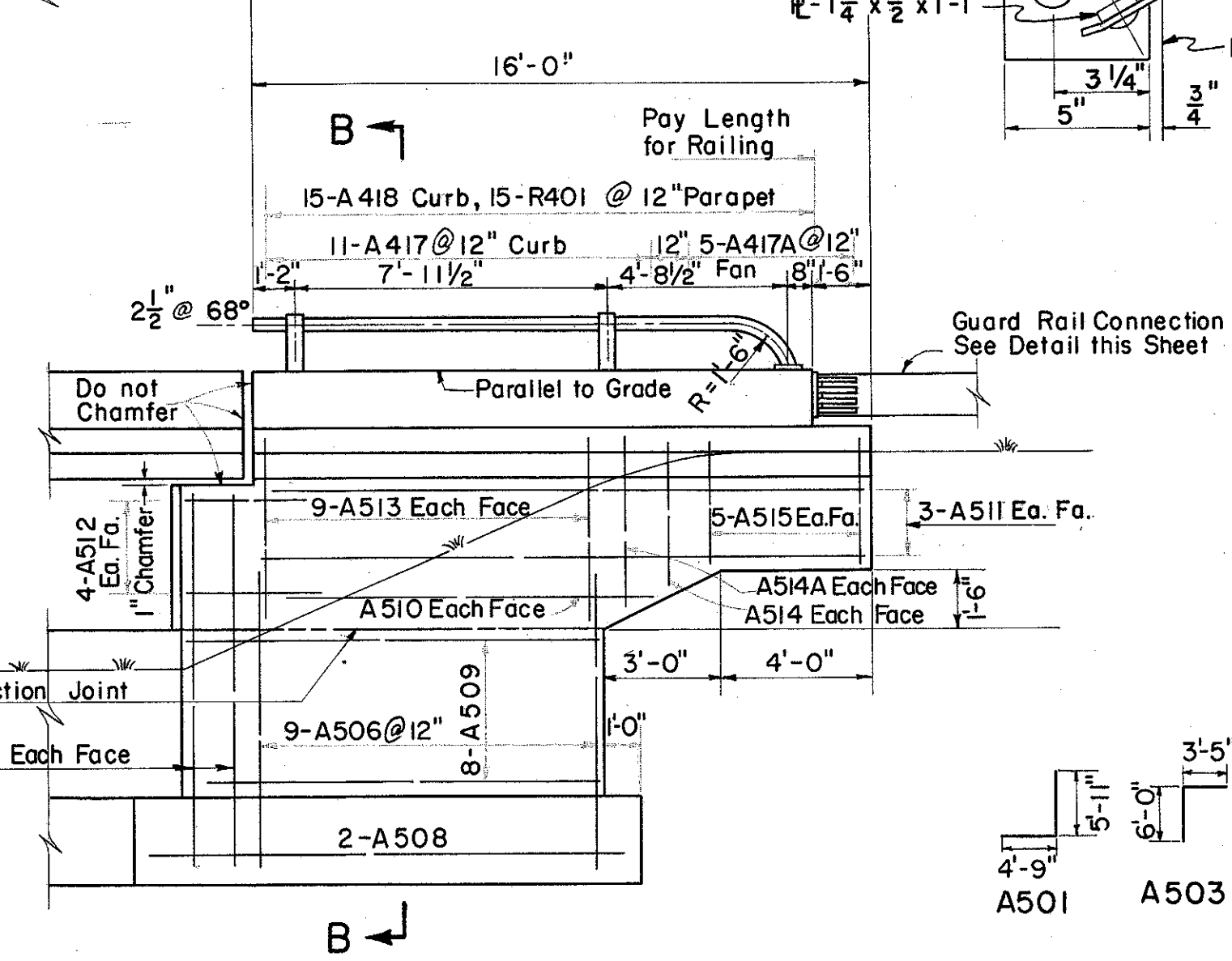
NOTE: Guard Rail End Connection Assembly shall be galvanized after welding.



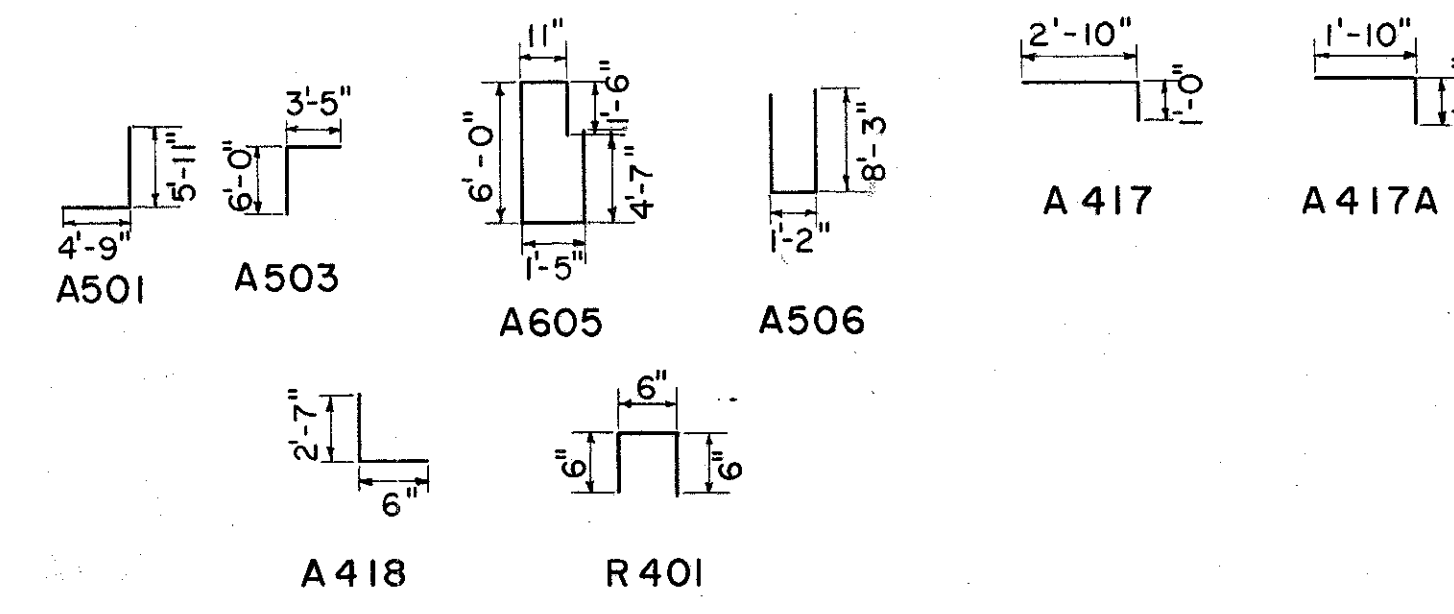
ABUTMENT 1
ABUTMENT 2
ABUTMENT BACKWALL SLOPE



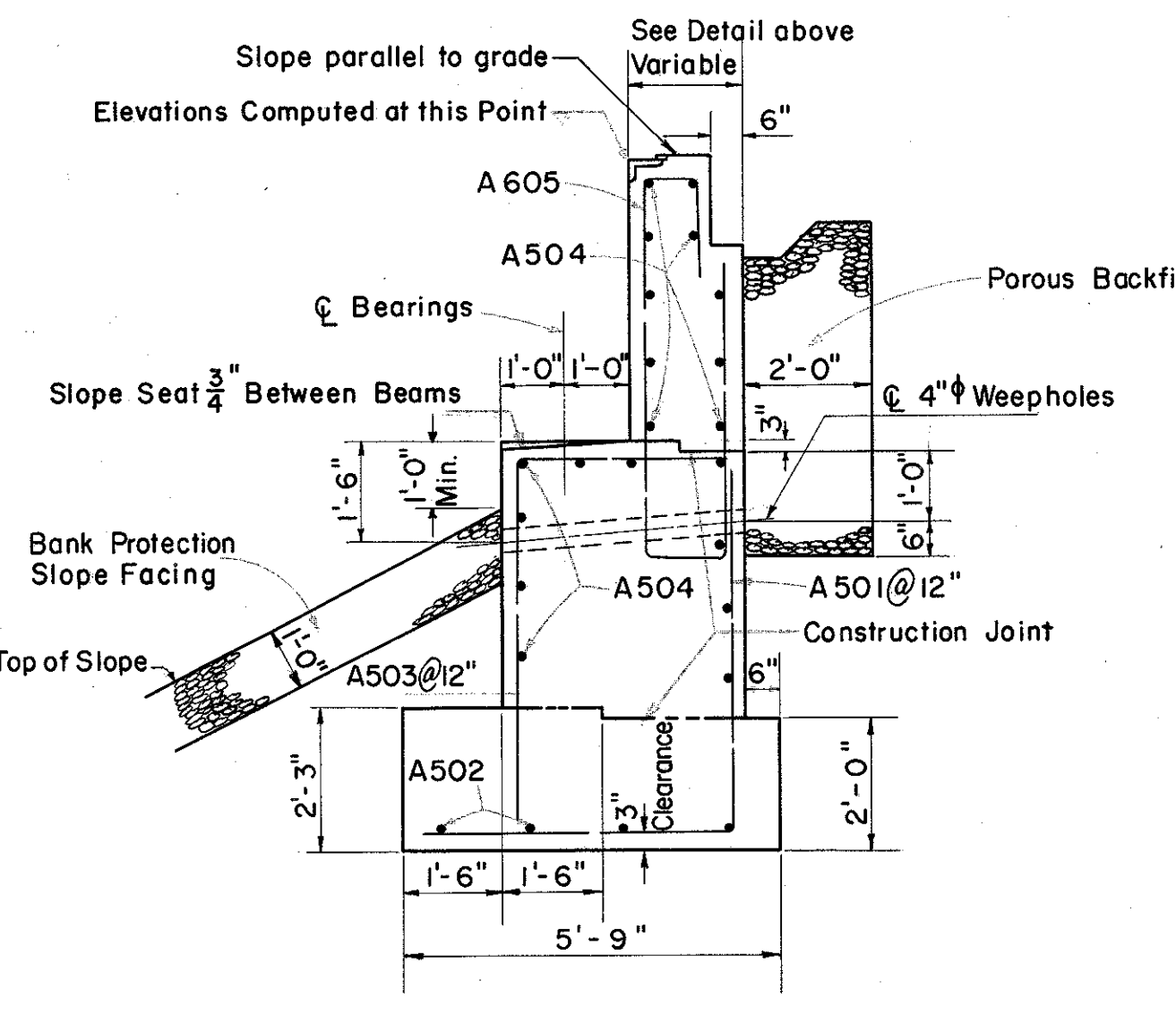
ELEVATION



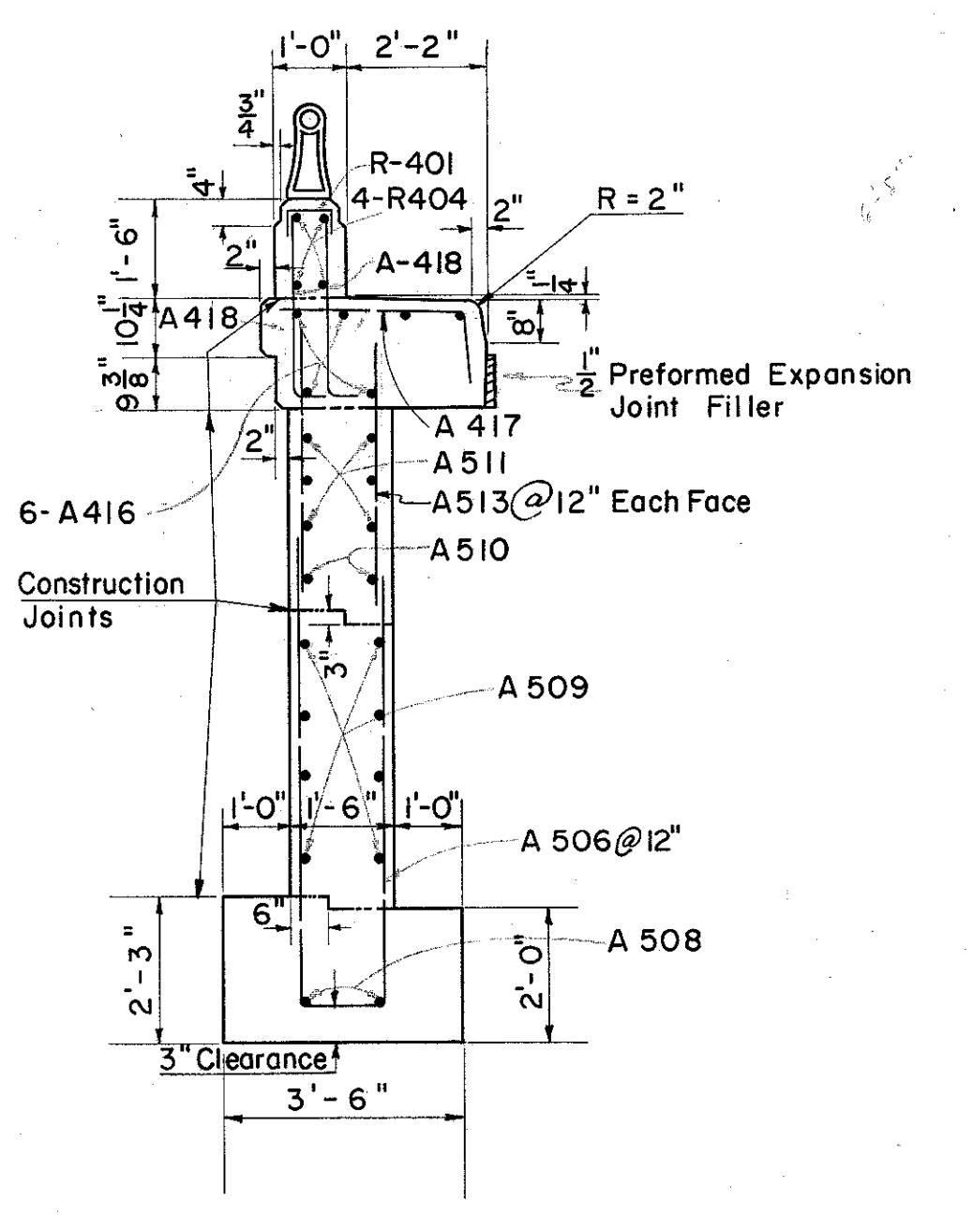
WING ELEVATION



NOTE: Elevations above dimension lines refer to Abutment 1, those below the dimension line refer to Abutment 2.



SECTION A-A



SECTION B-B

BAR LIST FOR TWO ABUTMENTS					
MARK	TOTAL	SIZE	LENGTH	TYPE	WEIGHT
A501	72	5	10'-6"	Bent	789
A502	16	5	21'-3"	Str.	355
A503	80	5	9'-3"	Bent	772
A504	80	5	20'-6"	Str.	1711
A605	72	6	13'-9"	Bent	1487
A506	36	5	17'-5"	Bent	654
A507	10	5	9'-9"	Str.	102
A508	8	5	13'-0"	Str.	108
A509	32	5	10'-6"	Str.	350
A510	8	5	10'-0"	Str.	83
A511	24	5	15'-6"	Str.	388
A512	32	5	4'-0"	Str.	134
A513	72	5	4'-9"	Str.	357
A514	8	5	4'-3"	Str.	35
A514A	8	5	3'-9"	Str.	31
A515	40	5	3'-3"	Str.	136
A416	24	4	15'-6"	Str.	248
A417	44	4	3'-9"	Bent	110
A417A	20	4	2'-9"	Bent	37
A418	120	4	3'-0"	Bent	240
R401	60	4	1'-6"	Bent	
R404	16	4	14'-0"	Str.	
TOTAL					8127

Include with Railing for Payment (Item S-14)

PROCEDURE: The embankment shall be placed and compacted up to the finished spill-thru slope and to the level of the subgrade for a distance of 200 feet back of the abutments, after which excavation shall be made for the abutment.
CLEARANCE of reinforcing steel from face of concrete shall be 2" unless otherwise shown.

POROUS BACKFILL, 2 feet thick, full length of abutment and wings shall extend up to the underside of the Approach Slab or to the finished ground surface.
ALL ABUTMENT CONCRETE shall be Class "E" except for Railing Parapet which shall be Class "C"
Maximum Foundation Pressure = 1.5Tons per sq. ft.

This sheet SUPPLEMENTED by sheet 264 A dated 3-25-59

SEC. C-35 FED. AID PROJ. NO. ACI-1103 (29)

PREPARED BY
CAPITOL ENGINEERING ASSOCIATES, DILLSBURG, PA.
FOR

STATE OF OHIO
DEPARTMENT OF HIGHWAYS
DIVISION OF DESIGN AND CONSTRUCTION
BUREAU OF BRIDGES

ABUTMENTS
BRIDGE NO. LAK-1-2588
S.R. 1 UNDER S.R. 528
LAKE COUNTY

STA. 1048 + 74.65

DESIGNED	DRAWN	TRACED	CHECKED	REVISED DATE	REVISED
H.W.		F.D.T.	T.K.	11-24-58 3-25-59	