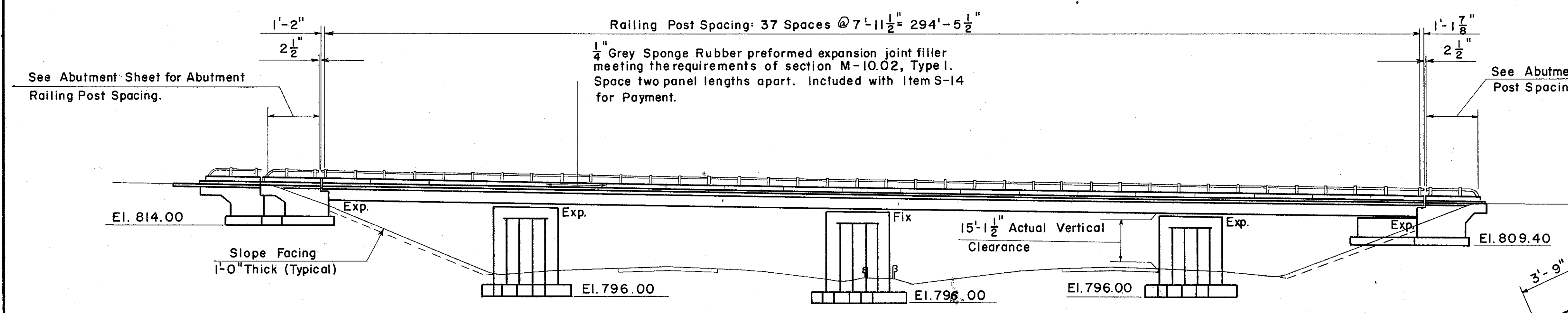
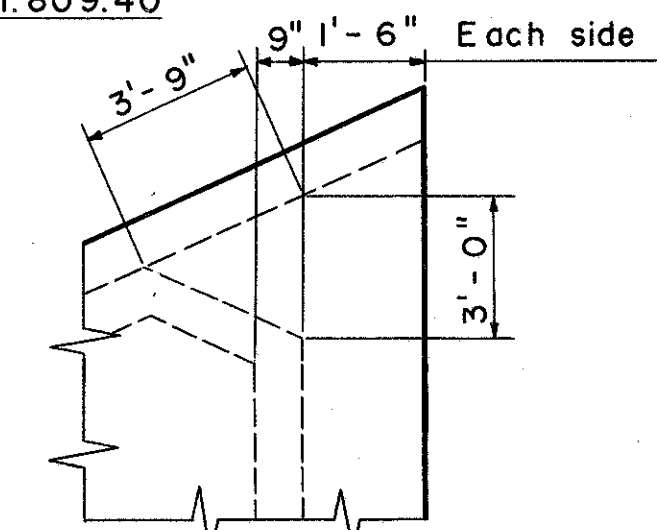


GENERAL PLAN

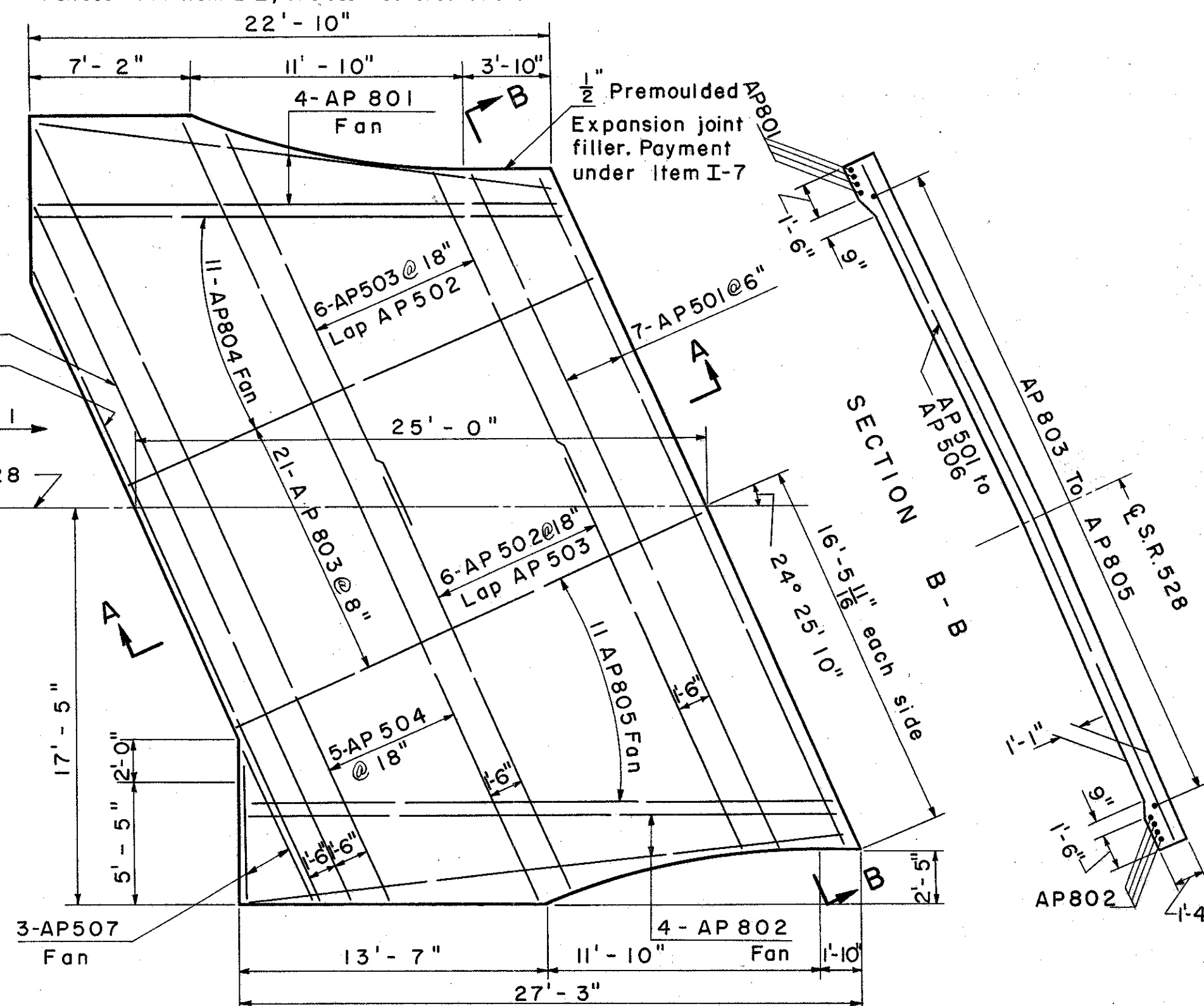


ELEVATION

All Reinforcing steel shall have 2" of cover from all surfaces except as otherwise shown.



DETAIL OF FILLET
(Acute corner of Approach Slab)



APPROACH SLAB

MARK	NO.	SIZE	LENGTH	TYPE	WEIGHT
RE 401	1	4	5'-3"	Str.	
RE 502	2	5	5'-7"	Str.	
RE 603	2	6	5'-11"	Str.	
RE 704	1	7	6'-2"	Str.	
RE 905	2	9	6'-10"	Str.	
RE 1106	2	11	7'-7"	Str.	
RESP401	1	4	5'-3"	Str.	

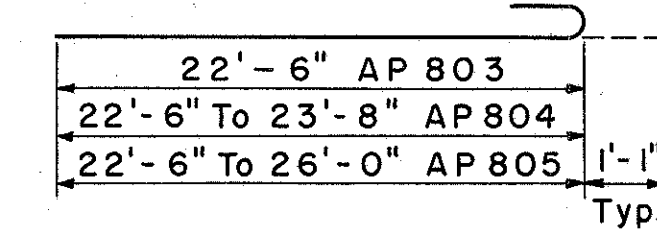
REPLACEMENT BARS
If reinforcement bars are fabricated from stock which has previously been tested and approved by the Ohio Highway Testing Laboratory, test sample as provided in section S-4.02 need not be furnished and replacement bars will not be required.



ITEM	TOTAL	UNIT	DESCRIPTION	ESTIMATED QUANTITIES		
				SUPERSTR.	ABUT.	PIERS GENERAL
E-2	579	Cu. Yds.	Unclassified Excavation		377	202
S-1	341	Cu. Yds.	Class "C" Concrete, Superstructure	341		
S-1	80	Cu. Yds.	Class "C" Concrete, Pier Caps & Columns			80
S-1	100	Cu. Yds.	Class "E" Concrete, Abutments above Footings		100	
S-1	127	Cu. Yds.	Class "E" Concrete, Footings		47	80
S-4	116,341	Lbs.	Reinforcing Steel	87,027	8127	21,187
S-7	378,524	Lbs.	Structural Steel	378,524		
S-8	378,524	Lbs.	Field Painting of Structural Steel	378,524		
S-14	652	Lin. Ft.	Railing (Aluminum Rail & Supports, Concrete Parapet)	594	58	
S-29	46	Cu. Yds.	Porous Backfill		46	
S-29	132	Cu. Yds.	Slope Facing (S 29.05 Type)			132

MARK	NO.	LENGTH	WEIGHT	SHAPE	REMARKS
AP 501	14	32'-9"		Str.	
AP 502	12	20'-0"		Str.	
AP 503	12	12'-10" to 17'-10"		Str.	increments of 10"
AP 504	10	37'-8"		Str.	
AP 505	2	34'-3"		Str.	
AP 506	2	30'-0"		Str.	
AP 507	6	7'-0"		Str.	
AP 801	8	23'-0"		Str.	
AP 802	8	26'-3"		Str.	
AP 803	42	23'-7"		Bent	
AP 804	22	23'-7" to 24'-9"		Bent	increments of 1 1/4"
AP 805	22	23'-7" to 27'-1"		Bent	increments of 3 7/8"

NOTE:
Approach Slab to be Class "C" Concrete. Reinforcing steel is included in Reinforced Concrete Approach Slab item I-7 and is not paid for separately.



PREPARED BY
CAPITOL ENGINEERING ASSOCIATES, DILLSBURG, PA.
FOR
STATE OF OHIO
DEPARTMENT OF HIGHWAYS

GENERAL PLAN & ELEVATION
BRIDGE NO. LAK-1-2588
S.R.1 UNDER S.R. 528
LAKE COUNTY
STA. 1048+74.65

DESIGNED	DRAWN	TRACED	CHECKED	REVISED	DATE	REVISED
H.N.		F.D.T.	T.K.			