

(2) APPROACH SLAB BAR LIST

Mark	No.	Length	Type	A	B
B501	16	42'0"	Str.		
B502	2	41'0"	Str.		
B503	4	41'9"	Str.		
B504	2	42'9"	Str.		
B505	2	44'0"	Str.		
B506	2	45'9"	Str.		
B507	2	46'8"	Str.		
B508	2	43'9"	Str.		
B801	106	23'7"	8	11"	24'6"
B802	4	23'10"	8	11"	22'9"
B803	2	11'7"	8	11"	10'6"
B804	2	7'7"	8	11"	6'0"
B805	2	4'10"	8	11"	3'9"
B806	2	3'7"	8	11"	2'6"
B807	2	2'1"	8	11"	1'0"
B808	4	26'1"	8	11"	25'0"
B809	2	18'1"	8	11"	17'0"
B810	2	15'1"	8	11"	14'0"
B811	2	13'1"	8	11"	12'0"
B812	2	11'1"	8	11"	10'0"
B813	2	10'1"	8	11"	9'0"
B814	2	9'1"	8	11"	8'0"

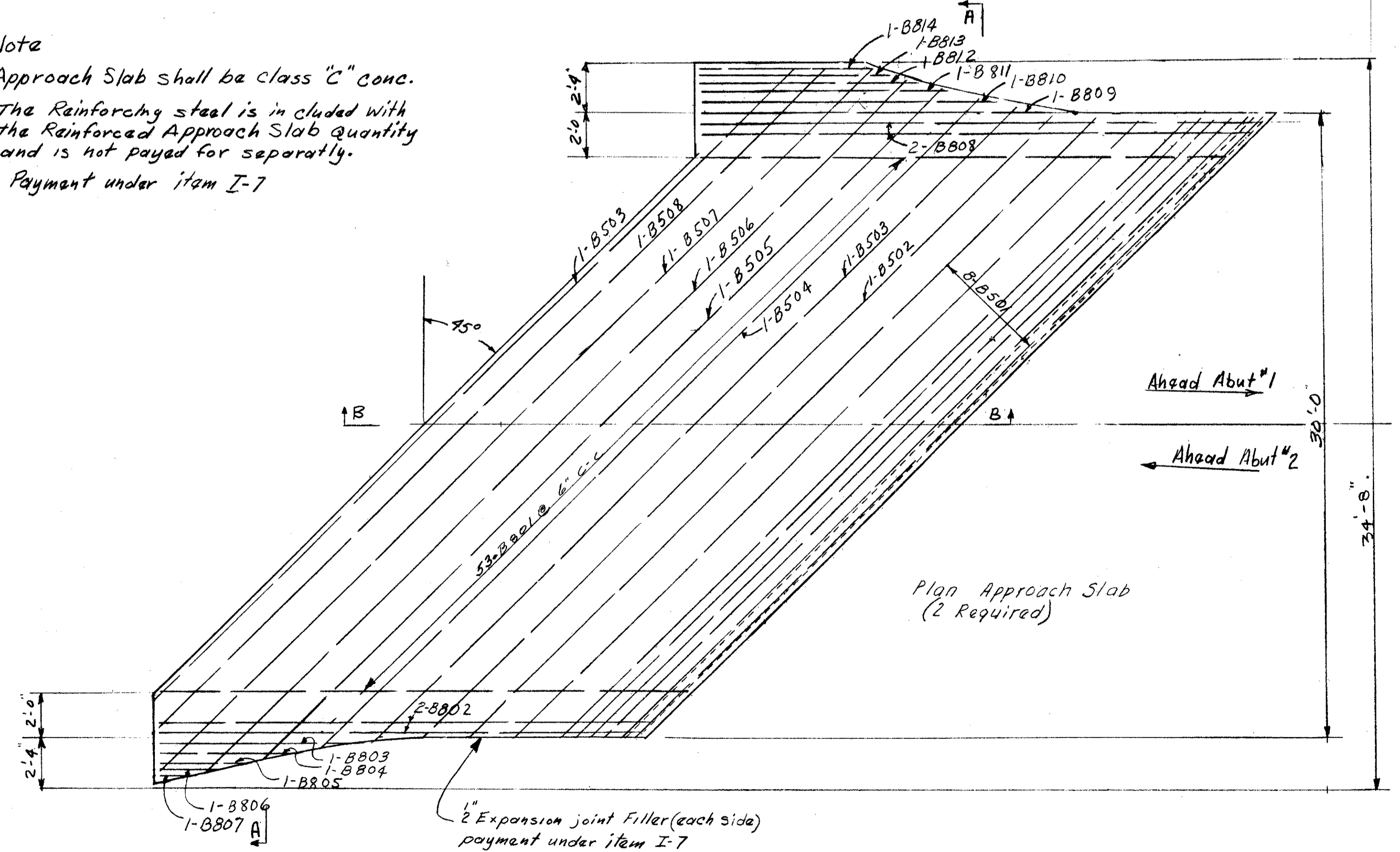
PIER BAR LIST

MARK	No.1	No.2	No.3	TOTAL	SIZE	LENGTH	TYPE	A	B	WEIGHT
P501	4	4	4	12	23'6"	Str.	-	-	294	
P502	78	78	78	234	6'10"	2	2'-3"	2'-6"	1668	
P901	24	-	24	48	5'10"	1	5'-6"	7'-8"	952	
P902	24	-	24	48	19'-4"	Str.	-	-	1578	
P903	-	-	24	24	14'-8"	Str.	-	-	1197	
P904	6	-	6	12	10'-0"	Str.	-	-	408	
P1001	4	4	4	12	16'-9"	Str.	-	-	865	
P1002	4	4	4	12	30'-11"	Str.	-	-	1596	
P801	96	96	96	288	11'-8"	6	1'-1"	9'-6"	8971	
P1102	24	56	24	104	5'-11"	1	5'-6"	9'-8"	3268	
P1103	-	56	-	56	17'-2"	Str.	-	-	5106	
P1104	24	-	24	24	19'-4"	Str.	-	-	2465	
P1105	-	24	24	24	14'-8"	Str.	-	-	1870	
P1106	-	6	6	6	10'-0"	Str.	-	-	319	
P1107	8	8	8	24	23'-6"	Str.	-	-	2997	
P1108	4	4	4	12	12'-9"	7	4'-0"	4'-9"	813	
P1109	12	12	12	36	9'-2"	1	3'-6"	6'-0"	1753	
SP401	4	4	4	12	11'-2"	4 1/2	33	32"	862	
SP402	4	4	4	12	13'-8"	4 1/2	40	32"	1045	
SP403	4	4	4	12	15'-10"	4 1/2	45	32"	1181	
Total 39,208										

ABUTMENT BAR LIST

MARK	No.1	No.2	TOTAL	LENGTH	TYPE	A	B	C	D	WEIGHT
A501	46	46	92	10'-2"	1	5'8"	4'7"	-	-	976
A502	18	18	36	32'-0"	Str.					1202
A503	18	18	36	19'-0"	Str.					714
A504	26	26	52	9'-9"	1	7'-8"	2'-2"	-	-	529
A505	4	4	8	16'-2"	Str.					135
A506	4	4	8	15'-4"	Str.					128
A507	6	-	6	9'-7"	Str.					60
A508	-	6	6	10'-5"	Str.					65
A509	6	-	6	9'-9"	Str.					61
A510	-	6	6	9'-6"	Str.					60
A511	8	8	16	4'-4"	2	4'-0"	6"	-	-	72
A512	26	26	52	7'-0"	Str.					380
A513	4	4	8	19'-10"	Str.					124
A514	4	4	8	12'-2"	Str.					102
A515	1	1	2	17'-0"	Str.					36
A516	1	1	2	13'-4"	Str.					29
A517	3	3	6	21'-10"	Str.					137
A518	3	3	6	19'-2"	Str.					120
A519	8	8	16	3'-6"	Str.					58
A520	8	8	16	2'-8"	Str.					45
A521	16	16	32	7'-6"	4	1'-6"	3'-2"	3'-0"	-	232
A522	26	26	52	3'-0"	4	1'-6"	2'-9"	2'-7"	-	196
A601	46	46	92	11'-2"	1	5'8"	5'-7"	-	-	1593
A602	46	46	92	30'-0"	3	8'-1"	1'-5"	6'-4"	11"	4196
A603	26	26	52	10'-6"	1	8'-0"	2'-8"	-	-	820
A604	4	4	8	16'-2"	Str.					194
A605	4	4	8	15'-4"	Str.					184
A606	26	26	52	7'-0"	1	6'-8"	6"	-	-	547
A607	4	4	8	14'-10"	Str.					178
A608	4	4	8	12'-2"	Str.					146
A609	1	1	2	17'-0"	Str.					51
A610	1	1	2	13'-4"	Str.					40
A611	3	3	6	21'-10"	Str.					177
A612	3	3	6	19'-2"	Str.					173
A613	3	3	6	19'-3"	Str.					174
A614	2	2	4	19'-6"	Str.					117
A615	3	3	6	20'-10"	Str.					188
A616	2	2	4	21'-0"	Str.					126
A701	10	10	20	28'-8"	Str.					1172
A702	1	1	2	11'-8"	6	10"	10'-0"	-	-	48
A703	1	1	2	11'-1"	6	10"	9'-5"	-	-	45
A704	25	25	50	6'-4"	2	1'-6"	3'-8"	-	-	647
A705	3	3	6	8'-8"	6	10"	7'-0"	-	-	106
A706	4	4	8	6'-10"	6	10"	5'-2"	-	-	112
A707	4	4	8	17'-2"	Str.					281
A708	4	4	8	16'-9"	Str.					274
Total 17,101										
R501	26	26	52	1'-4"	2	6"	6"	-	-	include with Rollity for Payment
R401	4	4	8	18'-3"	Str.					
R402	4	4	8	17'-6"	Str.					
RESP4	1	4	5'-3"	Bent						

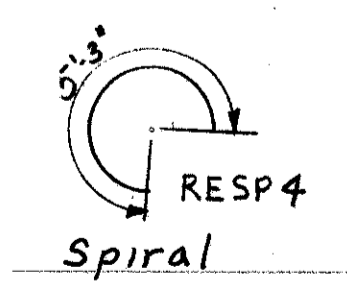
Note
Approach Slab shall be class "C" conc.
The Reinforcing steel is included with the Reinforced Approach Slab quantity and is not paid for separately.
Payment under item I-7



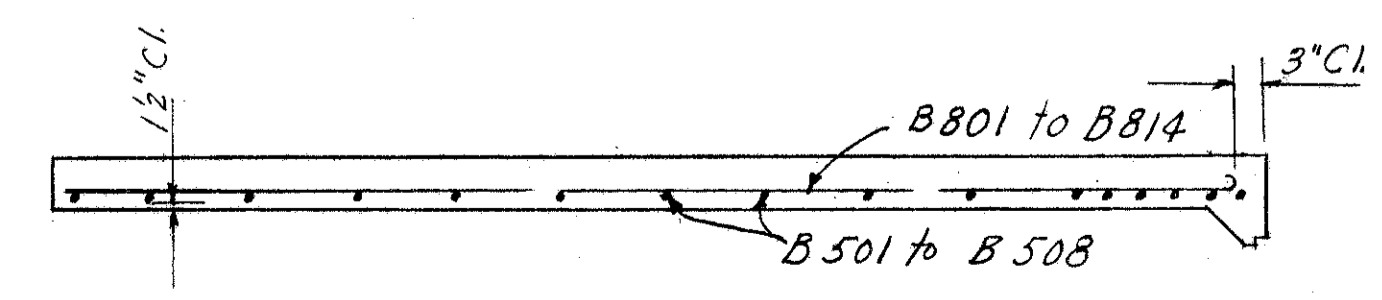
REPLACEMENT BARS

MARK	NO.	SIZE	LENGTH	TYPE	WEIGHT
RE400	2	4	5'-3"	Str.	
RE500	1	5	5'-7"	Str.	
RE600	3	6	5'-11"	Str.	
RE700	1	7	6'-3"	Str.	
RE800	1	8	6'-6"	Str.	
RE900	1	9	6'-10"	Str.	
RE1000	2	10	7'-3"	Str.	
RE1100	3	11	7'-7"	Str.	
RESP4	1	4	5'-3"	Bent	

REPLACEMENT BARS:
If reinforced bars are fabricated from stock which has previously been tested and approved by the Ohio Highway Testing Laboratory, test sample as provided in Section 3-4.02 need not be furnished and replacement bars will not be required.



All reinforcing steel shall have 2" of cover except as otherwise shown



SECTION B-B

SEC. C-35 FED. AID PROJ. NO ACI-1103(29)

PREPARED BY
CAPITOL ENGINEERING ASSOCIATES, DILLSBURG, PA
FOR

STATE OF OHIO
DEPARTMENT OF HIGHWAYS

APPROACH SLAB & BAR SCHEDULE
BRIDGE NO. LAK-1-2417
S.R.I UNDER RELOC. S.R. 307
LAKE COUNTY
STA. 957 + 30.00

DESIGNED	DRAWN	TRACED	CHECKED	REVISED	DATE	REVISION
G.S.W.	D.R.P.	B.S.	L.A.P.			7-9-58