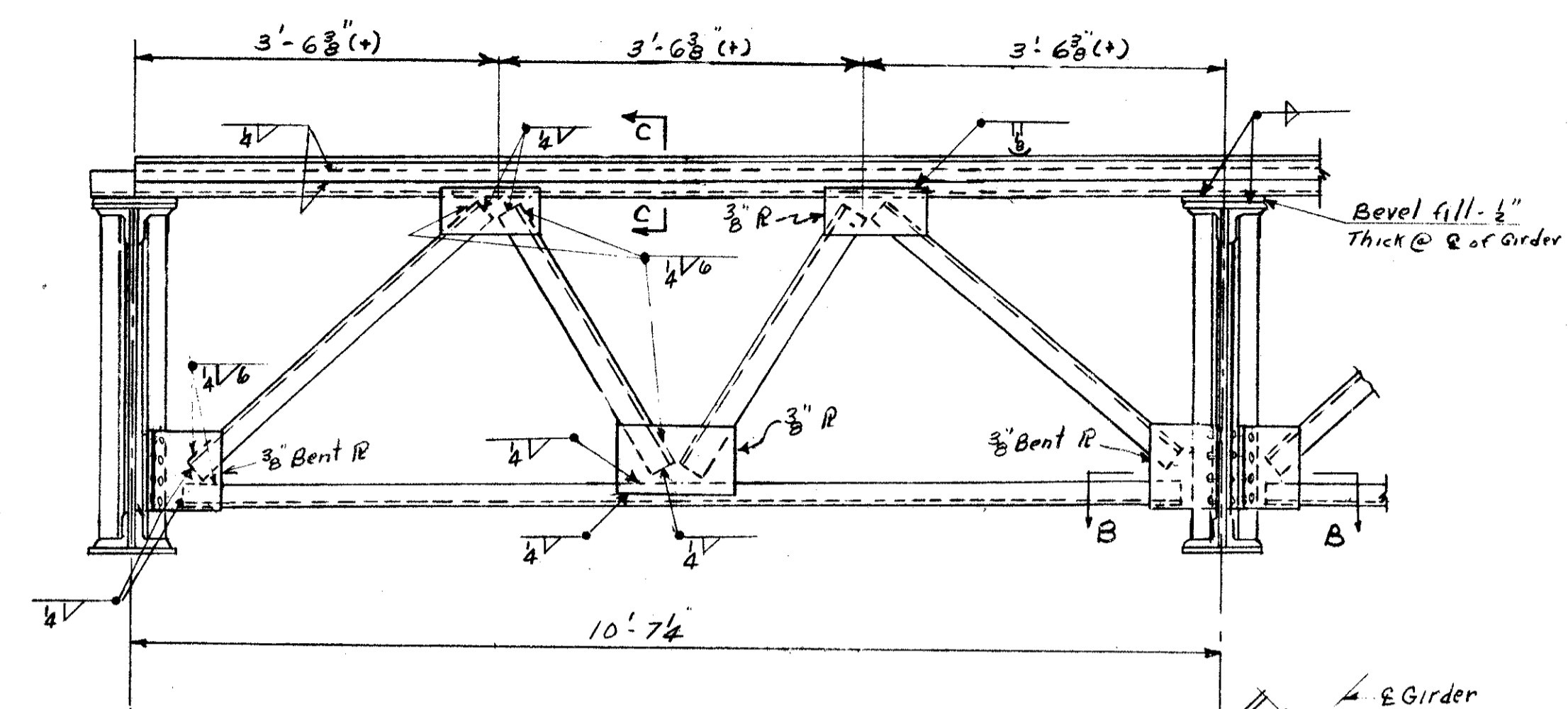
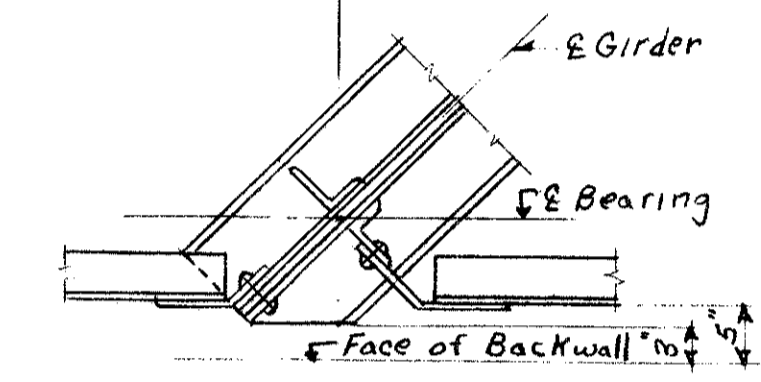


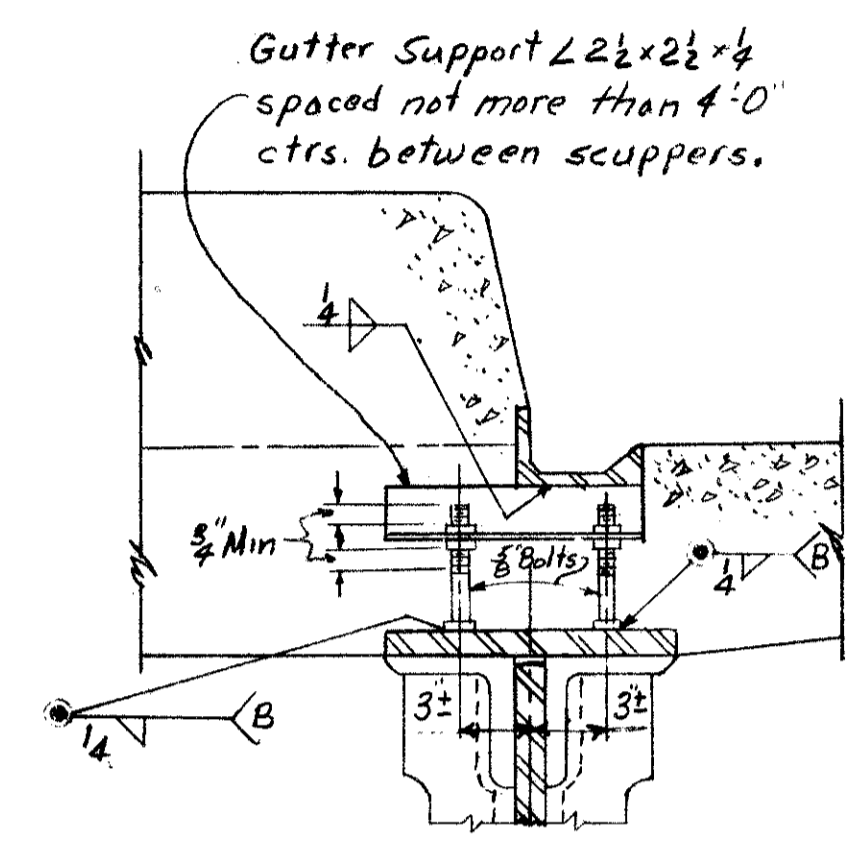
LAKE COUNTY
SEC. LAK-1-22.60



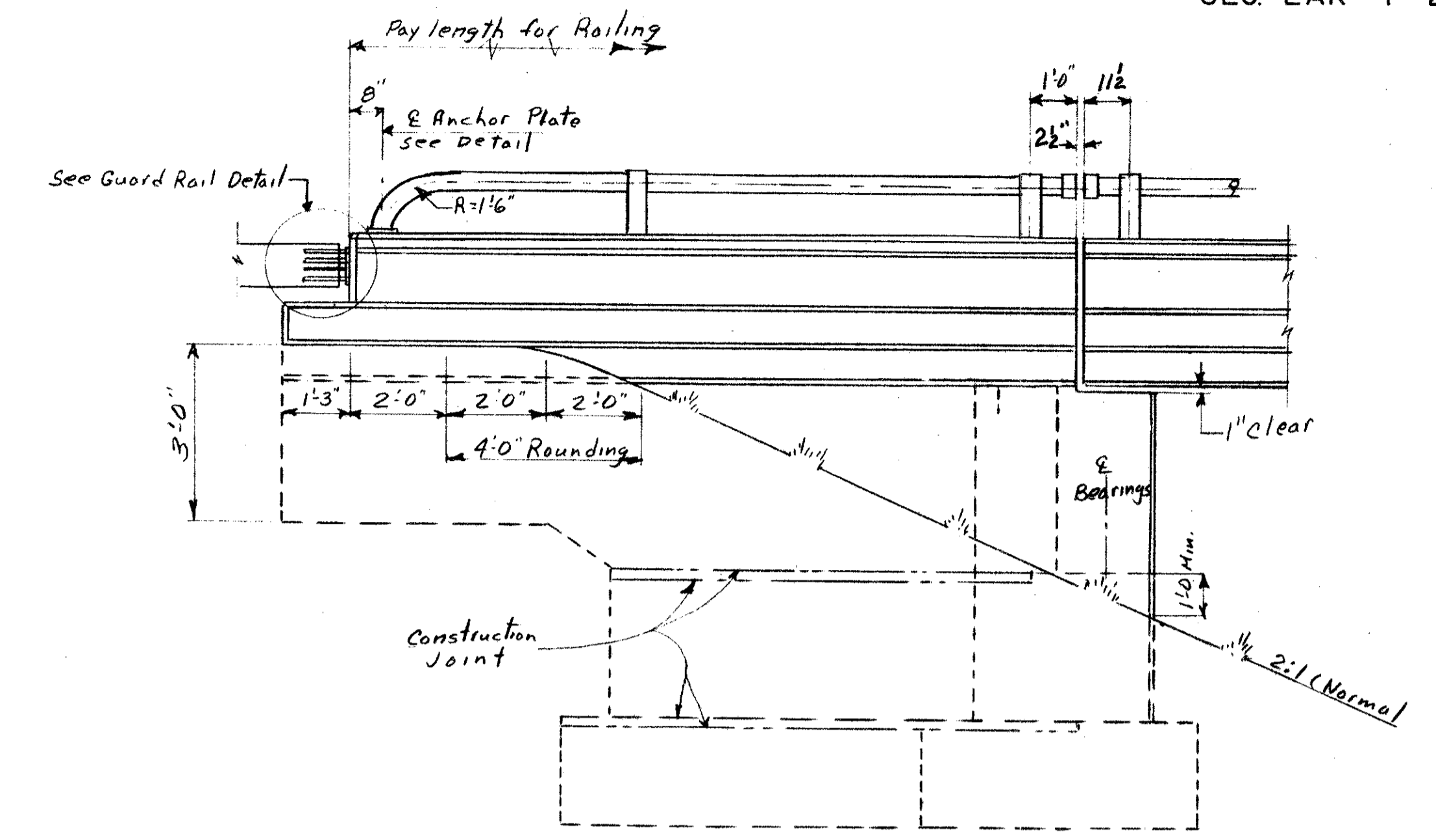
TYPICAL END CROSS FRAME



Section B-B

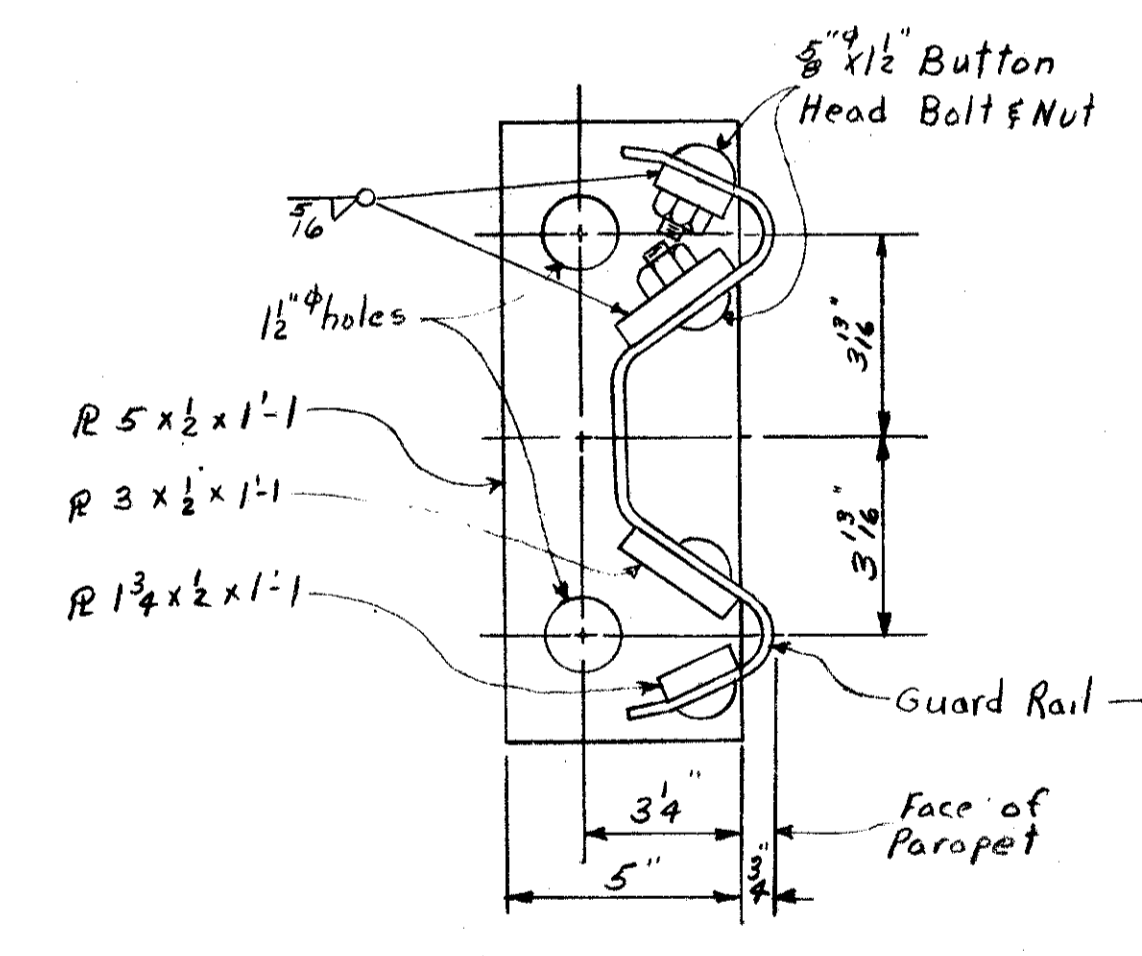


GUTTER SUPPORT DETAIL

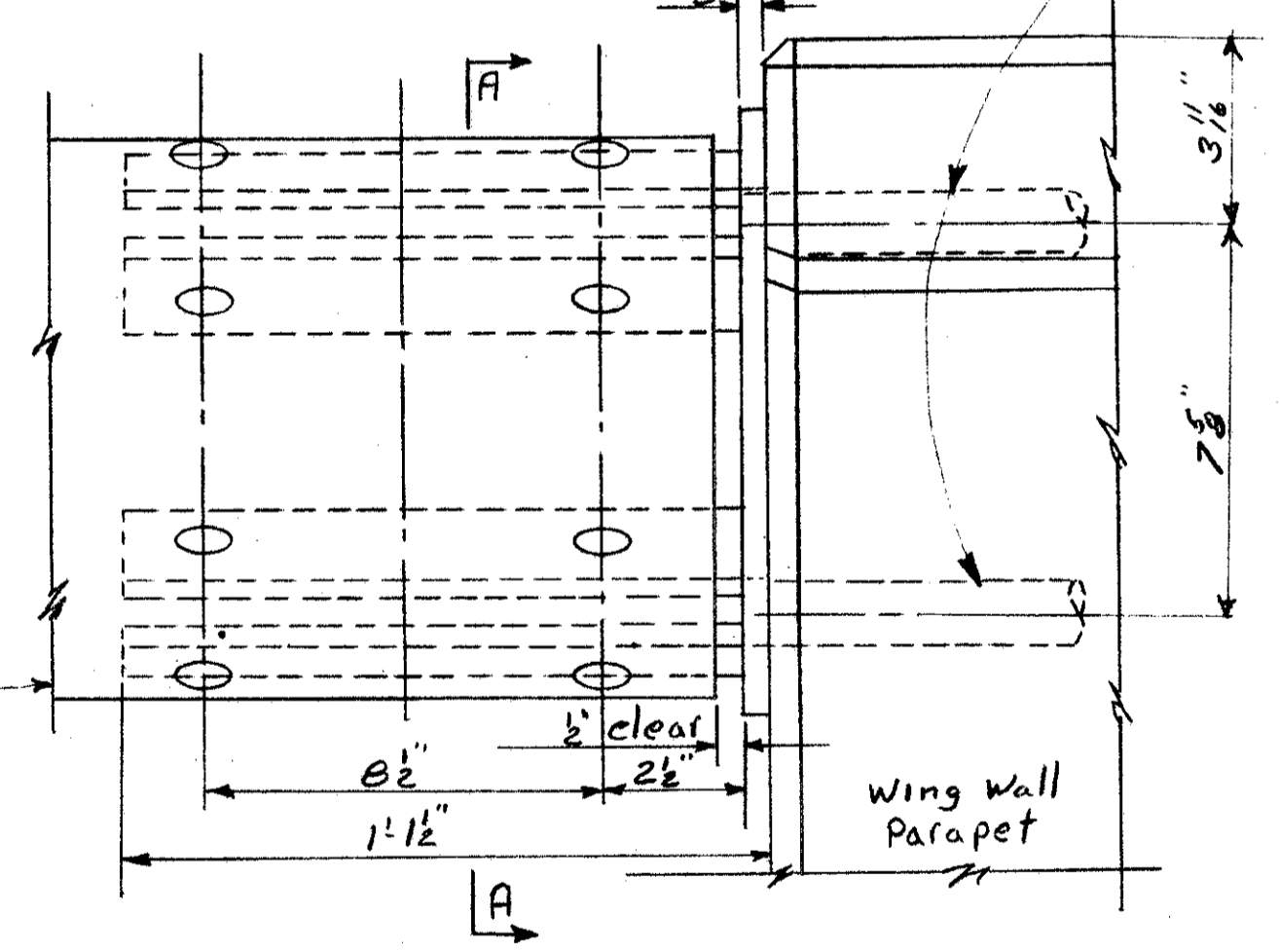


ABUTMENT ELEVATION
(Showing typical details)

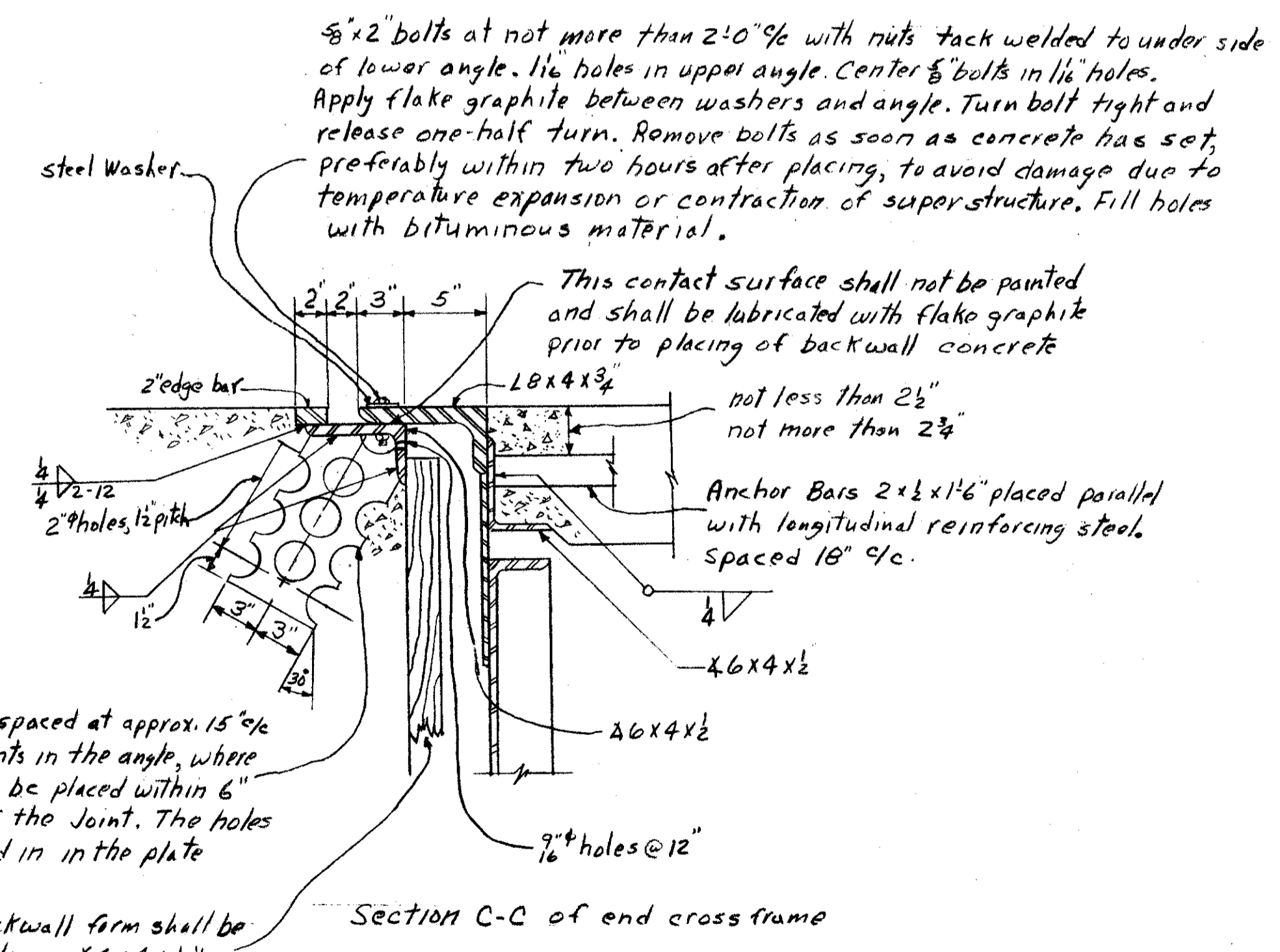
1 1/4" x 20" Galvanized Machine Bolts with Square Head & Nuts. Min. thread length 3". Bolts embedded 1'-6"



Section A-A

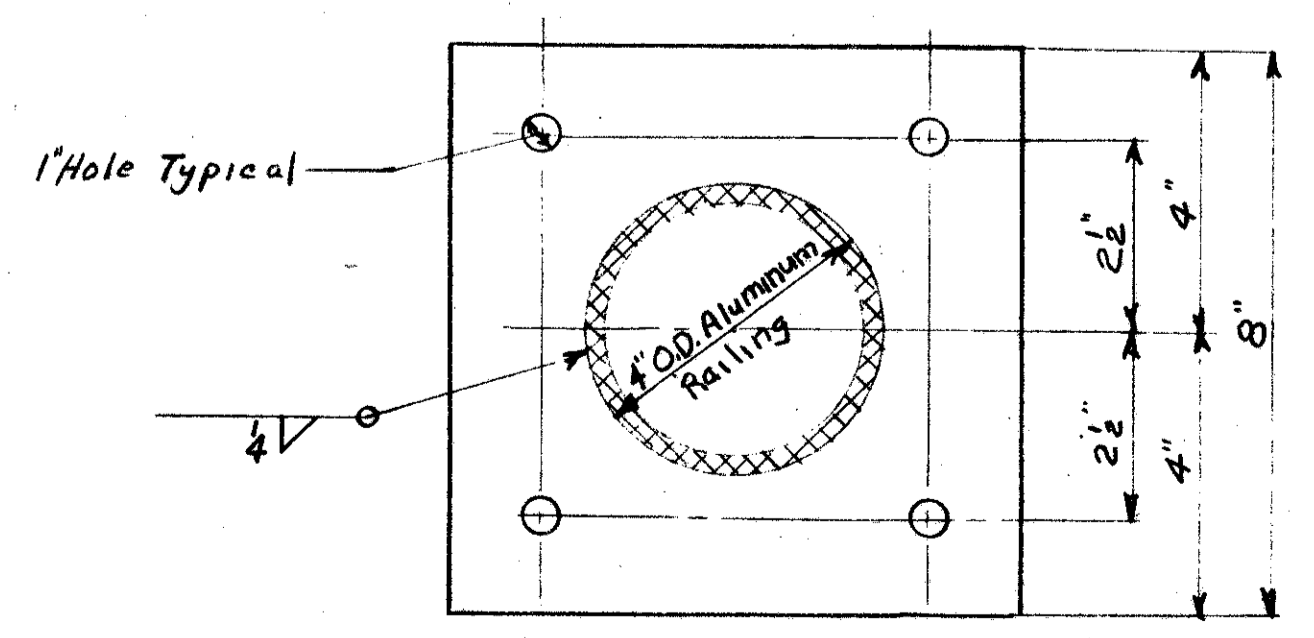


GUARD RAIL DETAIL
Guard Rail end connection assembly shall be galvanized after assembly

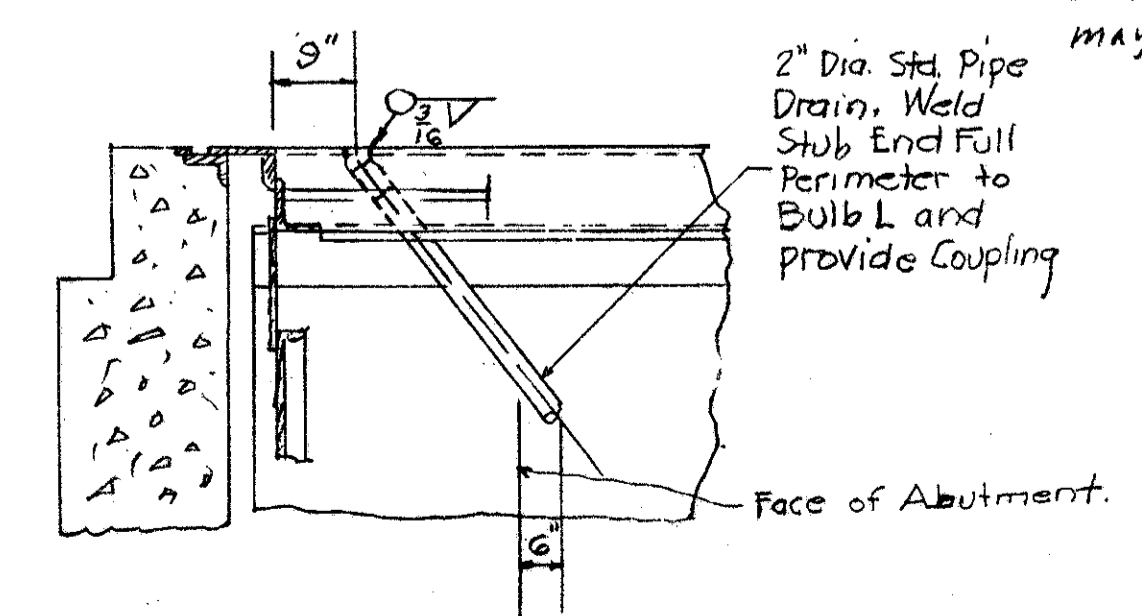


5/8" x 2" bolts at not more than 2'-0" @ c with nuts tack welded to under side of lower angle. 1 1/2" holes in upper angle. Center 5/8" bolts in 1 1/2" holes. Apply flake graphite between washers and angle. Turn bolt tight and release one-half turn. Remove bolts as soon as concrete has set, preferably within two hours after placing, to avoid damage due to temperature expansion or contraction of superstructure. Fill holes with bituminous material.

Welding of structural steel shall be class "A" except as otherwise shown. Welds shown as field welds may at the option of the contractor, be made in the shop.



ANCHOR PLATE FOR ABUTMENT RAILING
8" x 8" x 5/8" Aluminum Plate



SCUPPER DETAIL AT END DAM
FORWARD ABUTMENT ONLY

Top of backwall form shall be below 9/16" holes in 6" x 4" x 1/2"

Section C-C of end cross frame

SEC. C-35 FED. AID PROJ. NO. ACI-1103 (29)						
PREPARED BY CAPITOL ENGINEERING ASSOCIATES, DILLSBURG, PA. FOR STATE OF OHIO DEPARTMENT OF HIGHWAYS						
MISCELLANEOUS DETAILS BRIDGE NO. LAK-1-2417 S.R. 1 UNDER RELOC. S.R. 307 LAKE COUNTY STA. 957+30.00						
DESIGNED	DRAWN	TRACED	CHECKED	REVISED	DATE	REVISED
	TJB		JHT			