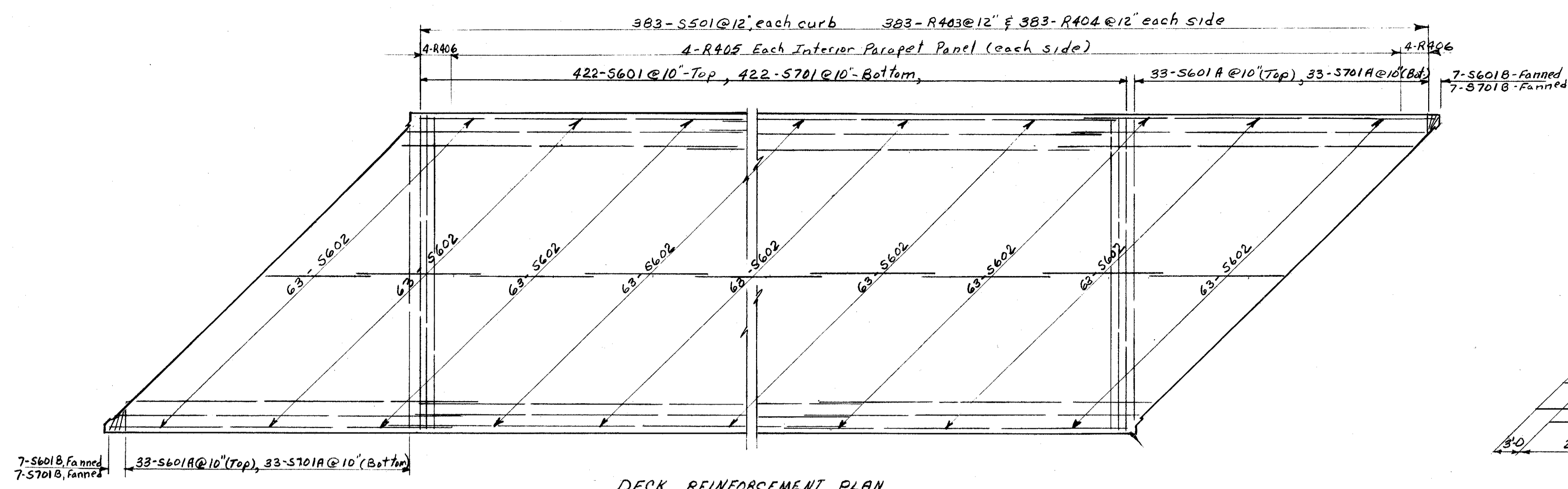


LAKE COUNTY  
SEC. LAK - I - 22.60



DECK REINFORCEMENT PLAN

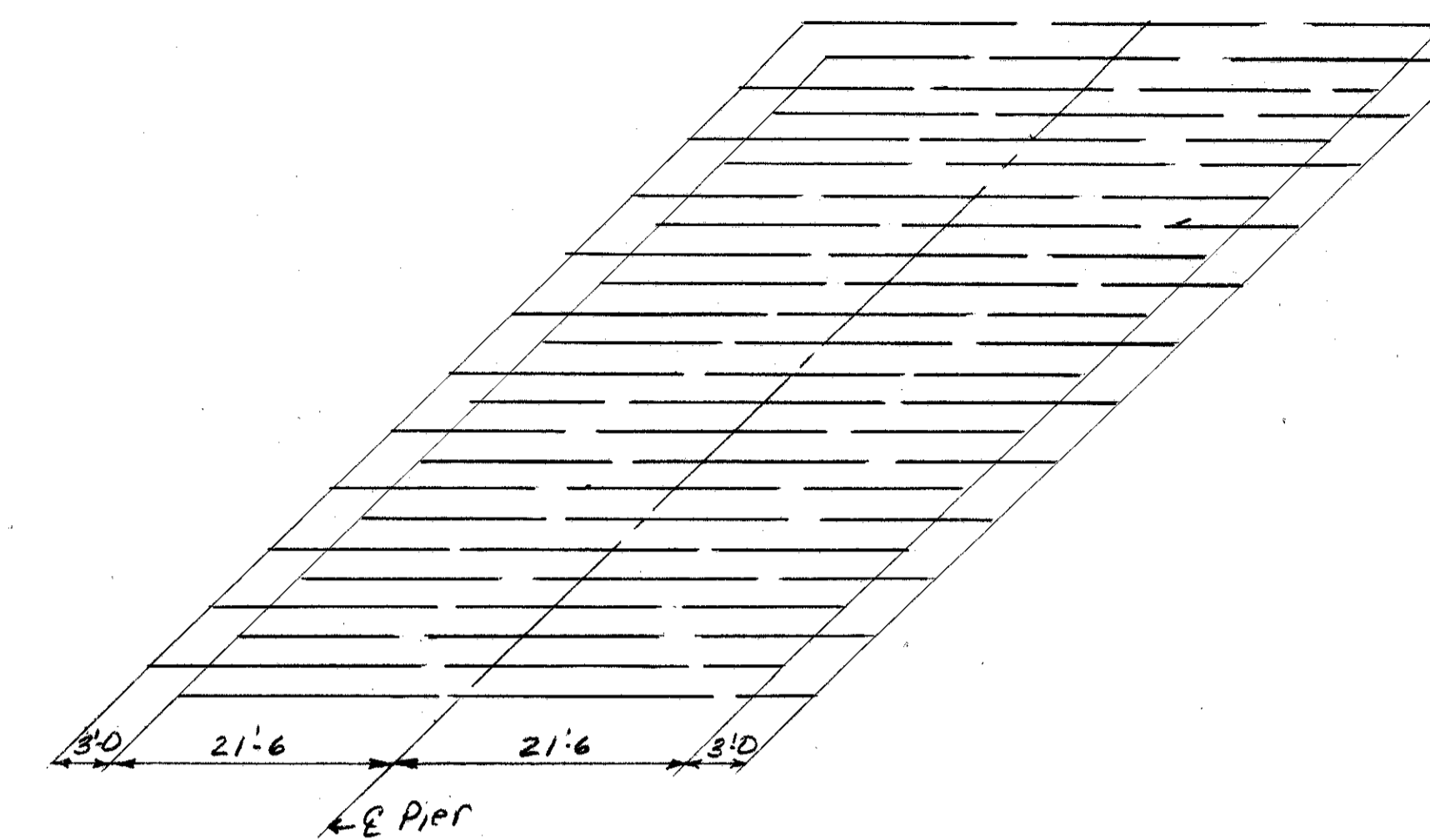
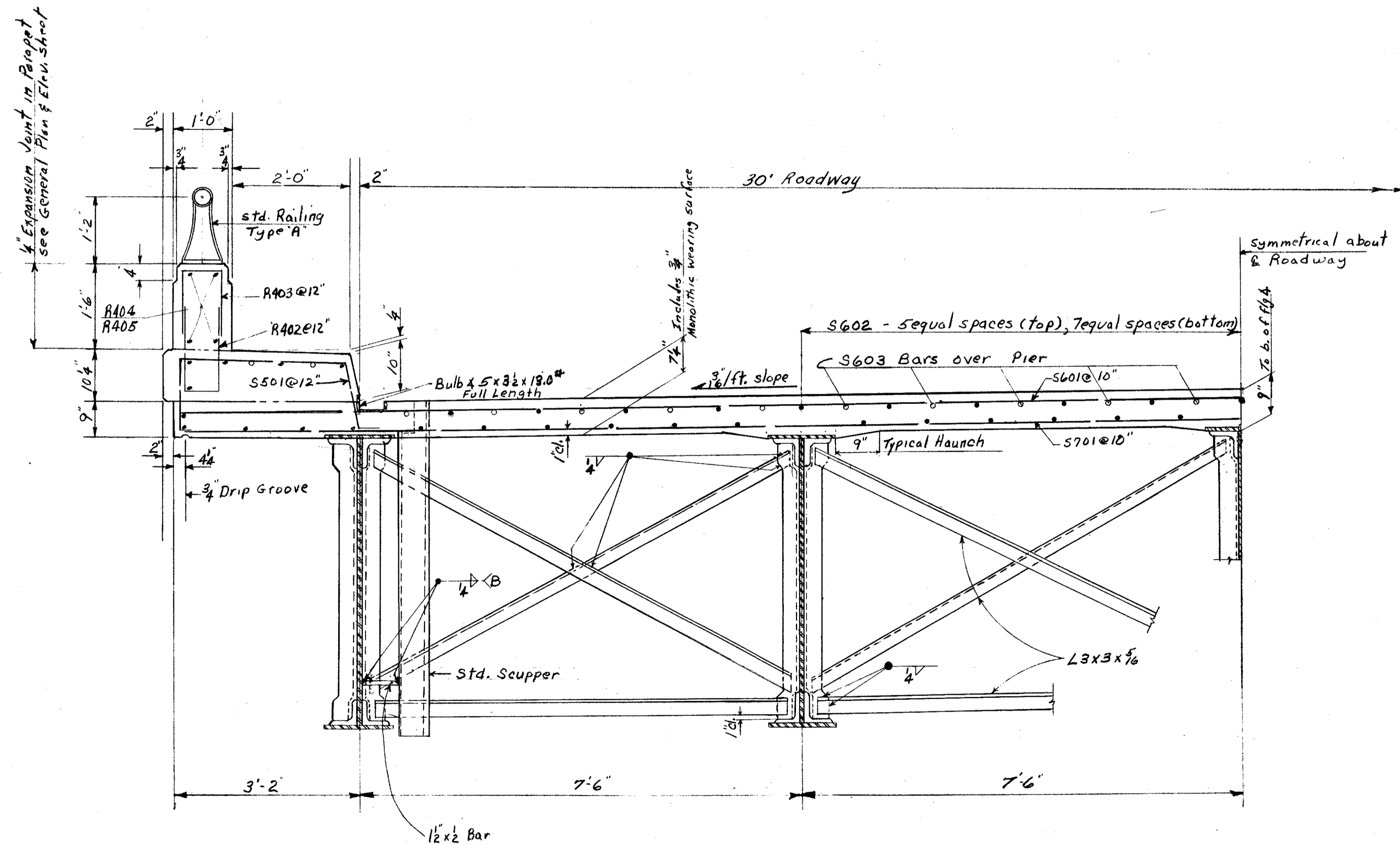


DIAGRAM SHOWING STAGGER OF S603 BARS OVER PIER  
24-S603 Each Pier



TYPICAL SECTION

Reference shall be made to Std. Drawing CSB-2-56 sheets 2 of 6, revised 3-1-58 for details of end dams, gutters, scuppers, pipe drains, and curb plates, also to Std. Drawing AR-1-57, revised 3-1-58 for aluminum railing Type "A" and concrete parapet details.

Concrete and reinforcing steel above parapet construction joint included with railing for payment.

All concrete Class "C"

SEC. C-35 FED. AID PROJ. NO. ACI-1103 (29)

PREPARED BY  
CAPITOL ENGINEERING ASSOCIATES, DILLSBURG, PA.  
FOR  
STATE OF OHIO  
DEPARTMENT OF HIGHWAYS

DECK DETAILS  
BRIDGE NO LAK-1-2417  
S.R.1 UNDER RELOC. S.R. 307  
LAKE COUNTY  
STA. 957+30.00

DESIGNED	DRAWN	TRACED	CHECKED	REVISOR	DATE	REVISED
McC	J.H.T.		P			