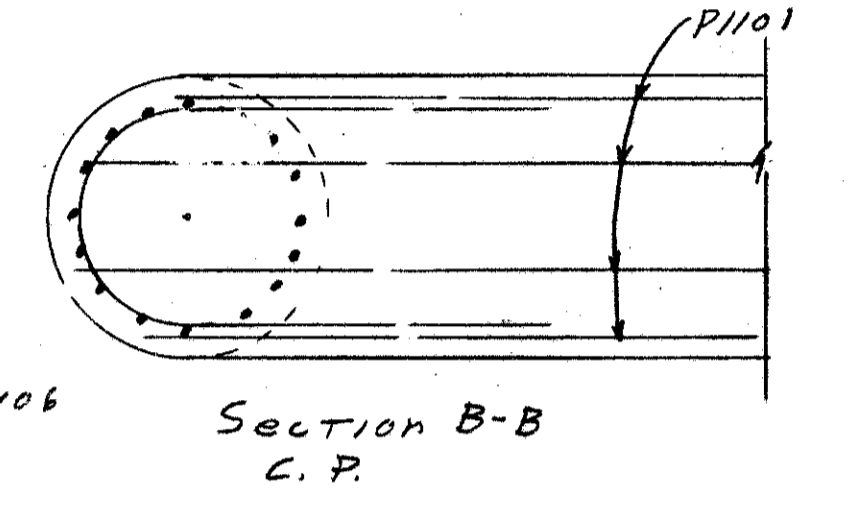
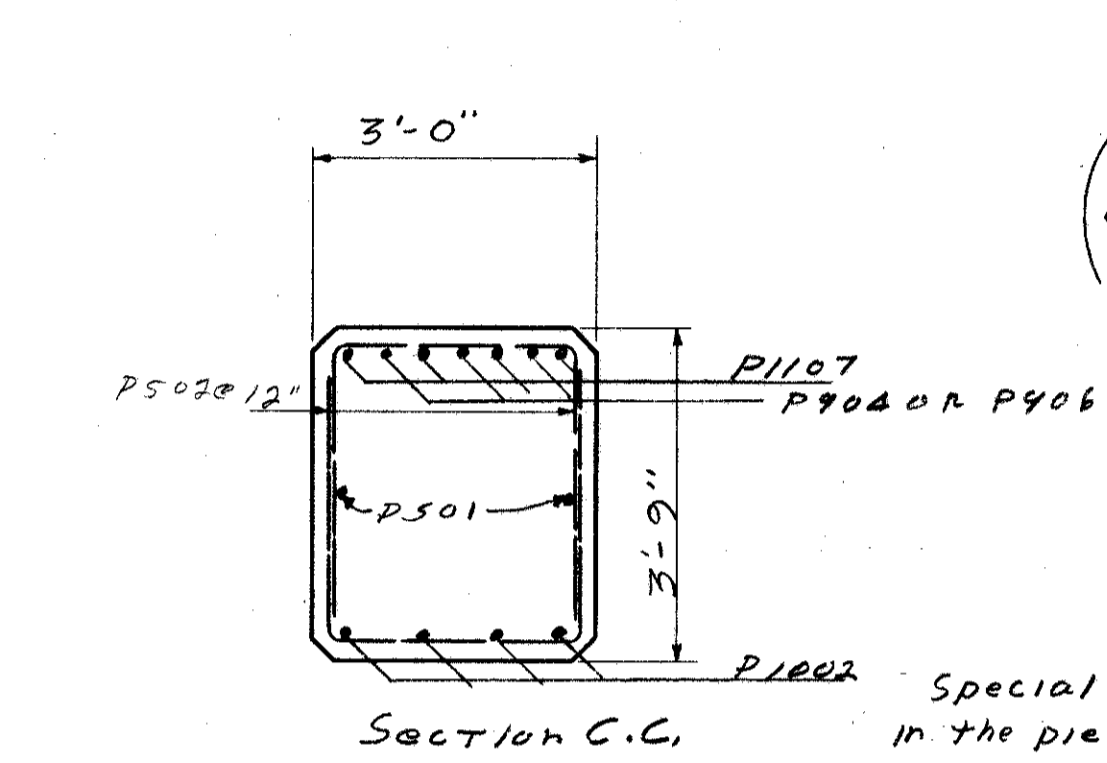
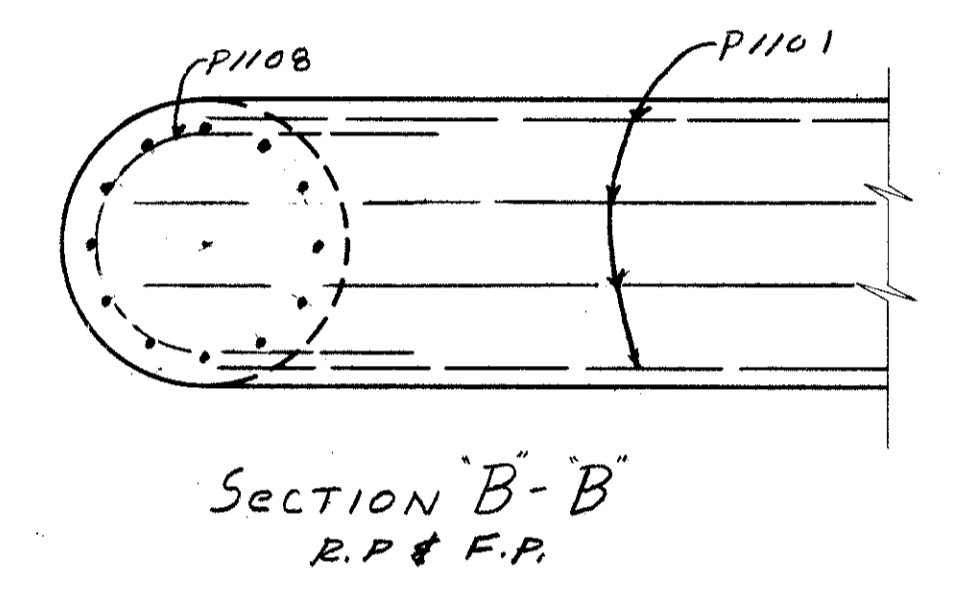
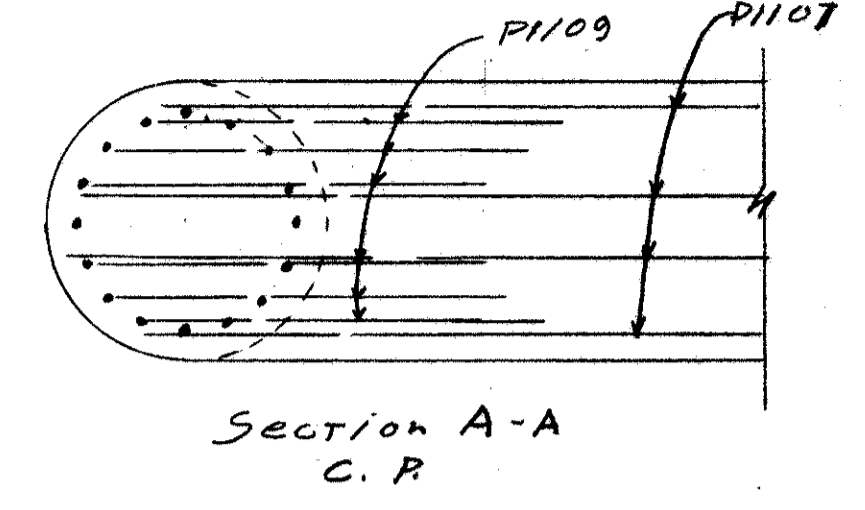
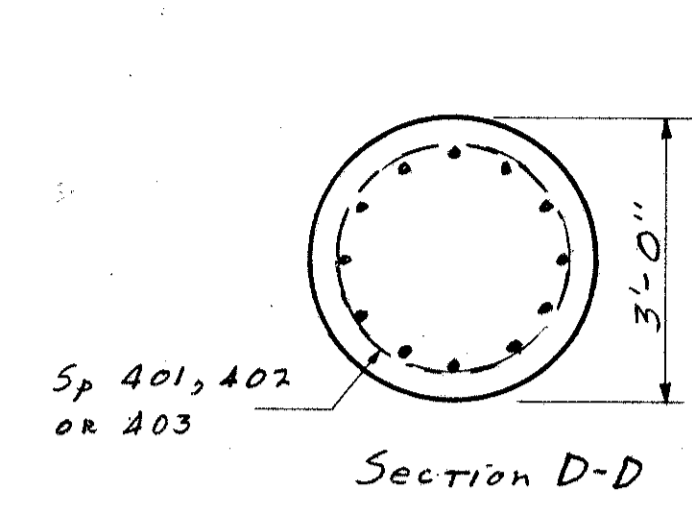
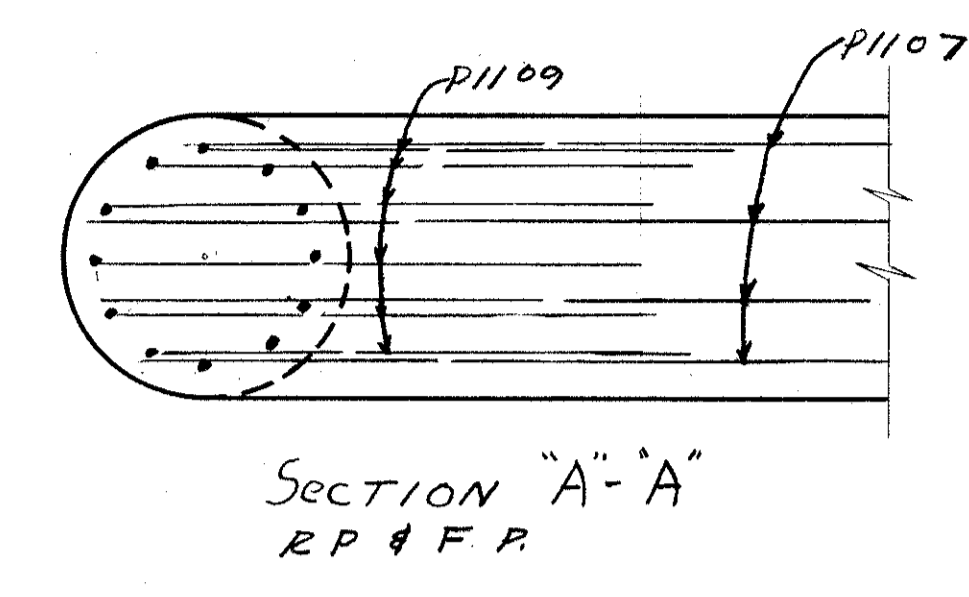
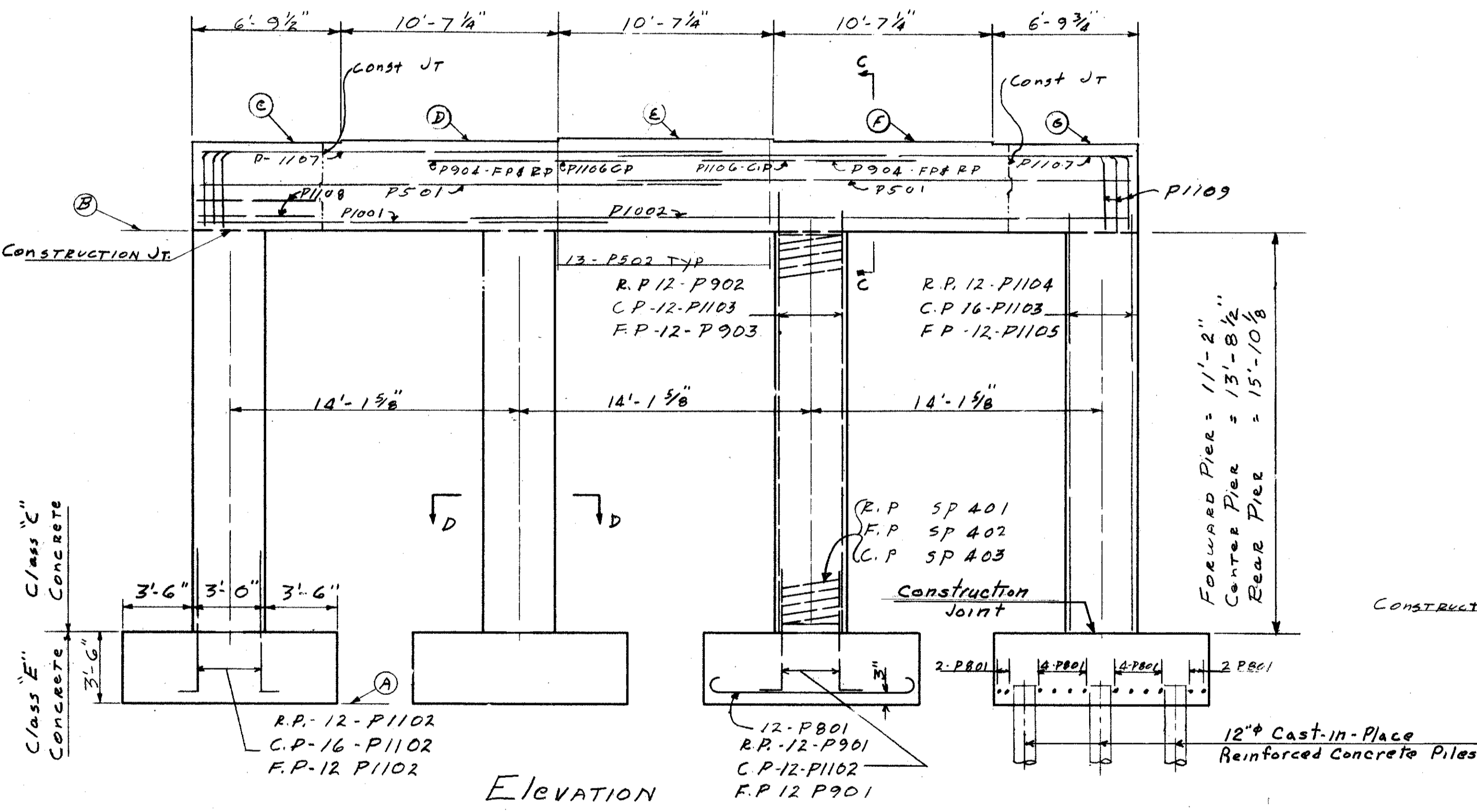
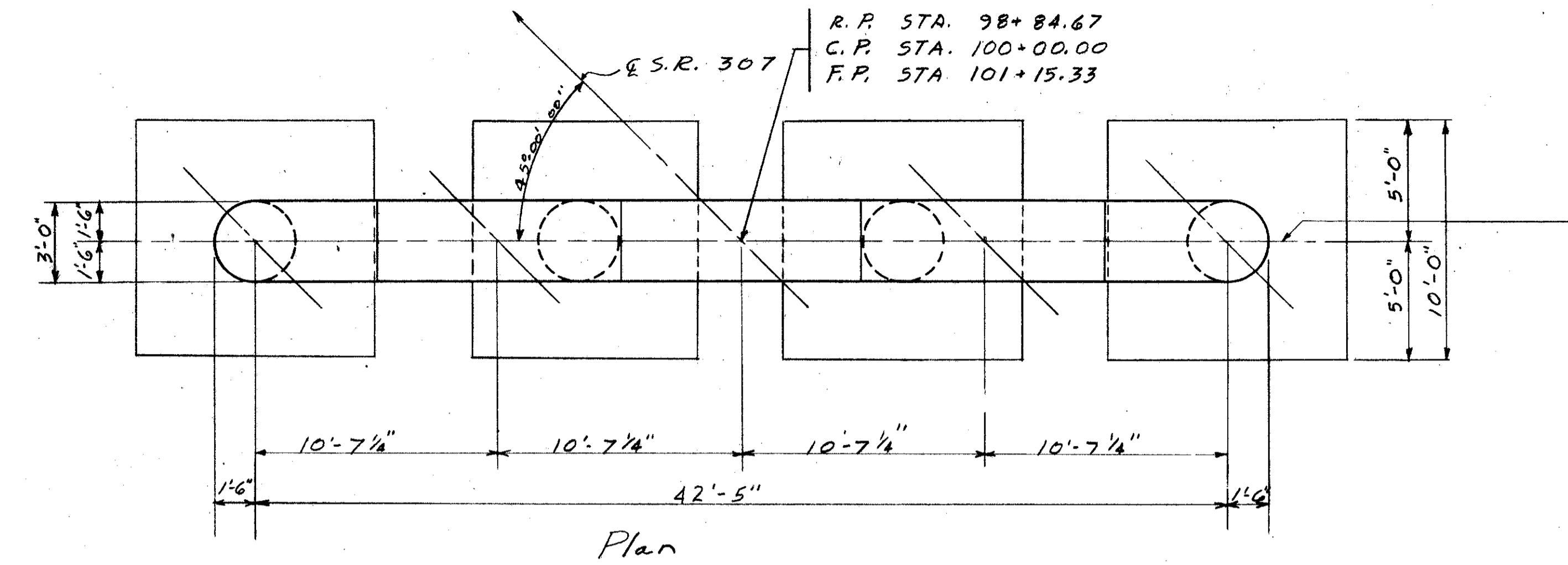


LAKE COUNTY  
SEC. LAK-1-22.60



**Pier Notes**

Special Care shall be taken in placing reinforcing steel in the pier cap so that it will not interfere with the drilling anchor bolt holes.

Reinforcing steel shall clear the face of concrete by 2" unless otherwise noted.

All pier details and reinforcement are symmetrical about centerline of pier, unless otherwise noted.

Piles shall be driven to a minimum bearing capacity of 41 Tons per pile.

**Spiral Notes**

The length shown in the bar list for spiral bars is the distance from the top of the footing to the bottom of the cap.

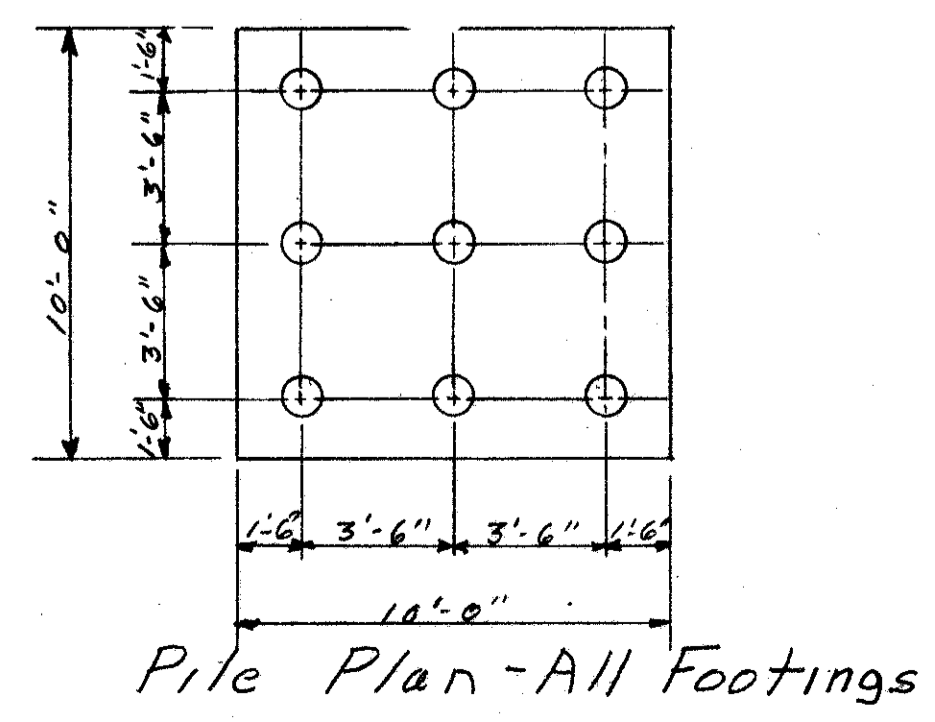
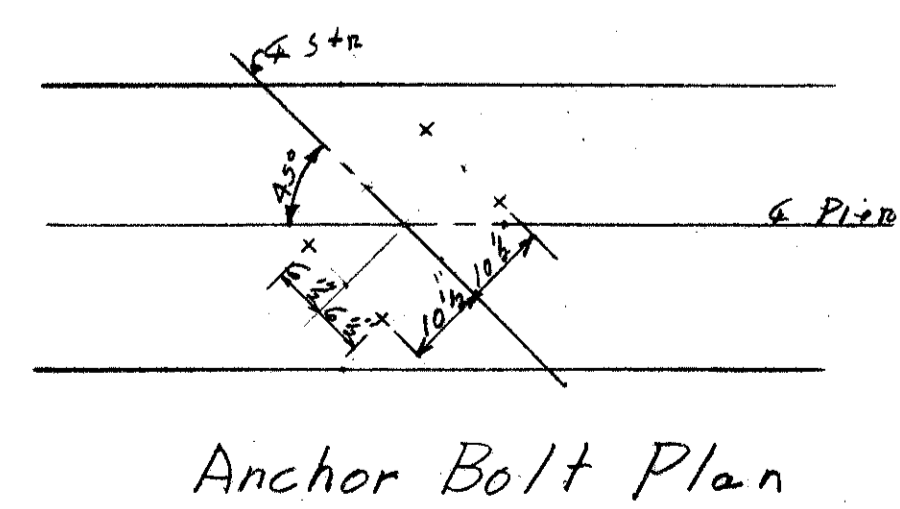
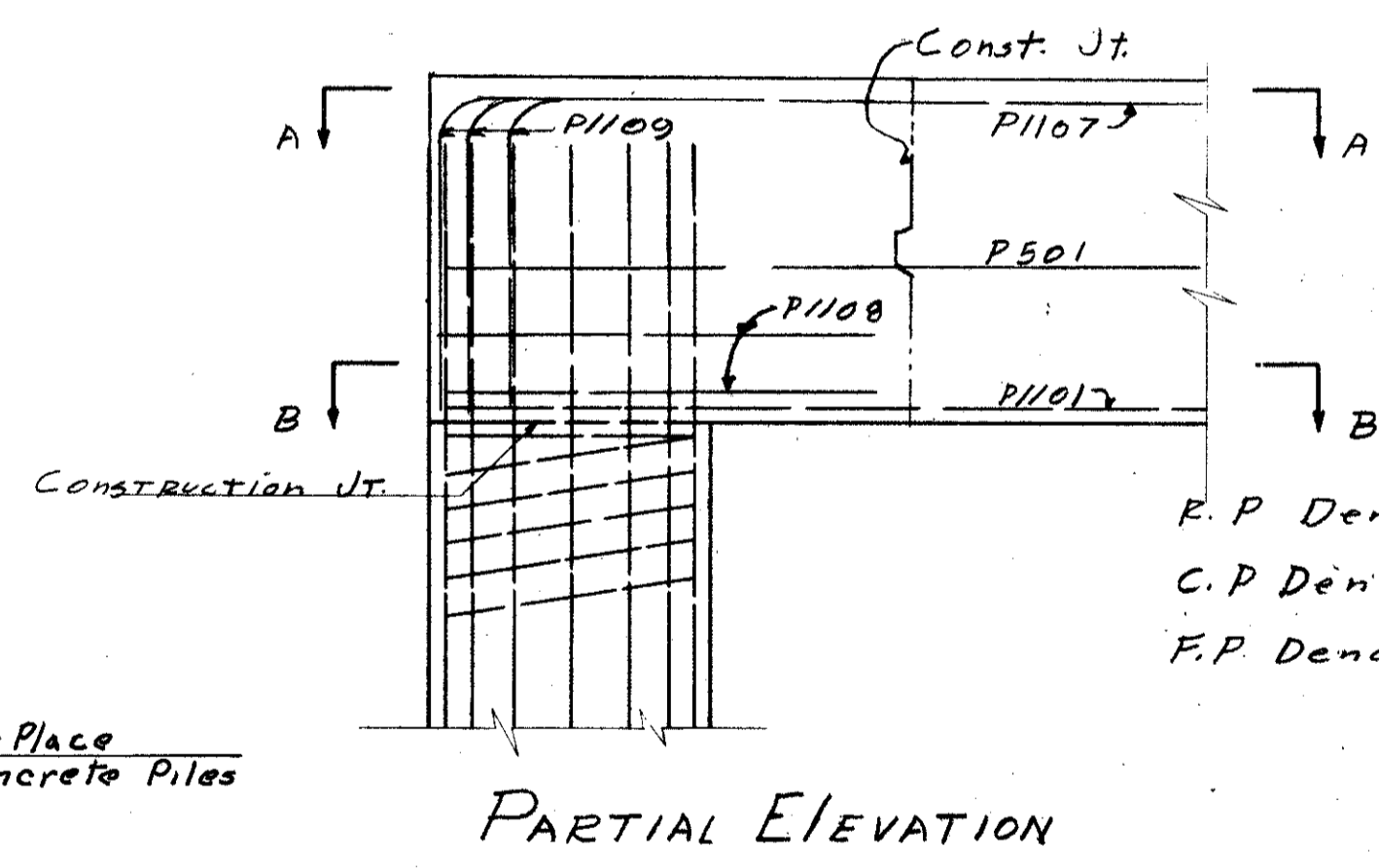
The no. of turns shown is the length divided by the pitch plus 3 turns (total No. closed coils) expressed to the nearest whole No.

Spiral bars shall have no deformations, but shall in other respects conform to item 5-4.

1 1/2 closed coils shall be provided at the ends of each unit.

Four steel channels, two on angle spacers, weighing approx. 0.68 lbs per lin ft, shall be provided for each spiral unit.

They shall be equally spaced along the periphery of the coil. The number of pounds of spacers based on 0.68 lbs per lin ft. will be paid for as reinforcing steel and is included in the tabulated quantities of spiral bars.



LOCATION	A	B	C	D	E	F	G
Forward Pier	830.00	844.66	849.21	849.73	849.05	848.72	848.41
Center Pier	830.00	847.21	851.54	851.52	851.49	851.23	850.96
Rear Pier	830.00	849.34	853.44	853.48	853.51	853.30	853.09
			853.39	853.45	853.46	853.25	853.04

SEC. C-35 FED. AID PROJ. NO. ACI-1103 (29)

PREPARED BY  
CAPITOL ENGINEERING ASSOCIATES, DILLSBURG, PA.  
FOR  
STATE OF OHIO  
DEPARTMENT OF HIGHWAYS

PIER DETAILS  
BRIDGE NO. LAK-1-2417  
S.R. UNDER RELOC. S.R. 307  
LAKE COUNTY  
STA. 957 + 30.00

DESIGNED	DRAWN	TRACED	CHECKED	REVISED DATE	REVISED
TEB	TEB		P.J.P.	10-22-58	