

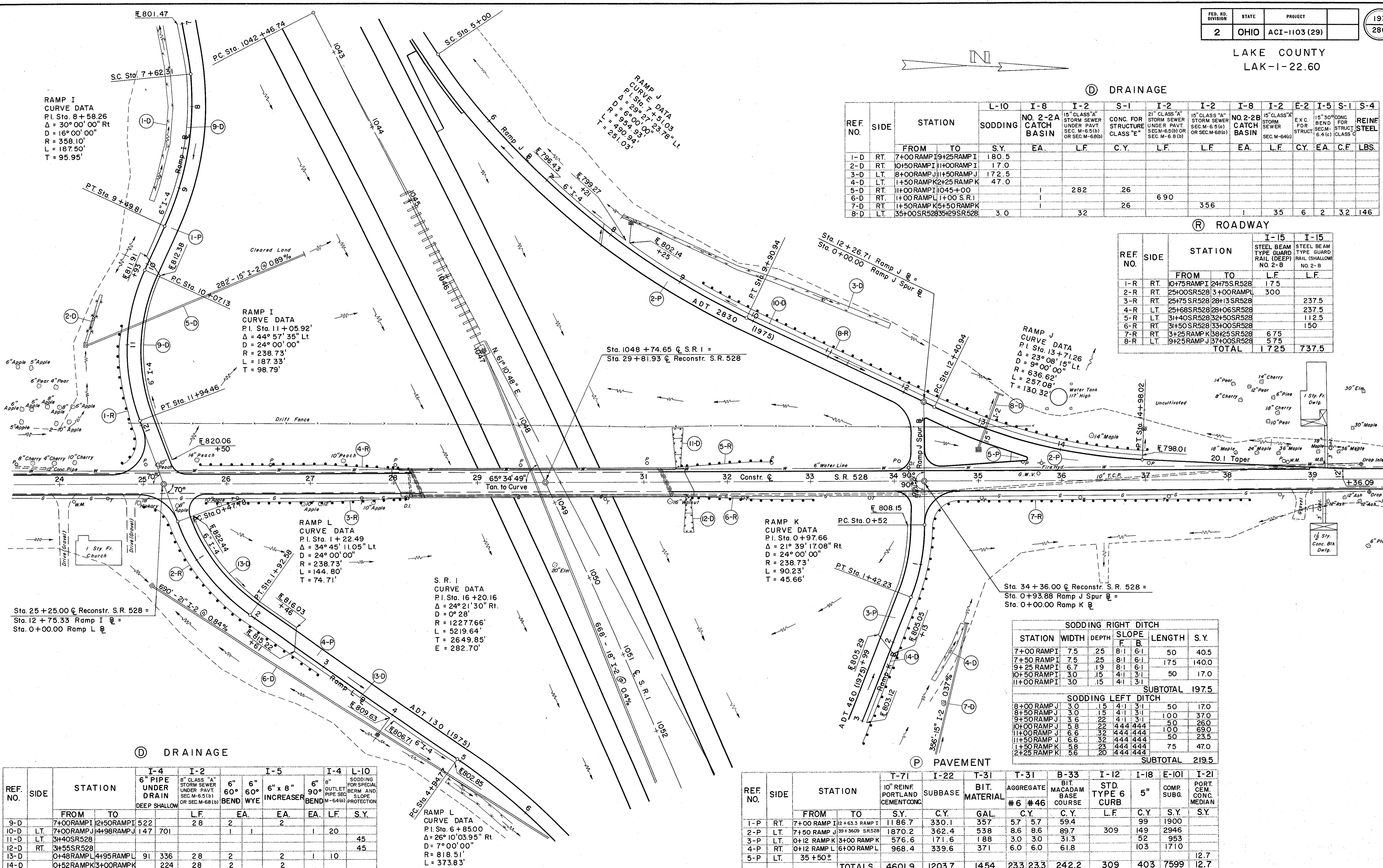


④ DRAINAGE

REF. NO.	SIDE	STATION	L-10 SODDING	I-8 NO. 2-2A CATCH BASIN	I-2 15" CLASS "A" STORM SEWER UNDER PAVT. SEC. M-6.5(b) OR SEC. M-68(b)	S-1 CONC. FOR STRUCTURE CLASS "E"	I-2 21" CLASS "A" STORM SEWER UNDER PAVT. SEC. M-6.5(b) OR SEC. M-6.8 (b)	I-2 15" CLASS "A" STORM SEWER UNDER PAVT. SEC. M-6.5(b) OR SEC. M-68(b)	I-8 NO. 2-2B CATCH BASIN	E-2 EX. C. FOR STRUCT. SEC. M-64(c)	I-5 15" 30' CONC. FOR STRUCT. CLASS "C"	S-1 REIN. STEEL	S-4	
		FROM TO	S.Y.	EA.	LF.	C.Y.	LF.	LF.	EA.	LF.	C.Y.	EA.	C.F.	LBS.
1-D	RT.	7+00 RAMP I 9+25 RAMP I	180.5											
2-D	RT.	10+50 RAMP I 11+00 RAMP I	17.0											
3-D	LT.	8+00 RAMP J 11+50 RAMP J	172.5											
4-D	LT.	1+50 RAMP K 2+25 RAMP K	47.0											
5-D	RT.	11+00 RAMP I 10+45+00			282	26								
6-D	RT.	1+00 RAMP L 1+00 S.R. I					690							
7-D	RT.	1+50 RAMP K 5+50 RAMP K				26		356			35	6	2	3.2
8-D	LT.	35+00 S.R. 528 35+29 S.R. 528	3.0		32									146

⑤ ROADWAY

REF. NO.	SIDE	STATION	I-15 STEEL BEAM TYPE GUARD RAIL (DEEP) NO. 2-B	I-15 STEEL BEAM TYPE GUARD RAIL (SHALLOW) NO. 2-B
		FROM TO	LF.	LF.
1-R	RT.	10+75 RAMP I 24+75 S.R. 528	175	
2-R	RT.	25+00 S.R. 528 3+00 RAMP L	300	
3-R	RT.	25+75 S.R. 528 28+13 S.R. 528		237.5
4-R	LT.	25+68 S.R. 528 28+06 S.R. 528		237.5
5-R	LT.	31+40 S.R. 528 32+50 S.R. 528		112.5
6-R	RT.	31+50 S.R. 528 33+00 S.R. 528		150
7-R	RT.	3+25 RAMP K 38+25 S.R. 528	675	
8-R	LT.	9+25 RAMP J 37+00 S.R. 528	575	
TOTAL			1725	737.5



④ DRAINAGE

REF. NO.	SIDE	STATION	I-4 6" PIPE UNDER DRAIN DEEP SHALLOW	I-2 8" CLASS "A" STORM SEWER UNDER PAVT. SEC. M-6.5(b) OR SEC. M-68(b)	I-5 6" 60° BEND	I-4 6" 60° WYE	I-4 6" x 8" INCREASER	I-4 6" 90° BEND	L-10 SODDING FOR SPECIAL BERM AND SLOPE PROTECTION
		FROM TO	EA.	LF.	EA.	EA.	EA.	EA.	S.Y.
9-D		7+00 RAMP I 12+50 RAMP I	522	28	2				
10-D	LT.	7+00 RAMP I 14+98 RAMP J	147	701	1			20	45
11-D	LT.	3+40 S.R. 528							45
12-D	RT.	3+55 S.R. 528							45
13-D		0+48 RAMP L 14+95 RAMP L	91	336	28	2	2	1	10
14-D		0+52 RAMP K 3+00 RAMP K	224	28	2		2		

⑤ PAVEMENT

REF. NO.	SIDE	STATION	T-71 10" REIN. PORTLAND CEMENT CONC.	I-22 SUBBASE	T-31 BIT. MATERIAL	T-31 AGGREGATE #6	B-33 BIT. MACADAM BASE COURSE	I-12 STD. TYPE 6 CURB	I-18 5" COMP. SUBG.	E-101	I-21 PORT. CEM. CONC. MEDIAN
		FROM TO	S.Y.	C.Y.	GAL.	#6 #46	C.Y.	LF.	C.Y.	S.Y.	S.Y.
1-P	RT.	7+00 RAMP I 12+63.3 RAMP I	1186.7	330.1	357	57	57	59.4	99	1900	
2-P	LT.	7+50 RAMP J 39+3609 S.R. 528	1870.2	362.4	538	8.6	8.6	89.7	309	149	2946
3-P	LT.	0+12 RAMP K 3+00 RAMP K	576.6	171.6	188	3.0	3.0	31.3	52	953	
4-P	RT.	0+12 RAMP L 6+00 RAMP L	968.4	339.6	371	6.0	6.0	61.8	103	1710	
5-P	LT.	35+50±									12.7
TOTALS			4601.9	1203.7	1454	233	233	242.2	309	403	7599

SODDING RIGHT DITCH

STATION	WIDTH	DEPTH	SLOPE F/B	LENGTH	S.Y.
7+00 RAMP I	7.5	25	8:1 6:1	50	40.5
7+50 RAMP I	7.5	25	8:1 6:1	175	140.0
9+25 RAMP I	6.7	19	8:1 6:1	50	17.0
10+50 RAMP I	3.0	15	4:1 3:1		
11+00 RAMP I	3.0	15	4:1 3:1		
SUBTOTAL 197.5					

SODDING LEFT DITCH

STATION	WIDTH	DEPTH	SLOPE F/B	LENGTH	S.Y.
8+00 RAMP J	3.0	15	4:1 3:1	50	17.0
8+50 RAMP J	3.0	15	4:1 3:1	100	37.0
9+50 RAMP J	3.6	22	4:1 3:1	50	26.0
10+00 RAMP J	5.8	22	4:44 4:44	100	69.0
11+00 RAMP J	6.6	32	4:44 4:44	50	23.5
11+50 RAMP J	6.6	32	4:44 4:44	75	47.0
1+50 RAMP K	3.0	15	4:1 3:1		
2+25 RAMP K	3.0	15	4:1 3:1		
SUBTOTAL 219.5					