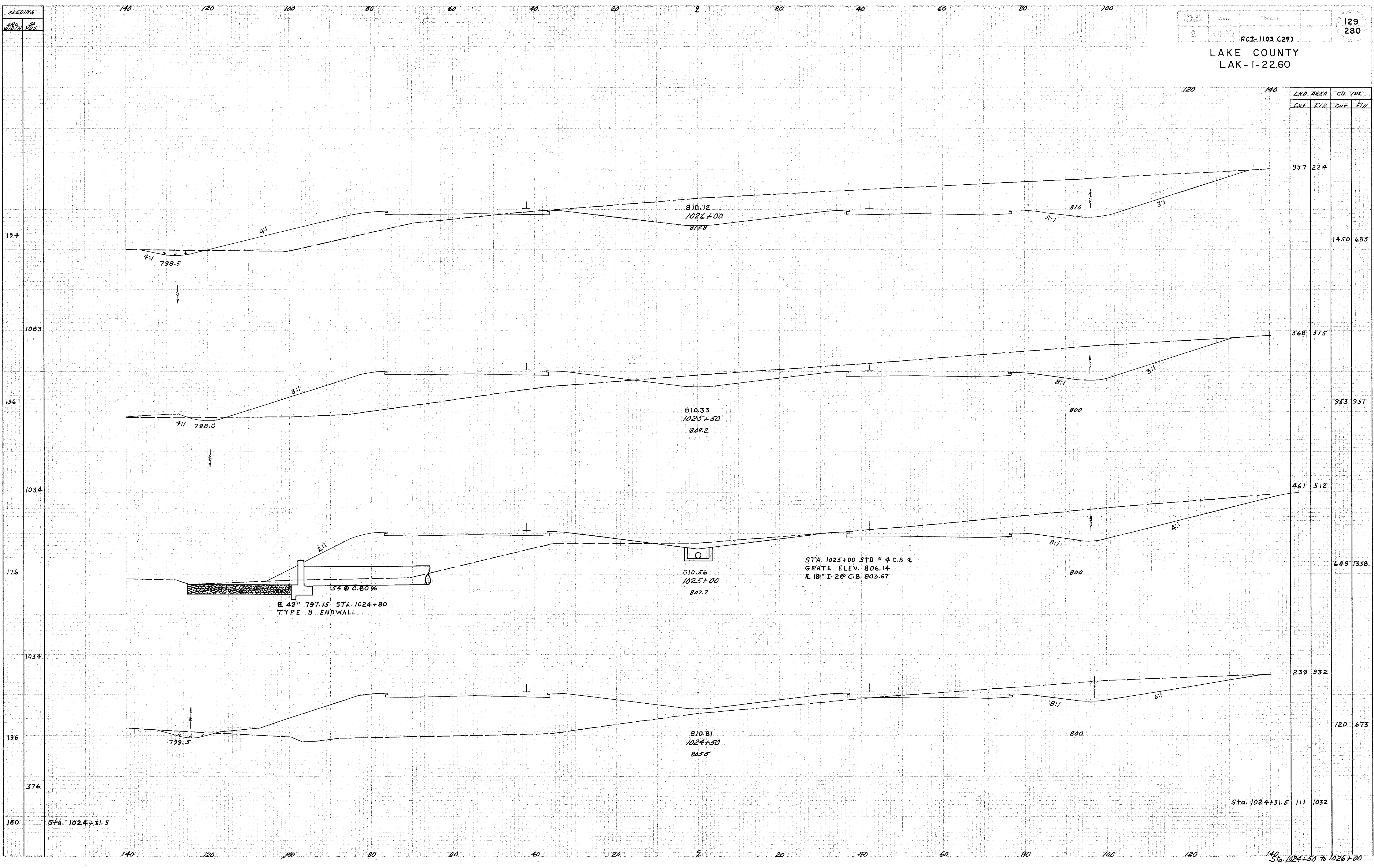


LAKE COUNTY  
LAK-I-22.60



A. Bec' 21-58  
L.S. 5-21-58

42" 797.15 STA. 1024+80  
TYPE B ENDWALL

STA. 1025+00 STD # 4 C.B. &  
GRATE ELEV. 806.14  
# 18" I-2@ C.B. 803.67

Sta. 1024+50 to 1026+00