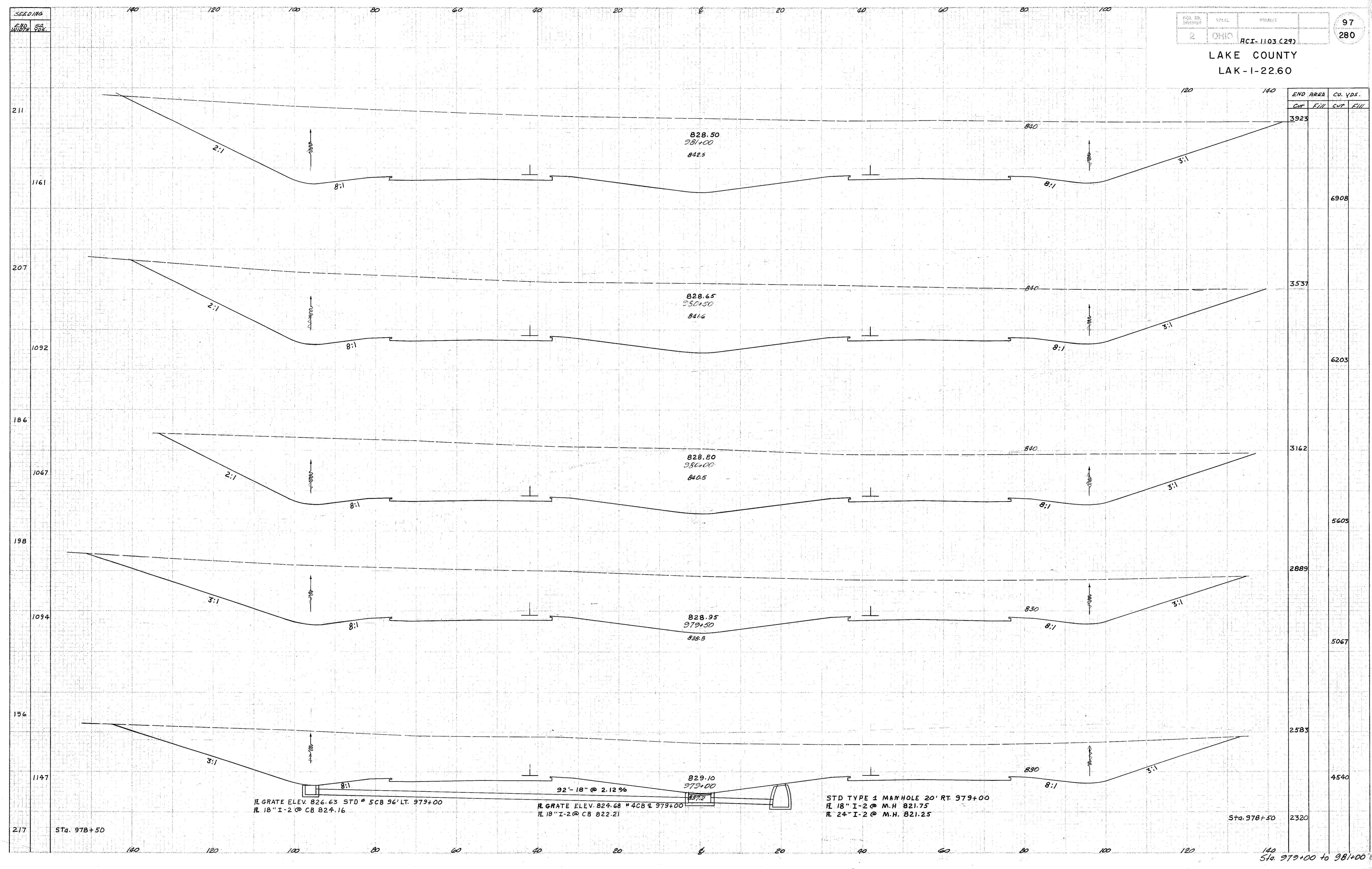


LAKE COUNTY  
LAK-1-22.60



11 GRATE ELEV. 826.63 STD # 5CB 36' LT. 979+00  
# 18" I-2 @ CB 824.16

92'-18" @ 2.12 %  
12 GRATE ELEV. 824.68 # 4CB @ 979+00  
# 18" I-2 @ CB 822.21

STD TYPE 1 MANHOLE 20' RT. 979+00  
# 18" I-2 @ M.H. 821.75  
# 24" I-2 @ M.H. 821.25

Sta. 978+50

Sta. 979+00 to 981+00