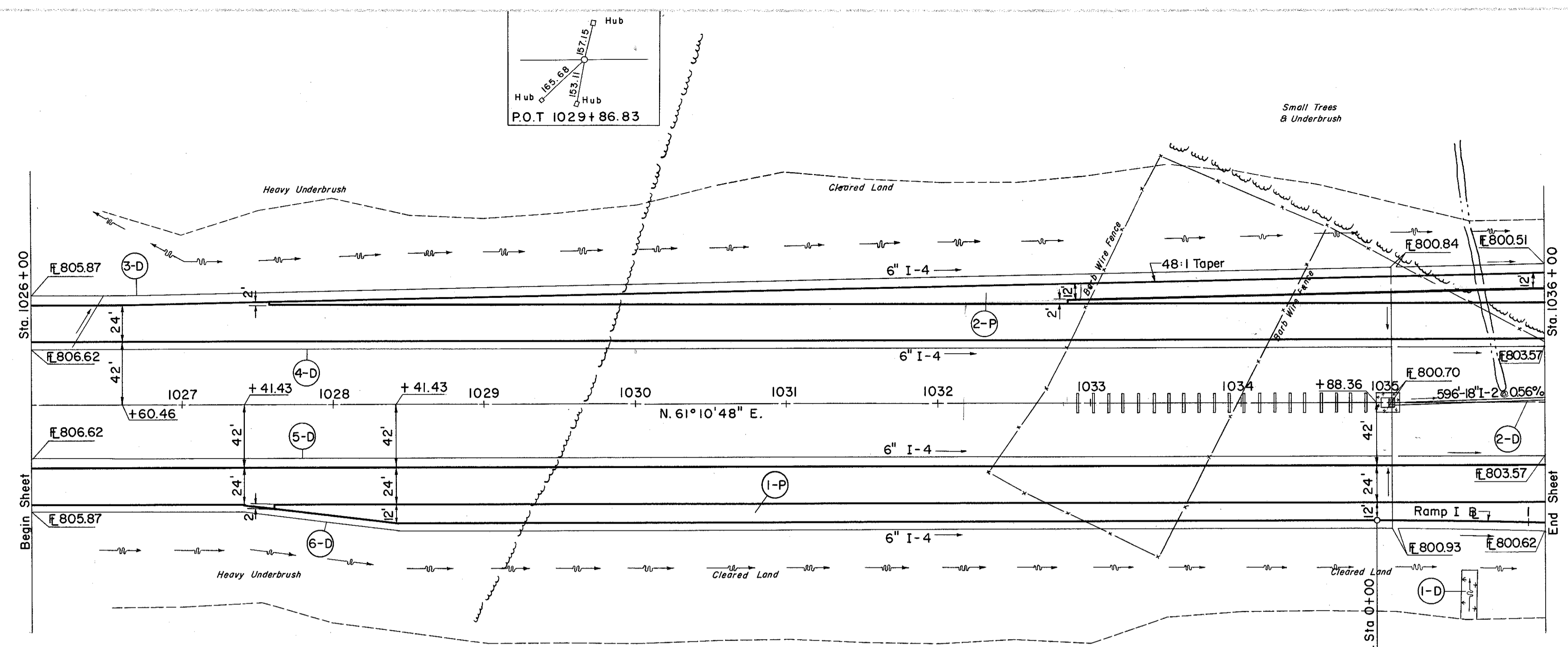
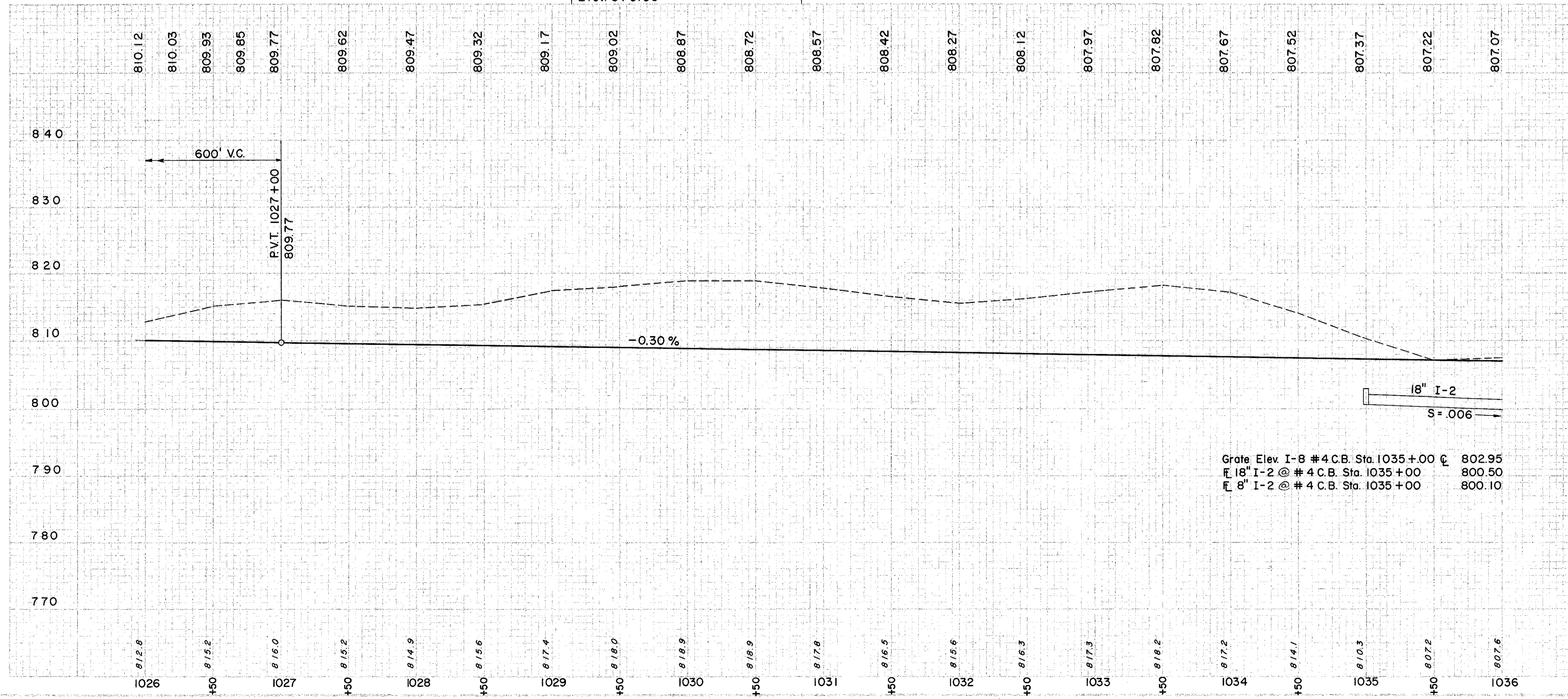


LAKE COUNTY
LAK-1-22.60



RAMP I
CURVE DATA
P.I. Sta. 3 + 06.81
 $\Delta = 9^\circ 11' 05''$ Rt.
 $D = 1^\circ 30' 00''$
 $R = 3819.72'$
 $L = 612.31'$
 $T = 306.81'$

B.M. #107 Lag Bolt in root of 18" Beech
145' Lt. of Sta. 1029+73
Elev. 810.03



Grate Elev I-8 #4 C.B. Sta. 1035+00 @ 802.95
18" I-2 @ #4 C.B. Sta. 1035+00 800.50
8" I-2 @ #4 C.B. Sta. 1035+00 800.10

(D) DRAINAGE

REF. NO.	STATION	FROM	TO	DESCRIPTION	EA	L.F.
I-8	1026+00	1026+00	1027+00	#4 CATCH BASIN	1	
I-5	1027+00	1027+00	1028+00	18" STORM SEWER	98	
I-4	1028+00	1028+00	1029+00	6" DRAIN PIPE	1032	
I-5	1029+00	1029+00	1030+00	90° BEND	1	
I-5	1030+00	1030+00	1031+00	6" INCREASER	1	
I-2	1031+00	1031+00	1032+00	8" SEWER	50	
I-2	1032+00	1032+00	1033+00	8" SEWER	24	
I-2	1033+00	1033+00	1034+00	8" SEWER	24	
I-2	1034+00	1034+00	1035+00	8" SEWER	44	
I-2	1035+00	1035+00	1036+00	8" SEWER	10	
I-2	1036+00	1036+00	1036+00	8" SEWER	10	

(P) PAVEMENT

REF. NO.	STATION	FROM	TO	DESCRIPTION	C.Y.
I-P	RT	1027+43	1036+00	10' PORTLAND CEMENT CONCRETE	1115
I-P	LT	1026+60	1036+00	10' PORTLAND CEMENT CONCRETE	185.8
I-P	TOTALS				2170
2-P	RT	1026+00	1036+00	10' PORTLAND CEMENT CONCRETE	175.8
2-P	LT	1026+00	1036+00	10' PORTLAND CEMENT CONCRETE	1055
2-P	TOTALS				361

EXCAVATION = 79,705 C.Y.
EMBANKMENT = 211 C.Y.
EMBANKMENT 22 = 257 C.Y.