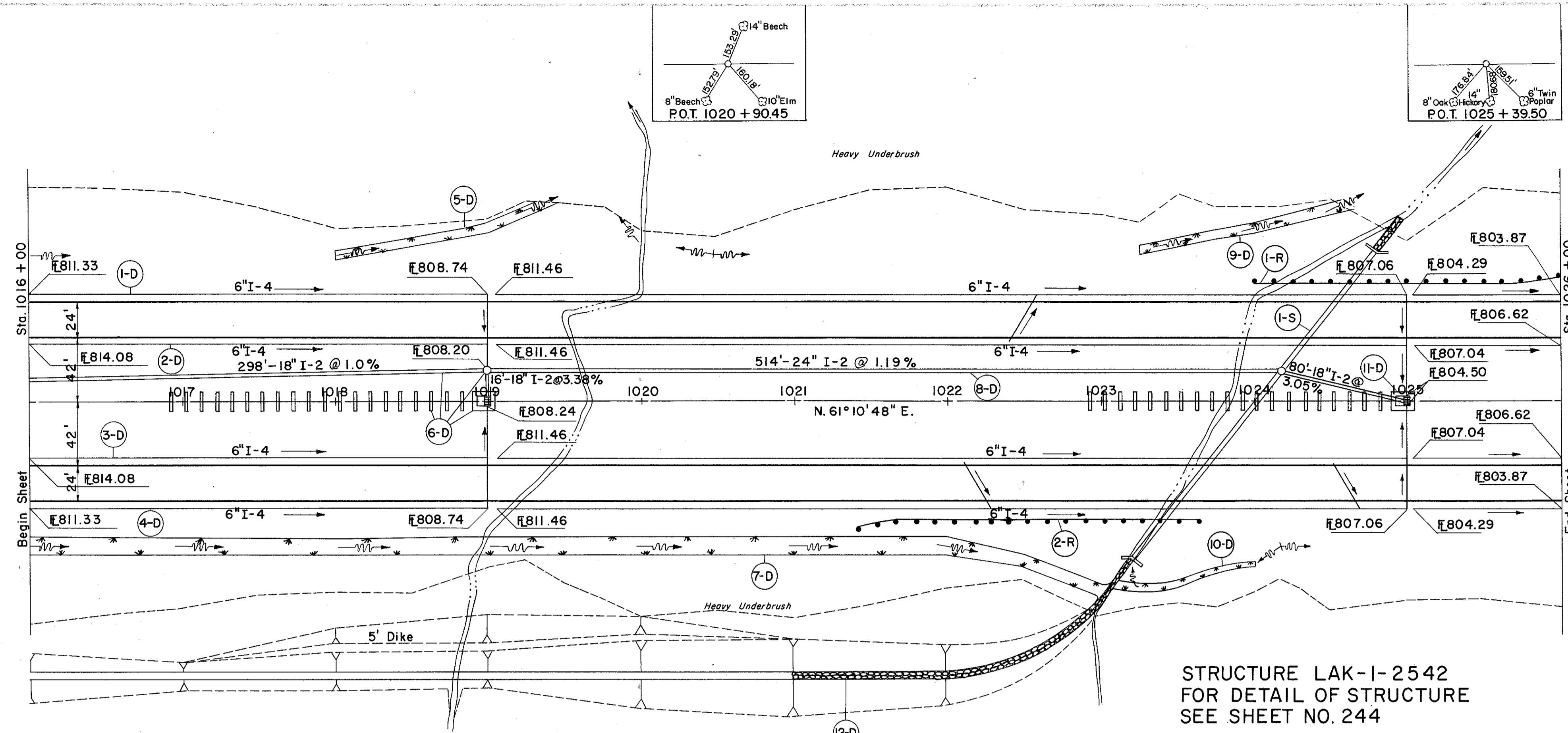
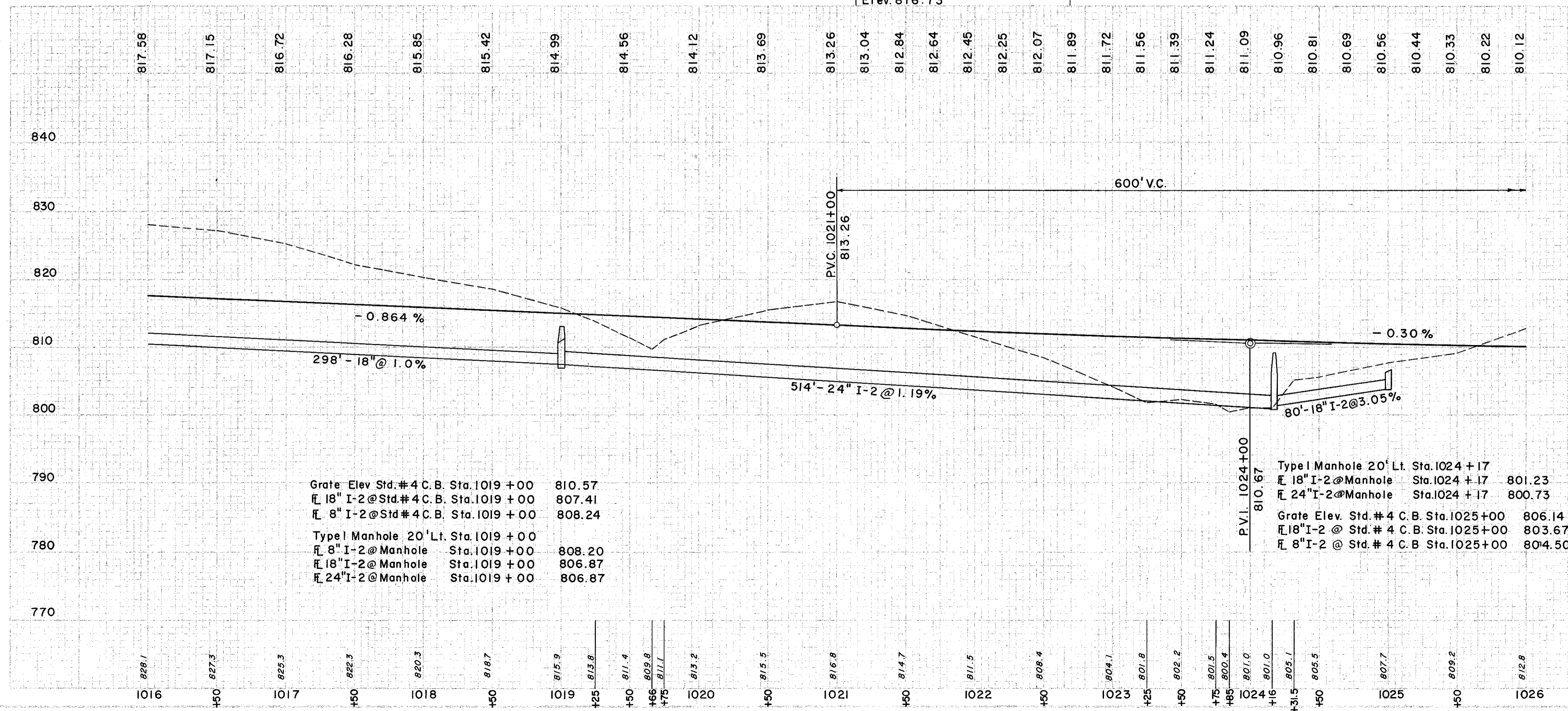


LAKE COUNTY
LAK-I-22.60



STRUCTURE LAK-I-2542
FOR DETAIL OF STRUCTURE
SEE SHEET NO. 244

B.M. #106 Log Bolt in roof of 12" Oak
123' Rt. of Sta. 1021+65
Elev. 816.73



Grate Elev. Std. # 4 C.B. Sta. 1019+00 810.57
 18" I-2 @ Std. # 4 C.B. Sta. 1019+00 807.41
 8" I-2 @ Std. # 4 C.B. Sta. 1019+00 808.24
 Type I Manhole 20' Lt. Sta. 1019+00
 8" I-2 @ Manhole Sta. 1019+00 808.20
 18" I-2 @ Manhole Sta. 1019+00 806.87
 24" I-2 @ Manhole Sta. 1019+00 806.87

Type I Manhole 20' Lt. Sta. 1024+17
 18" I-2 @ Manhole Sta. 1024+17 801.23
 24" I-2 @ Manhole Sta. 1024+17 800.73
 Grate Elev. Std. # 4 C.B. Sta. 1025+00 806.14
 18" I-2 @ Std. # 4 C.B. Sta. 1025+00 803.67
 8" I-2 @ Std. # 4 C.B. Sta. 1025+00 804.50

(D) DRAINAGE

REF. NO.	STATION	FROM	TO	I-2		I-4		I-5		I-8	I-10	L-10	
				CL. STORM SEWER UNDER 18" (M-6.8(c))	SEWER SEC. 18" (M-6.8(c))	8" OUTLET PIPE SEC. (M-6.5(a))	6" PIPE UNDER DRAIN	6" PIPE UNDER DRAIN	6" INCREASED (M-6.5(b))				6" TEE (M-6.8(b))
1-D	1016+00	1026+00	71	91	20	992	632	496	EA	1			
2-D	1016+00	1026+00	112	112	20	992	632	496	EA	2			
3-D	1016+00	1026+00	71	71	20	992	632	496	EA	2			
4-D	1016+00	1019+50	71	71	20	992	632	496	EA	2			
5-D	1016+00	1019+00	71	71	20	992	632	496	EA	2			
6-D	1016+00	1019+00	71	71	20	992	632	496	EA	2			
7-D	1016+00	1023+00	71	71	20	992	632	496	EA	2			
8-D	1019+00	1024+17	71	71	20	992	632	496	EA	2			
9-D	1023+25	1024+60	71	71	20	992	632	496	EA	2			
10-D	1023+00	1024+00	71	71	20	992	632	496	EA	2			
11-D	1024+17	1025+00	71	71	20	992	632	496	EA	2			
12-D	1016+00	1023+00	71	71	20	992	632	496	EA	2			
				SUB TOTAL		196							
				SUB TOTAL		691							

SODDING LEFT DITCH

STATION	DEPTH OF SODDING	LENGTH	S.Y.
1016+00	0.6	81	3.1
1018+00	0.6	81	3.1
1022+00	0.6	81	3.1
1023+00	0.35	41	1.55
1023+00	0.35	41	1.55
1024+00	0.1	41	0.41
SUB TOTAL			196
SUB TOTAL			691

ROADWAY

REF. NO.	STATION	FROM	TO	I-8		I-10	L-10
				STD. # 4 CATCH BASIN	STD. # 1 M.H.		
1-R	1024+00	1026+00	200	225			
2-R	1021+40	1023+65	RT	225			
				TOTAL		425	

(S) STRUCTURE

REF. NO.	STATION	SIDE OR STRUCT.	C.Y.	E-2 EXC. FOR STRUCT.	E-3 CHANNEL EXC.	I-10 ROCK	L-10 SODDING	S-1 CONC. FOR STRUCT.	S-4 REINF.	S-27 ROW/CULV. M-6(b)
1-S	1024+00		185.0	5.0	18.5	8	25.4	1201	262	

EXCAVATION 31,505 C.Y.
 EMBANKMENT 12,634 C.Y.
 22 15,415 C.Y.