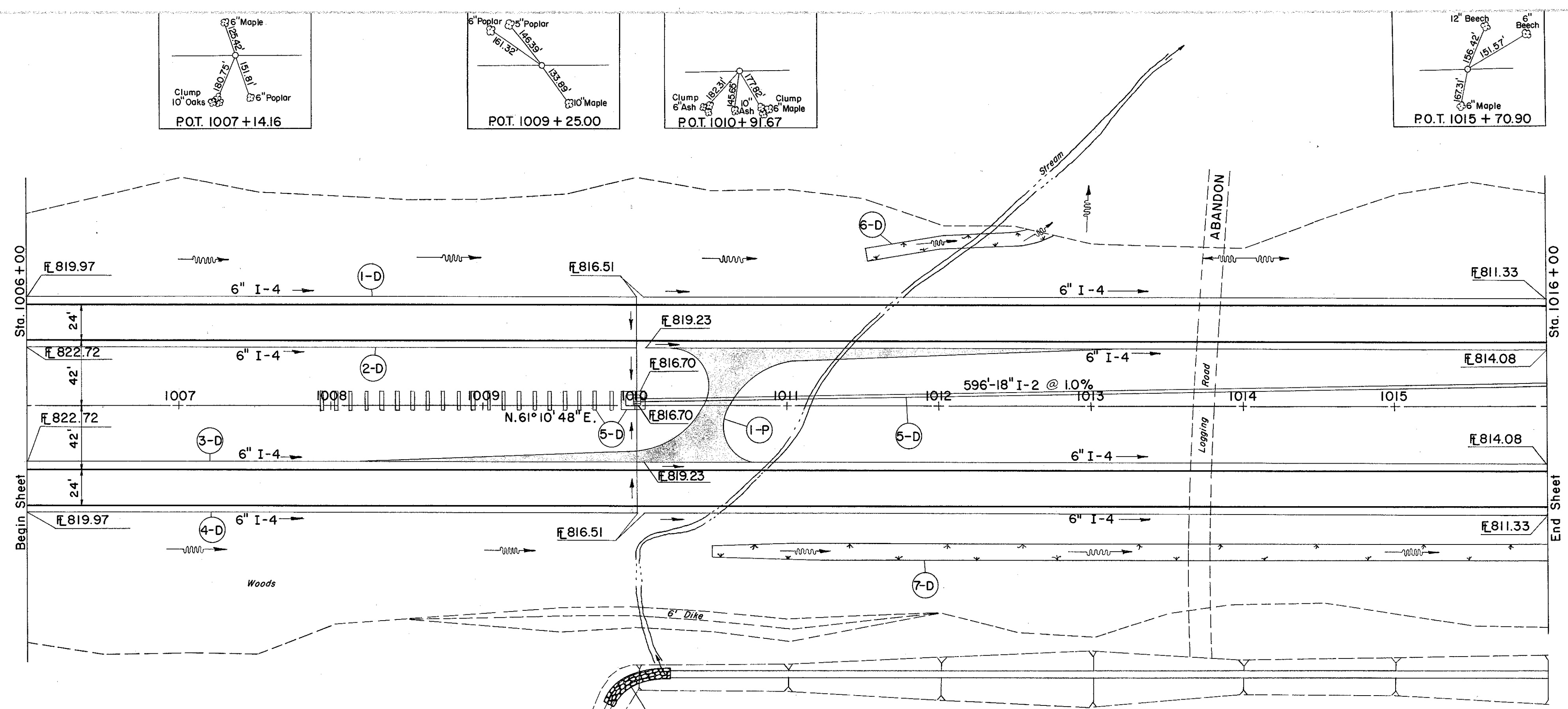
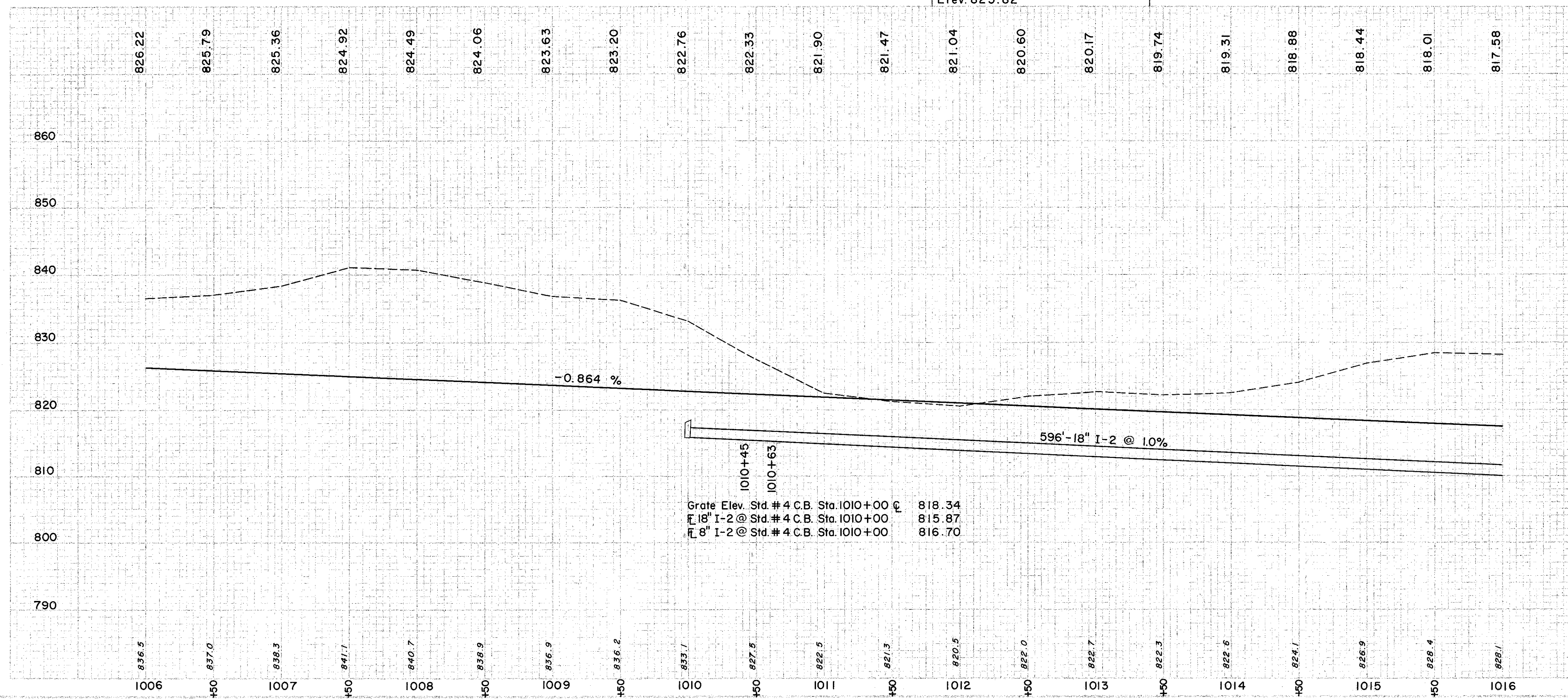


LAKE COUNTY
LAK-1-22.60



FOR DETAIL OF
CROSS OVER
SEE SHEET NO. 253

B.M. #105 Lag Bolt in root of 10" Oak
87' Rt. of Sta. 1012+11
Elev. 825.82



Grate Elev. Std. # 4 C.B. Sta. 1010+00 @ 818.34
 18" I-2 @ Std. # 4 C.B. Sta. 1010+00 815.87
 8" I-2 @ Std. # 4 C.B. Sta. 1010+00 816.70

① DRAINAGE

REF NO.	STATION	FROM	TO	I-2		I-4		I-5	I-8	I-10	I-10
				CL. A STORM SEWER	STORM SEWER	8" PIPE	6" PIPE				
1-D	1006+00	1006+00	1007+00	18"	18"	8"	6"				DUMPED ROCK CHANNEL PROTECT.
2-D	1006+00	1006+00	1007+00	18"	18"	8"	6"				SODDING
3-D	1006+00	1006+00	1007+00	18"	18"	8"	6"				SODDING
4-D	1006+00	1006+00	1007+00	18"	18"	8"	6"				SODDING
5-D	1010+00	1010+00	1011+00	18"	18"	8"	6"				SODDING
6-D	1011+00	1011+00	1012+00	18"	18"	8"	6"				SODDING
7-D	1010+00	1010+00	1011+00	18"	18"	8"	6"				SODDING
8-D	1010+00	1010+00	1011+00	18"	18"	8"	6"				SODDING

② PAVEMENT

REF NO.	STATION	S.Y.
I-P	1010+50	3.8

DEPTH OF SODDING FT.	SLOPE	WIDTH OF SODDING FT.	LENGTH FT.	S.Y.
1011+50	0.4	8.1	115	121
1012+65	0.4	8.1	9.5	

STATION	DEPTH OF SODDING FT.	SLOPE	WIDTH OF SODDING FT.	LENGTH FT.	S.Y.
1010+50	0.4	8.1	3.1	50	47
1011+00	0.4	8.1	3.1	8.5	
1016+00	0.6	8.1	6.1	500	563

EXCAVATION	85,055 C.Y.
EMBANKMENT	762 C.Y.
EMBANKMENT - 22'	930 C.Y.