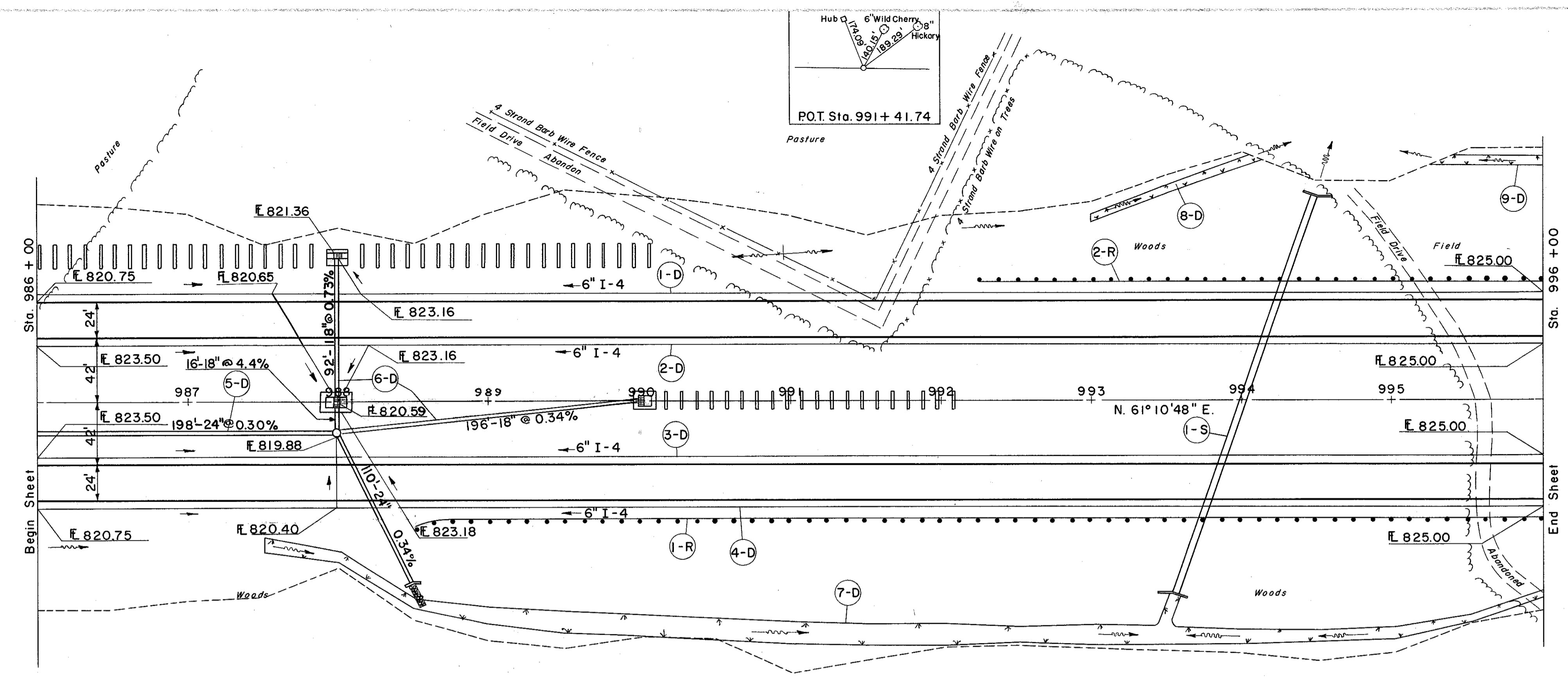
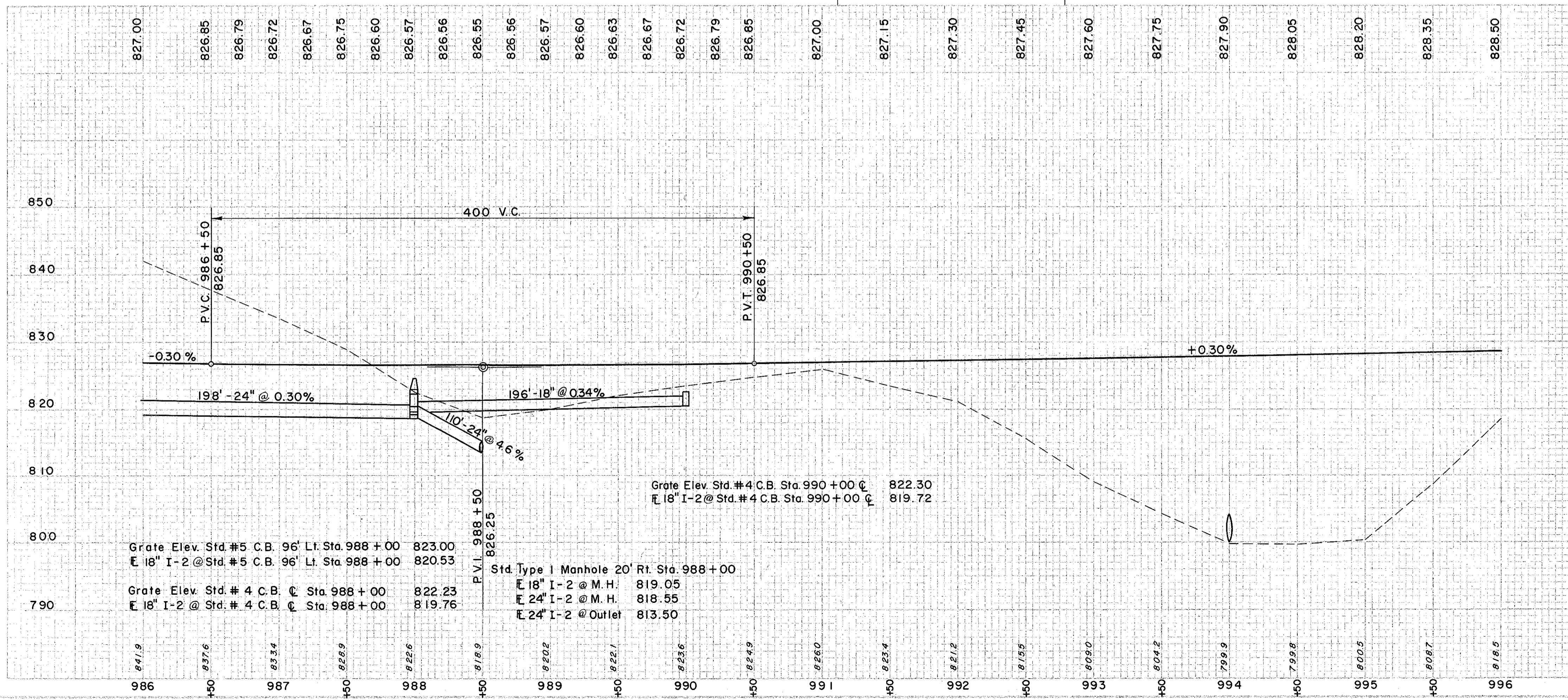


LAKE COUNTY
LAK-I-22.60



STRUCTURE LAK-I-2486
FOR DETAIL OF STRUCTURE
SEE SHEET NO. 243

B.M. # I05A Log Bolt in root of 8" Ash
150' Lt. of Sta. 992 + 10
Elev. 820.75



Grate Elev. Std. #5 C.B. 96' Lt. Sta. 988 + 00 823.00
 18" I-2 @ Std. #5 C.B. 96' Lt. Sta. 988 + 00 820.53
 Grate Elev. Std. #4 C.B. 96' Lt. Sta. 988 + 00 822.23
 18" I-2 @ Std. #4 C.B. 96' Lt. Sta. 988 + 00 819.76
 Std. Type 1 Manhole 20' Rt. Sta. 988 + 00
 18" I-2 @ M.H. 819.05
 24" I-2 @ M.H. 818.55
 24" I-2 @ Outlet 813.50

④ DRAINAGE

REF. NO.	STATION	SIDE	CL. "A" STORM SEWER UNDER PAVT. SEC.		CL. "A" STORM SEWER UNDER DRAIN PIPE SEC.		OUTLET PIPE SEC.	6" PIPE	I-4	I-5	I-8	I-10	I-10	S-1	S-4	E-2
			8" 18" 24"	8" 18" 24"	6" 18" 24"	6" 18" 24"										
1-D	986+00	LT	10.4	10.4	20	20	20	20	20	1	1	1	1	1	1	1
2-D	986+00	RT	10.4	10.4	20	20	20	20	20	1	1	1	1	1	1	1
3-D	986+00	RT	10.4	10.4	20	20	20	20	20	1	1	1	1	1	1	1
4-D	986+00	RT	10.4	10.4	20	20	20	20	20	1	1	1	1	1	1	1
5-D	986+00	RT	10.4	10.4	20	20	20	20	20	1	1	1	1	1	1	1
6-D	986+00	RT	10.4	10.4	20	20	20	20	20	1	1	1	1	1	1	1
7-D	986+00	RT	10.4	10.4	20	20	20	20	20	1	1	1	1	1	1	1
8-D	986+00	LT	10.4	10.4	20	20	20	20	20	1	1	1	1	1	1	1
9-D	986+00	LT	10.4	10.4	20	20	20	20	20	1	1	1	1	1	1	1
			SUBTOTAL		SUBTOTAL		SUBTOTAL		SUBTOTAL		SUBTOTAL		SUBTOTAL		SUBTOTAL	
			955		955		955		955		955		955		955	

⑤ ROADWAY

REF. NO.	STATION	SIDE	STATION		REF. NO.	STATION	SIDE
			FROM	TO			
1-R	988+50	RT	988+50	996+00	1-R	988+50	RT
2-R	992+25	LT	992+25	996+00	2-R	992+25	LT
			TOTAL		TOTAL		
			1125		1125		

⑥ STRUCTURES

REF. NO.	STATION	SIDE	STATION		REF. NO.	STATION	SIDE
			FROM	TO			
1-S	994+00	LT	994+00	994+00	1-S	994+00	LT
			TOTAL		TOTAL		
			51		51		

STATION	DEPTH OF SODDING FT.	SLOPES		WIDTH OF SODDING FT.	LENGTH OF SODDING FT.	S. Y.
		F	B			
987+50	.65	8:1	3:1	11.2	100	100
988+50	.35	4:1	4:1	6.8	350	100
992+00	1.3	4:1	4:1	14.4	50	68
992+50	.8	4:1	4:1	10.2	50	64
993+00	1.1	4:1	4:1	12.8	50	69
993+50	1.0	4:1	4:1	12.0	200	191
995+50	.15	4:1	4:1	5.2	50	31
996+00	.25	4:1	4:1	6.0	50	31
			SUBTOTAL		SUBTOTAL	
			955		955	
993+00	.2	4:1	4:1	5.4	50	29
993+50	.15	4:1	4:1	5.2	50	30
994+00	.20	4:1	4:1	5.6	50	30
995+40	.30	4:1	4:1	6.4	60	43
996+00	.30	4:1	4:1	6.4	60	43
			SUBTOTAL		SUBTOTAL	
			102		102	

EXCAVATION = 17,656 C.Y.
 EMBANKMENT = 76,484 C.Y.
 EMBANKMENT @ 22% = 93,311 C.Y.