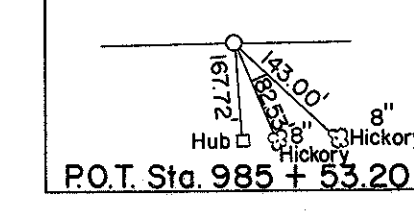
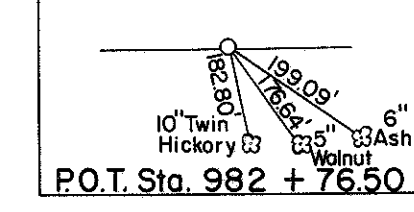
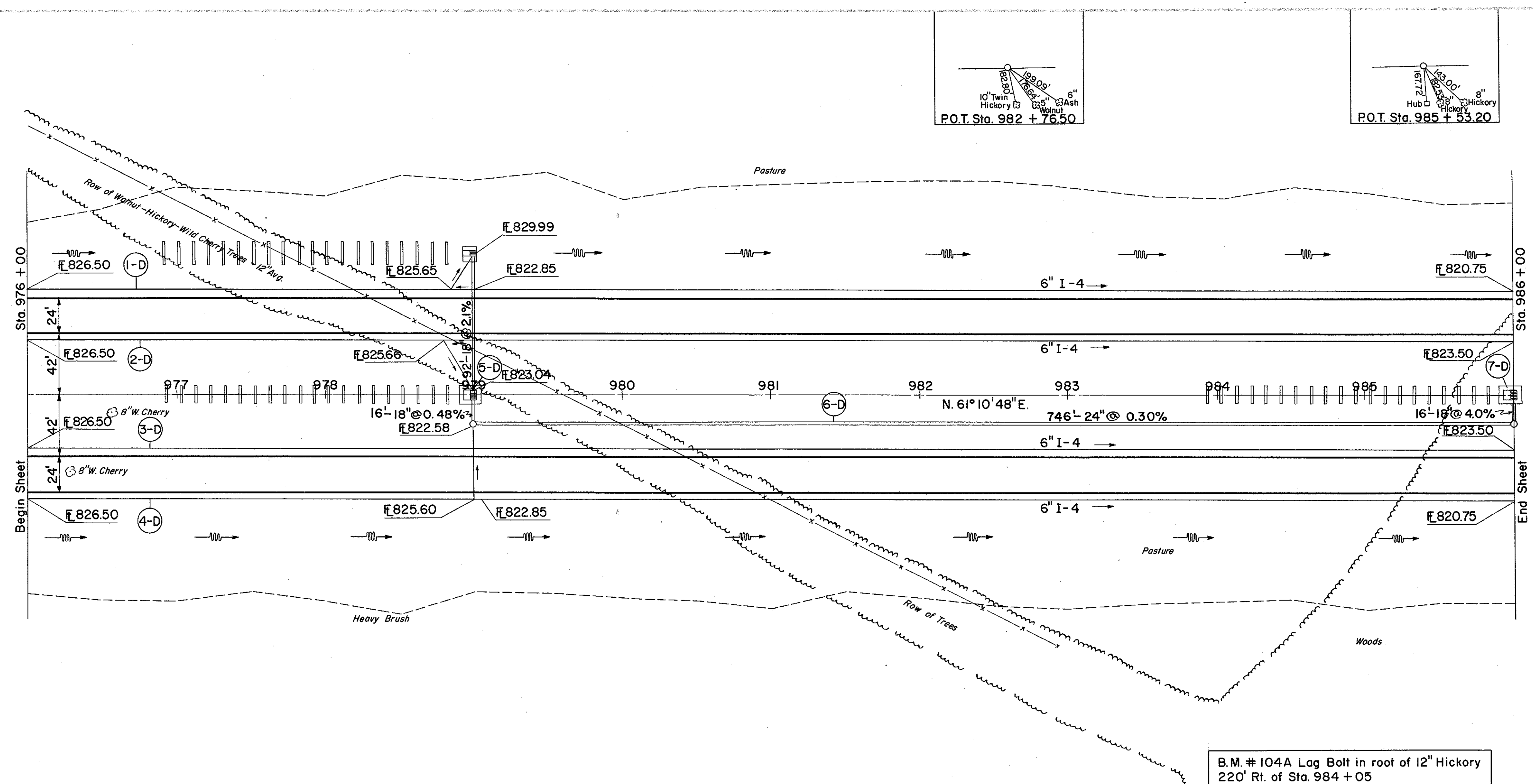
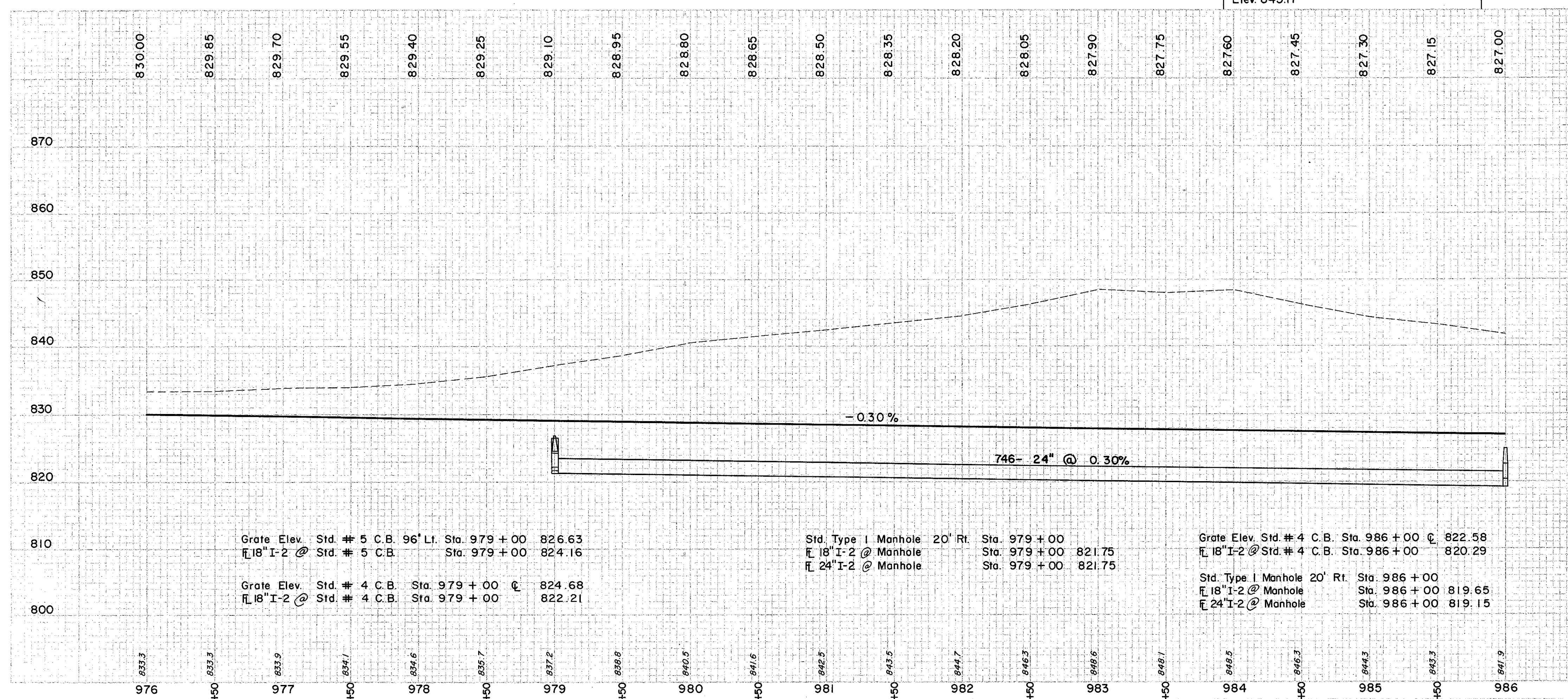


LAKE COUNTY
LAK-1-22.60



B.M. # 104A Log Bolt in root of 12" Hickory
220' Rt. of Sta. 984 + 05
Elev. 845.17



Grate Elev. Std. # 5 C.B. 96" Lt. Sta. 979 + 00 826.63
 18" I-2 @ Std. # 5 C.B. Sta. 979 + 00 824.16

Grate Elev. Std. # 4 C.B. Sta. 979 + 00 824.68
 18" I-2 @ Std. # 4 C.B. Sta. 979 + 00 822.21

Std. Type I Manhole 20' Rt. Sta. 979 + 00
 18" I-2 @ Manhole Sta. 979 + 00 821.75
 24" I-2 @ Manhole Sta. 979 + 00 821.75

Grate Elev. Std. # 4 C.B. Sta. 986 + 00 822.58
 18" I-2 @ Std. # 4 C.B. Sta. 986 + 00 820.29

Std. Type I Manhole 20' Rt. Sta. 986 + 00
 18" I-2 @ Manhole Sta. 986 + 00 819.65
 24" I-2 @ Manhole Sta. 986 + 00 819.15

(D) DRAINAGE

REF NO.	STATION	FROM	TO	CL. STORM SEWER		STORM SEWER		8" PIPE		8" OUTLET PIPE	STANDARD	L-10
				18" M-64(g)	18" M-64(g)	18" M-64(g)	18" M-64(g)	SHALLOW	DEEP			
1-D	976+00	986+00	71			314	698	10				
2-D	976+00	986+00	57			1026	10					
3-D	976+00	986+00	36			996	300					
4-D	976+00	986+00				696						
5-D	979+00											
6-D	979+00	986+00	92									103
7-D	986+00											55

EXCAVATION	125,411	C.Y.
EMBANKMENT	0	C.Y.
EMBANKMENT @ 22%	0	C.Y.