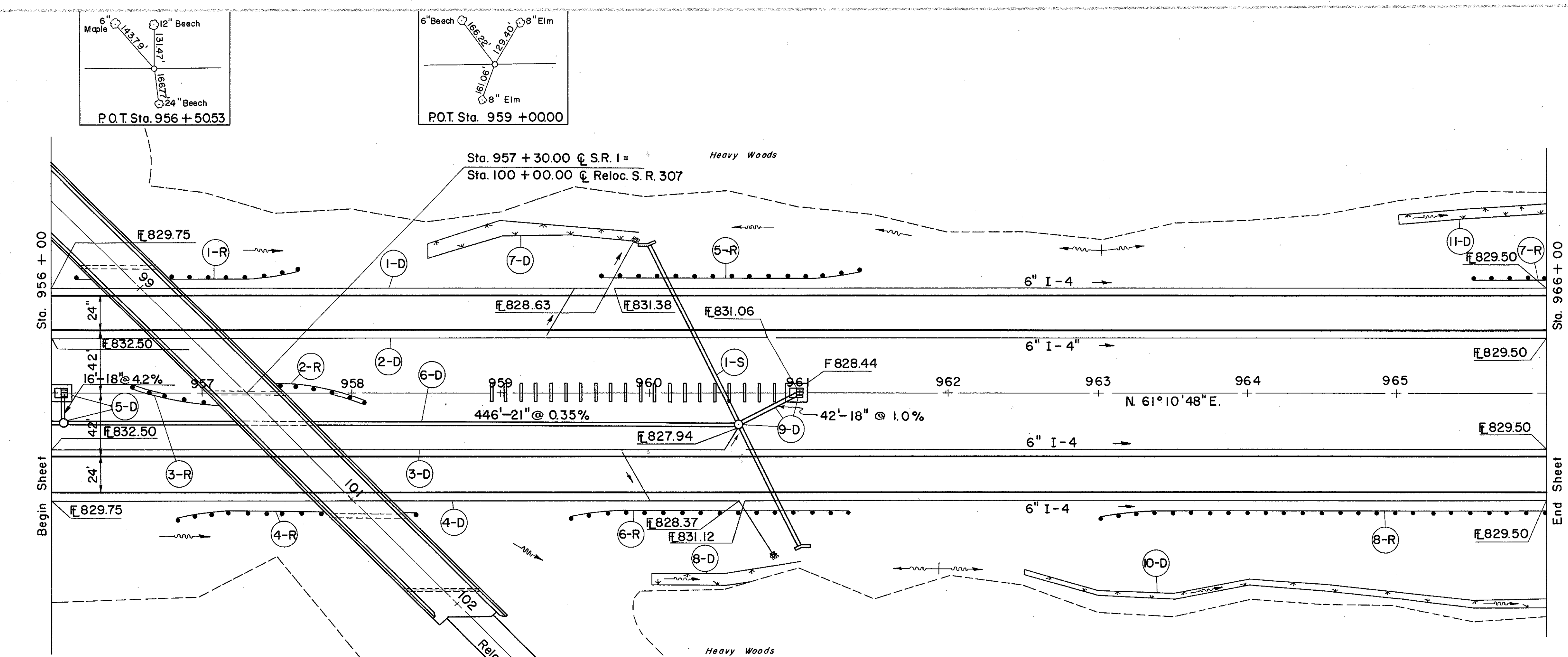


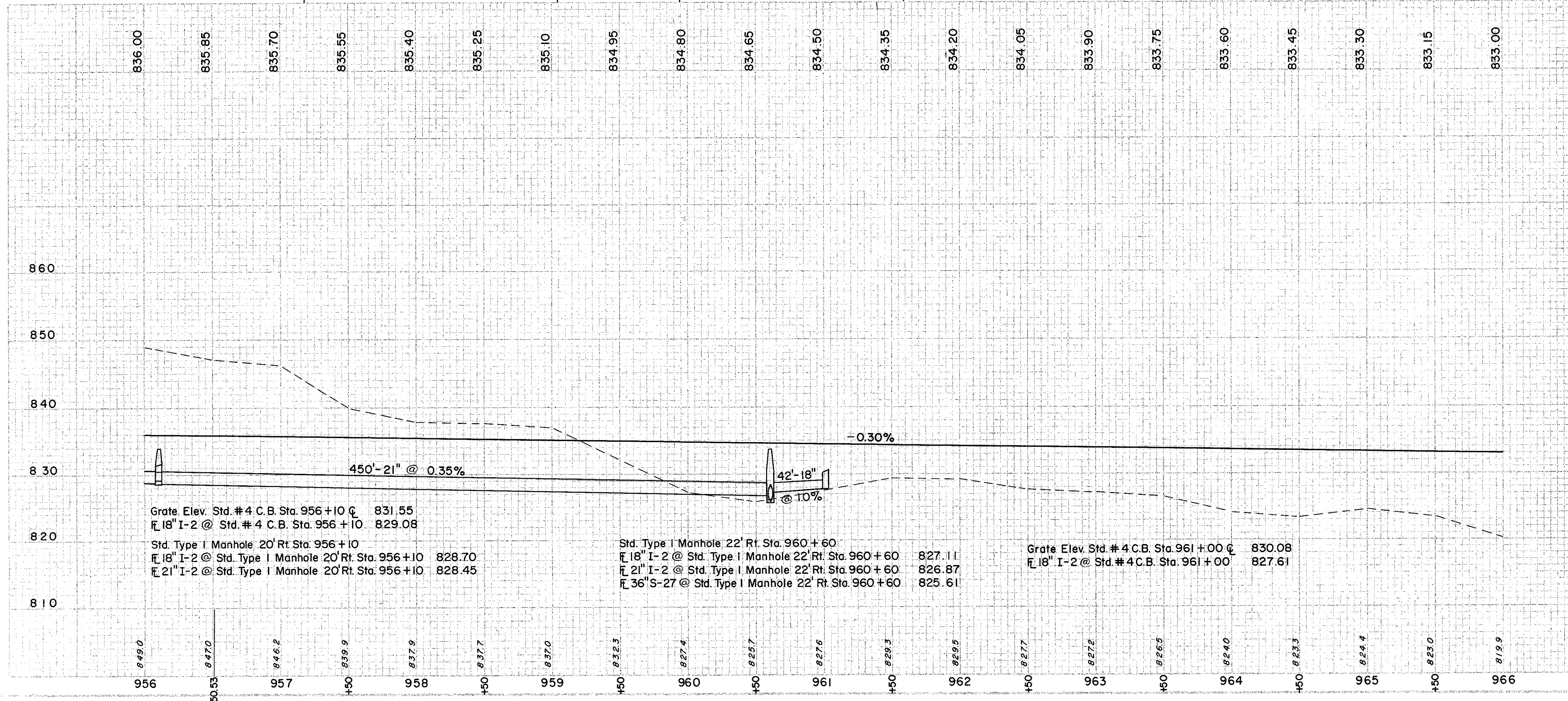
LAKE COUNTY
LAK-I-22.60



STRUCTURE LAK-I-2422
FOR DETAIL OF STRUCTURE
SEE SHEET NO. 241

B.M. # X15 Conc. Mon. S. side of S. R. 307
32.42' from C. Sta. is across Rd. opp.
drive to Case Breezy Acres
Elev. 838.28

B.M. # 101A Log Bolt in root of 8" Ash
170' Rt. of Sta. 961+50
Elev. 825.48



Grate Elev. Std. # 4 C.B. Sta. 956+10 C 831.55
F 18" I-2 @ Std. # 4 C.B. Sta. 956+10 829.08
Std. Type I Manhole 20' Rt. Sta. 956+10
F 18" I-2 @ Std. Type I Manhole 20' Rt. Sta. 956+10 828.70
F 21" I-2 @ Std. Type I Manhole 20' Rt. Sta. 956+10 828.45

Std. Type I Manhole 22' Rt. Sta. 960+60
F 18" I-2 @ Std. Type I Manhole 22' Rt. Sta. 960+60 827.11
F 21" I-2 @ Std. Type I Manhole 22' Rt. Sta. 960+60 826.87
F 36" S-27 @ Std. Type I Manhole 22' Rt. Sta. 960+60 825.61

Grate Elev. Std. # 4 C.B. Sta. 961+00 C 830.08
F 18" I-2 @ Std. # 4 C.B. Sta. 961+00 827.61

① DRAINAGE

REF. NO.	STATION	SIDE	DEPTH OF SODDING FT.	SLOPES	WIDTH OF SODDING FT.	LENGTH FT.	S. Y.	DRAINAGE				
								6" PIPE UNDERDRAIN	8" OUTLET PIPE			
1-D	956+00	LT	4	8:1	6:1	96	82	432	10			
2-D	956+00	LT	4	4:1	4:1	52	32	1026	10			
3-D	956+00	LT	4	4:1	4:1	52	32	996	10			
4-D	956+00	LT	3	4:1	4:1	64	71	496	10			
5-D	956+00	LT	3	4:1	4:1	64	71	16	446			
6-D	956+10	LT	4	4:1	4:1	52	32	42	42			
7-D	956+50	LT	4	4:1	4:1	52	32					
8-D	960+00	LT	4	4:1	4:1	52	32					
9-D	960+50	LT	4	4:1	4:1	52	32					
10-D	962+50	LT	4	4:1	4:1	52	32					
11-D	965+00	LT	4	4:1	4:1	52	32					
							SUBTOTAL	185				
							SODDING LEFT DITCH					
							4	6:1	3:1	7.6	100	92
							55	6:1	3:1	9.0	200	80
							15	4:1	4:1	3.2	150	80
							25	4:1	4:1	4.0	150	80
							45	4:1	4:1	5.6		
							SUBTOTAL				252	

② STRUCTURES

REF. NO.	STATION	SIDE	SODDING		CONC. FOR REINF. STRUCT.	CLASS. STRUCT.	C.Y.	L.B.	
			FROM	TO					
1-S	960+50	RT	960+50	966+00	73	224	7	18	
							TOTALS	1225.0	50

③ ROADWAY

REF. NO.	STATION	SIDE	SODDING		CONC. FOR REINF. STRUCT.	CLASS. STRUCT.	C.Y.	L.B.	
			FROM	TO					
1-R	956+18	LT	956+18	957+68	150	150	25	25	
2-R	957+10	LT	957+10	958+10	100	100	25	25	
3-R	956+55	LT	956+55	957+55	100	100	25	25	
4-R	956+85	LT	956+85	957+45	162.5	162.5	17.5	17.5	
5-R	959+47	LT	959+47	961+35	187.5	187.5	50	50	
6-R	965+50	LT	965+50	966+00	300	300	300	300	
7-R	963+00	LT	963+00	966+00	300	300	300	300	
							TOTALS	1225.0	50

EXCAVATION = 19,638 C.Y.
EMBANKMENT = 31,732 C.Y.
EMBANKMENT - 22% = 38,713 C.Y.