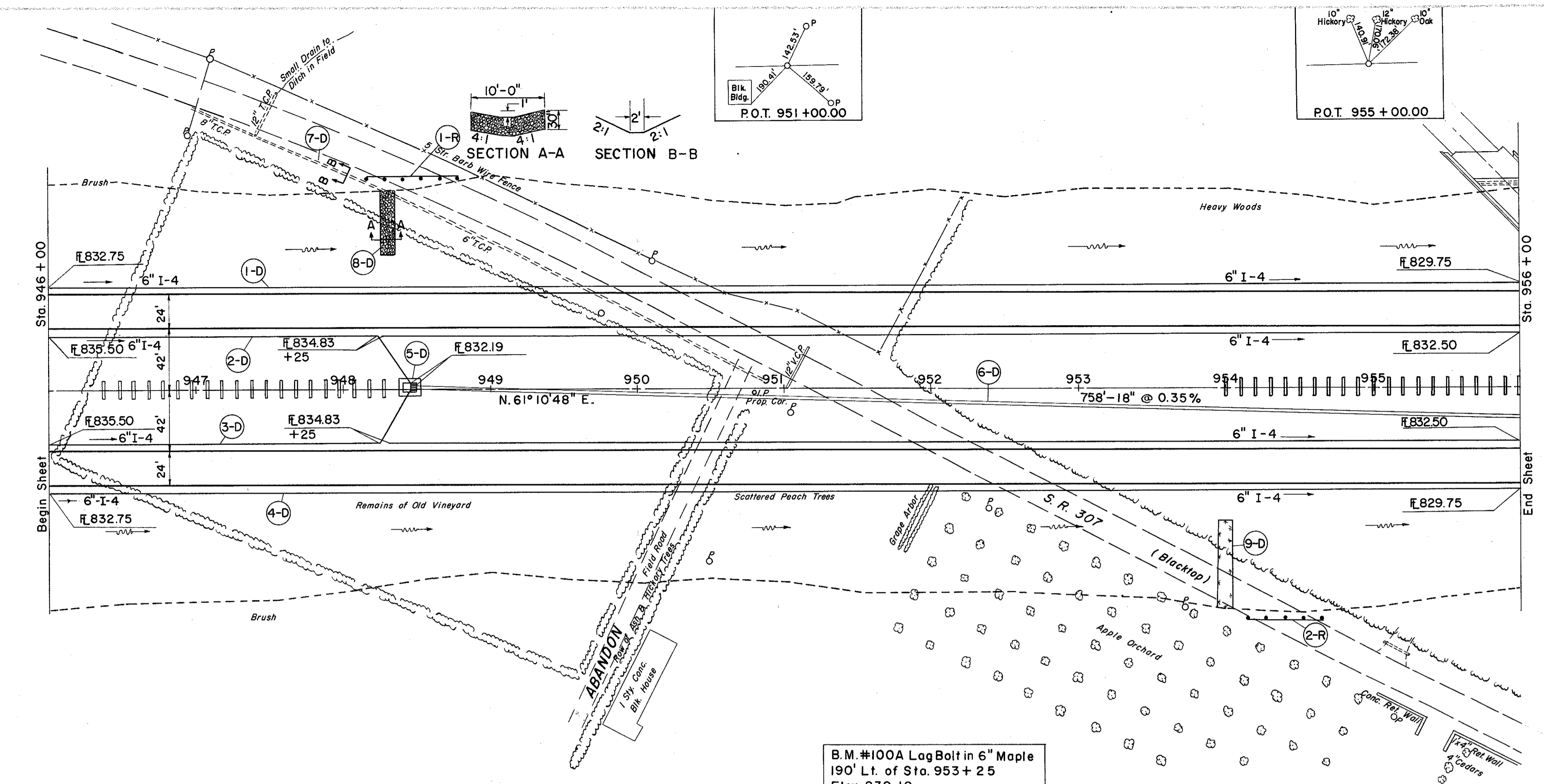
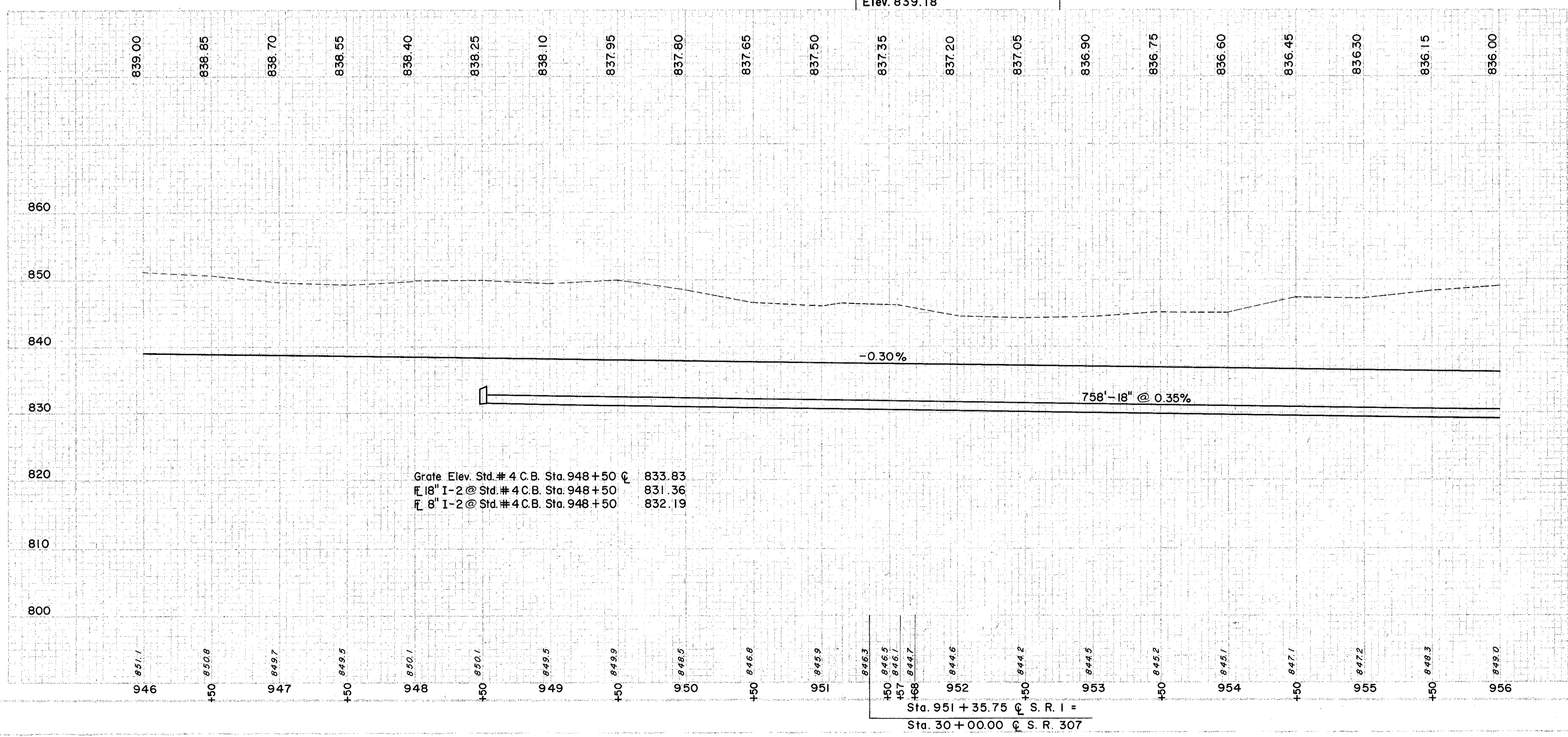


LAKE COUNTY  
LAK-1-22.60



B.M. #100A Log Bolt in 6" Maple  
190' Lt. of Sta. 953 + 25  
Elev. 839.18



Grate Elev. Std. # 4 C.B. Sta. 948 + 50 @ 833.83  
 18" I-2 @ Std. # 4 C.B. Sta. 948 + 50 @ 831.36  
 8" I-2 @ Std. # 4 C.B. Sta. 948 + 50 @ 832.19

Sta. 951 + 35.75 @ S. R. 1 =  
 Sta. 30 + 00.00 @ S. R. 307

ROADWAY

REF. NO.	STATION	SIDE	TOTAL	
			FROM	TO
1-R	948 + 17	948 + 79.5	LT.	62.5
2-R	954 + 15	955 + 00.	RT.	50
			<b>TOTAL</b>	<b>112.5</b>

DRAINAGE

REF. NO.	STATION	SIDE	L.F.		S.Y.	E.A.	I-2	I-4	I-5	I-8	I-10	E-12
			FROM	TO								
1-D	946 + 00	956 + 00	71	LT.								
2-D	946 + 00	956 + 00	37	LT.								
3-D	946 + 00	956 + 00	71	RT.								
4-D	946 + 00	956 + 00	45	CL								
5-D	948 + 50	950 + 45		CL								
6-D	948 + 50	956 + 00	30	LT.								140
7-D	947 + 45	948 + 30		LT.								
8-D	948 + 30			RT.								
9-D	954 + 00			RT.								
			<b>TOTAL</b>									<b>40.7</b>
												<b>66.7</b>

Excavation	=	100,931 C.Y.
Embankment	=	641 C.Y.
Embankment - 22%	=	782 C.Y.