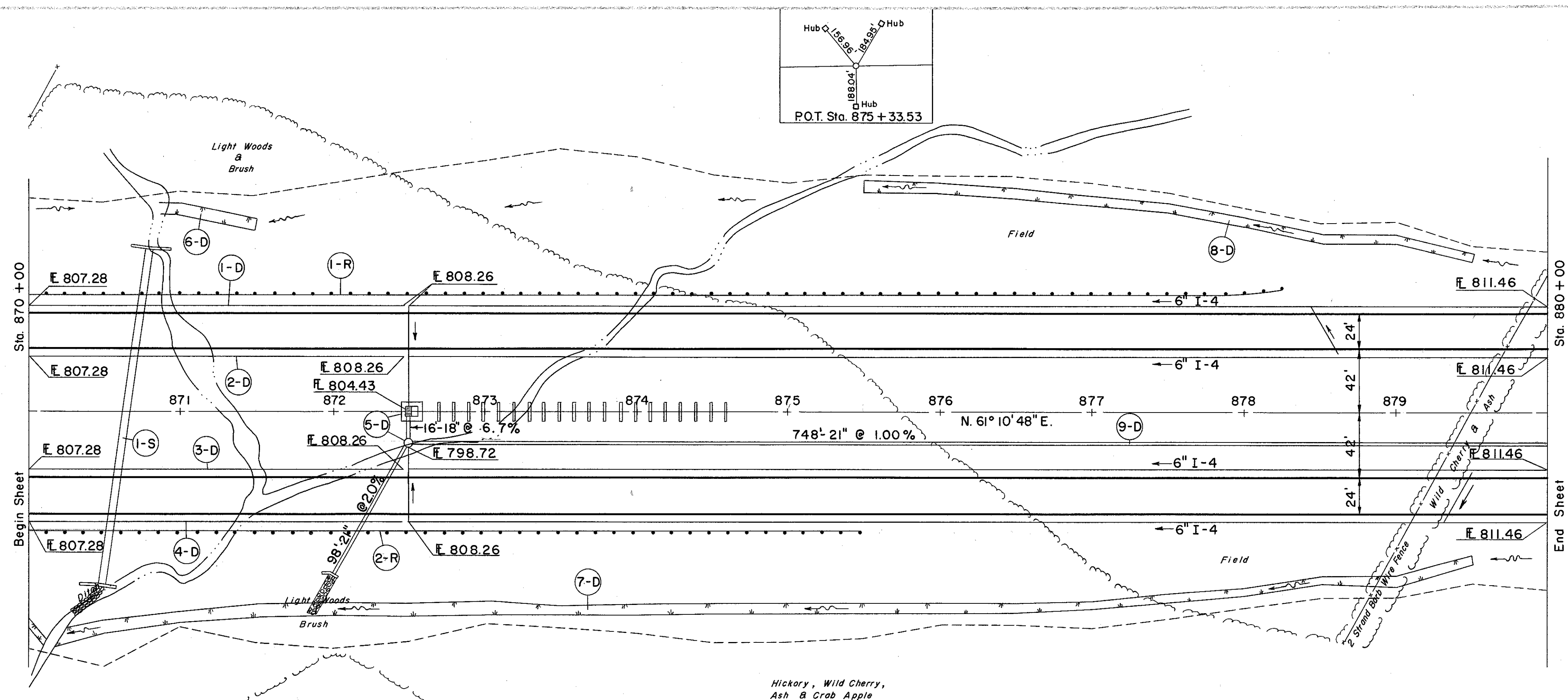
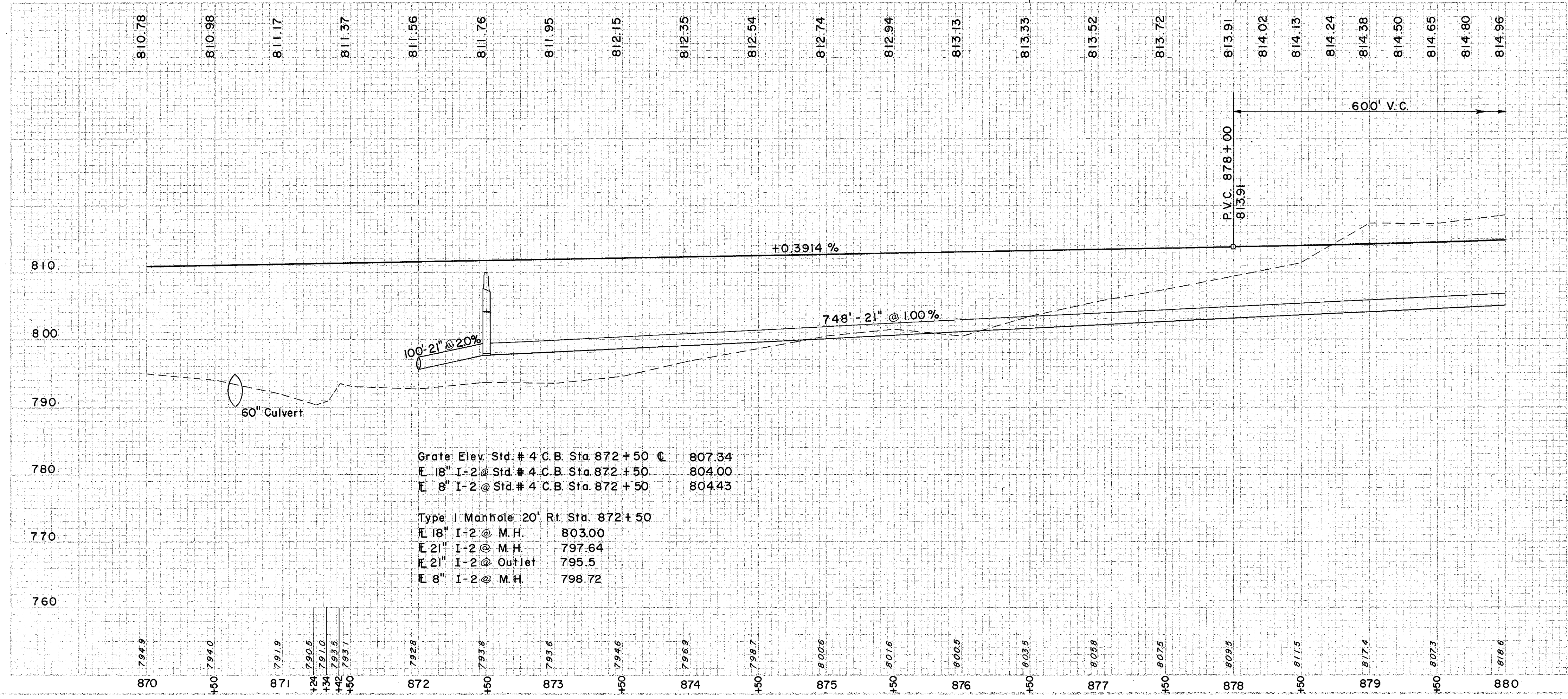


LAKE COUNTY LAK-I-22.60



STRUCTURE LAK-I-2320 FOR DETAIL OF STRUCTURE SEE SHEET NO. 239

B.M. # 94A Lag Bolt in 12" Birch 205' Lt of Sta. 877 + 50 Elev. 800.04



① DRAINAGE

REF NO.	STATION	FROM	TO	I-5		I-4		I-2		I-1		S.Y.
				6" 90° BEND	6" WYE	6" INCREASE	8"x8" Tee	CL 14" STORM SEWER UNDER	CL 14" STORM SEWER UNDER	CL 14" STORM SEWER UNDER	CL 14" STORM SEWER UNDER	
I-S	870+65											
I-4												
I-2												
I-1												
				SUBTOTAL		SUBTOTAL		SUBTOTAL		SUBTOTAL		
				693		693		693		693		

② STRUCTURES

REF NO.	STATION	FROM	TO	E-3		E-2		I-10		I-10		S-4		S-27	
				EXC. FOR STRUCT.	CHANNEL EXC.	CONC. FOR STRUCT.	DUMPED ROCK CHANNEL PROTECT.	REINF. STEEL	CONC. FOR STRUCT.	REINF. STEEL	60" PIPE FOR CONCRETE	FOR CONCRETE	FOR CONCRETE	FOR CONCRETE	FOR CONCRETE
I-R	870+00														
I-S	870+00														
				SUBTOTAL		SUBTOTAL		SUBTOTAL		SUBTOTAL		SUBTOTAL		SUBTOTAL	
				131		116		18		10		202		266	

③ ROADWAY

REF NO.	STATION	FROM	TO	I-5		I-4		I-2		I-1		S-4		S-27	
				EXC. FOR STRUCT.	CHANNEL EXC.	CONC. FOR STRUCT.	DUMPED ROCK CHANNEL PROTECT.	REINF. STEEL	CONC. FOR STRUCT.	REINF. STEEL	60" PIPE FOR CONCRETE	FOR CONCRETE	FOR CONCRETE	FOR CONCRETE	FOR CONCRETE
I-R	870+00														
I-S	870+00														
				SUBTOTAL		SUBTOTAL		SUBTOTAL		SUBTOTAL		SUBTOTAL		SUBTOTAL	
				550		825		550		550		2072		266	

STATION	SODDING RIGHT DITCH		SODDING LEFT DITCH		S.Y.
	DEPTH SODDING FT.	WIDTH SODDING FT.	DEPTH SODDING FT.	WIDTH SODDING FT.	
870+00	4	4	4	4	10
870+25	8	4	4	4	65
871+00	65	4	4	4	46
871+50	9	4	4	4	200
873+50	45	4	4	4	178
876+50	30	4	4	4	207
877+00	25	4	4	4	29
878+00	2	4	4	4	53
879+00	2	4	4	4	42
879+50	3	4	4	4	50
SUBTOTAL					693
871+00	50	4	4	4	47
875+50	55	4	4	4	44
877+00	35	4	4	4	80
877+50	20	4	4	4	36
878+50	15	4	4	4	69
879+00	15	4	4	4	34
879+50	25	4	4	4	37
SUBTOTAL					347

EXCAVATION	=	6,368	C.Y.
EMBANKMENT	=	76,140	C.Y.
EMBANKMENT @ 22%	=	92,891	C.Y.