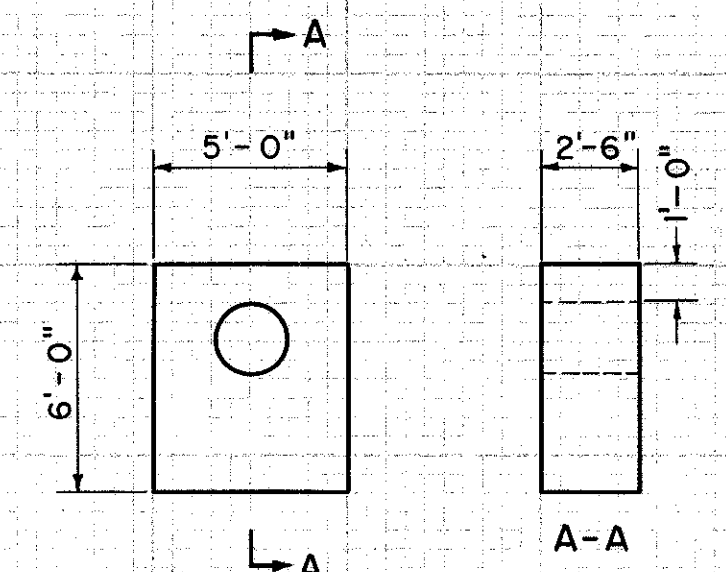
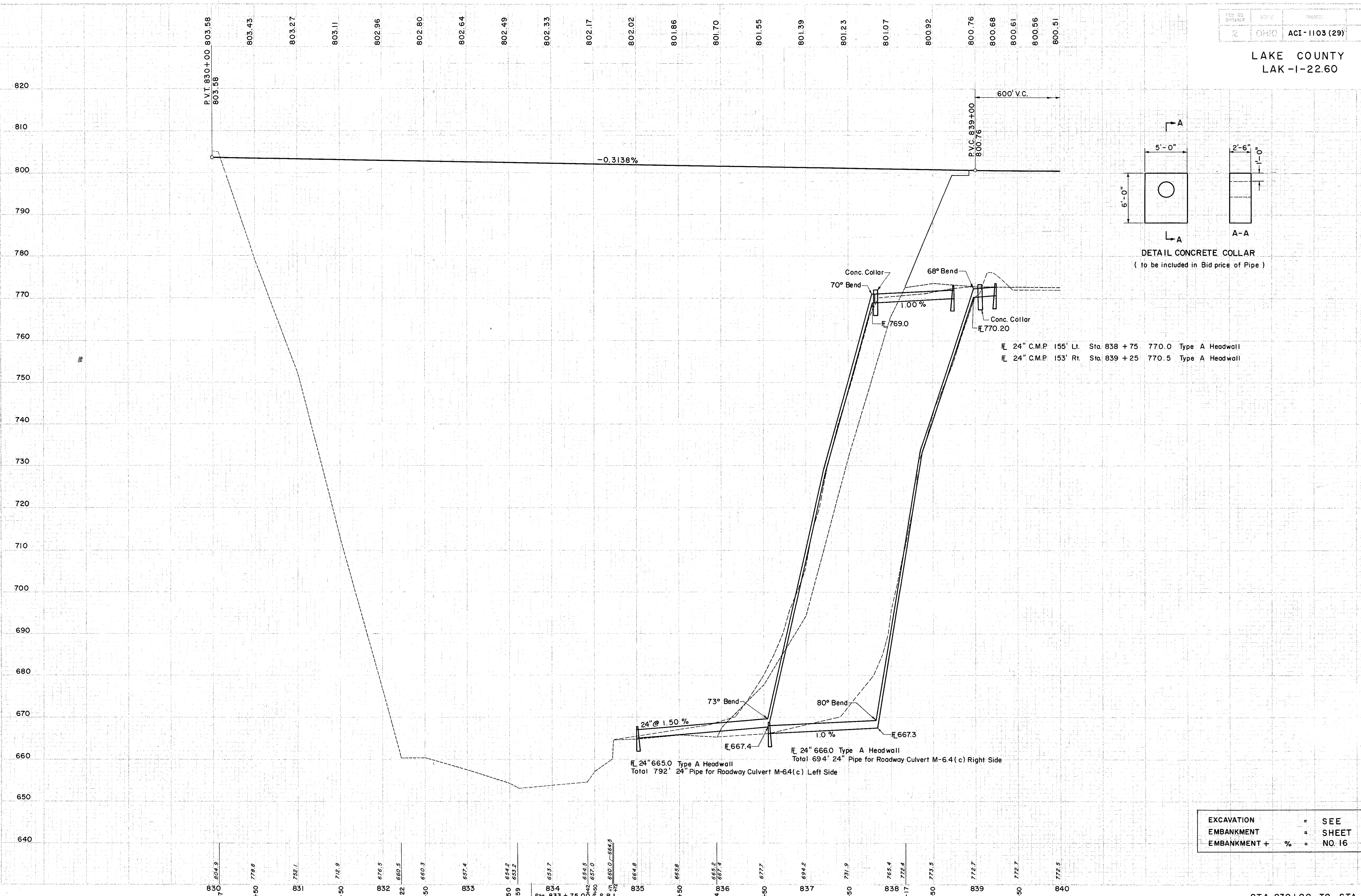


LAKE COUNTY
LAK-I-22.60



DETAIL CONCRETE COLLAR
(to be included in Bid price of Pipe)

℄ 24" C.M.P. 155' Lt. Sta. 838 + 75 770.0 Type A Headwall
℄ 24" C.M.P. 153' Rt. Sta. 839 + 25 770.5 Type A Headwall

℄ 24" 665.0 Type A Headwall
Total 792' 24" Pipe for Roadway Culvert M-64(c) Left Side

℄ 24" 666.0 Type A Headwall
Total 694' 24" Pipe for Roadway Culvert M-64(c) Right Side

EXCAVATION	=	SEE
EMBANKMENT	=	SHEET
EMBANKMENT + %	=	NO. 16