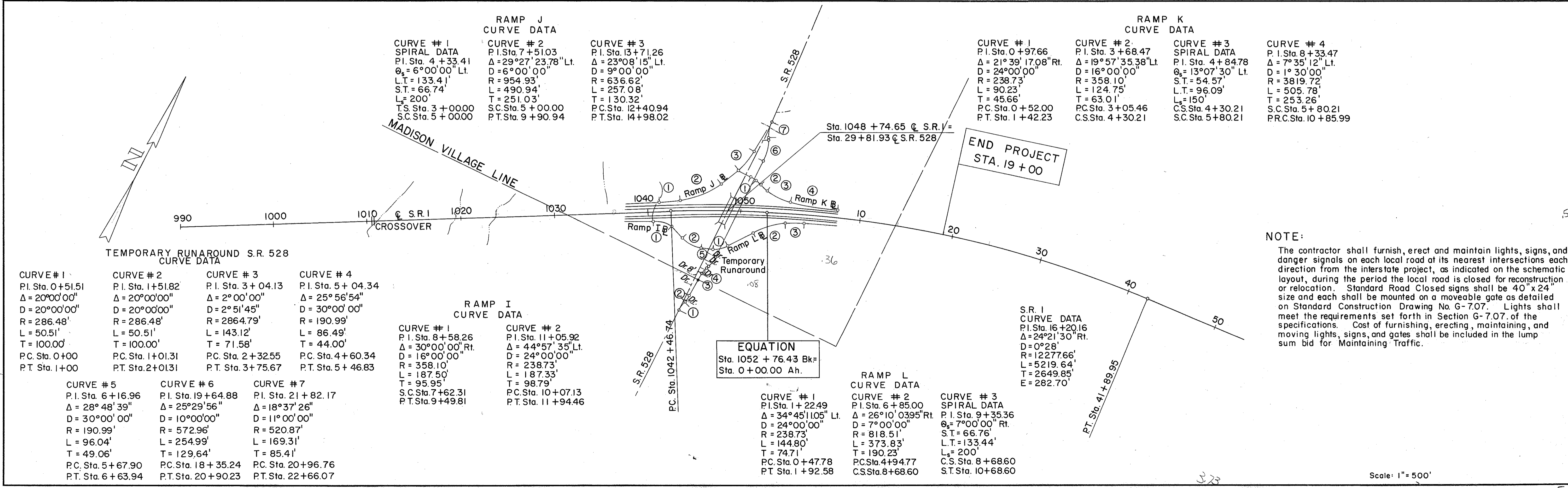
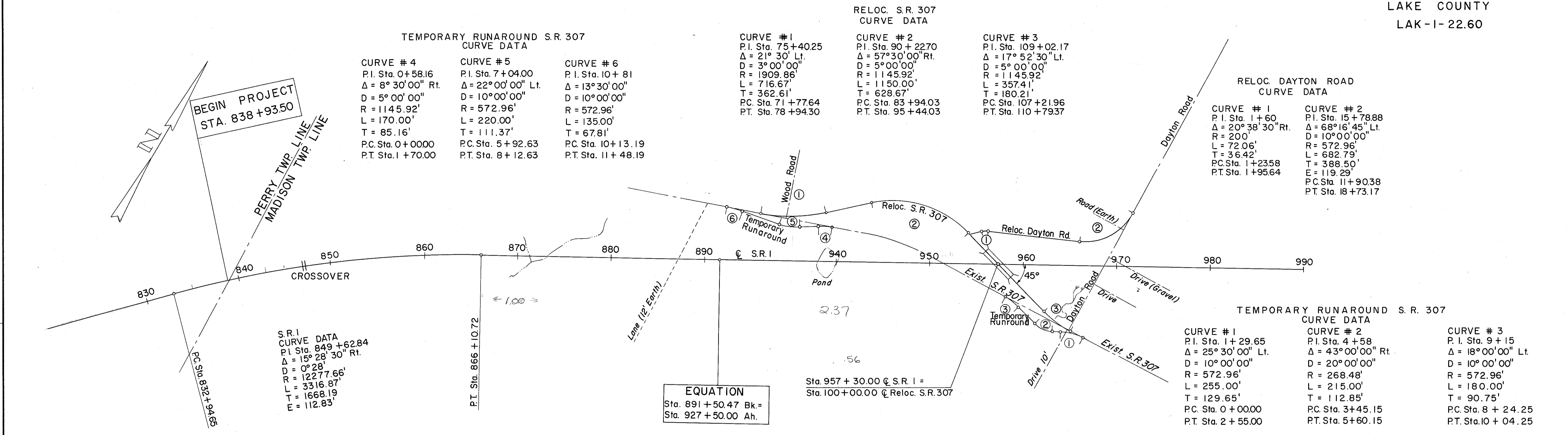


# SCHEMATIC LAYOUT PLAN

FED. RD. DIVISION	STATE	PROJECT	1" = 280'
2	OHIO	ACI-1103 (29)	

LAKE COUNTY  
LAK-1-22.60



**NOTE:**  
The contractor shall furnish, erect and maintain lights, signs, and danger signals on each local road at its nearest intersections each direction from the interstate project, as indicated on the schematic layout, during the period the local road is closed for reconstruction or relocation. Standard Road Closed signs shall be 40" x 24" size and each shall be mounted on a moveable gate as detailed on Standard Construction Drawing No. G-7.07. Lights shall meet the requirements set forth in Section G-7.07 of the specifications. Cost of furnishing, erecting, maintaining, and moving lights, signs, and gates shall be included in the lump sum bid for Maintaining Traffic.