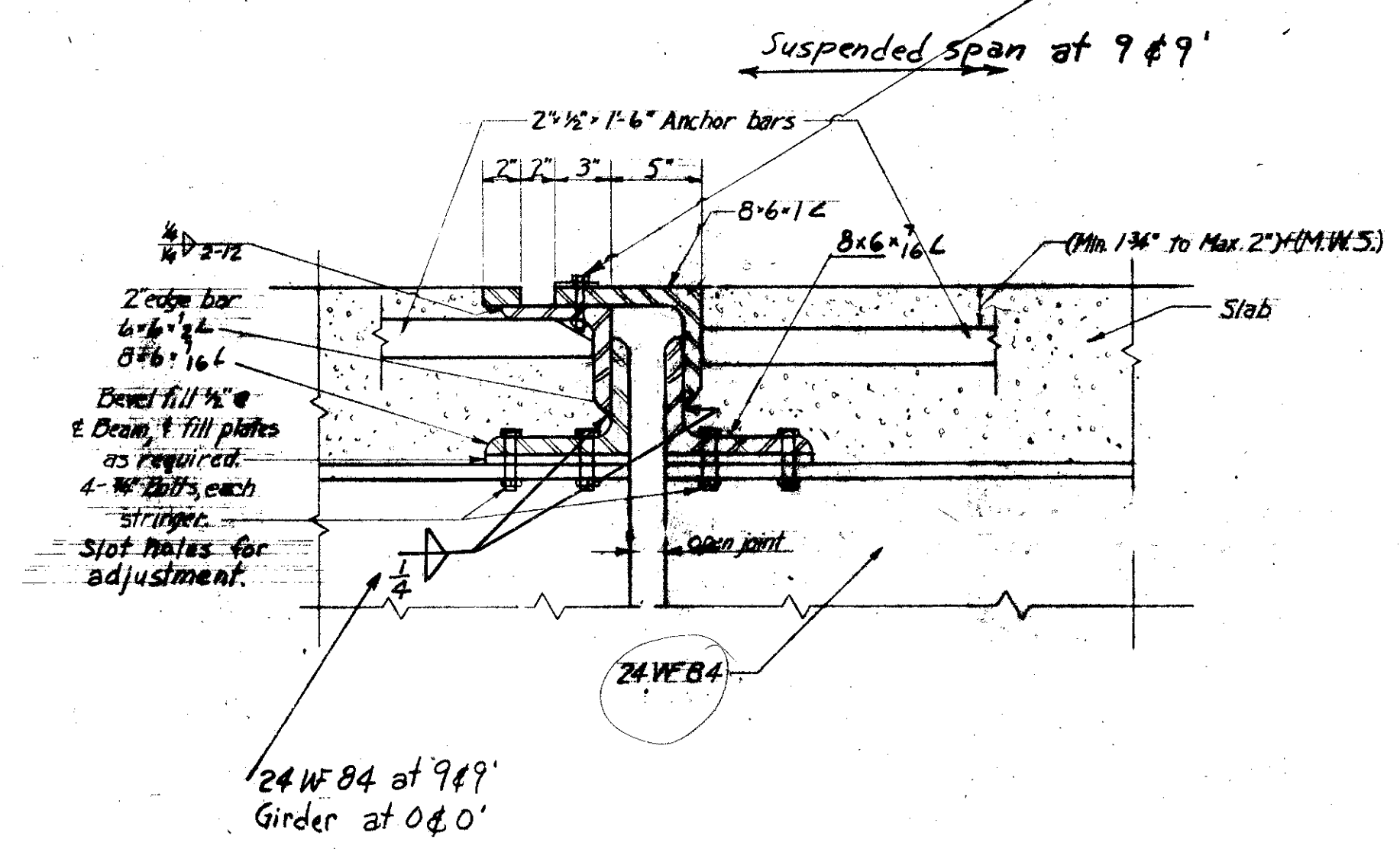


FED. RD. DIVISION	STATE	PROJECT
2	OHIO	ACI-1103 (30)

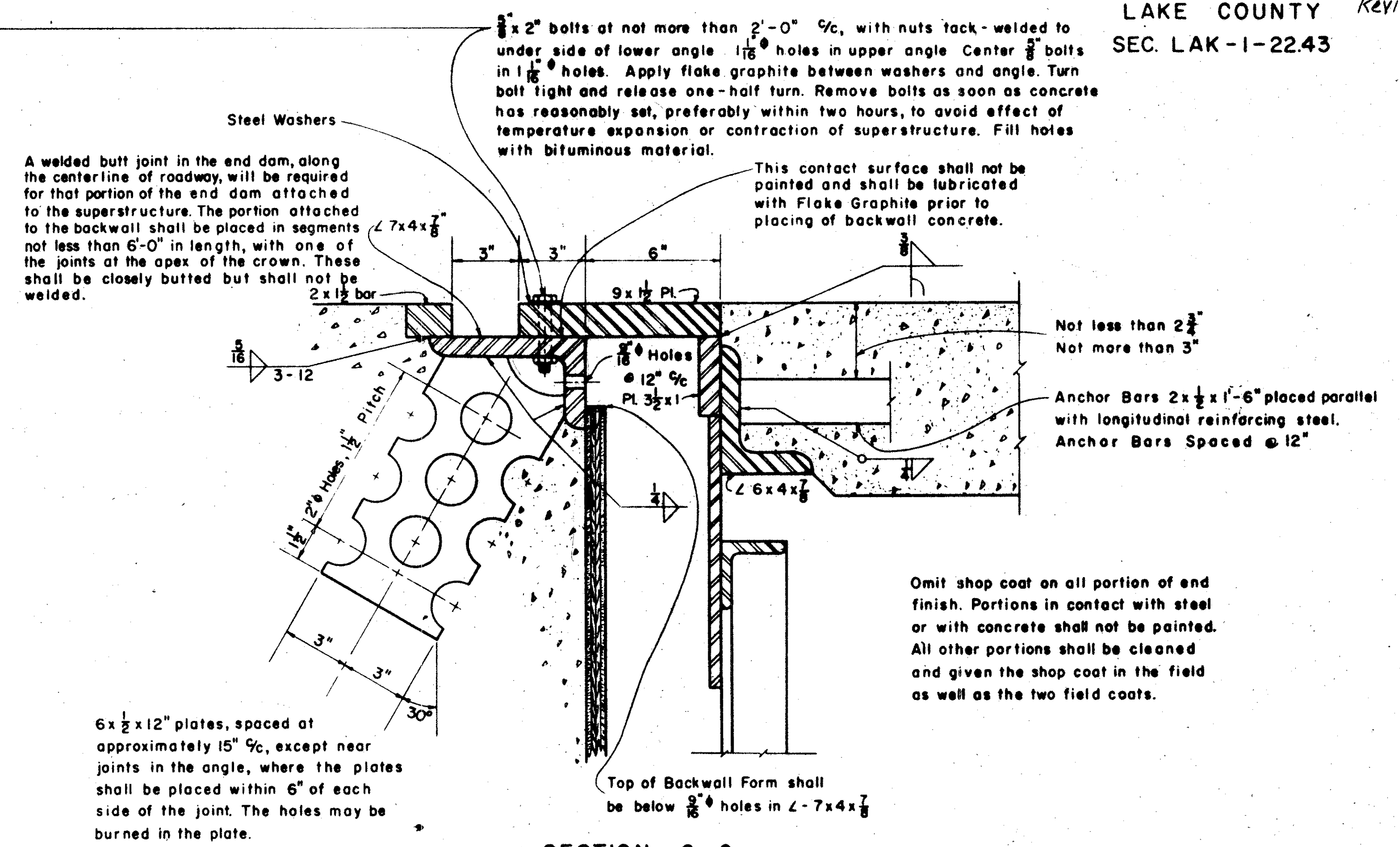
516R  
55

LAKE COUNTY  
SEC. LAK-1-22.43  
Revised



SECTION C-C  
THRU END DAM AT PANELS 9,9', 0 & 0'

For curb fl. & misc. details of end dam see  
C.S.D.-2-56 sheets 213, revised 3-1-58



SECTION C-C  
THRU END DAM AT ABUTMENTS

For Details of End Dam not shown and for Details of End Cross Frame See Standard Drawing No. C.S.D.-2-56, Sheet 2, Revised 3-1-58.

This sheet is to be used for construction and supersedes Sheet No. 512 of the Bidding Plans. 9-16-58

SEC. C-34-B FED. AID PROJ. NO. ACI-1103 (30)

PREPARED BY  
CAPITOL ENGINEERING ASSOCIATES, DILLSBURG, PA.  
FOR

STATE OF OHIO  
DEPARTMENT OF HIGHWAYS  
DIVISION OF DESIGN AND CONSTRUCTION  
BUREAU OF BRIDGES

DETAIL OF END DAMS

BRIDGE NO. LAK-1-22.52  
OVER GRAND RIVER  
LAKE COUNTY STA 833+75

DESIGNED	DRAWN	TRACED	CHECKED	REVISED	DATE	REVISED
						9-16-58